

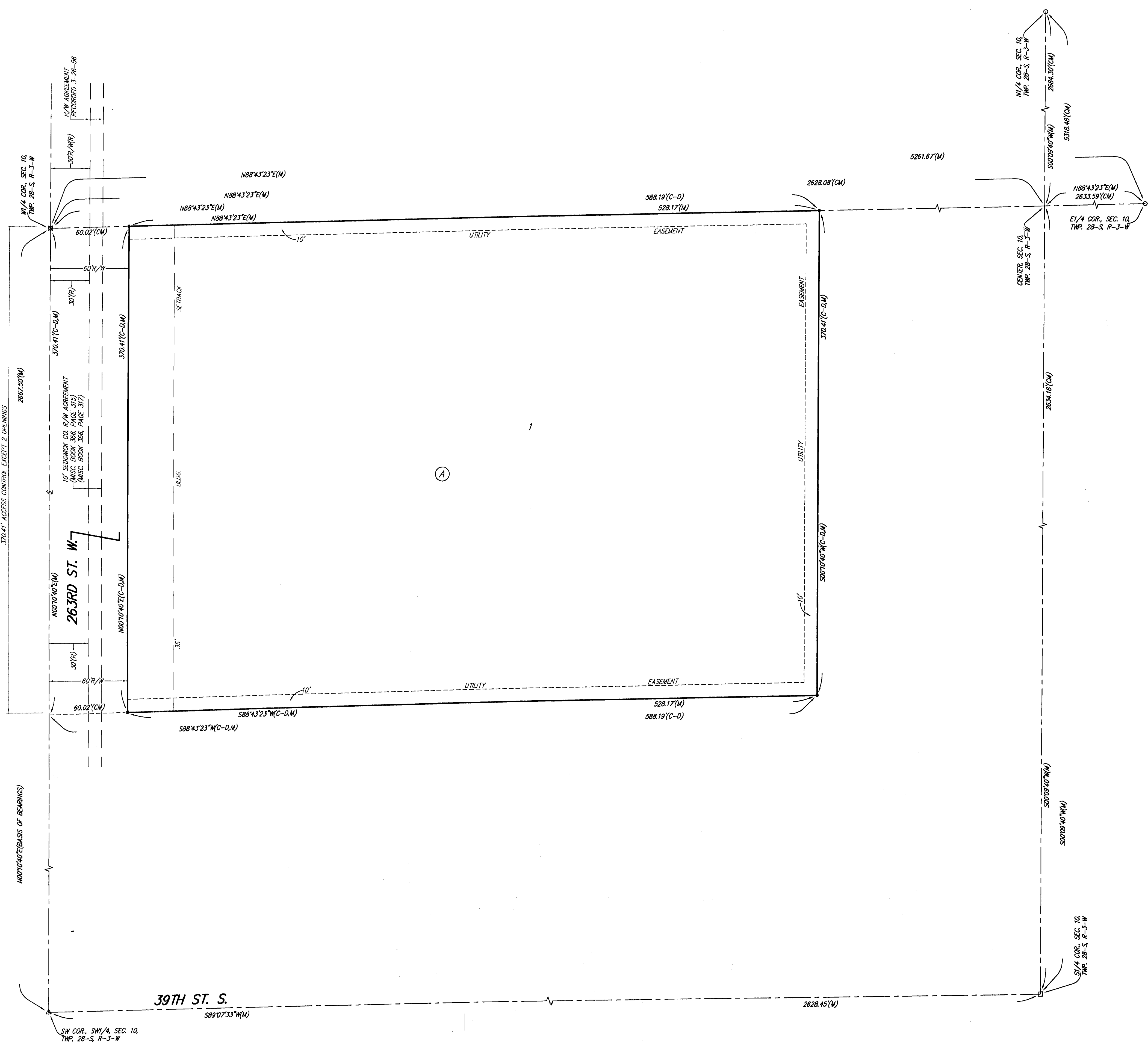
# SEDGWICK COUNTY FIRE STATION NO. 39 ADDITION

## SEDGWICK COUNTY, KANSAS

FINAL TRACING REC'D

REVISED

7/24/09



State of Kansas) SS We, Baughman Company, P.A., Surveyors in Sedgwick County) do hereby certify that we have surveyed and plotted "SEDGWICK COUNTY FIRE STATION NO. 39 ADDITION", Sedgwick County, Kansas and that the accompanying plat is a true and correct exhibit of the property surveyed, described as the west 588.00 feet of the north 370.29 feet of the SW 1/4 of Sec. 10, Twp. 28-S, R-3-W of the 6th P.M., Sedgwick County, Kansas, subject to road rights-of-way of record.

Existing public easements and dedications being vacated by virtue of K.S.A. 12-512(b).

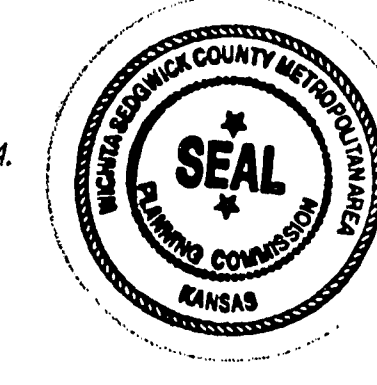
Baughman Company, P.A.

*Michael G. Conrey*  
Michael G. Conrey, Surveyor

This plat of "SEDGWICK COUNTY FIRE STATION NO. 39 ADDITION", Sedgwick County, Kansas has been submitted to and approved by the Wichita-Sedgwick County Metropolitan Area Planning Commission, Wichita, Kansas.

Dated this 17th day of June, 2009.

Wichita-Sedgwick County Metropolitan Area Planning Commission



*Darrell Downing*  
Darrell Downing, Chair

*John L. Schlegel*  
John L. Schlegel, Secretary

This plat approved and all dedications shown hereon accepted by the Board of Commissioners of Sedgwick County, Kansas, this \_\_\_\_\_ day of \_\_\_\_\_, 2009.

\_\_\_\_\_  
Kelly Parks, Chairman

ATTEST: \_\_\_\_\_, County Clerk

Kelly B. Arnold

Know all men by these presents that we, the undersigned, have caused the land in the surveyors certificate to be platted into a Lot, a Block, and a Street, to be known as "SEDGWICK COUNTY FIRE STATION NO. 39 ADDITION", Sedgwick County, Kansas. The utility easements are hereby granted as indicated for the construction and maintenance of all public utilities. Access controls shall be as depicted on the face of the plat and are hereby granted to the appropriate governing body. The permitted opening locations shall be as determined by the Engineer for the appropriate governing body.

Sedgwick County Fire District #1

*Kelly Parks*  
Kelly Parks, Chairman

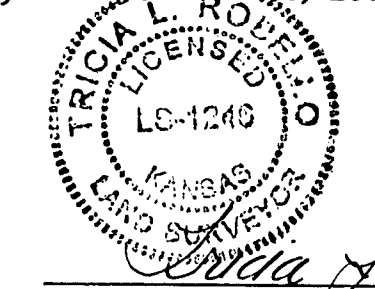


State of Kansas) SS The foregoing instrument acknowledged before me, this 17 day of June, 2009, by Kelly Parks, Chairman of Sedgwick County Fire District #1, on behalf of Sedgwick County Fire District #1.

*Katie Asbury*  
Katie Asbury, Notary Public

My App. Exp. 4/13/13

Reviewed in accordance with K.S.A. 58-2005 on this 23rd day of July, 2009.



*Tricia L. Robella*  
Tricia L. Robella, L.S. #1246  
Deputy County Surveyor  
Sedgwick County, Kansas

Entered on transfer record this \_\_\_\_\_ day of \_\_\_\_\_, 2009.

\_\_\_\_\_  
Kelly B. Arnold, County Clerk

State of Kansas) SS This is to certify that this plat has been filed for record in the office of the Register of Deeds, this \_\_\_\_\_ day of \_\_\_\_\_, 2009 at \_\_\_\_\_ o'clock \_\_\_\_\_ M; and is duly recorded.

\_\_\_\_\_  
Bill Meek, Register of Deeds

\_\_\_\_\_  
Tonya Buckingham, Deputy

**NOTE:**  
A drainage plan has been developed for this subdivision and is on file with the appropriate governing body. Drainage intent shall remain as depicted or as modified with the approval of the Engineer for the appropriate governing body. No obstructions which impede the flow of this drainage plan shall be allowed.

**Baughman Company, P.A.**  
315 Ellis St. Wichita, KS 67211 P 316262-7271 F 316262-0149  
ENGINEERING | SURVEYING | PLANNING | LANDSCAPE ARCHITECTURE

SEDGWICK COUNTY FIRE STATION NO. 39 (BAUGHMAN COMPANY, P.A.)