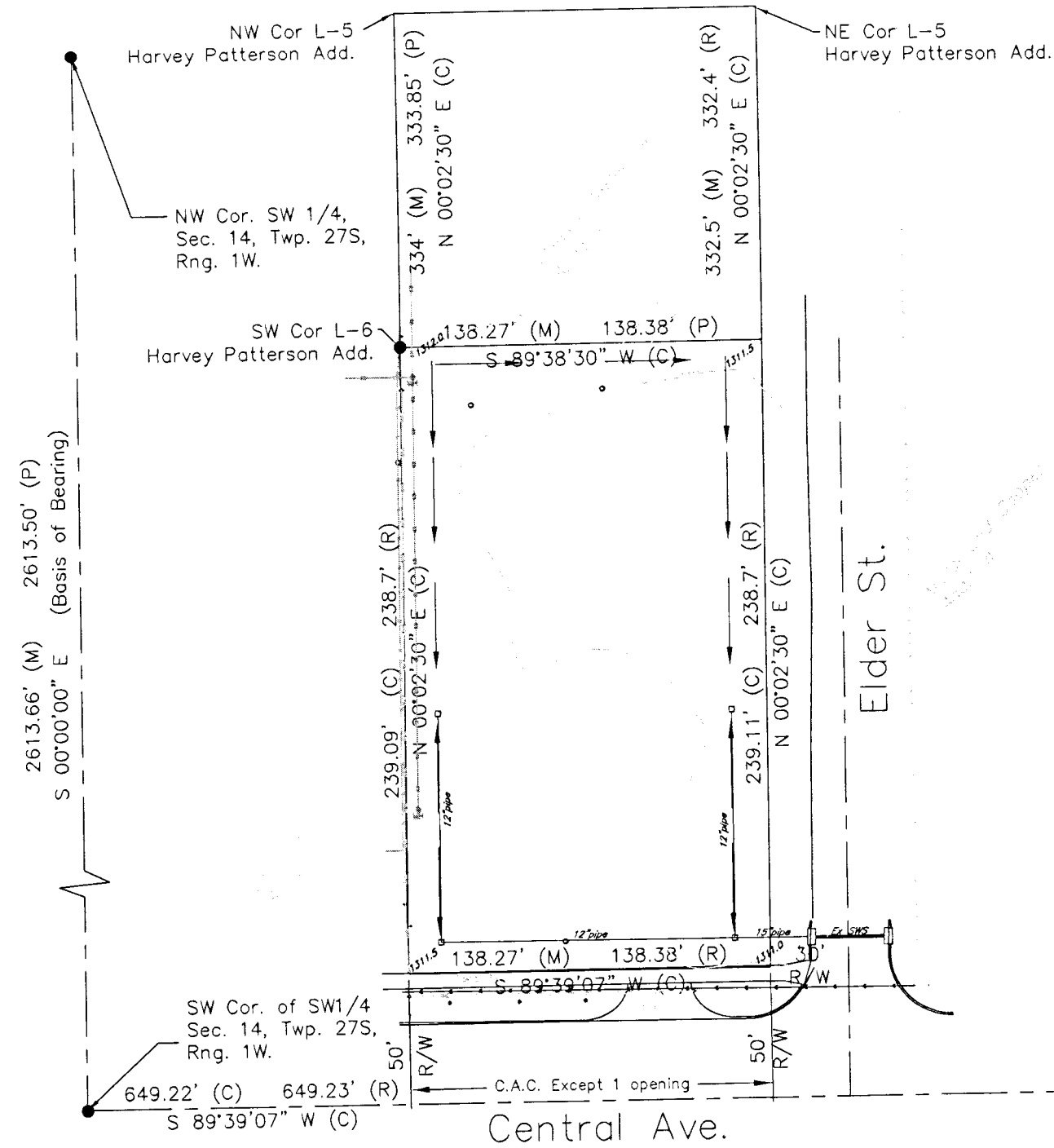


DRAINAGE PLAN
SHAW ADDITION
 WICHITA, SEDGWICK COUNTY, KANSAS
 Part of the SW 1/4, Section 14, Township 27 South, Range 1 West of the 6th P.M.



Existing Site Drainage

Block #	Acres	Tc	C5	IS	Q100	1100	Q5	Q100
Proposed Plot	0.76	15 min	0.38	4.56	0.52	7.37	1.25cfs	2.91cfs

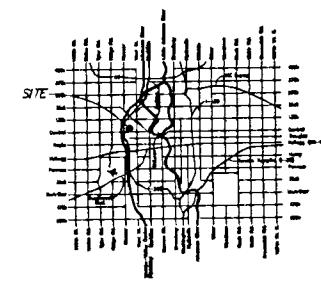
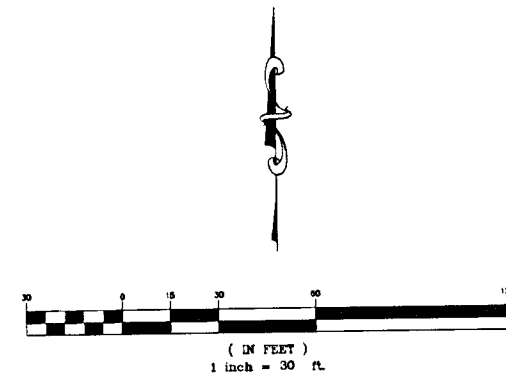
Proposed Site Drainage

Block #	Acres	Tc	C5	IS	Q100	1100	Q5	Q100
Proposed Plot	0.76	15 min	0.69	4.56	0.80	7.37	2.39cfs	4.48cfs

Engineer's Note:
 Site drainage calculations developed using the Rational Method for peak runoff. "C" & "I" values established from the City of Wichita Design Criteria and Documentation.

- LEGEND**
- ⊕ Fire Hydrant
 - | Light Pole
 - ✕ Pine Tree
 - ⊕ Power Pole
 - ⊕ Telephone Pedestal
 - Tree
 - ⊕ Water Meter
 - ⊕ Water Valve
 - RW Marker (found)
 - 1/2" Iron Pin (found)
 - ⊕ 5/8" Rebar (set) RLS #1294

Benchmark:
 City of Wichita disc on the Southwest corner of 25th Street and Arkansas, approx. 30' south and 40' west.
 Elev. = 127.63



LOCATION MAP

Filename: 07124 Alan Millona Plot.dwg Alan Millona prowin plot.dwg

kemiller
 engineering

316 S. Market, Wichita, KS 67202 316/264-0242