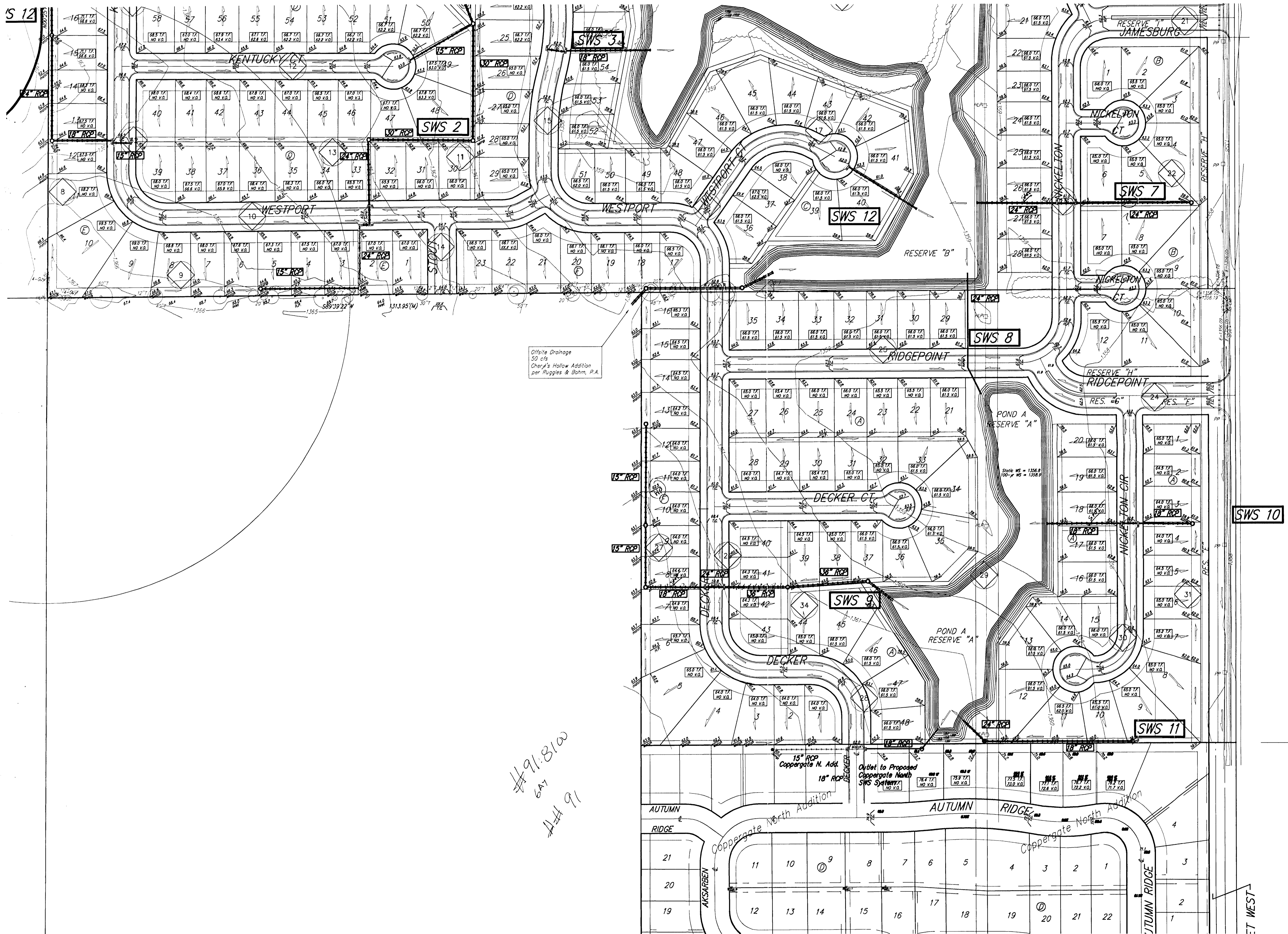
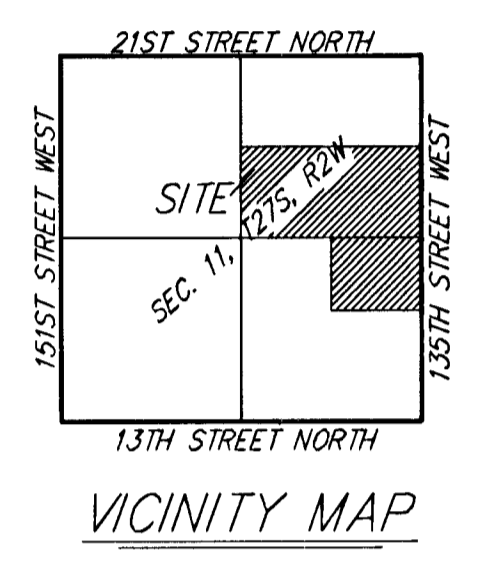
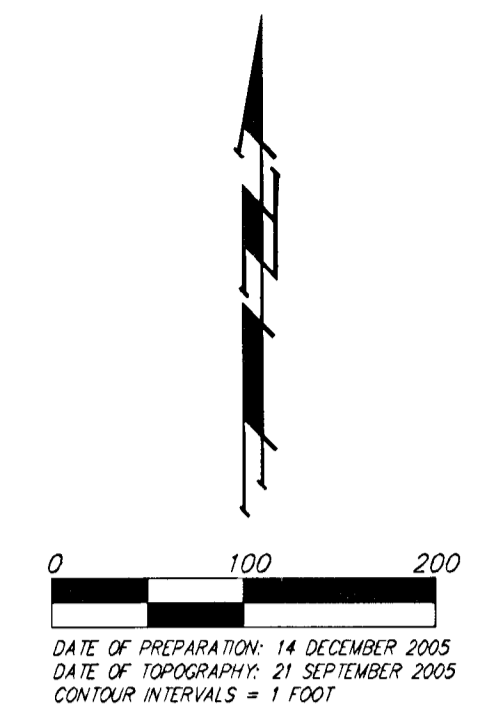


# GRADING PLAN SILVERTON ADDITION WICHITA, SEDGWICK COUNTY, KANSAS



#91.810w  
641  
4-4-91



NOTE: Floodway, Floodplain, and Base Flood Elevations are scaled per location per Preliminary FEMA FIRM Map Panel 310 of 700 for Sedgwick County, Kansas.