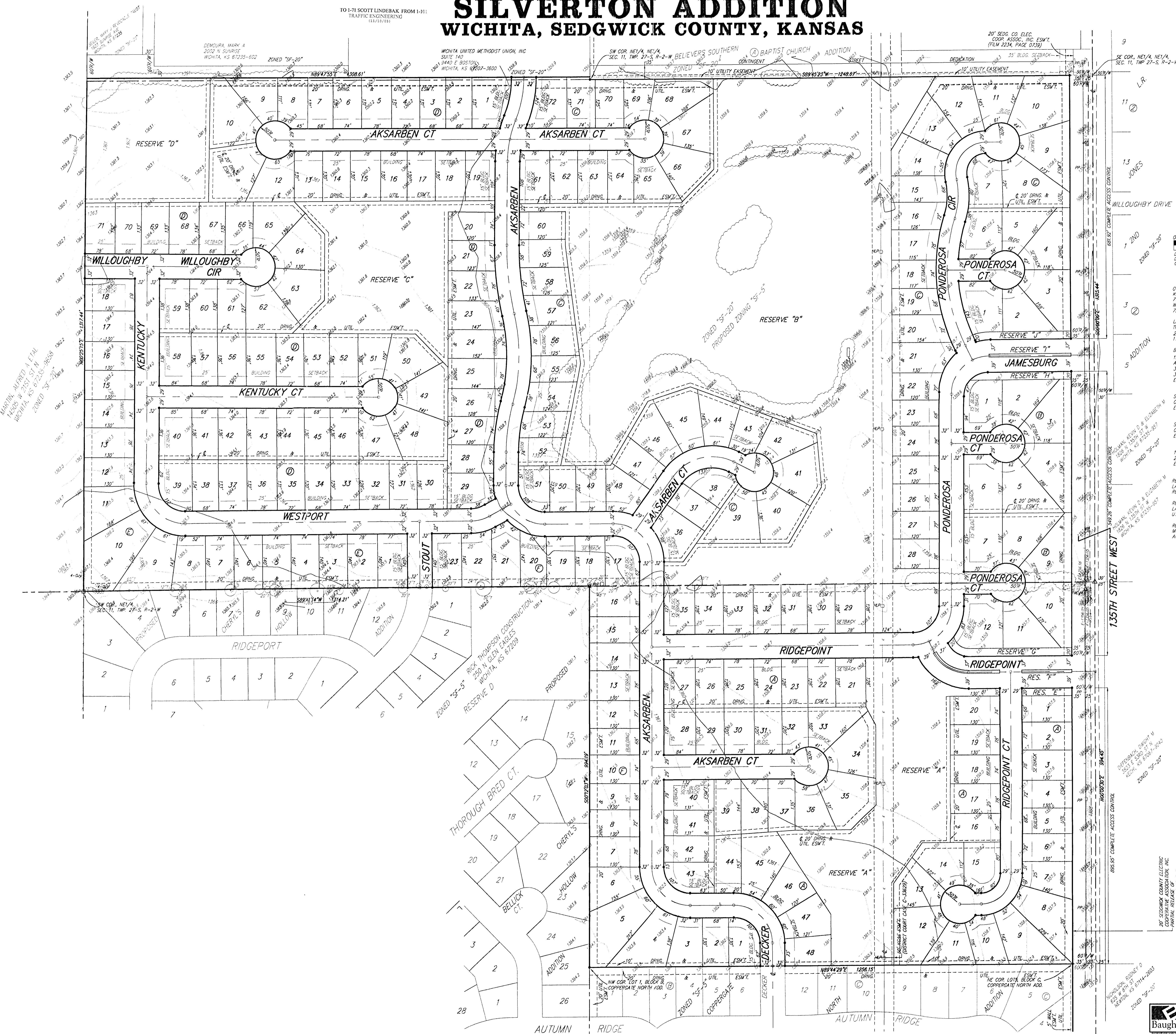


PRELIMINARY PLAT
SILVERTON ADDITION
 WICHITA, SEDGWICK COUNTY, KANSAS

TO I-71 SCOTT LINDBAK FROM I-10:
 TRAFFIC ENGINEERING
 (313/25751)



OWNER/CONTRACT PURCHASER:
 KESSEY INVESTMENTS, INC.
 718 N 119TH ST W
 WICHITA, KS 67235
 722-1027

LEGAL DESCRIPTION:
 THE NORTH 30 ACRES OF THE E1/2, SE1/4, OF SECTION 11, TWP. 27-S, R-2-W, TOGETHER WITH THE S1/2 OF THE NE1/4, SECTION 11, 27-S, R-2-W, MORE OR LESS.

BENCHMARK:
 135TH ST. W. & 13TH ST. N. - CITY OF WICHITA DISC
 AT SOUTHWEST CORNER OF INTERSECTION,
 30.002' S. OF & OF 13TH ST. W.
 35.002' W. OF & OF 135TH ST. W.
 ELEV. = 168.25 CITY DATUM
 (1355.65 NGVD29)

SMALL RAILROAD SPIKE IN 2ND HLP W. OF 135TH ST. W.
 ON SOUTH SIDE OF 13TH ST. N. (N. FACE OF HLP).
 ELEV. = 1359.50 NGVD29

SMALL RAILROAD SPIKE IN 4TH HLP W. OF 135TH ST. W.
 ON SOUTH SIDE OF 13TH ST. N. (N. FACE OF HLP).
 ELEV. = 1366.84 NGVD29

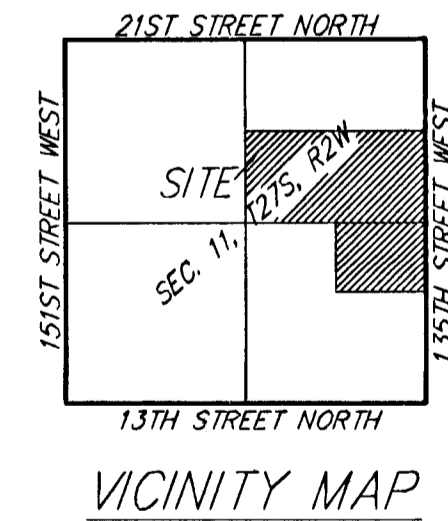
135TH ST. W. & 13TH ST. N. - CITY OF WICHITA DISC
 28.00' E. OF & OF 135TH ST. W.
 ELEV. = 1357.73 NGVD29

RESERVES "A", "B", "C", AND "D" ARE RESERVED FOR
 LANDSCAPING, LAKES, OPEN SPACE, BERMS, DRAINAGE PURPOSES,
 RECREATIONAL USES, AND UTILITIES AS CONTAINED TO EASEMENTS.

RESERVES "E" AND "F" ARE RESERVED FOR ENTRY MONUMENTS,
 LANDSCAPING, OPEN SPACE, STREETS, DRAINAGE PURPOSES, AND
 UTILITIES.

RESERVES "G", "H", AND "J" ARE RESERVED FOR ENTRY
 MONUMENTS, LANDSCAPING, OPEN SPACE, DRAINAGE PURPOSES,
 AND UTILITIES AS CONTAINED TO EASEMENTS.

- PKM # 1 = RWD #4 Marker
- PP = Power Pole
- SSM = Sanitary Sewer Manhole
- = Tree
- = Cased Well
- = Guy Anchor
- ALP = High Line Pole
- MB = Mail Box
- △ = 3/4" IRON W/ "COUNTY" CAP (FOUND)
- = #4 REBAR W/ "BAUGHMAN" CAP (SET)
- = #4 REBAR (FOUND)
- = 1" IRON (FOUND)
- = 1" STEEL CAP W/ "SURVEY MARK" (FOUND)
- = STONE (FOUND)
- (M) = MEASURED
- (D) = DESCRIBED
- (P) = PLATTED
- (C) = CALCULATED



70' SEDGWICK COUNTY ELECTRIC
 COOPERATIVE ASSOCIATION, INC.
 225 W. 5TH ST.
 WICHITA, KS 67202-1041
 (316) 261-1111
 (FIRM 1772, PAGE 197)