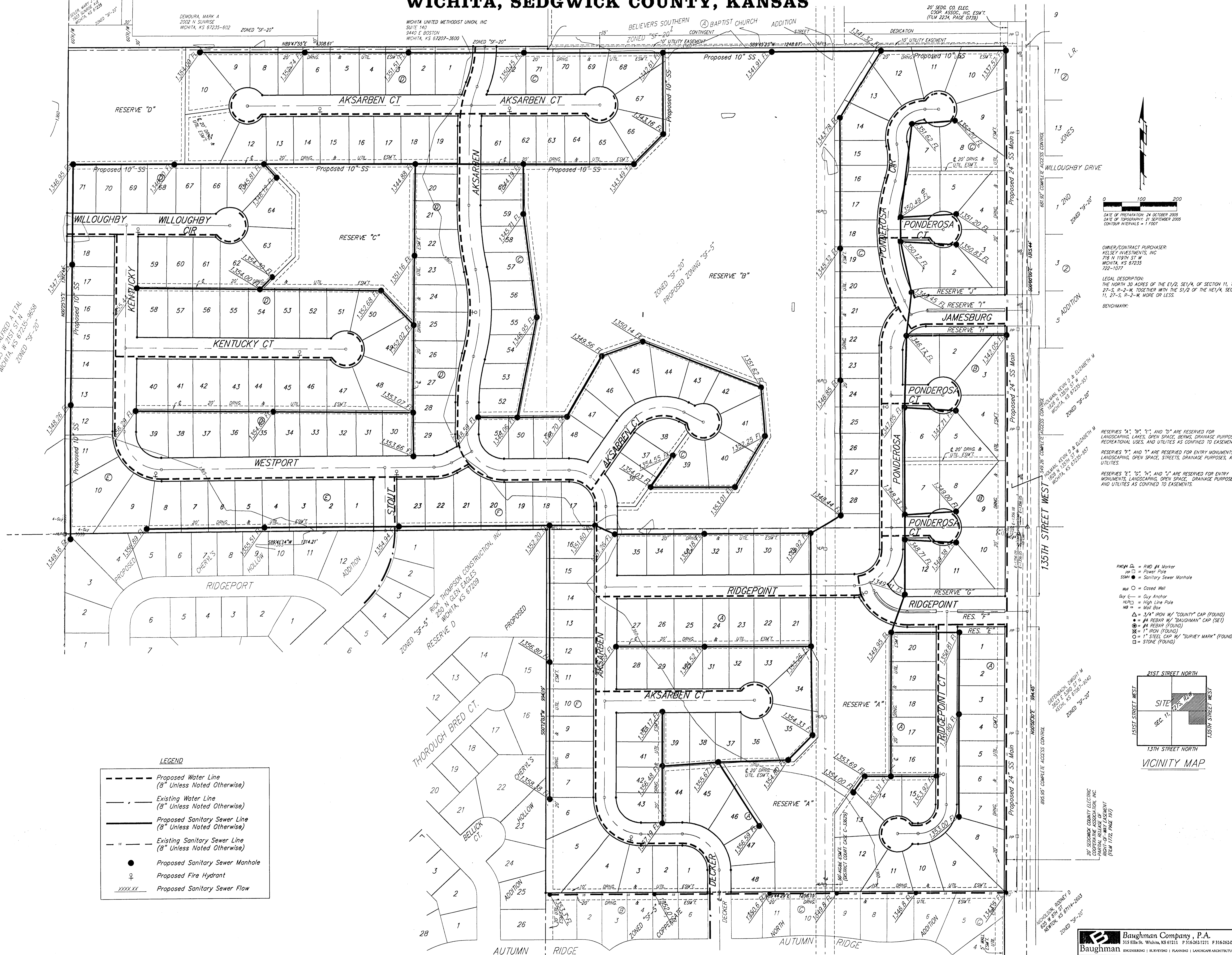


# UTILITY PLAN

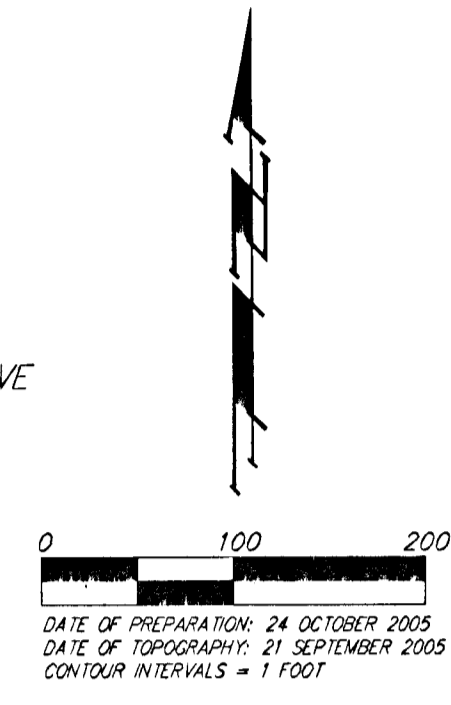
## SILVERTON ADDITION

### WICHITA, SEDGWICK COUNTY, KANSAS



**LEGEND**

	Proposed Water Line (8" Unless Noted Otherwise)
	Existing Water Line (8" Unless Noted Otherwise)
	Proposed Sanitary Sewer Line (8" Unless Noted Otherwise)
	Existing Sanitary Sewer Line (8" Unless Noted Otherwise)
	Proposed Sanitary Sewer Manhole
	Proposed Fire Hydrant
	Proposed Sanitary Sewer Flow



**OWNER/CONTRACT PURCHASER:**  
KELSEY INVESTMENTS, INC.  
718 N. 115TH ST. W.  
WICHITA, KS 67235  
722-1077

**LEGAL DESCRIPTION:**  
THE NORTH 30 ACRES OF THE E1/2, S1/4 OF SECTION 11, T1P. 25-S. R-2-W, TOGETHER WITH THE S1/2 OF THE NE1/4, SECTION 11, T7-S. R-2-W, MORE OR LESS.

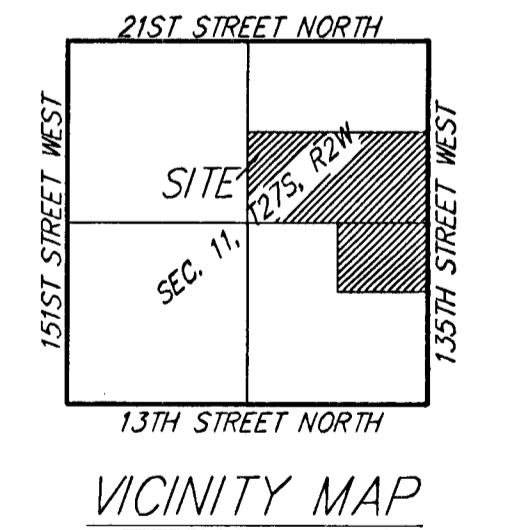
**BENCHMARK:**

RESERVES "A", "B", "C", "D" ARE RESERVED FOR LANDSCAPING, LAKES, OPEN SPACE, SEWERS, DRAINAGE PURPOSES, RECREATIONAL USES, AND UTILITIES AS CONFIRMED TO EASEMENTS.

RESERVES "E", "F", "G", "H", "I", "J" ARE RESERVED FOR ENTRY MONUMENTS, LANDSCAPING, OPEN SPACE, SEWERS, DRAINAGE PURPOSES, AND UTILITIES.

RESERVES "K", "L", "M", "N", "O" ARE RESERVED FOR ENTRY MONUMENTS, LANDSCAPING, OPEN SPACE, SEWERS, DRAINAGE PURPOSES, AND UTILITIES AS CONFIRMED TO EASEMENTS.

- IRON - RND #4 Marker
- PP - Power Pole
- SSM - Sanitary Sewer Manhole
- HW - Closed Well
- GA - Guy Anchor
- HL - High Line Pole
- MB - Manhole
- 3/4" IRON W/ "COUNTY" CAP (FOUND)
- #4 REBAR W/ "BAUGHMAN" CAP (SET)
- #4 REBAR (FOUND)
- 1" IRON (FOUND)
- 1" STEEL CAP W/ "SURVEY MARK" (FOUND)
- STONE (FOUND)



20' SEDGWICK COUNTY ELECTRIC COOPERATIVE ASSOCIATION, INC. (FORM 1772, PAGE 197)