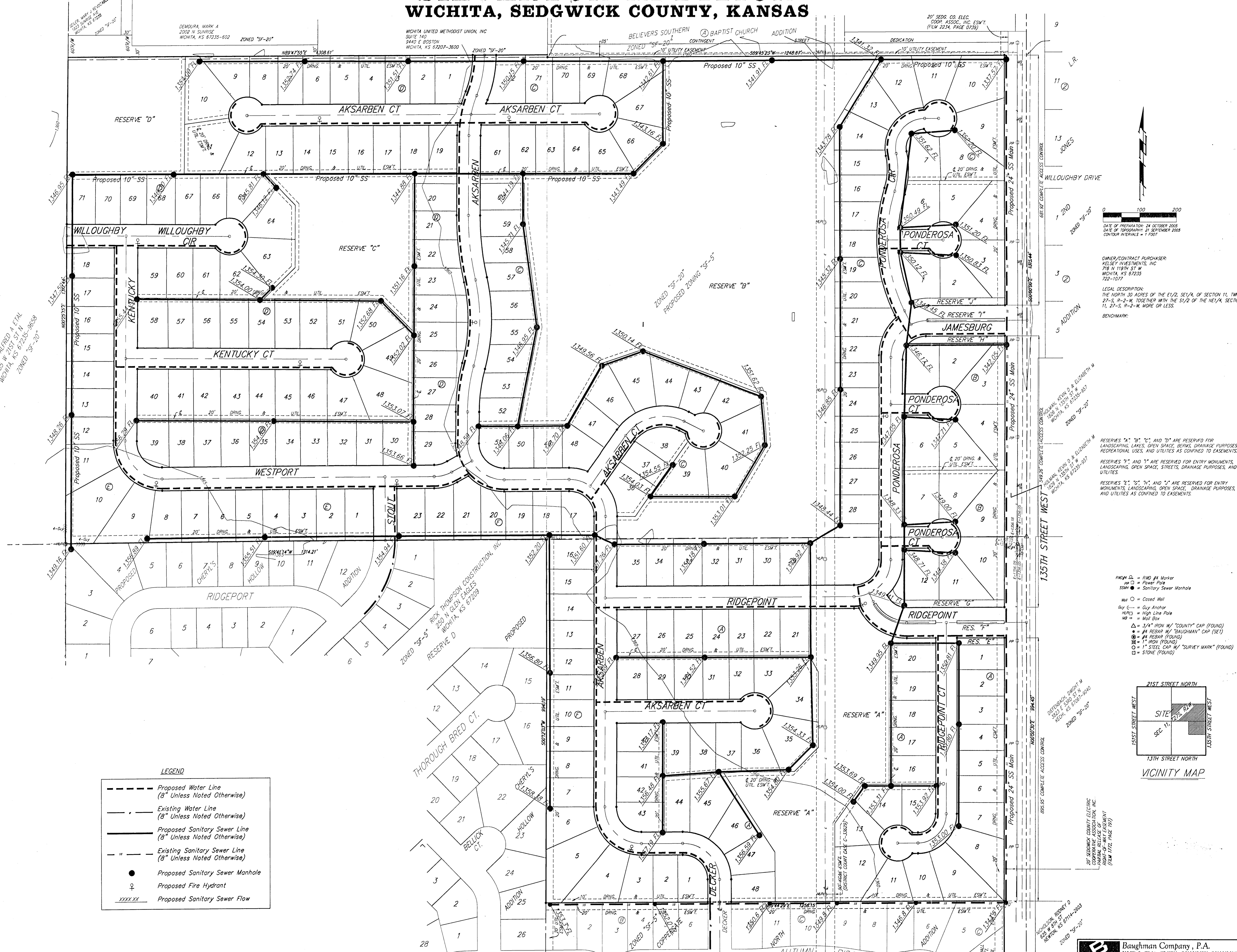


UTILITY PLAN

SILVERTON ADDITION

WICHITA, SEDGWICK COUNTY, KANSAS



LEGEND

	Proposed Water Line (8" Unless Noted Otherwise)
	Existing Water Line (8" Unless Noted Otherwise)
	Proposed Sanitary Sewer Line (8" Unless Noted Otherwise)
	Existing Sanitary Sewer Line (8" Unless Noted Otherwise)
	Proposed Sanitary Sewer Manhole
	Proposed Fire Hydrant
	Proposed Sanitary Sewer Flow

DATE OF PREPARATION: 24 OCTOBER 2008
 DATE OF TOPOGRAPHY: 21 SEPTEMBER 2008
 CONTOUR INTERVALS = 1.00'

OWNER/CONTRACT PURCHASER:
 KELSEY INVESTMENTS, INC.
 278 W 18TH ST W
 WICHITA, KS 67235
 722-1077

LEGAL DESCRIPTION:
 THE NORTH 30 ACRES OF THE E1/2, SE1/4, OF SECTION 11, T19P-27S, R-2-W, TOGETHER WITH THE 1/2 OF THE NE1/4, SECTION 11, 27-S, R-2-W, MORE OR LESS.

BENCHMARK:

RESERVES "A", "B", "C", and "D" ARE RESERVED FOR LANDSCAPING, LAKES, OPEN SPACE, BERMS, DRAINAGE PURPOSES, RECREATIONAL USES, AND UTILITIES AS CONFIRMED TO EASEMENTS.

RESERVES "E", "F", and "G" ARE RESERVED FOR ENTRY MONUMENTS, LANDSCAPING, OPEN SPACE, STREETS, DRAINAGE PURPOSES, AND UTILITIES.

RESERVES "H", "I", "J", "K", and "L" ARE RESERVED FOR ENTRY MONUMENTS, LANDSCAPING, OPEN SPACE, DRAINAGE PURPOSES, AND UTILITIES AS CONFIRMED TO EASEMENTS.

- RMH □ = 6" HD #4 Marker
- PP □ = Power Pole
- SSM ● = Sanitary Sewer Manhole
- HW ○ = Closed Well
- AY ⊕ = Guy Anchor
- HLPI ⊕ = High Line Pole
- MB ⊕ = Man Box
- △ = 3/4" IRON W/ "COUNTY" CAP (FOUND)
- = #4 REBAR W/ "BAUGHMAN" CAP (SET)
- = #4 REBAR (FOUND)
- ⊕ = 1" IRON (FOUND)
- ⊕ = 1" STEEL CAP W/ "SURVEY MARK" (FOUND)
- = STONE (FOUND)

