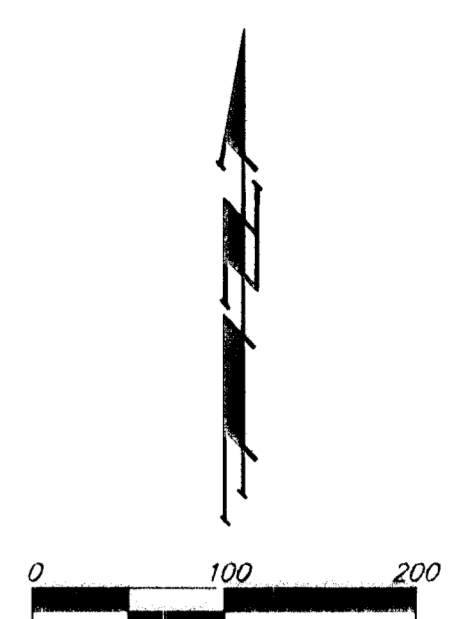
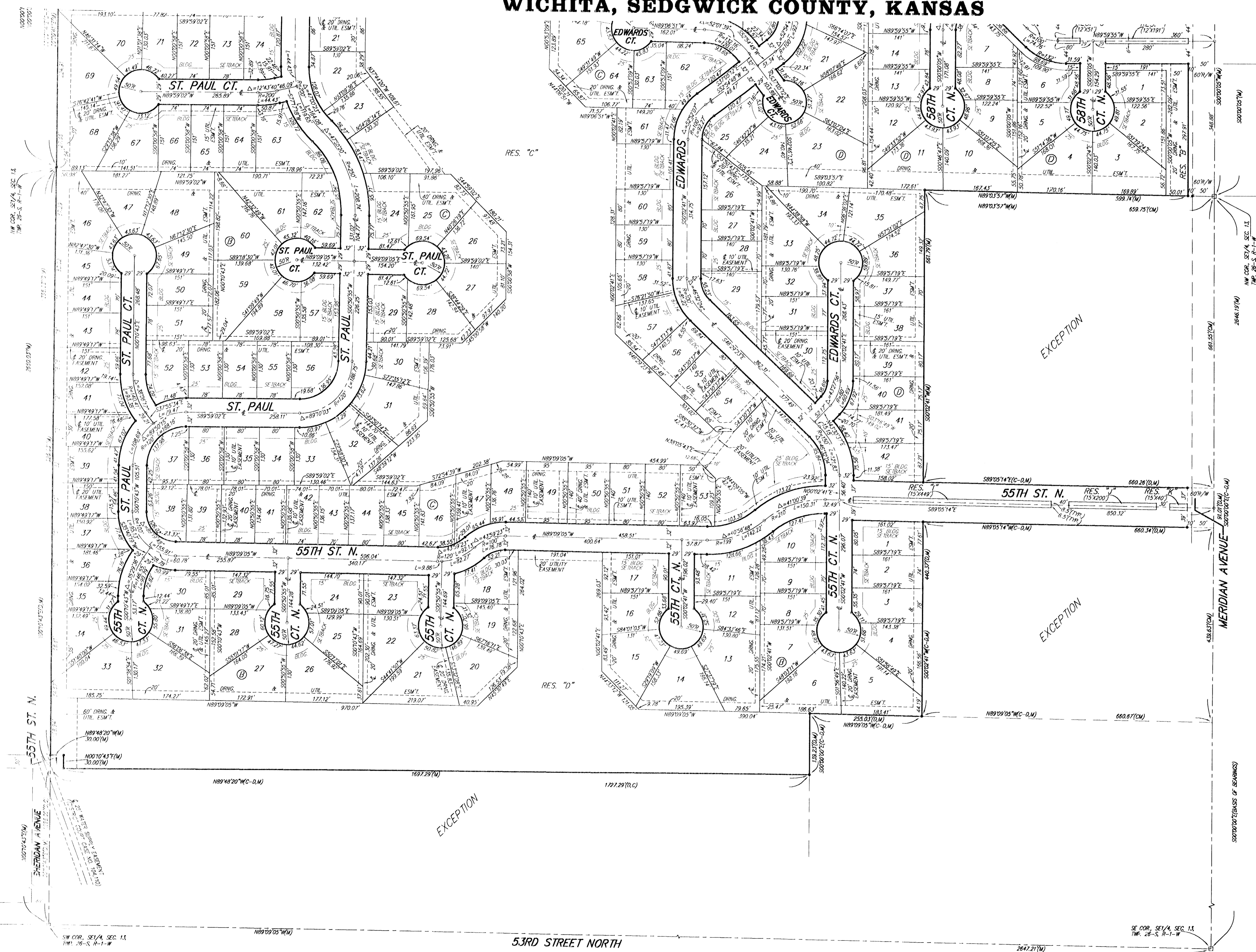


# NORTHGATE ADDITION WICHITA, SEDGWICK COUNTY, KANSAS



- = #4 REBAR W/ "BAUGHMAN" SET (SET)
- = #4 REBAR W/ "BAUGHMAN" CAP (FOUND)
- = 1/2" IRON (FOUND)
- ◇ = #5 REBAR (FOUND)
- △ = 1" SQUARE IRON BAR (FOUND)
- = #5 REBAR W/ ILLEGIBLE CAP (FOUND)

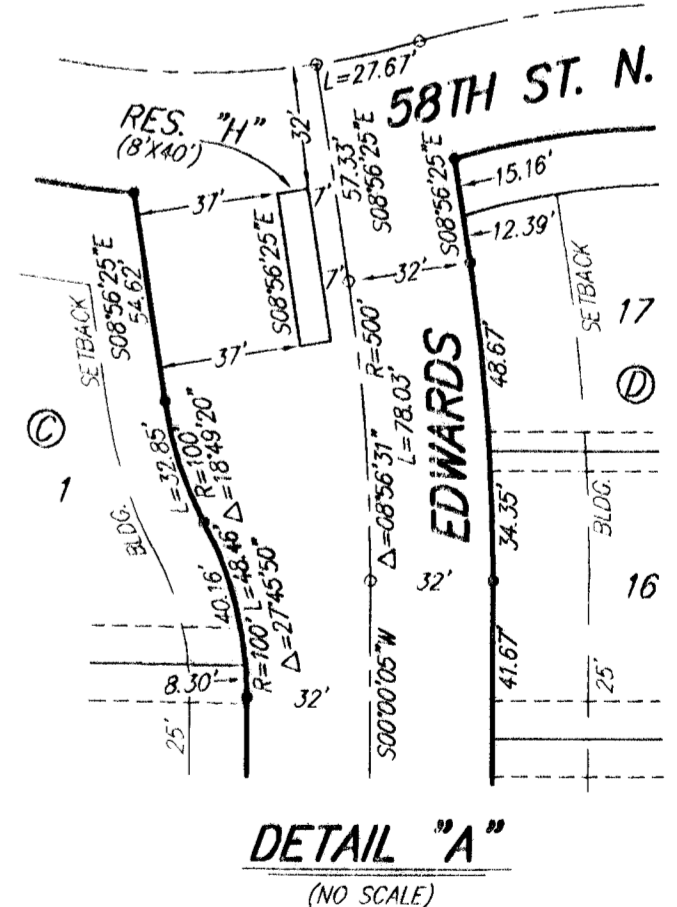
- (M) = MEASURED
- (D) = DESCRIBED
- (C) = CALCULATED
- (PF) = FLATTED INFO. PER FOR MEADOW ADD.
- (C-PF) = CALCULATED INFO. PER FOR MEADOW ADD.
- (CM) = CALCULATED PER MEASURED INFO.
- (C-D) = CALCULATED PER DESCRIBED INFO.

MINIMUM BUILDING PAD ELEVATIONS FOR LOWEST OPENING TO THE STRUCTURES		
LOT	BLOCK	ELEVATION
1-5	A	1337.0
6, 7, 13-22	B	1335.0
26, 27, 32, 33	B	1335.0
8-13, 15-28	C	1335.0
30-33, 43-52	C	1335.0
55-61, 64-66	C	1335.0
53, 54	C	1336.0

**BENCHMARK:**  
BENT 004 NAIL IN LIGHT POLE.  
60 1/2 S. OF N. LINE, 51/2 NE 1/4 COR. SEC. 13, TWP. 26-S, R-1-W  
ELEV. = 1336.54 NGVD29

RAILROAD SPIKE IN E. FACE OF N. 7" POLE.  
80 1/2 S. OF N. LINE, 51/2 NE 1/4 COR. SEC. 13, TWP. 26-S, R-1-W  
ELEV. = 1335.93 NGVD29

"L" CUT ON TOP OF NE COR. OF WATER VAULT. 437 1/2 E. & 54 1/2 N. OF S1/4 COR., SEC. 13, TWP. 26-S, R-1-W  
ELEV. = 1334.81 NGVD29



**NOTE:**  
A master grading plan for drainage has been developed for this subdivision and is on file with the City of Wichita, Kansas. All drainage easements, right-of-ways, or reserves shall remain at established grades or as modified with the approval of the City Engineer of the City of Wichita, Kansas. No obstructions which impede the flow of this drainage system be allowed.