

FINAL TRACING REC'D  
10-8-09

# SKYWAY INDUSTRIAL PARK 2ND

AN ADDITION TO WICHITA, SEDGWICK COUNTY, KANSAS

SCALE: 1" = 100'

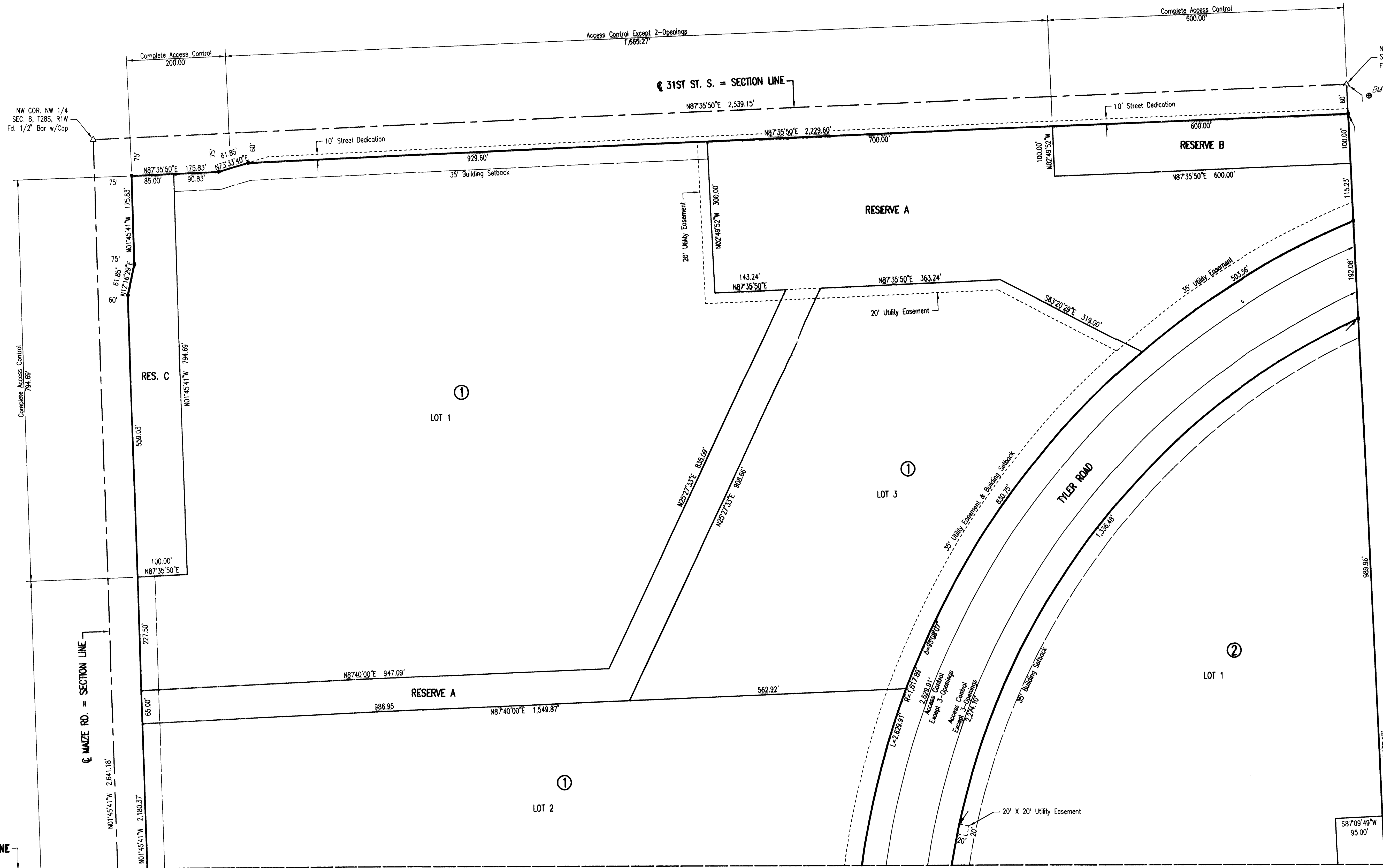
- = 1/2" REBAR W/PEC CAP UNLESS OTHERWISE NOTED
- △ = SECTION CORNER

NE COR. NW 1/4  
SEC. 8, T28S, R1W  
Fd. 1-1/2" Iron Pipe

BENCHMARKS  $\oplus$  BM

- BM #50  
A CITY OF WICHITA BRASS DISC LOCATED 50.0 FEET SE. OF THE N 1/4 CORNER OF SECTION 8, T28S, R1W.  
ELEV. 1318.06 NAVD. 88
- BM #51  
A CHISELED SQUARE ON THE SOUTHWEST END OF A CONCRETE CULVERT LOCATED ON THE NORTH SIDE OF 31ST S. AND OLD TYLER RD.  
ELEV. 1313.31 NAVD. 88
- BM #52  
A CHISELED SQUARE ON THE CENTER SOUTH CONCRETE HEADWALL OF A RCB LOCATED 335 FEET WEST MAIZE RD. ON THE SOUTH SIDE OF 31ST ST. SOUTH  
ELEV. 1331.82 NAVD. 88

MINIMUM PAD ELEVATIONS:	
LOT 1, BLOCK 1-	1326.6 (NAVD 88)
LOT 2, BLOCK 1-	1329.7 (NAVD 88)
LOT 3, BLOCK 1-	1329.7 (NAVD 88)
LOT 1, BLOCK 2-	1327.3 (NAVD 88)



Sheet 10-07-2009 1:54:54 PM by ALE  
 Plot Scale 1:100 10-07-2009 1:56:12 PM  
 C:\2009\09162\09162.FIN.PLOT 1 OF 2