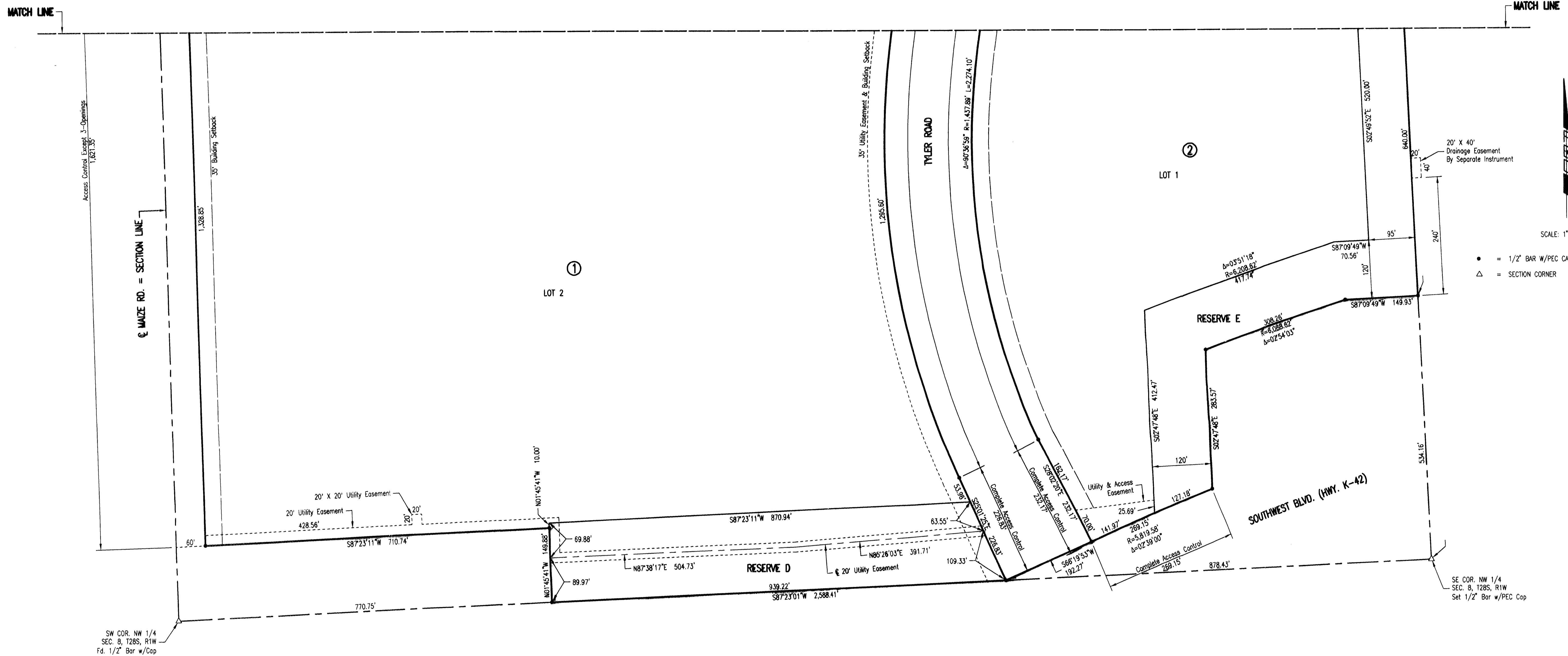


# SKYWAY INDUSTRIAL PARK 2ND

AN ADDITION TO WICHITA, SEDGWICK COUNTY, KANSAS



SCALE: 1" = 100'

- = 1/2" BAR W/PEC CAP UNLESS OTHERWISE NOTED
- △ = SECTION CORNER

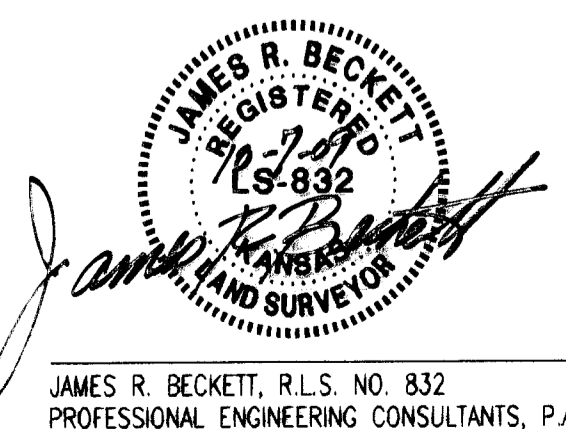
STATE OF KANSAS )  
 ) SS  
 COUNTY OF SEDGWICK )

WE, PROFESSIONAL ENGINEERING CONSULTANTS, P.A., ENGINEERS AND SURVEYORS IN AFORESAID STATE AND COUNTY, DO HEREBY CERTIFY THAT OF THIS 7TH DAY OF OCTOBER, 2009, WE HAVE SURVEYED AND PLATTED SKYWAY INDUSTRIAL PARK 2ND, AN ADDITION TO WICHITA, SEDGWICK COUNTY, KANSAS, INTO LOTS, BLOCKS, STREETS, AND RESERVES, THE SAME BEING DESCRIBED AS FOLLOWS:

PARCEL 1:  
 LOTS 1, 2, 3, 4, 5 AND 6, BLOCK A; LOT 1, BLOCK B; LOTS 1, 2, 3, 4, 5, 6, 7, 8 AND 9, BLOCK C; LOTS 1 AND 2, BLOCK D; LOT 1, BLOCK E; LOTS 1, 2, 3, 4, 5 AND 6, BLOCK F; AND RESERVES A, B, C, D AND E, ALL IN SKYWAY INDUSTRIAL PARK, AN ADDITION TO WICHITA, SEDGWICK COUNTY, KANSAS.

PARCEL 2:  
 LOT 1, AND THE NORTH 300 FEET OF LOT 2, BLOCK 1, DUGAN INDUSTRIAL THIRD ADDITION, SEDGWICK COUNTY, KANSAS.

ALL PUBLIC EASEMENTS LYING WITHIN THE ABOVE DESCRIBED TRACT OF LAND ARE HEREBY VACATED AND REPLATTED BY VIRTUE OF KSA 12-512(b) AMENDED.



JAMES R. BECKETT, R.L.S. NO. 832  
 PROFESSIONAL ENGINEERING CONSULTANTS, P.A.

ALL ABUTTER'S RIGHT OF ACCESS TO AND FROM MAZZE RD. OVER AND ACROSS THE WEST PROPERTY LINE, TO AND FROM 31ST ST. S. OVER AND ACROSS THE NORTH PROPERTY LINE AND TO AND FROM TYLER RD. AND K-42 IS HEREBY GRANTED TO THE CITY OF WICHITA, PROVIDED HOWEVER THAT THERE SHALL BE ACCESS TO MAZZE RD. AT THREE LOCATIONS, ACCESS TO 31ST ST. S. AT TWO LOCATIONS, AND ACCESS TO EACH SIDE OF TYLER RD. AT THREE LOCATIONS AS SHOWN. THERE SHALL BE COMPLETE ACCESS CONTROL ALONG K-42. THE LOCATION OF ALL ACCESS OPENINGS SHALL BE IN ACCORDANCE WITH MINIMUM SPACING REQUIREMENTS OF THE WICHITA/SEDGWICK COUNTY ACCESS MANAGEMENT STANDARDS.

THE STREETS ARE HEREBY DEDICATED TO AND FOR THE USE OF THE PUBLIC. EASEMENTS FOR THE CONSTRUCTION AND MAINTENANCE OF PUBLIC UTILITIES ARE HEREBY GRANTED.

A DRAINAGE PLAN HAS BEEN APPROVED FOR THIS PLAT. ALL DRAINAGE EASEMENTS, RIGHTS-OF-WAY, OR RESERVES SHALL REMAIN AT ESTABLISHED GRADES AND UNOBSTRUCTED TO ALLOW FOR THE CONVEYANCE OF STORM WATER, UNLESS MODIFIED WITH THE APPROVAL OF THE CITY ENGINEER.

RESERVES "A", "D" AND "E" ARE FOR DETENTION, DRAINAGE, LANDSCAPING AND UTILITIES CONFINED TO EASEMENTS. RESERVES "B" AND "C" ARE FOR LANDSCAPING AND UTILITIES CONFINED TO EASEMENTS. RESERVES "A" THRU "E" SHALL BE OWNED AND MAINTAINED BY AN OWNERS ASSOCIATION TO BE FORMED WITHIN SKYWAY INDUSTRIAL PARK 2ND.

KNOW ALL MEN BY THESE PRESENTS THAT WE, THE UNDERSIGNED PROPERTY OWNERS OF THE LAND AS ABOVE SET FORTH IN THE SURVEYOR'S CERTIFICATE, HAVE CAUSED THE LAND TO BE SURVEYED AND PLATTED INTO LOTS, BLOCKS, STREETS, AND RESERVES, THE SAME TO BE KNOWN AS SKYWAY INDUSTRIAL PARK 2ND, AN ADDITION TO WICHITA, SEDGWICK COUNTY, KANSAS.

OWNER:  
 THE CITY OF WICHITA, KANSAS, A MUNICIPAL CORPORATION  
 CARL BREWER, MAYOR

STATE OF KANSAS )  
 ) SS  
 COUNTY OF SEDGWICK )

THIS INSTRUMENT WAS ACKNOWLEDGED BEFORE ME ON THIS \_\_\_\_\_ DAY OF \_\_\_\_\_, 2009, BY CARL BREWER, MAYOR  
 \_\_\_\_\_, NOTARY PUBLIC

MY APPOINTMENT EXPIRES: \_\_\_\_\_

THIS PLAT IS APPROVED AND ALL DEDICATIONS SHOWN HEREON, IF ANY ARE ACCEPTED BY THE CITY COUNCIL OF THE CITY OF WICHITA, KANSAS, THIS \_\_\_\_\_ DAY OF \_\_\_\_\_, 2009.

CARL BREWER, MAYOR  
 KAREN SUBLETT, CITY CLERK

ENTERED ON TRANSFER RECORD THIS \_\_\_\_\_ DAY OF \_\_\_\_\_, 2009.  
 KELLY B. ARNOLD, COUNTY CLERK

THIS IS TO CERTIFY THAT THIS INSTRUMENT WAS FILED FOR RECORD IN THE REGISTER OF DEEDS OFFICE AT \_\_\_\_\_, M., ON THE \_\_\_\_\_ DAY OF \_\_\_\_\_, 2009.

BILL WEEK, REGISTER OF DEEDS  
 TONYA BUCKINGHAM, DEPUTY

STATE OF KANSAS )  
 ) SS  
 COUNTY OF SEDGWICK )

THIS PLAT OF SKYWAY INDUSTRIAL PARK 2ND HAS BEEN SUBMITTED TO AND APPROVED BY THE WICHITA-SEDGWICK COUNTY METROPOLITAN AREA PLANNING COMMISSION, WICHITA, KANSAS.

DATED THIS \_\_\_\_\_ DAY OF \_\_\_\_\_, 2009.  
 WICHITA-SEDGWICK COUNTY METROPOLITAN AREA PLANNING COMMISSION

DARRELL DOWNING, CHAIR  
 JOHN L. SCHLEGEL, SECRETARY

REVIEWED IN ACCORDANCE WITH K.S.A. 58-2005 ON THIS \_\_\_\_\_ DAY OF \_\_\_\_\_, 2009.

TRICIA L. ROBELLO, L.S. #1246  
 DEPUTY COUNTY SURVEYOR  
 SEDGWICK COUNTY KANSAS