

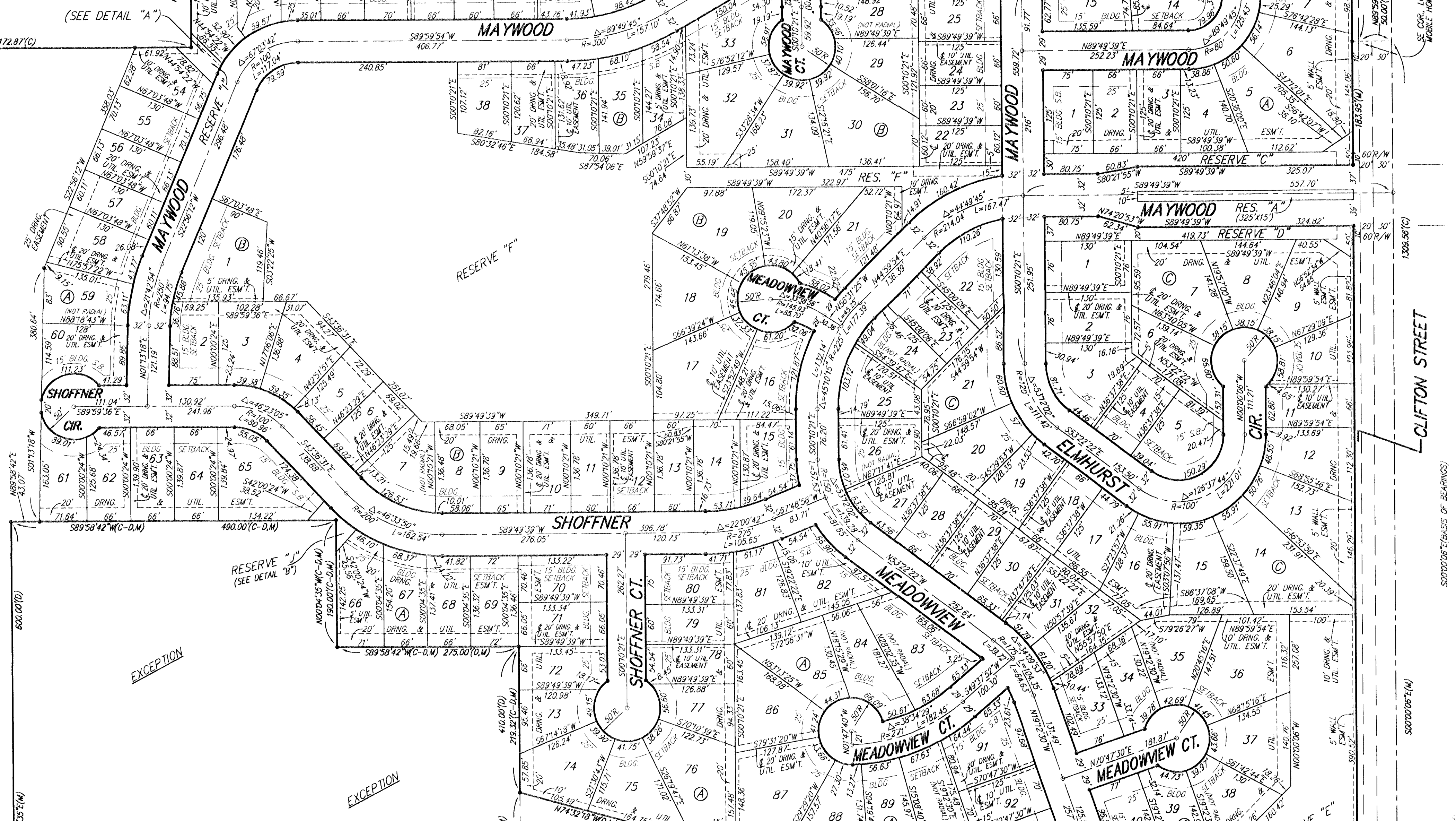
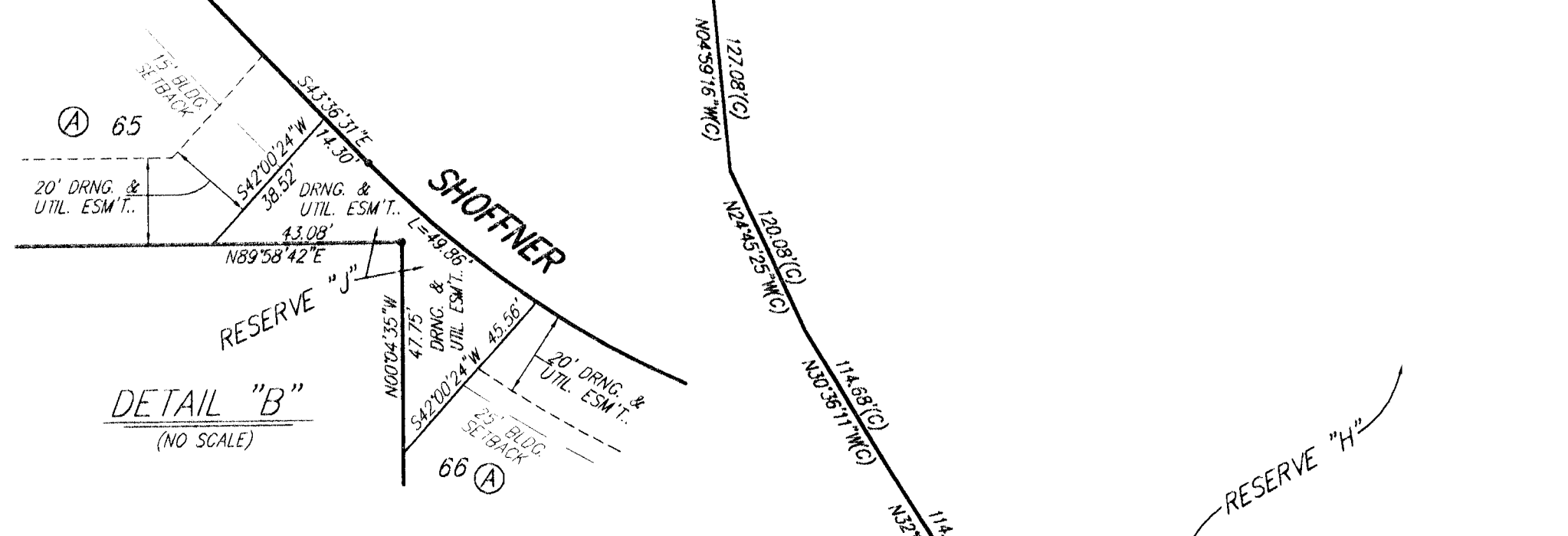
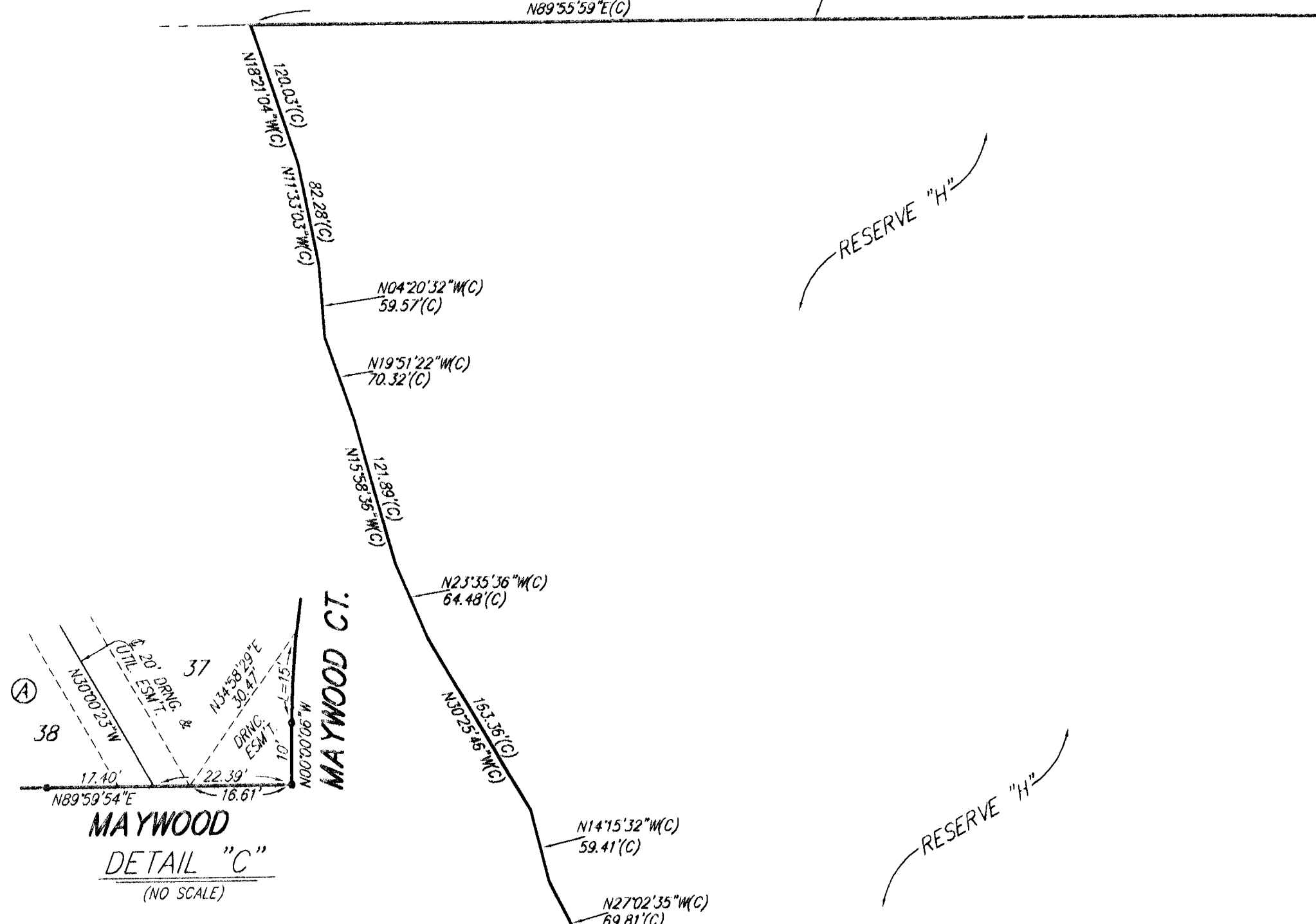
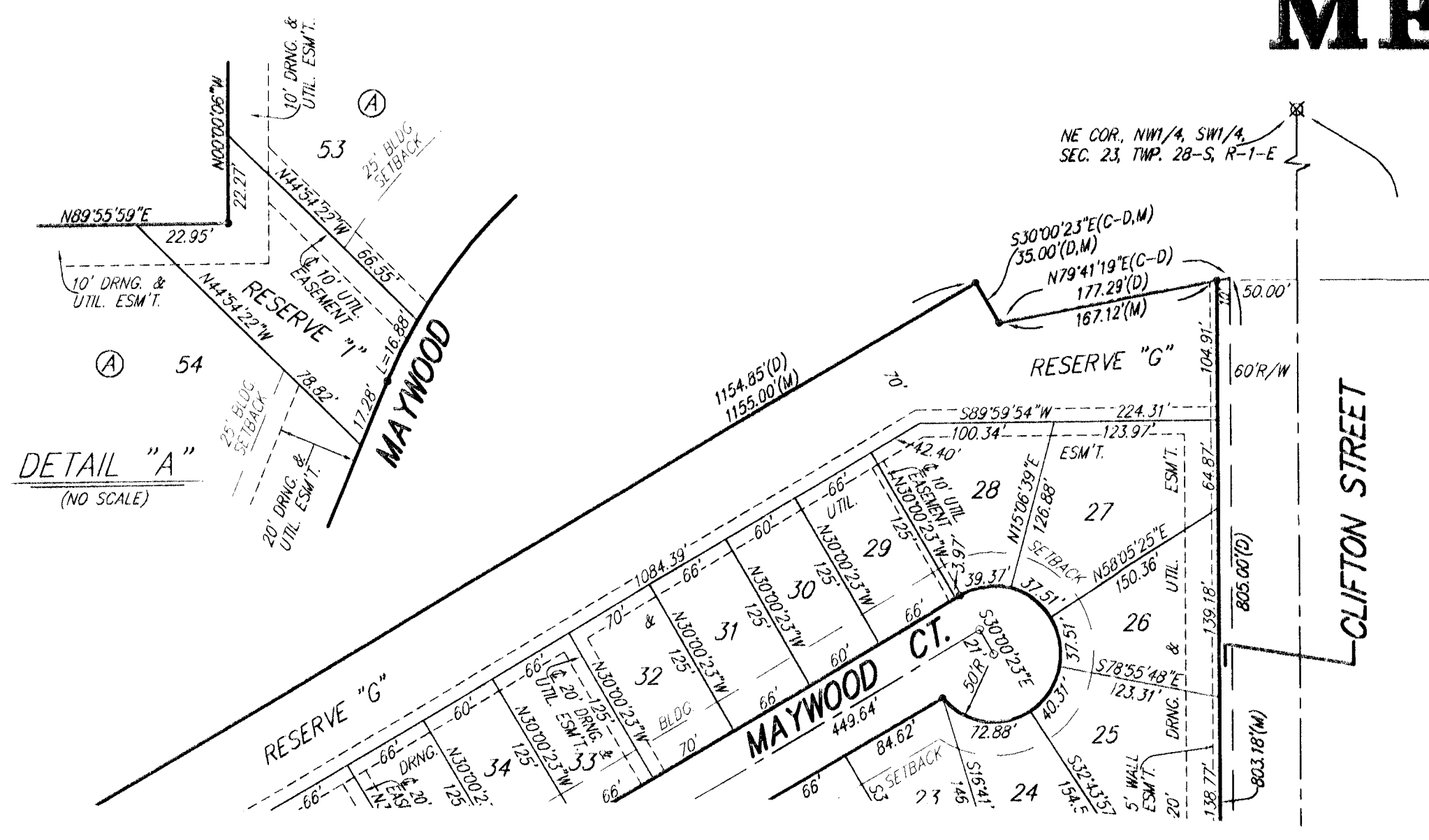
# MEADOWLAKE BEACH ADDITION

## WICHITA, SEDGWICK COUNTY, KANSAS

MINIMUM BUILDING PAD ELEVATIONS FOR LOWEST OPENING TO THE STRUCTURES

LOT	BLOCK	ELEVATION
1-93	A	1265.0
1-10	B	1265.0
11-13	B	1265.2
14-16, 19-22, 24-32, 34-38	B	1265.5
17, 18, 23, 33	B	1266.0
1-3, 6, 14, 17-20, 24, 32, 35-40	C	1265.0
4, 5, 7, 22, 23, 27, 29, 33, 34	C	1265.5
8, 28	C	1266.0
9-13, 15, 16, 21, 25, 26, 30, 31	C	1264.5

BENCHMARK:  
CITY OF WICHITA BENCHMARK DISC, SE CORNER OF CLIFTON AND 53TH ST. S., SOUTHWEST CORNER OF ROAD ON TOP OF HUBGUARD AT THE WEST END. ELEV. = 1263.29 NGVD29



EXCEPTION

EXCEPTION

50000000' (BASED ON BEARINGS)

50000000' (M)