

# MEADOWLAKE BEACH ADDITION

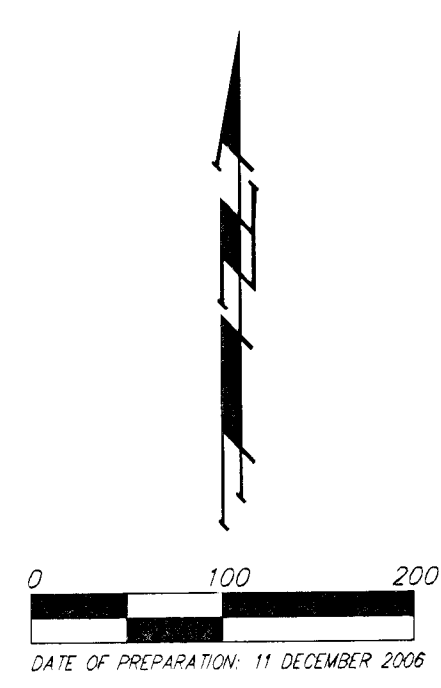
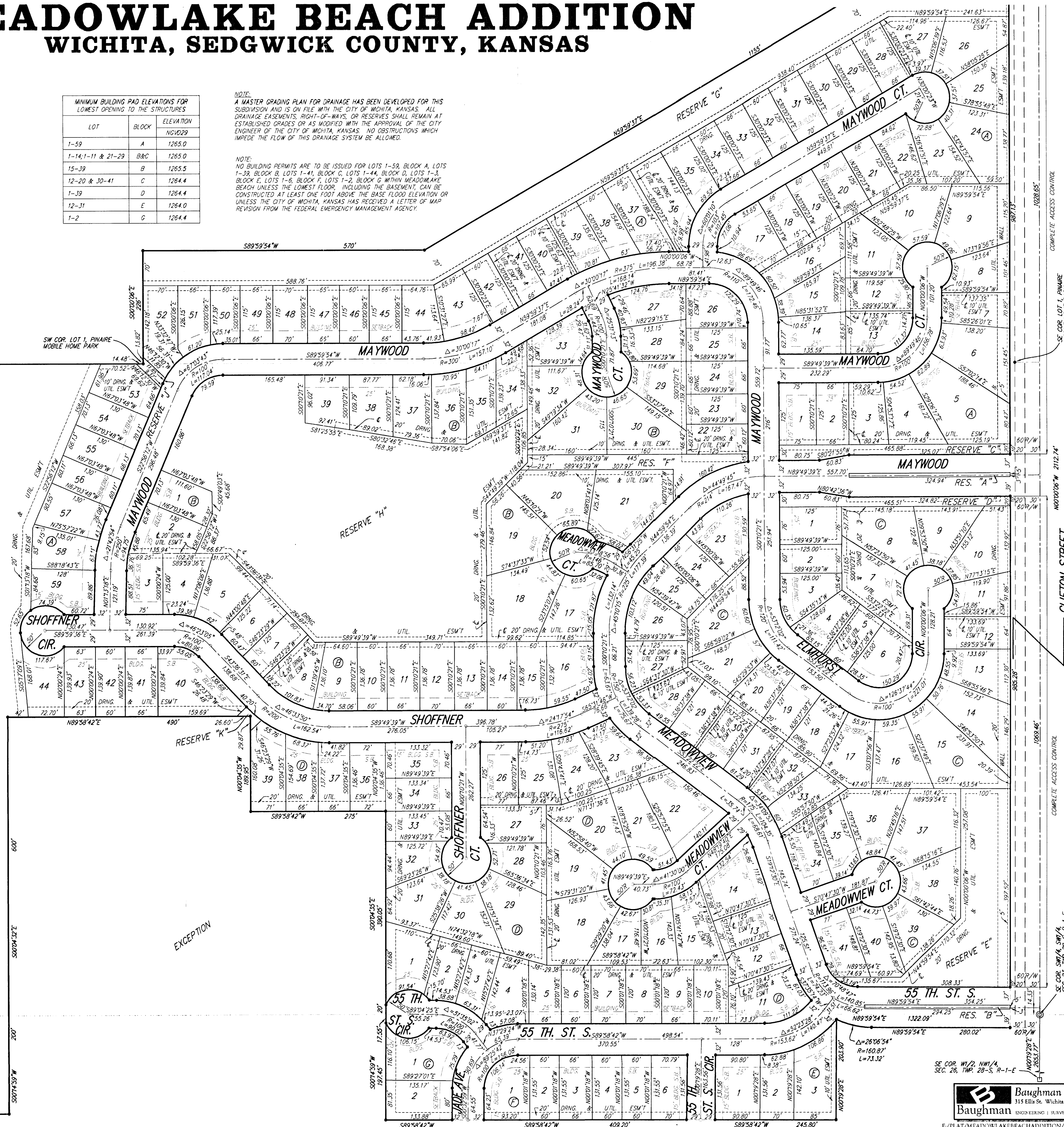
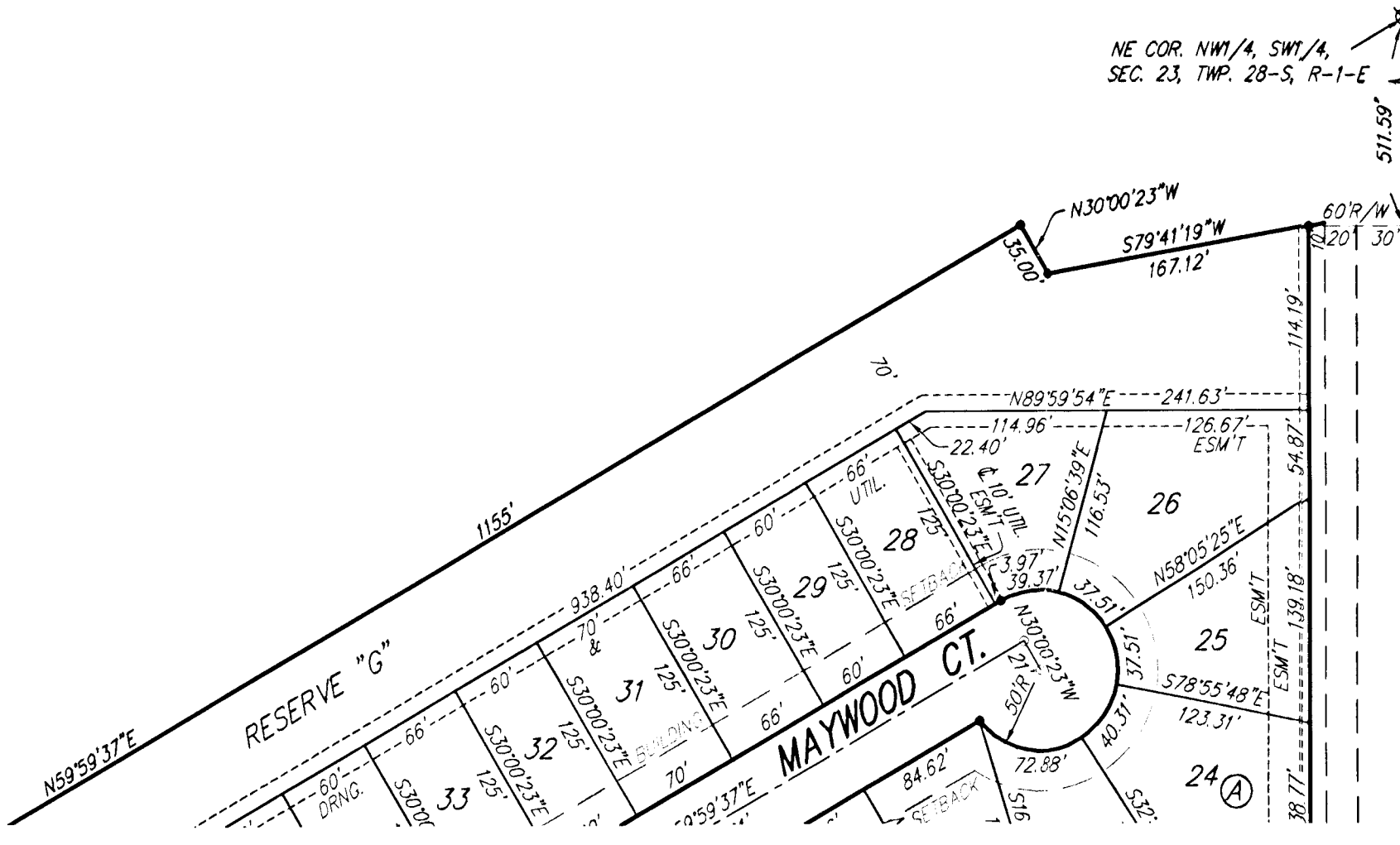
## WICHITA, SEDGWICK COUNTY, KANSAS

NE COR. NW1/4, SW1/4,  
SEC. 23, TWP. 28-S, R-1-E

LOT	BLOCK	ELEVATION
1-59	A	1265.0
1-14, 1-11 & 21-29	B&C	1265.0
15-39	B	1265.5
12-20 & 30-41	C	1264.4
1-39	D	1264.4
12-31	E	1264.0
1-2	G	1264.4

NOTE:  
A MASTER GRADING PLAN FOR DRAINAGE HAS BEEN DEVELOPED FOR THIS SUBDIVISION AND IS ON FILE WITH THE CITY OF WICHITA, KANSAS. ALL DRAINAGE EASEMENTS, RIGHT-OF-WAYS, OR RESERVES SHALL REMAIN AT ESTABLISHED GRADES OR AS MODIFIED WITH THE APPROVAL OF THE CITY ENGINEER OF THE CITY OF WICHITA, KANSAS. NO OBSTRUCTIONS WHICH IMPEDE THE FLOW OF THIS DRAINAGE SYSTEM BE ALLOWED.

NOTE:  
NO BUILDING PERMITS ARE TO BE ISSUED FOR LOTS 1-59, BLOCK A, LOTS 1-39, BLOCK B, LOTS 1-41, BLOCK C, LOTS 1-44, BLOCK D, LOTS 1-1, BLOCK E, LOTS 1-8, BLOCK F, LOTS 1-2, BLOCK G WITHIN MEADOWLAKE BEACH UNLESS THE LOWEST FLOOR, INCLUDING THE BASEMENT, CAN BE CONSTRUCTED AT LEAST ONE FOOT ABOVE THE BASE FLOOD ELEVATION OR UNLESS THE CITY OF WICHITA, KANSAS HAS RECEIVED A LETTER OF MAP REVISION FROM THE FEDERAL EMERGENCY MANAGEMENT AGENCY.



- = #4 REBAR W/ "BAUGHMAN" CAP (SET)
  - ⊗ = 3/4" IRON (FOUND)
  - = 1/2" IRON (FOUND)
  - ⊕ = #5 REBAR W/ ALLEGIABLE CAP (FOUND)
  - ⊙ = BOLT W/ 3" DIA. HEAD (FOUND)
  - = 1" IRON OVER STONE (FOUND)
- (M) = MEASURED  
(D) = DESCRIBED  
(C) = CALCULATED  
(C-D) = CALCULATED PER DESCRIBED INFO.

NOTE:  
ALL LOTS WITHIN MEADOWLAKE BEACH ADDITION SHALL HAVE A 5 FOOT SIDE YARD BUILDING SETBACK.

BENCHMARK:  
CITY OF WICHITA BENCHMARK DISC, SE CORNER OF CLIFTON AND 55TH ST. S. SOUTHWEST CORNER OF P&O CO. ON TOP OF HUBBLARD AT THE WEST END. ELEV. = 1263.29 NGVD29

**Baughman Company, P.A.**  
315 Ella St. Wichita, KS 67211 P 316-262-7271 F 316-262-0149  
ENGINEERING | SURVEYING | PLANNING | LANDSCAPE ARCHITECTURE