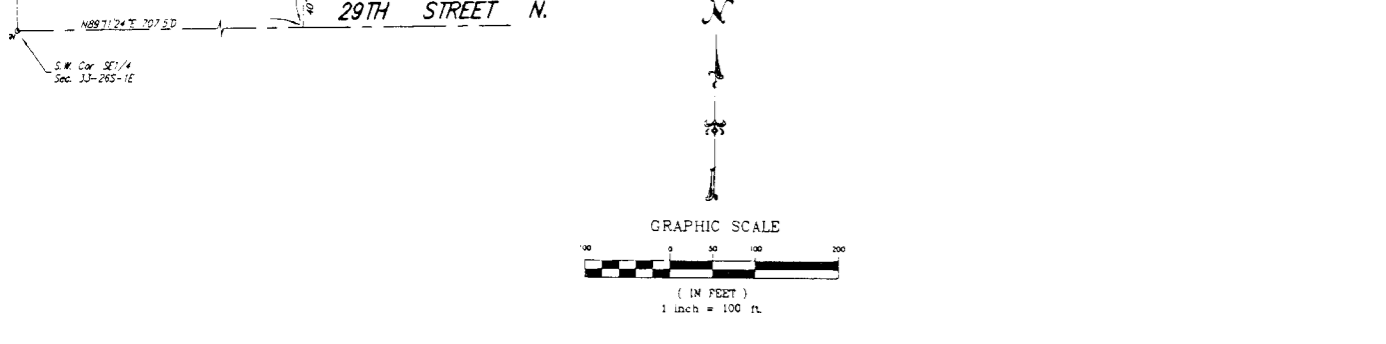
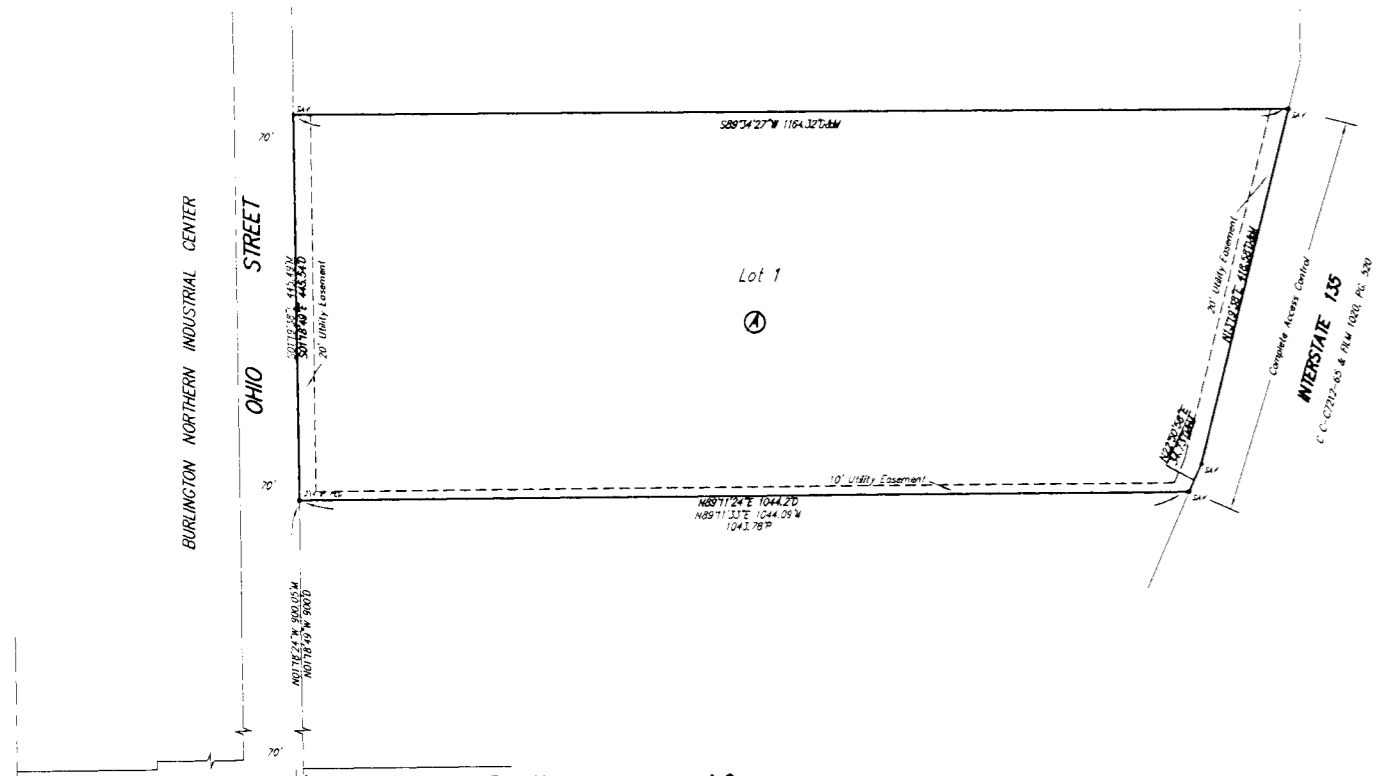


MOLITOR ADDITION

Wichita, Sedgwick County, Kansas



- C.A.C. = Complete Access Control
- P = Plotted
M = Measured
D = Discovered
- SURVEY MARKER LEGEND**
- ⊙ = CITY OF WICHITA CONTROL NUMBER (FOUND)
 - ⊙ = 1" IRON PIPE (FOUND)
 - ⊙ = 3/4" IRON PIPE (FOUND)
 - ⊙ = 3/4" IRON PIPE W/REBAR CAP (FOUND)
 - ⊙ = 3/4" REBAR (FOUND)
 - ⊙ = 1/2" REBAR (FOUND)
 - ⊙ = 1/2" REBAR W/SHOULDER CAP (SET)

State of Kansas) SS
Sedgwick County)

We, Savoy Company, P.A., Surveyors in aforesaid county and state do hereby certify that, under the supervision of the undersigned, we have surveyed and platted "MOLITOR ADDITION", Wichita, Sedgwick County, Kansas and that the accompanying plot is a true and correct exhibit of the property surveyed, described as:

That part of the SE1/4 of Sec. 33, Twp. 26-S, R-1-E of the 6th P.M., Sedgwick County, Kansas described as: Commencing at the S.W. Corner of said SE1/4; thence N89°11'24"E, along the south line of said SE1/4, 707.5 feet to the east line of Ohio Street as platted in Burlington Northern Industrial Center, Wichita, Sedgwick County, Kansas; thence N01°18'49"W, along the east line of said Ohio Street, 900 feet to the N.W. Corner of Lot 1, Block 1, Redburn 2nd Addition to Wichita, Sedgwick County, Kansas, for a place of beginning; thence N89°11'24"E, along the north line of said Redburn Addition and being parallel with the south line of said SE1/4, 1044.20 feet to the west line of Interstate Highway 135 as Condemned in District Court Case C-7212; thence N22°50'58"E, along said west line, 34.73 feet to a point of intersection with the west line of property deeded for Highway purposes, as recorded on Film 1020 at Page 524; thence N13°19'38"E, along the west line of said Film 1020 at Page 524, 418.58 feet to the S.E. Corner of property deeded on Film 1189 at Page 702; thence S89°34'27"W, along the south line of said Film 1189 at Page 702, and extended, 1164.32 feet to the east line of said Ohio Street; thence S01°18'49"E, along the east line of said Ohio Street, 445.54 feet to the place of beginning.

All Public easements and dedications being vacated by virtue of K.S.A. 12-512(b).

Savoy Company, P.A.
Date: _____
Mark A. Savoy RLS #788
Surveyor

Know all men by these presents that we, the undersigned, have caused the land described in the surveyors certificate to be platted into a Lot, and Block to be known as "MOLITOR ADDITION", Wichita, Sedgwick County, Kansas. The Utility easements are hereby granted as indicated for the construction and maintenance of all public utilities. A drainage plan has been developed for this plat and all drainage easements and rights-of-way shall remain at established grades or modified with the approval of the Engineer of the appropriate governing body, and unobstructed to allow for the conveyance of stormwater. Access Controls are hereby granted to the appropriate governing body as indicated on the face of the plat.

Molitor L.L.C.
Peter J. Molitor
Manager

State of Kansas) SS
Sedgwick County)

The foregoing instrument acknowledged before me, this _____ day of _____, 2005, by Peter J. Molitor, Manager of Molitor L.L.C., on behalf of the corporation.

My App't. Exp. _____
Notary Public

This plat of "MOLITOR ADDITION", Wichita, Sedgwick County, Kansas, has been submitted to and approved by the Wichita Sedgwick County Metropolitan Area Planning Commission, Wichita, Kansas.

Dated this _____ day of _____, 2004.
Wichita-Sedgwick County Metropolitan Area Planning Commission

Chairman
Marris K. Dunlap
Secretary
John L. Schlegel

This plat approved and all dedications shown hereon, are hereby accepted by the City Council of the City of Wichita, Kansas, dated this day _____ of _____, 2005.

Mayor
Carlos Mayans
City Clerk
Karen Sublett

Reviewed in accordance with K.S.A. 58-2005 on this day of _____, 2005.

Deputy County Surveyor
Tricia L. Rabala, L.S. #1246

Entered on transfer record this _____ day of _____, 2005.

County Clerk
Dan Broce

State of Kansas) SS
Sedgwick County)

This is to certify that this plat has been filed for record in the office of the Register of Deeds, this _____ day of _____, 2005, at _____ o'clock _____ M.; and is duly recorded.

Register of Deeds
Bill Meek
Deputy
Linda Kizzire