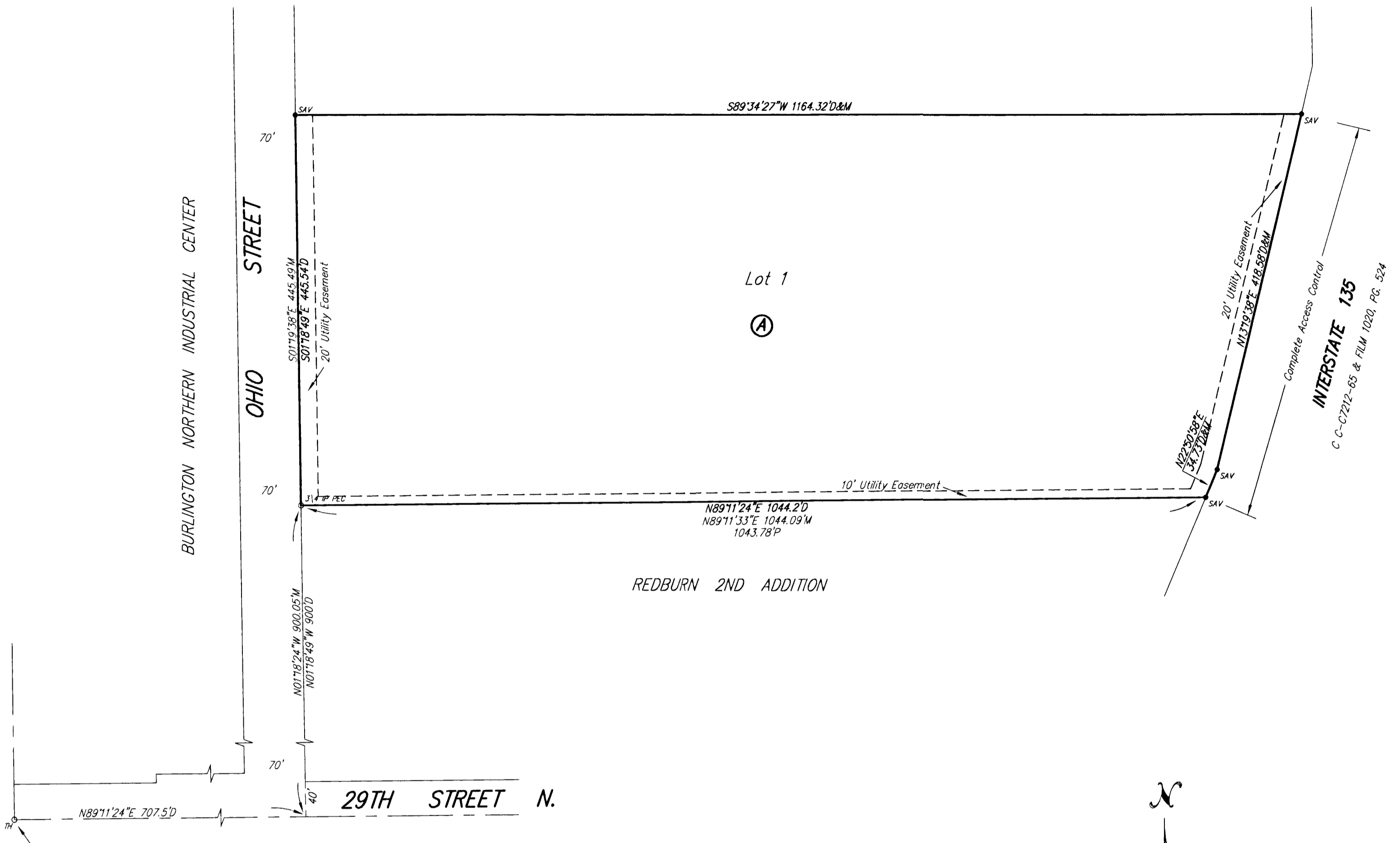


MOLITOR ADDITION

Wichita, Sedgwick County, Kansas



State of Kansas) SS
Sedgwick County)

We, Savoy Company, P.A., Surveyors in aforesaid county and state do hereby certify that, under the supervision of the undersigned, we have surveyed and platted "MOLITOR ADDITION", Wichita, Sedgwick County, Kansas and that the accompanying plat is a true and correct exhibit of the property surveyed, described as:

That part of the SE1/4 of Sec. 33, Twp. 26-S, R-1-E of the 6th P.M., Sedgwick County, Kansas described as: Commencing at the S.W. Corner of said SE1/4; thence N89°11'24"E, along the south line of said SE1/4, 707.5 feet to the east line of Ohio Street as platted in Burlington Northern Industrial Center, Wichita, Sedgwick County, Kansas; thence N01°18'49"W, along the east line of said Ohio Street, 900 feet to the N.W. Corner of Lot 1, Block 1, Redburn 2nd Addition to Wichita, Sedgwick County, Kansas, for a place of beginning; thence N89°11'24"E, along the north line of said Redburn Addition and being parallel with the south line of said SE1/4, 1044.20 feet to the west line of Interstate highway 135 as Condemned in District Court Case C-7212; thence N22°50'58"E, along said west line, 34.73 feet to a point of intersection with the west line of property deeded for Highway purposes, as recorded on Film 1020 at Page 524; thence N13°19'38"E, along the west line of said Film 1020 at Page 524, 418.58 feet to the S.E. Corner of property deeded on Film 1189 at Page 702; thence S89°34'27"W, along the south line of said Film 1189 at Page 702, and extended, 1164.32 feet to the east line of said Ohio Street; thence S01°18'49"E, along the east line of said Ohio Street, 445.54 feet to the place of beginning.

This plat of "MOLITOR ADDITION", Wichita, Sedgwick County, Kansas, has been submitted to and approved by the Wichita Sedgwick County Metropolitan Area Planning Commission, Wichita, Kansas.

Dated this _____ day of _____, 2005.
Wichita-Sedgwick County Metropolitan Area Planning Commission

Chairman
Morris K. Dunlap

Secretary
John L. Schlegel

This plat approved and all dedications shown hereon, are hereby accepted by the City Council of the City of Wichita, Kansas, dated this day _____ of _____, 2005.

Mayor
Carlos Mayans

City Clerk
Karen Sublett

All Public easements and dedications being vacated by virtue of K.S.A. 12-512(b).

Savoy Company, P.A.

Date: _____

Surveyor
Mark A. Savoy RLS #788

Reviewed in accordance with K.S.A. 58-2005 on this _____ day of _____, 2005.

Deputy County Surveyor
Sedgwick County, Kansas
Tricia L. Robello, L.S. #1246

Entered on transfer record this _____ day of _____, 2005.

County Clerk
Donald Brace

State of Kansas) SS
Sedgwick County)

This is to certify that this plat has been filed for record in the office of the Register of Deeds, this _____ day of _____, 2005, at _____ o'clock _____ M. and is duly recorded.

Register of Deeds
Bill Meek

Deputy
Tonya Buckingham

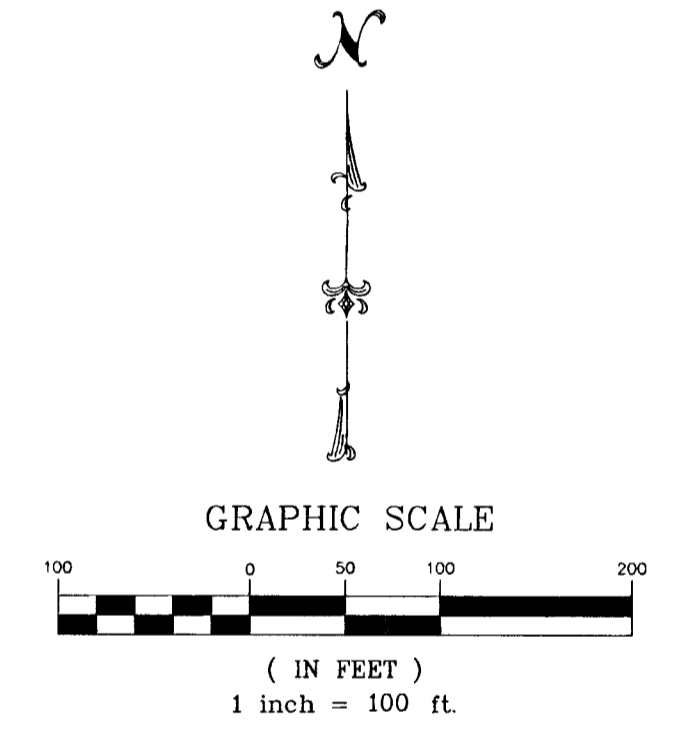
Molitor L.L.C.

Manager
Peter J. Molitor

State of Kansas) SS
Sedgwick County)

The foregoing instrument acknowledged before me, this _____ day of _____, 2005, by Peter J. Molitor, Manager of Molitor L.L.C., on behalf of the corporation.

Notary Public
My App't. Exp. _____



C.A.C. = Complete Access Control
P = Platted
M = Measured
D = Described

SURVEY MARKER LEGEND
1/2" = CITY OF WICHITA CONTROL THIMBLE (FOUND)
1/4" = 1" IRON PIPE (FOUND)
3/4" = 3/4" IRON PIPE (FOUND)
3/4" = 3/4" IRON PIPE W/PEC CAP (FOUND)
3/4" = 3/4" REBAR (FOUND)
1/2" = 1/2" REBAR (FOUND)
3/4" = 1/2" REBAR W/SAVOY CAP (SET)

