

# MOLITOR ADDITION

## Wichita, Sedgwick County, Kansas



State of Kansas) SS  
Sedgwick County)

This plat of "MOLITOR ADDITION", Wichita, Sedgwick County, Kansas, has been submitted to and approved by the Wichita Sedgwick County Metropolitan Area Planning Commission, Wichita, Kansas.

We, Savoy Company, P.A., Surveyors in aforesaid county and state do hereby certify that, under the supervision of the undersigned, we have surveyed and platted "MOLITOR ADDITION", Wichita, Sedgwick County, Kansas and that the accompanying plat is a true and correct exhibit of the property surveyed, described as:

Dated this \_\_\_\_\_ day of \_\_\_\_\_, 2005.

Wichita-Sedgwick County Metropolitan Area Planning Commission

\_\_\_\_\_  
Chairman  
Morris K. Dunlap

\_\_\_\_\_  
Secretary  
John L. Schlegel

This plat approved and all dedications shown hereon, are hereby accepted by the City Council of the City of Wichita, Kansas, dated this day \_\_\_\_\_ of \_\_\_\_\_, 2005.

\_\_\_\_\_  
Mayor  
Carlos Mayans

\_\_\_\_\_  
City Clerk  
Karen Sublett

That part of the SE1/4 of Sec. 33, Twp. 26-S, R-1-E of the 6th P.M., Sedgwick County, Kansas described as: Commencing at the S.W. Corner of said SE1/4; thence N89°11'24"E, along the south line of said SE1/4, 707.5 feet to the east line of Ohio Street as platted in Burlington Northern Industrial Center, Wichita, Sedgwick County, Kansas; thence N01°18'49"W, along the east line of said Ohio Street, 900 feet to the N.W. Corner of Lot 1, Block 1, Redburn 2nd Addition to Wichita, Sedgwick County, Kansas, for a place of beginning; thence N89°11'24"E, along the north line of said Redburn Addition and being parallel with the south line of said SE1/4, 1044.20 feet to the west line of Interstate highway 135 as Condemned in District Court Case C-7212; thence N22°50'58"E, along said west line, 34.73 feet to a point of intersection with the west line of property deeded for Highway purposes, as recorded on Film 1020 at Page 524; thence N13°19'38"E, along the west line of said Film 1020 at Page 524, 418.58 feet to the S.E. Corner of property deeded on Film 1189 at Page 702; thence S89°34'27"W, along the south line of said Film 1189 at Page 702, and extended, 1164.32 feet to the east line of said Ohio Street; thence S01°18'49"E, along the east line of said Ohio Street, 445.54 feet to the place of beginning.

All Public easements and dedications being vacated by virtue of K.S.A. 12-512(b).

Savoy Company, P.A.

Date: \_\_\_\_\_

\_\_\_\_\_  
Surveyor  
Mark A. Savoy RLS #788

Reviewed in accordance with K.S.A. 58-2005 on this \_\_\_\_\_ day of \_\_\_\_\_, 2005.

\_\_\_\_\_  
Deputy County Surveyor  
Sedgwick County, Kansas  
Tricia L. Robello, L.S. #1246

Entered on transfer record this \_\_\_\_\_ day of \_\_\_\_\_, 2005.

\_\_\_\_\_  
County Clerk  
Donald Brace

State of Kansas) SS  
Sedgwick County)

This is to certify that this plat has been filed for record in the office of the Register of Deeds, this \_\_\_\_\_ day of \_\_\_\_\_, 2005, at \_\_\_\_\_ o'clock \_\_\_\_\_ M: and is duly recorded.

Molitor L.L.C.  
\_\_\_\_\_  
Manager  
Peter J. Molitor

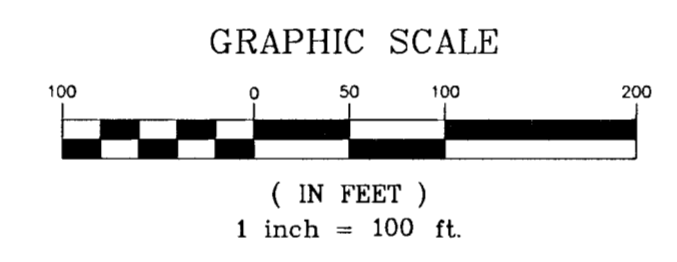
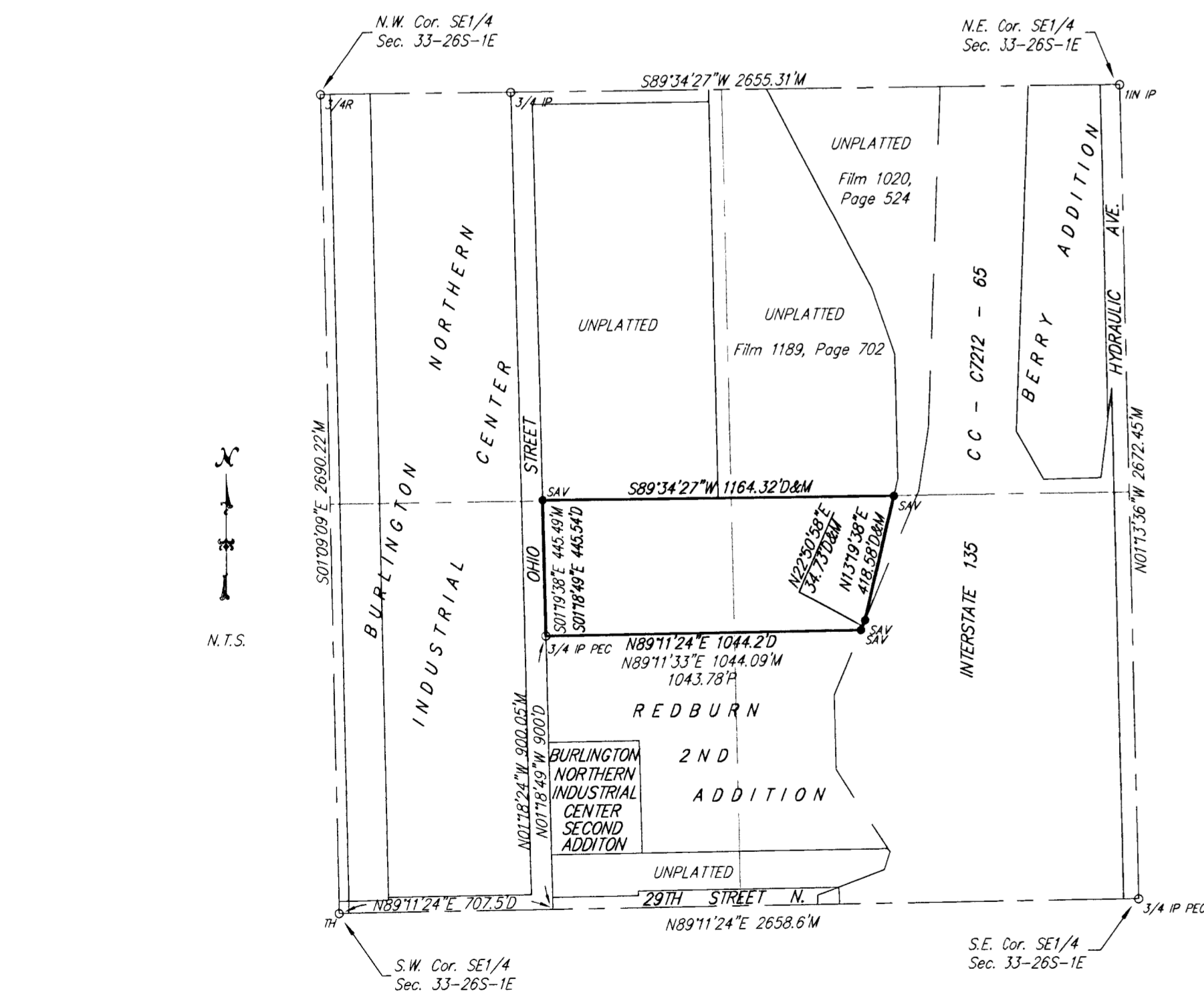
\_\_\_\_\_  
Register of Deeds  
Bill Meek

State of Kansas) SS  
Sedgwick County)

The foregoing instrument acknowledged before me, this \_\_\_\_\_ day of \_\_\_\_\_, 2005, by Peter J. Molitor, Manager of Molitor L.L.C., on behalf of the corporation.

\_\_\_\_\_  
Deputy  
Tonya Buckingham

My App't. Exp \_\_\_\_\_  
\_\_\_\_\_  
Notary Public



C.A.C. = Complete Access Control

P = Platted  
M = Measured  
D = Described

### SURVEY MARKER LEGEND

- ⊙ = CITY OF WICHITA CONTROL THIMBLE (FOUND)
- ⊙ = 1" IRON PIPE (FOUND)
- ⊙ = 3/4" IRON PIPE (FOUND)
- ⊙ = 3/4" IRON PIPE W/PEC CAP (FOUND)
- ⊙ = 3/4" REBAR (FOUND)
- ⊙ = 1/2" REBAR (FOUND)
- ⊙ = 1/2" REBAR W/SAVOY CAP (SET)