

FLOOD ZONE MAP

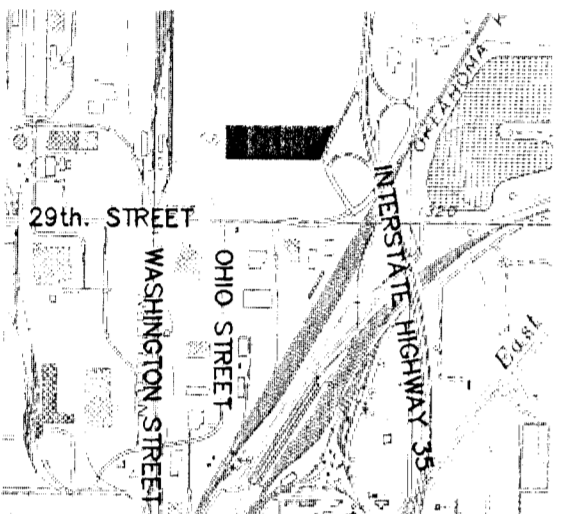


SCALE: 1" = 2,000'

FLOOD ZONE:
Subject property is in Zone C, as shown on Federal Emergency Management Agency (FEMA) Flood Insurance Rate Map (FIRM) for Sedgwick County, Kansas, Community Panel Number 200321.175A, effective June 3, 1986.

QUADRANGLE MAP

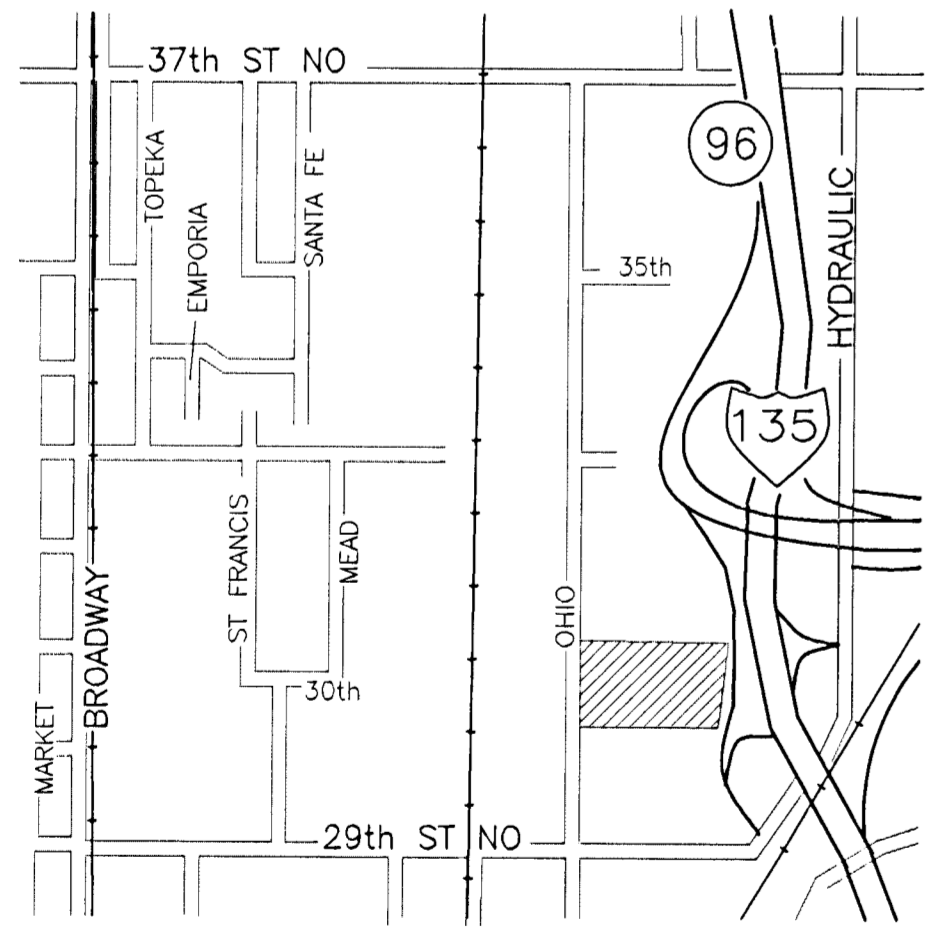
Scale: 1" = 2,000'



WICHITA EAST QUADRANGLE

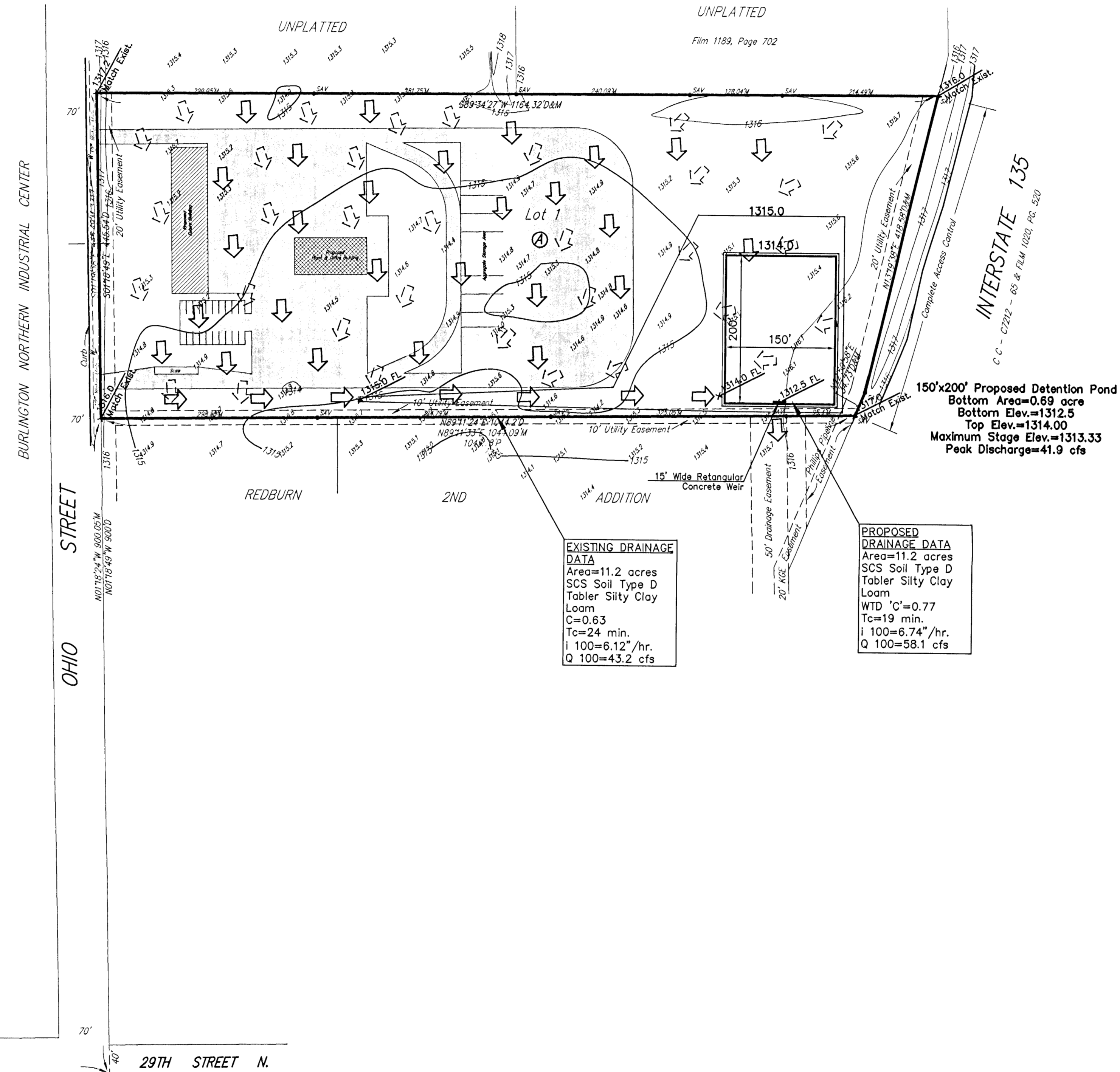
7.5 Minute Series

SCALE: 1" = 2,000'



Vicinity Map MOLITOR ADDITION

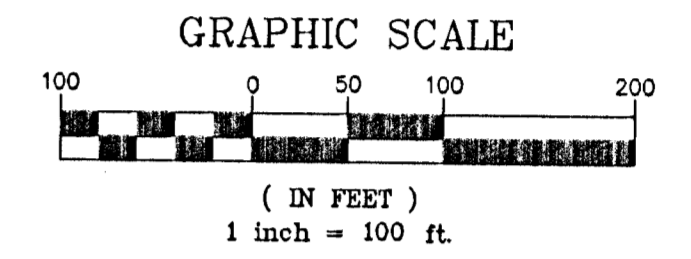
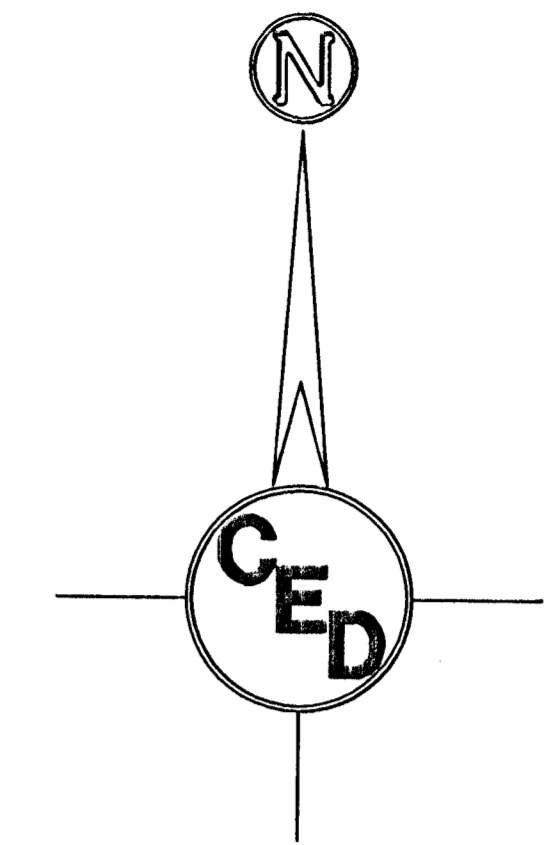
**DRAINAGE PLAN OF
'MOLITOR ADDITION'
SEDGWICK COUNTY, KANSAS
SOUTHEAST QUARTER OF SECTION 33,
TOWNSHIP 26 SOUTH, RANGE 1 EAST, OF THE 6TH P.M.**



EXISTING DRAINAGE DATA
Area=11.2 acres
SCS Soil Type D
Tobler Silty Clay Loam
C=0.63
Tc=24 min.
I 100=6.12"/hr.
Q 100=43.2 cfs

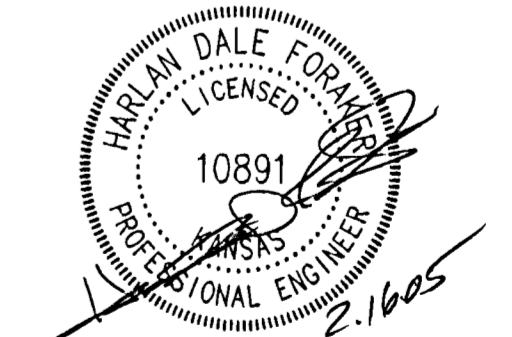
PROPOSED DRAINAGE DATA
Area=11.2 acres
SCS Soil Type D
Tobler Silty Clay Loam
WTD 'C'=0.77
Tc=19 min.
I 100=6.74"/hr.
Q 100=58.1 cfs

150'x200' Proposed Detention Pond
Bottom Area=0.69 acre
Bottom Elev.=1312.5
Top Elev.=1314.00
Maximum Stage Elev.=1313.33
Peak Discharge=41.9 cfs



- DRAINAGE KEY**
- = EXISTING FLOW DIRECTION
 - = EXISTING FLOW DIRECTION
 - = EXISTING CONTOURS
 - = FLOODWAY RESERVE
 - = EXISTING AND/OR PROPOSED ELEVATIONS

OWNER:
Molitor L.L.C.
Peter J. Molitor, Manager
430 W. 2nd St.
Andale, Kansas 67001
Ph. 444-2264



Savoy Company, P.A.
Land Surveyors
535 S. Emporia, Suite 104, Wichita, KS 67202
PH (316) 265-0005
FAX (316) 265-0275
www.savoyco.com

SURVEY DISCLAIMER:
TOPOGRAPHIC SURVEY AND CONTOUR MAP USED IN PREPARING PLANS WAS PROVIDED BY SAVOY COMPANY, P.A., 535 S. EMPORIA, SUITE 104, WICHITA, KS. ENGINEER DOES NOT GUARANTEE SURVEY ELEVATIONS FOR ACCURACY. CONTRACTOR SHALL VERIFY ELEVATIONS AND NOTIFY ENGINEER OF ANY DISCREPANCIES.

DRAINAGE PLAN FOR
MOLITOR ADDITION
SEDGWICK COUNTY, KANSAS
PROJ. NO.: 20051245

CERTIFIED ENGINEERING DESIGN, P.A.
810 WEST DOUGLAS, SUITE C
WICHITA, KANSAS 67203
PH.(316)262-8808 FAX.(316)262-1669

DESIGNED: HDF	SCALE: 1"=100'	SHEET 1
DRAWN: BAP	DATE: 2/05	TOTAL 1
CHECKED: HDF	CED FILE: Molitor_Base.dwg	