

2-13-08

McPEAK ADDITION
WICHITA, SEDGWICK COUNTY, KANSAS

State of Kansas)
Sedgwick County) SS

We, Savoy Company, P.A., Surveyors in aforesaid county and state do hereby certify that, under the supervision of the undersigned, we have surveyed and platted "McPEAK ADDITION", Wichita, Sedgwick County, Kansas and that the accompanying plat is a true and correct exhibit of the property surveyed, described as:

A tract in the SW1/4 of Section 21, Twp. 27-S, R-1-W of the 6th P.M., Sedgwick County, Kansas, described as follows: Beginning 2475 feet north of the S.E. Corner of the E. 1/2 of said SW1/4; thence west 640 feet; thence north 165 feet more or less to the north line of said SW1/4; thence east, along the north line of said SW1/4, 640 feet to the N.E. Corner thereof; thence south, along the east line of said SW1/4, 165 feet more or less to the point of beginning.

All Public easements and dedications being vacated by virtue of K.S.A. 12-512(b).

Savoy Company, P.A.

Date 28 Dec 07

Mark A. Savoy RLS #788
Surveyor

This plat of "McPEAK ADDITION", Wichita, Sedgwick County, Kansas, has been submitted to and approved by the Wichita-Sedgwick County Metropolitan Area Planning Commission, Wichita, Kansas.

Dated this ___ day of ___, 2007.

Wichita-Sedgwick County Metropolitan Area Planning Commission

Darrell A. Downing Chairman

John L. Schiegel Secretary

This plat approved and all dedications shown hereon, accepted by the City Council of the City of Wichita, Kansas, this ___ day of ___, 2008.

Carl Brewer Mayor

Karen Sublett City Clerk

Reviewed in accordance with K.S.A. 58-2005 on this ___ day of ___, 2008.

Tricia L. Robello, LS #1246
Deputy County Surveyor
Sedgwick County Kansas

Craig A. McPeak

Rebecca J. McPeak

State of Kansas)
Sedgwick County) SS

The foregoing instrument acknowledged before me, this 8th day of February 2008, by Craig A. and Rebecca J. McPeak, husband and wife.

My App't. Exp. 11/08/09

Notary Public

We, the undersigned, holders of a mortgage on the above described property, do hereby consent to this plat of "McPEAK ADDITION", Sedgwick County, Kansas.

1999
DELAWARE
NOTARY PUBLIC

Jenny Browner
Assistant Secretary

State of Kansas)
Sedgwick County) SS

The foregoing instrument acknowledged before me, this 1st day of February 2008, by Jenny Browner, MERS of GMAC Mortgage, Mortgage Electronic Registration Systems, Inc. ("MERS")

My App't. Exp. 2-21-2010

Sara M. Lentz
Notary Public

Entered on transfer record this ___ day of ___, 2008.

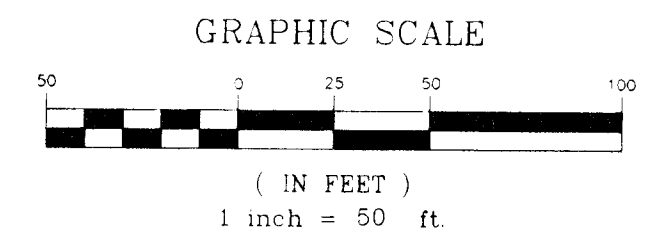
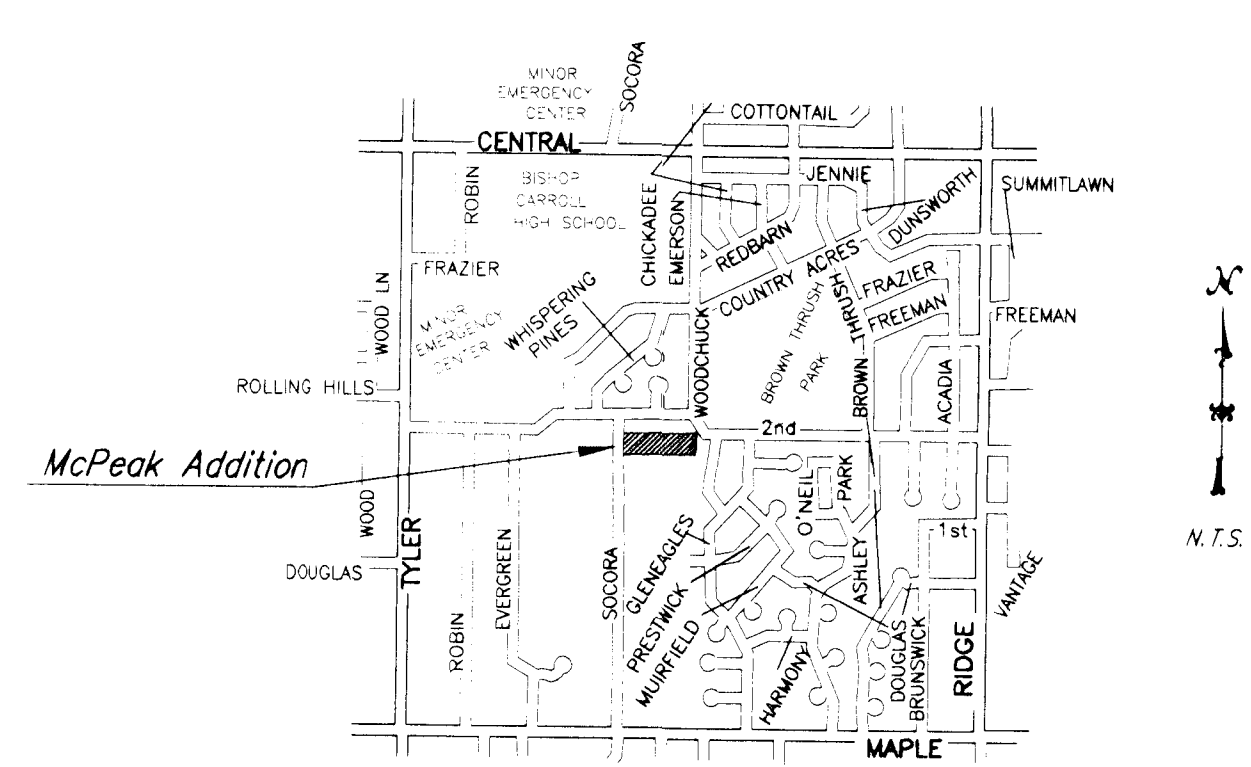
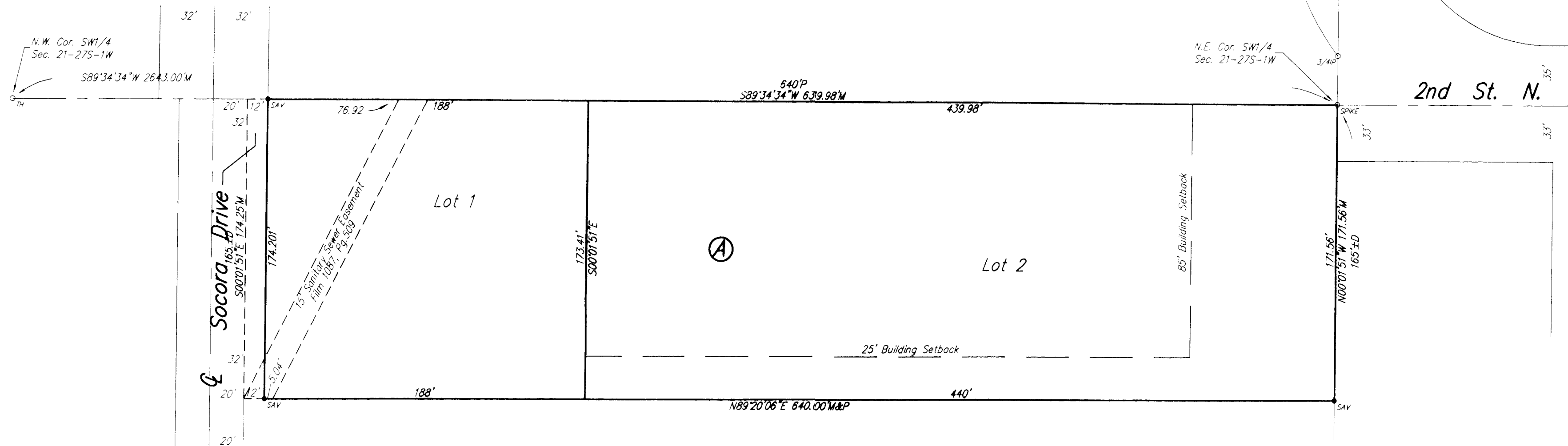
Don Brace County Clerk

State of Kansas)
Sedgwick County) SS

This is to certify that this plat has been filed for record in the office of the Register of Deeds, this ___ day of ___, 2008, at o'clock ___ M. and is duly recorded.

Bill Meek Register of Deeds

Tonya Buckingham Deputy



SARA M. LENTZ
COMMISSION NO. 745496
MY COMMISSION EXPIRES
FEBRUARY 21, 2010

