

# MCDONALD'S ADDITION

A Replat of Lots 101, 103, 105, 107, 109 and 111 on Hillside Avenue in Resurvey of Buck's 2nd Addition and the East Addition and Lots 1, 2, 3, 4, 5, 6 and 7 on Hillside Avenue in Schuckman's Addition and the East Addition and Lots 102, 104 and 106 on Lorraine Avenue in Resurvey of Buck's 2nd Addition all in the SE 1/4 of Section 15, T 27 S, R 1 E, City of Wichita, Sedgwick County, Kansas.

## DESCRIPTION:

All of Lots 101, 103, 105, 107, 109 and 111 on Hillside Avenue in Resurvey of Buck's 2nd Addition to Wichita, Sedgwick County, Kansas. AND, Lots 1, 2, 3, 4, 5, 6 and 7 on Hillside Avenue in Schuckman's Addition to Wichita, Sedgwick County, Kansas. AND, The East 26.25 feet of Lots 102, 104 and 106 on Lorraine Avenue in Resurvey of Buck's 2nd Addition to Wichita, Sedgwick County, Kansas. I, Richard L. Dayton, Kansas LS-972, do hereby certify that I have been in responsible charge of surveying and plating this "McDonald's Addition" an Addition to the City of Wichita, Sedgwick County, Kansas, and that the details of this plat are correct to the best of my knowledge and belief.

Richard L. Dayton, Kansas LS-972  
 Oark Civil Engineering, Inc.  
 1008 NW J Street, Suite C  
 Bentonville, AR 72712  
 DATE OF ADJ. STMENT: JUNE 1991  
 COMBINED SCALE FACTOR: 0.9997961 (AT CONTROL STATION)  
 479-464-8550

Know all men by these presents that we, the undersigned owners of the land as set forth hereon in the Land Surveyor's Certificate, have caused the same to be surveyed and platted into lots and blocks, the same to be known as Lot 1, Block B, "McDonald's Addition", an Addition to the City of Wichita, Sedgwick County, Kansas.

McDonald's Real Estate Company  
 State of \_\_\_\_\_  
 County of \_\_\_\_\_  
 This instrument was acknowledged before me on this \_\_\_\_\_ day of \_\_\_\_\_, 2010, by \_\_\_\_\_ Vice President  
 \_\_\_\_\_ My Commission expires \_\_\_\_\_

Reviewed in accordance with K.S.A. 58-2005 on this \_\_\_\_\_ day of \_\_\_\_\_, 2010.

Tricia L. Robello, LS-1246  
 Deputy County Surveyor  
 Sedgwick County, Kansas

This plat of "McDonald's Addition" has been submitted to and approved by the Wichita-Sedgwick County Metropolitan Planning Commission on this \_\_\_\_\_ day of \_\_\_\_\_, 2010.

By: \_\_\_\_\_ Darrell A. Downing, Chairman  
 \_\_\_\_\_ John L. Schigel, Secretary

This plat approved and all dedications shown hereon, if any, accepted by the City Council of the City of Wichita, Kansas, this \_\_\_\_\_ day of \_\_\_\_\_, 2010.  
 At the direction of the City Council:

\_\_\_\_\_ Carl Brewer, Mayor  
 \_\_\_\_\_ Karen Subler, City Clerk

Entered on the Transfer Record this \_\_\_\_\_ day of \_\_\_\_\_, 2010.

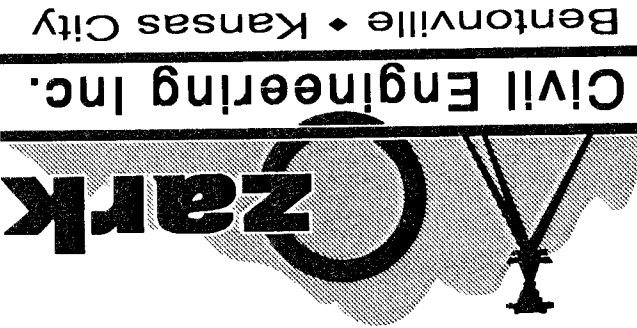
Kelly B. Arnold, County Clerk  
 Sedgwick County, Kansas

This is to certify that this instrument was filed for record in the office of the Register of Deeds, at \_\_\_\_\_ a.m. - p.m., \_\_\_\_\_ day of \_\_\_\_\_, 2010.

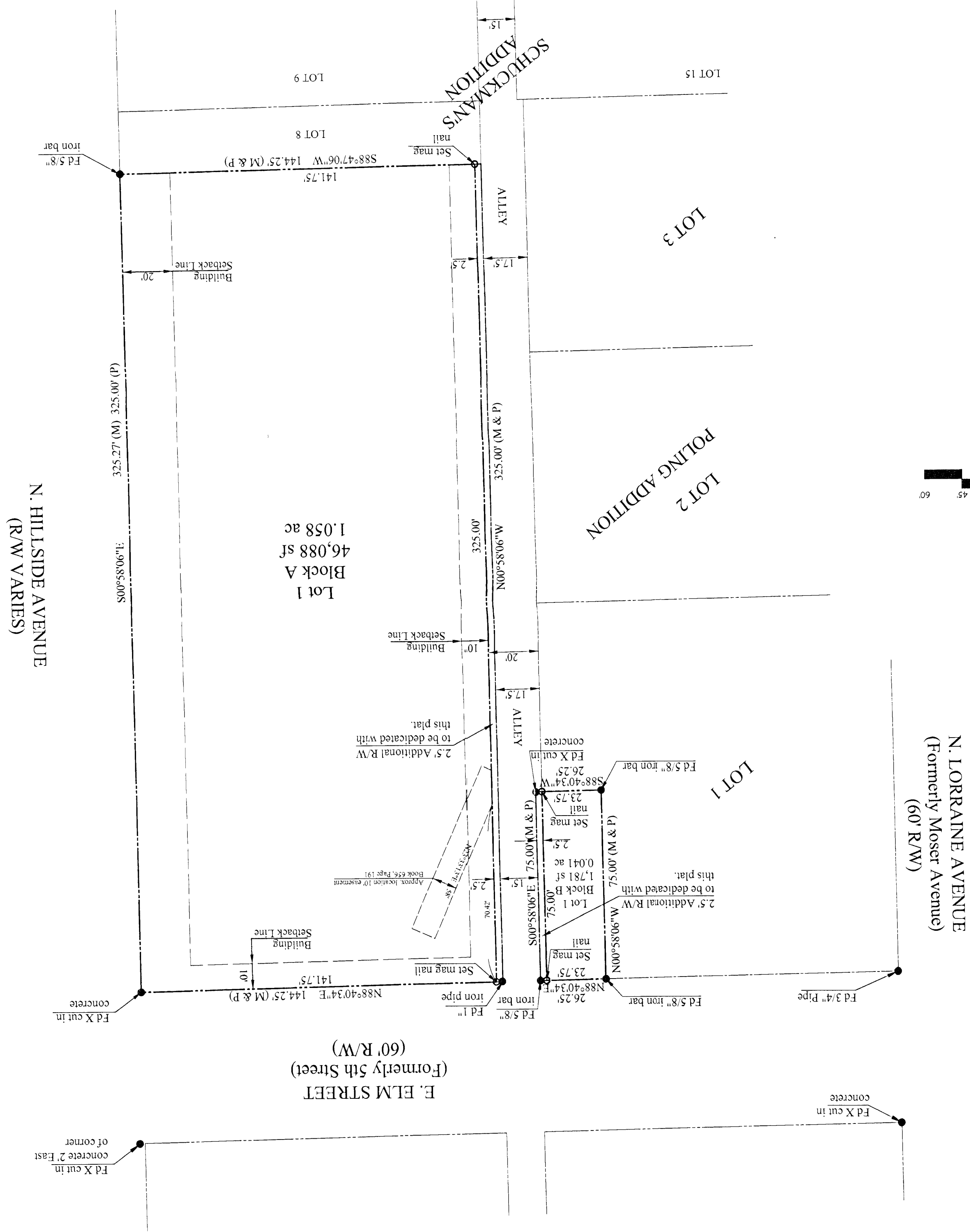
\_\_\_\_\_ William Meek, Register of Deeds

\_\_\_\_\_ Tonya Buckingham, Deputy

DATE OF FIELD SURVEY - JULY 13-14, 2009	SCALE: 1"=30'
DRAWN BY: RD	DATE: 4-7-10
FIELD CREW: INDIAN CREEK	DRAWING NO. S100201
CHECKED BY: RLD	SHEET 1 OF 1



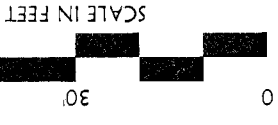
Bentonville • Kansas City



N. LORRAINE AVENUE  
 (Formerly Moser Avenue)  
 (60' R/W)

E. ELM STREET  
 (Formerly 5th Street)  
 (60' R/W)

N. HILLSIDE AVENUE  
 (R/W VARIES)



- LEGEND**
- Monument Set (as noted)
  - Monument Found (as noted)
  - (M) Measured Distance
  - (P) Plat Distance

VICINITY MAP  
 NOT TO SCALE

