

PRELIMINARY PLAT MDI ADDITION SEDGWICK COUNTY, KANSAS

LEGAL DESCRIPTION:

Parcel #1
Lot 1, Block 1, Castor Addition, Sedgwick County, Kansas.

Parcel #2
Beginning at a point 60 feet south and 20 feet east of the N.W. Corner of the NW1/4 of Sec. 33, Twp. 27-S, R-4-W of the 6th P.M., Sedgwick County, Kansas; thence east, parallel with the north line of said Section, 200 feet; thence south, on a line 90° to the north line of said Section, 600 feet; thence west 252.3 feet more or less to a point 20 feet east of the west line of said NW1/4; thence north, parallel with the west line of said NW1/4, 600 feet more or less to the point of beginning, except that part platted as Castor Addition, Sedgwick County, Kansas.

Parcel #3
A tract beginning 390.04 feet east of the N.W. Corner of the NW1/4 of Sec. 33, Twp. 27-S, R-4-W of the 6th P.M., Sedgwick County, Kansas, said point being the N.E. Corner of Castor Addition, Sedgwick County, Kansas; thence south with a deflection angle to the right of 90°, 560 feet; thence west with a deflection to the right of 90°, 175 feet; thence south with a deflection angle to the left of 90°, 100 feet; thence east with a deflection angle to the right of 90°, 418 feet; thence north with a deflection to the left of 90°, 660 feet to the north line of said NW1/4; thence west, along the north line of said NW1/4, 243 feet to the point of beginning, except the north 60 feet thereof for road right-of-way.

OWNER:
Manufacturing Development Inc.
37515 W. 15th St. S.
Cheney, Kansas 67025
Phone: 542-3166

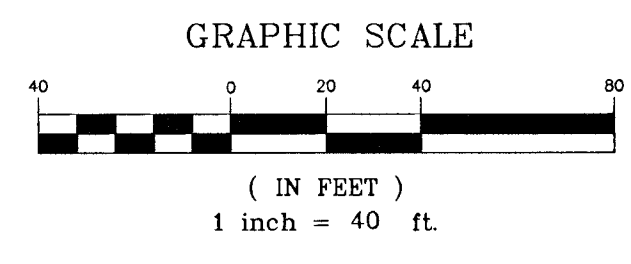
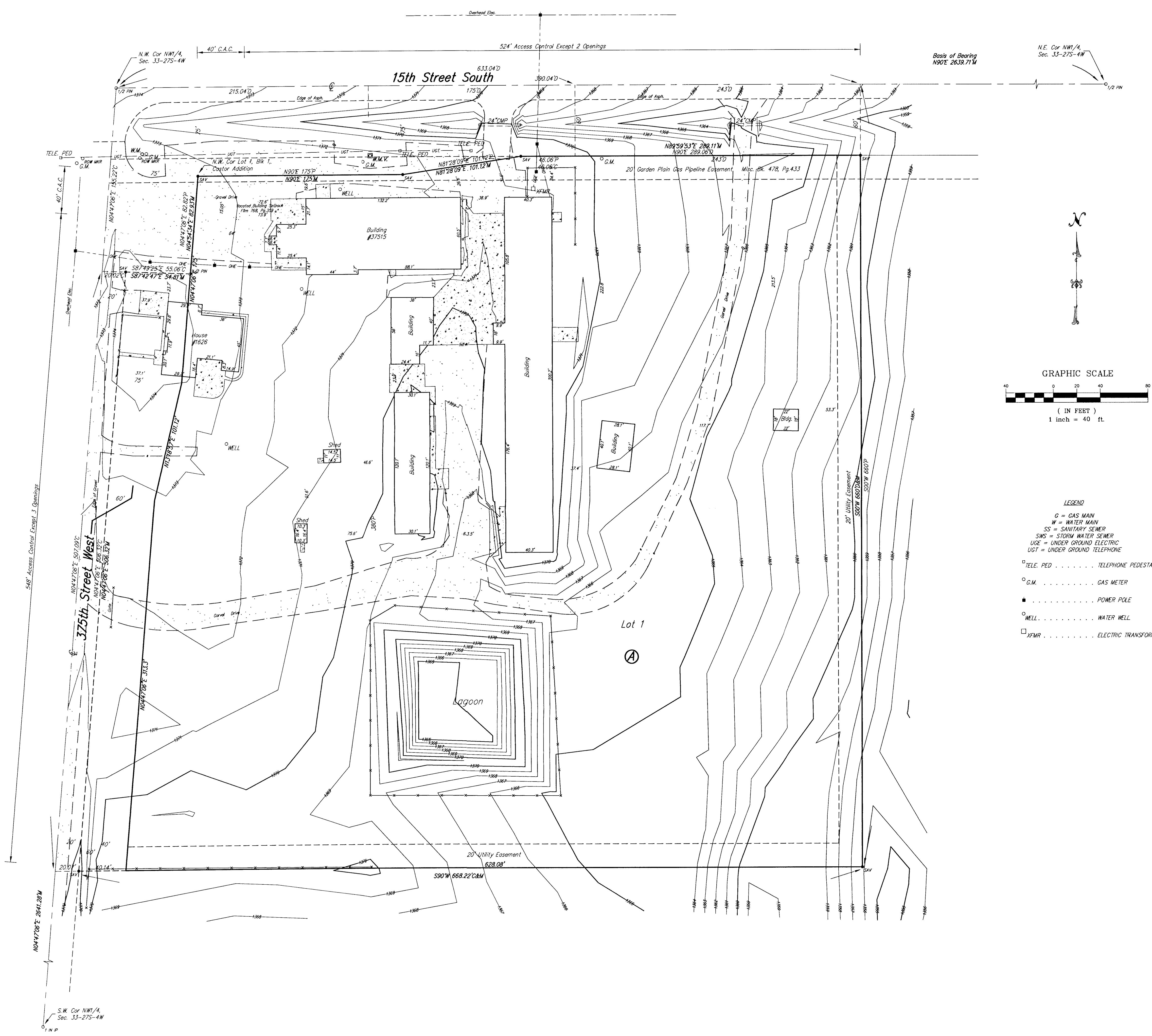
GROSS SIZE OF PLAT
377,172.25 Sq. Ft.
8.66 Acres

NET SIZE OF PLAT
354,822.22 Sq. Ft.
8.15 Acres

MINIMUM LOT SIZE
354,822.22 Sq. Ft.

ZONING
LI - Limited Industrial Net Size 100,712.53 Sq. Ft. 2.31 Acres
RR - Rural Residential Gross Size 276,459.72 Sq. Ft. 6.35 Acres
Proposed Zone Change to LI Limited Industrial

CONTROL NUMBER
261917
261787
347109



- LEGEND**
- G = GAS MAIN
 - W = WATER MAIN
 - SS = SANITARY SEWER
 - SWS = STORM WATER SEWER
 - UGE = UNDER GROUND ELECTRIC
 - UTG = UNDER GROUND TELEPHONE
 - TELE. PED TELEPHONE PEDESTAL
 - G.M. GAS METER
 - POWER POLE
 - WATER WELL
 - TFR ELECTRIC TRANSFORMER