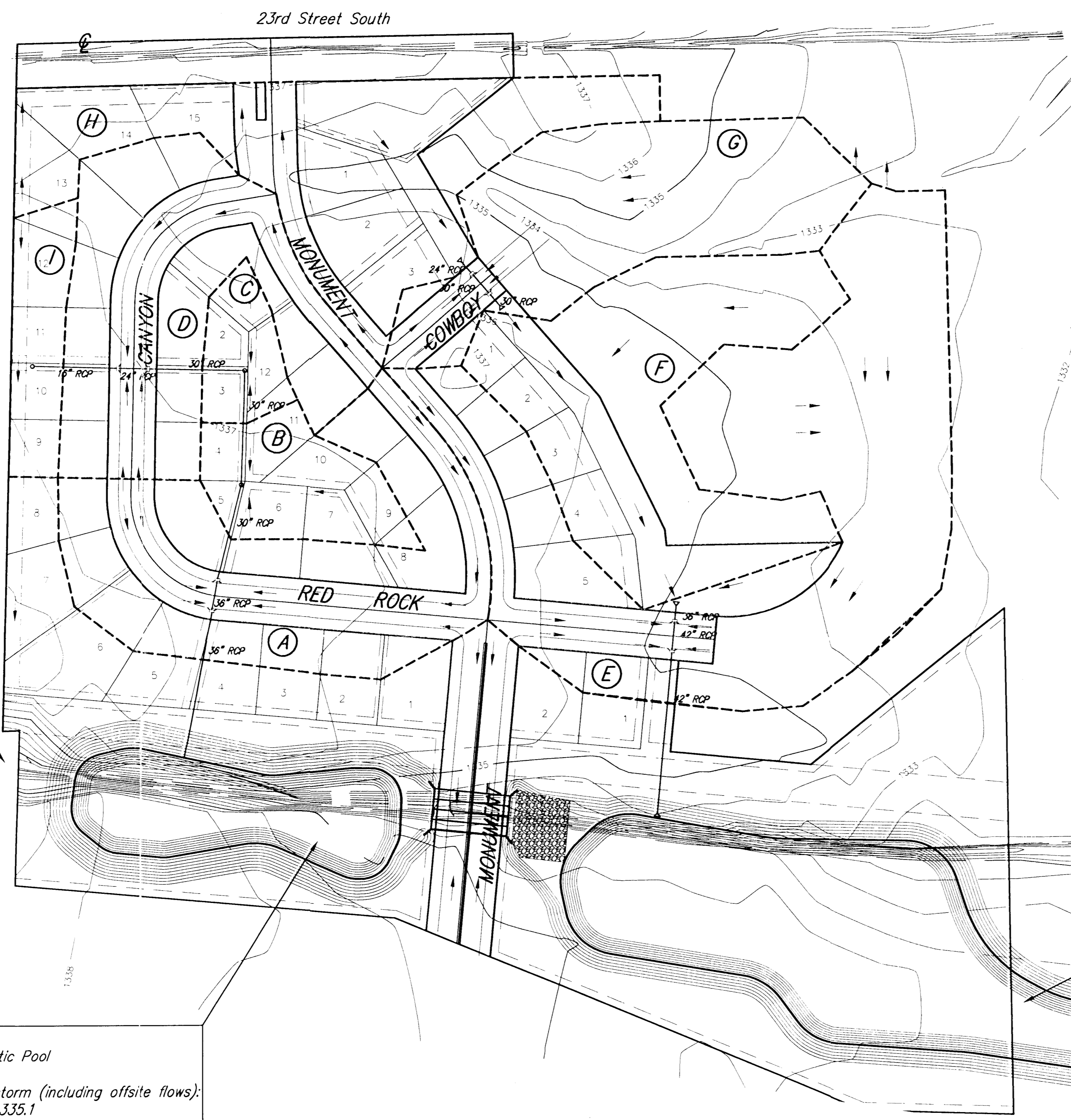


# DRAINAGE PLAN SOUTHWEST PASSAGE ADDITION Wichita, Sedgwick County, Kansas



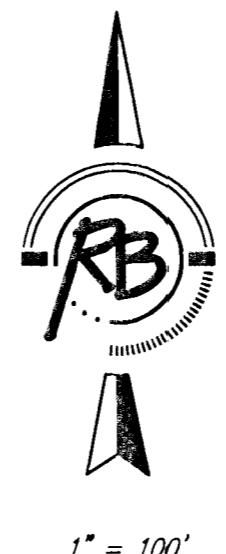
BENCH MARK: CHISELED "+" ON WEST HUBGUARD OF R.C.B.C., 125' S. OF N.E. CORNER SECTION 1-T285-R2W. ELEV = 1337.94 M.S.L.

ON-SITE BENCH MARK: TOP OF RUGGLES & BOHM BRASS DISK SET IN CONCRETE 1112' W. & 50' S. OF THE NE CORNER, NW1/4, SECTION 1-T285-R2W. ELEV = 1337.84 M.S.L.

SWS BASIN INFORMATION

| BASIN | ACRES | C <sub>2</sub> | C <sub>100</sub> | I <sub>2</sub> | I <sub>100</sub> | Q <sub>2</sub> cfs | Q <sub>100</sub> cfs |
|-------|-------|----------------|------------------|----------------|------------------|--------------------|----------------------|
| A     | 2.82  | 0.46           | 0.7              | 3.73           | 7.37             | 4.8                | 14.5                 |
| B     | 0.82  | 0.46           | 0.7              | 3.73           | 7.37             | 1.4                | 4.2                  |
| C     | 0.43  | 0.46           | 0.7              | 3.73           | 7.37             | 0.7                | 2.2                  |
| D     | 2.57  | 0.46           | 0.7              | 3.73           | 7.37             | 4.4                | 13.3                 |
| E     | 5.19  | 0.46           | 0.7              | 3.73           | 7.37             | 8.9                | 26.8                 |
| F     | 2.89  | 0.46           | 0.7              | 3.73           | 7.37             | 5.0                | 14.9                 |
| G     | 2.50  | 0.46           | 0.7              | 3.73           | 7.37             | 4.3                | 12.9                 |
| H     | 3.03  | 0.46           | 0.7              | 3.73           | 7.37             | 5.2                | 15.6                 |
| I     | 0.59  | 0.46           | 0.7              | 3.73           | 7.37             | 1.0                | 3.0                  |

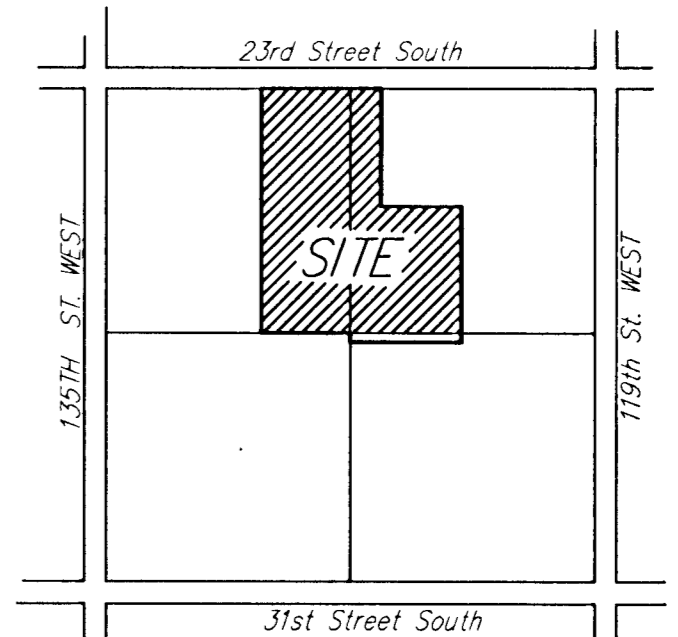
Tc of 15 minutes used for basin calculations



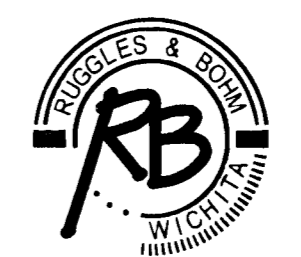
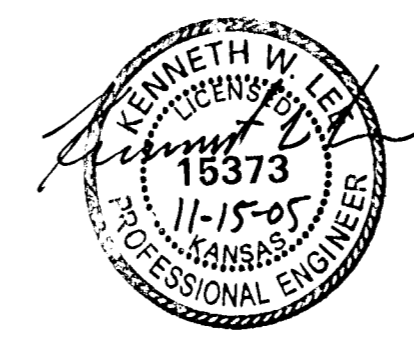
North Offsite Basin  
Area = 3.62 sq. miles  
SCS Lag = 225 minutes  
Q<sub>100</sub> In = 1964 cfs

Northeast Pond  
Area = 3.46 Ac @ Static Pool  
Static = 1326.22  
For 100 year overall storm (including offsite flows):  
100 Water Surface = 1332.9  
Q<sub>100</sub> In = 1975 cfs  
Q<sub>100</sub> Out = 1973.3 cfs

Northwest Pond  
Area = 1.17 Ac @ Static Pool  
Static = 1328.00  
For 100 year overall storm (including offsite flows):  
100 Water Surface = 1335.1  
Q<sub>100</sub> In = 1967 cfs  
Q<sub>100</sub> Out = 1966 cfs



VICINITY MAP



**Ruggles & Bohm, P.A.**  
Engineering, Surveying, Land Planning  
924 North Main  
Wichita, Kansas 67203  
www.rbkansas.com  
(316) 264-8008  
(316) 264-4621 fax  
E-mail: info@rbkansas.com