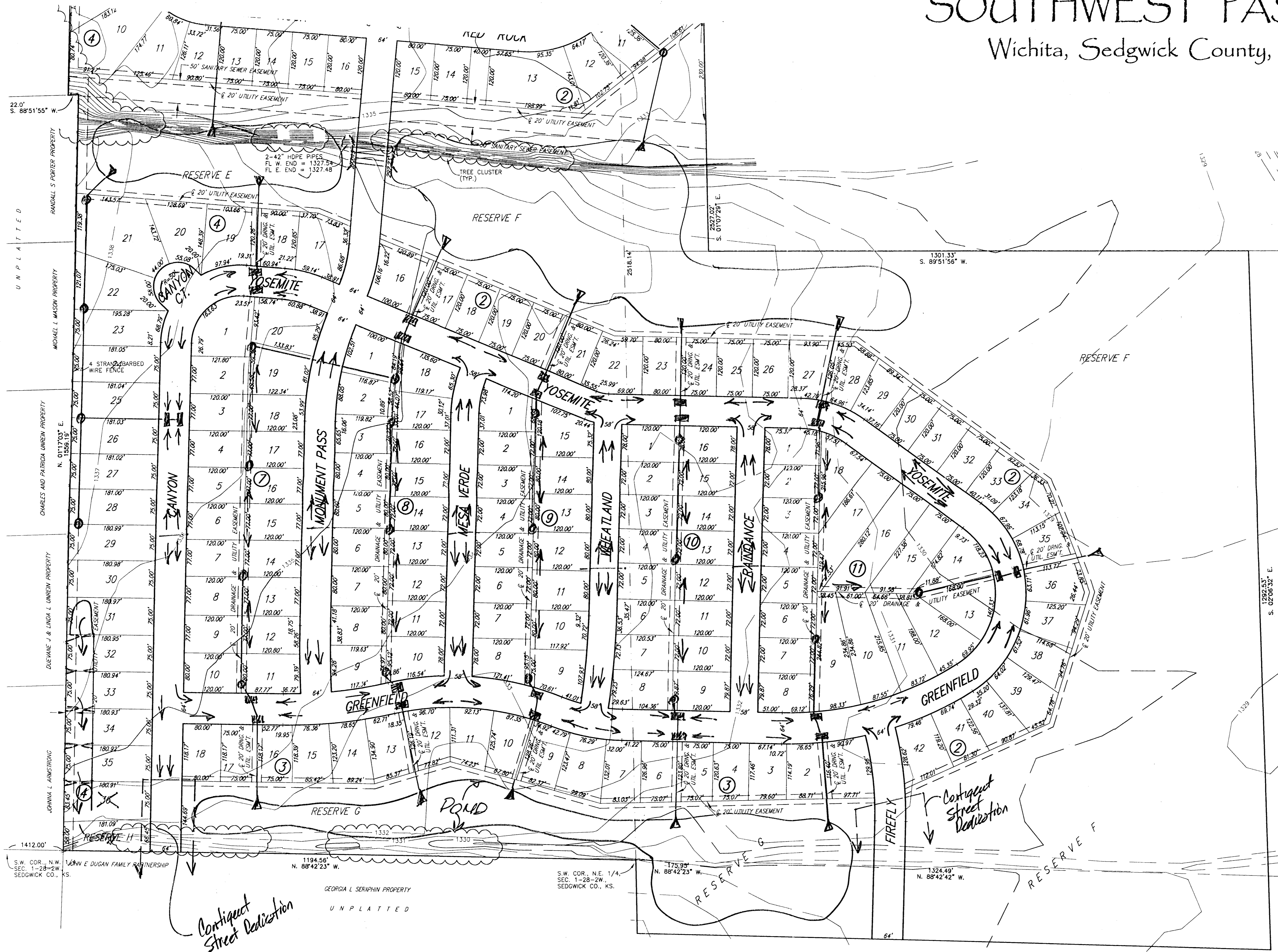


# Preliminary Plat

## SOUTHWEST PASSAGE

Wichita, Sedgwick County, Kansas



1" = 100'

LEGEND

- O—O—O— OVERHEAD ELECTRIC (SEDGWICK CO. ELECTRIC)
- UP UTILITY POLE
- BUILDING SETBACKS PER ZONING REGULATIONS
- BENCH MARK: CHISELED "A" ON WEST HUBGUARD OF R.C.B.C., 125' S. OF N.E. CORNER SECTION 1-28-2W. ELEV = 1337.94 M.S.L.
- BENCH MARK: TOP OF WEST END 24" CMP DRIVE CULVERT, 440' W. & 19' S. OF THE N.W. COR., N.E. 1/4, SECTION 1-28-2W. ELEV = 1337.05 M.S.L.

Bob Thompson  
FD 5/23/05

