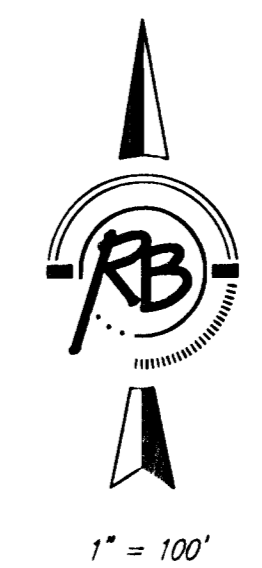
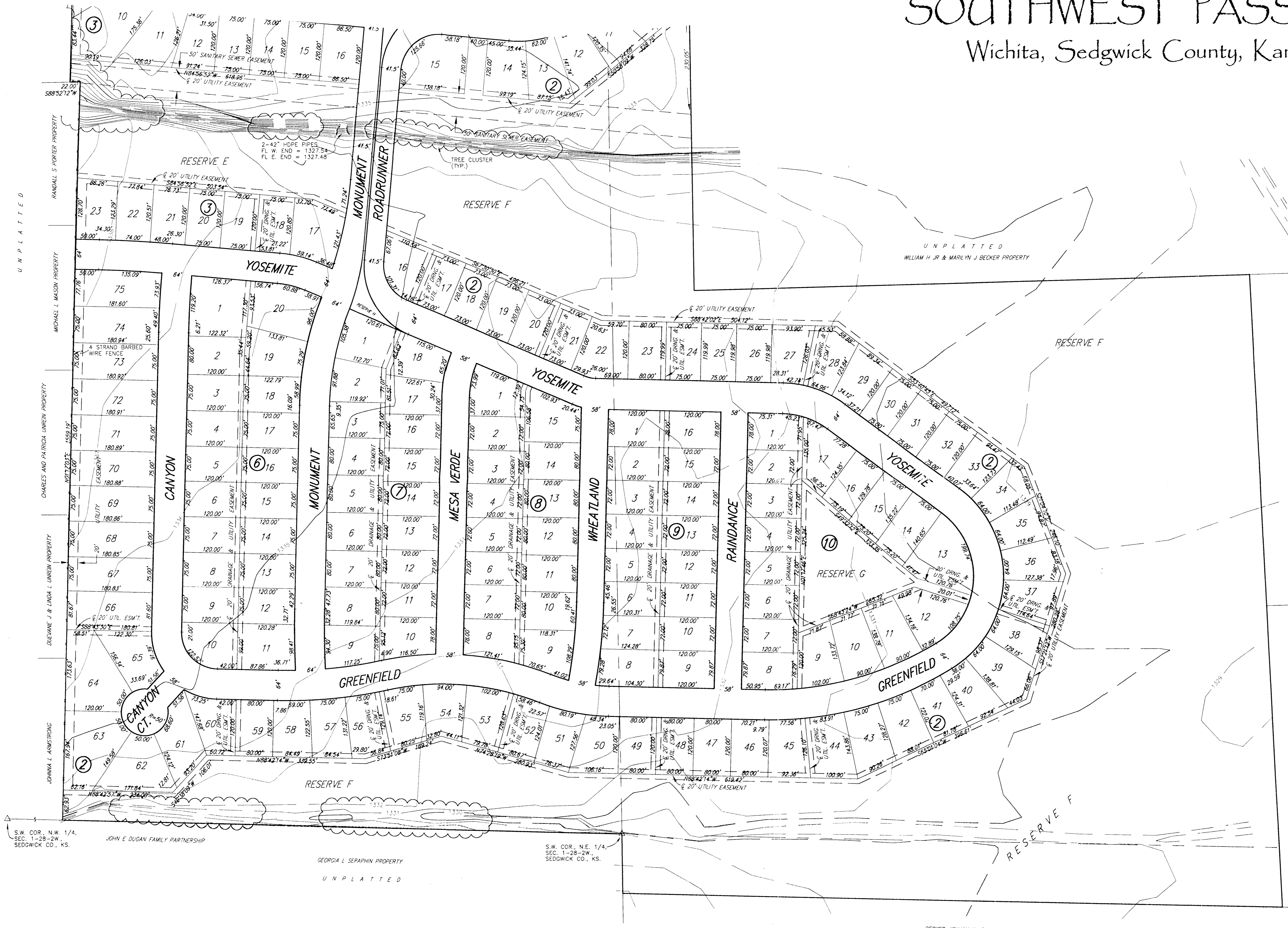


# Preliminary Plat

## SOUTHWEST PASSAGE

### Wichita, Sedgwick County, Kansas



- LEGEND**
- OHE . . . . . OVERHEAD ELECTRIC (SEDGWICK CO. ELECTRIC)
  - UP . . . . . UTILITY POLE
  - BUILDING SETBACKS PER ZONING REGULATIONS
  - BENCH MARK: CHISELED "A" ON WEST HUBGUARD OF R.C.B.C., 125' S. OF N.E. CORNER SECTION 1-28-2W. ELEV = 1337.04 M.S.L.
  - BENCH MARK: TOP OF WEST END 24" CMP DRIVE CULVERT, 440' W. & 19' S. OF THE N.W. COR. N.E. 1/4, SECTION 1-28-2W. ELEV = 1337.05 M.S.L.