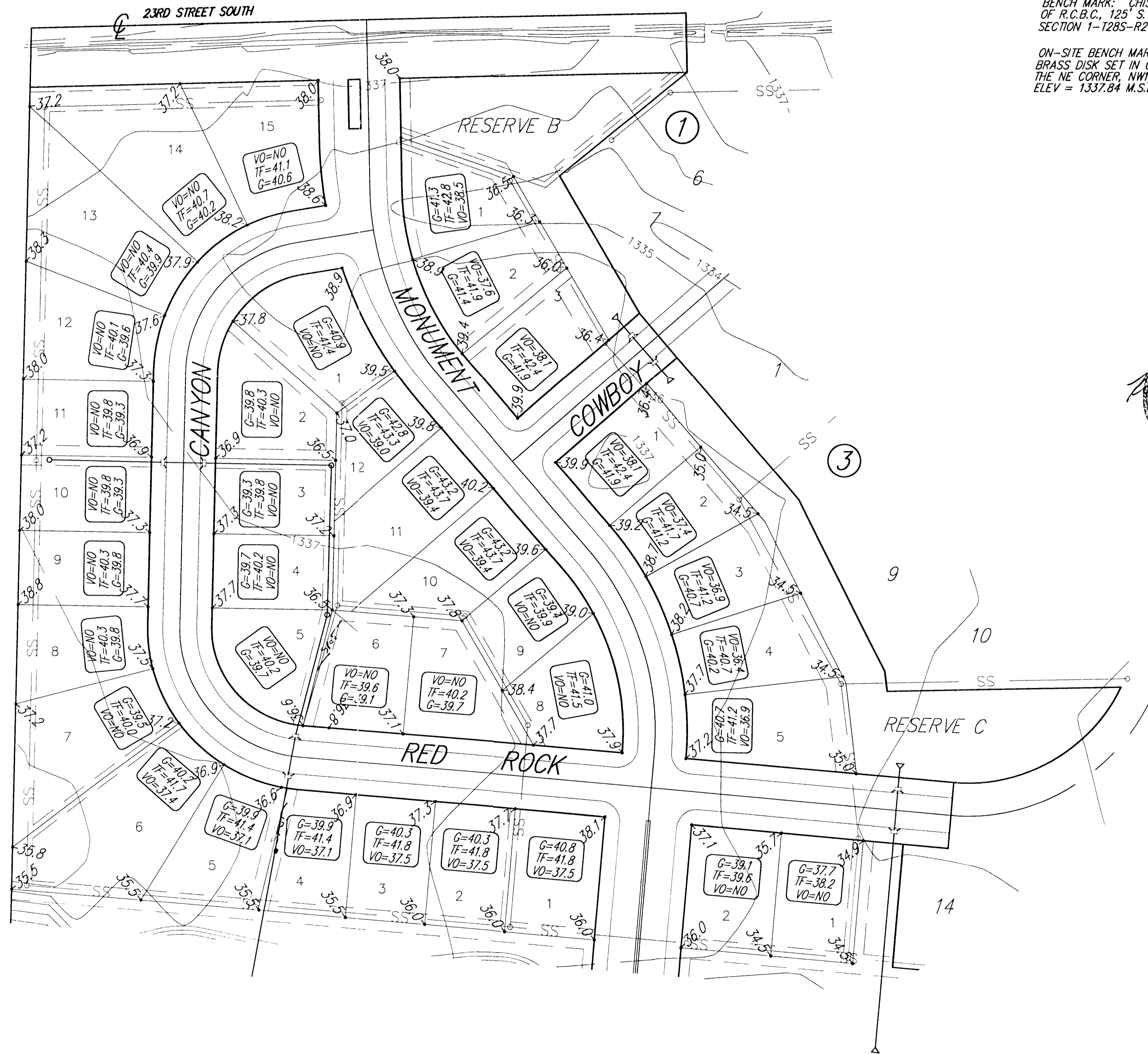


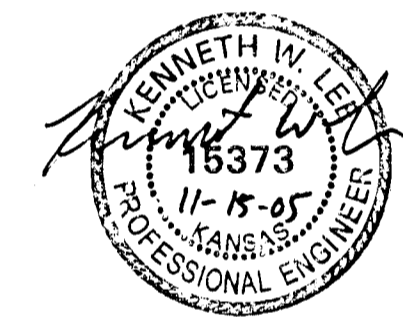
# SOUTHWEST PASSAGE ADDITION

Wichita, Sedgwick County, Kansas

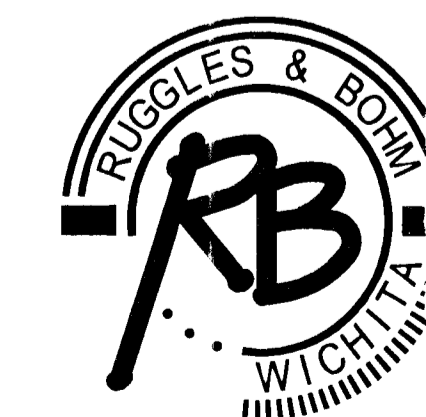
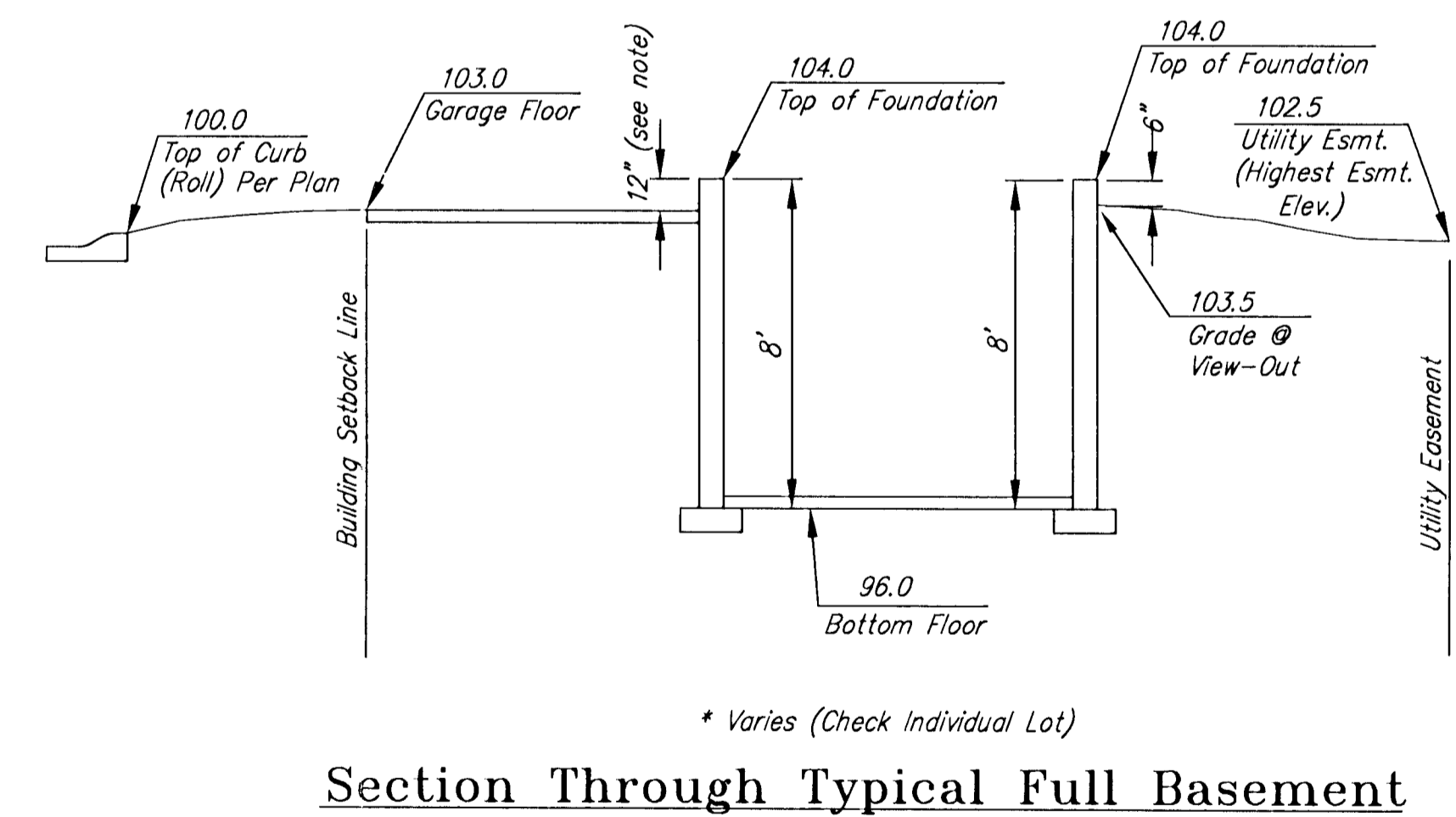
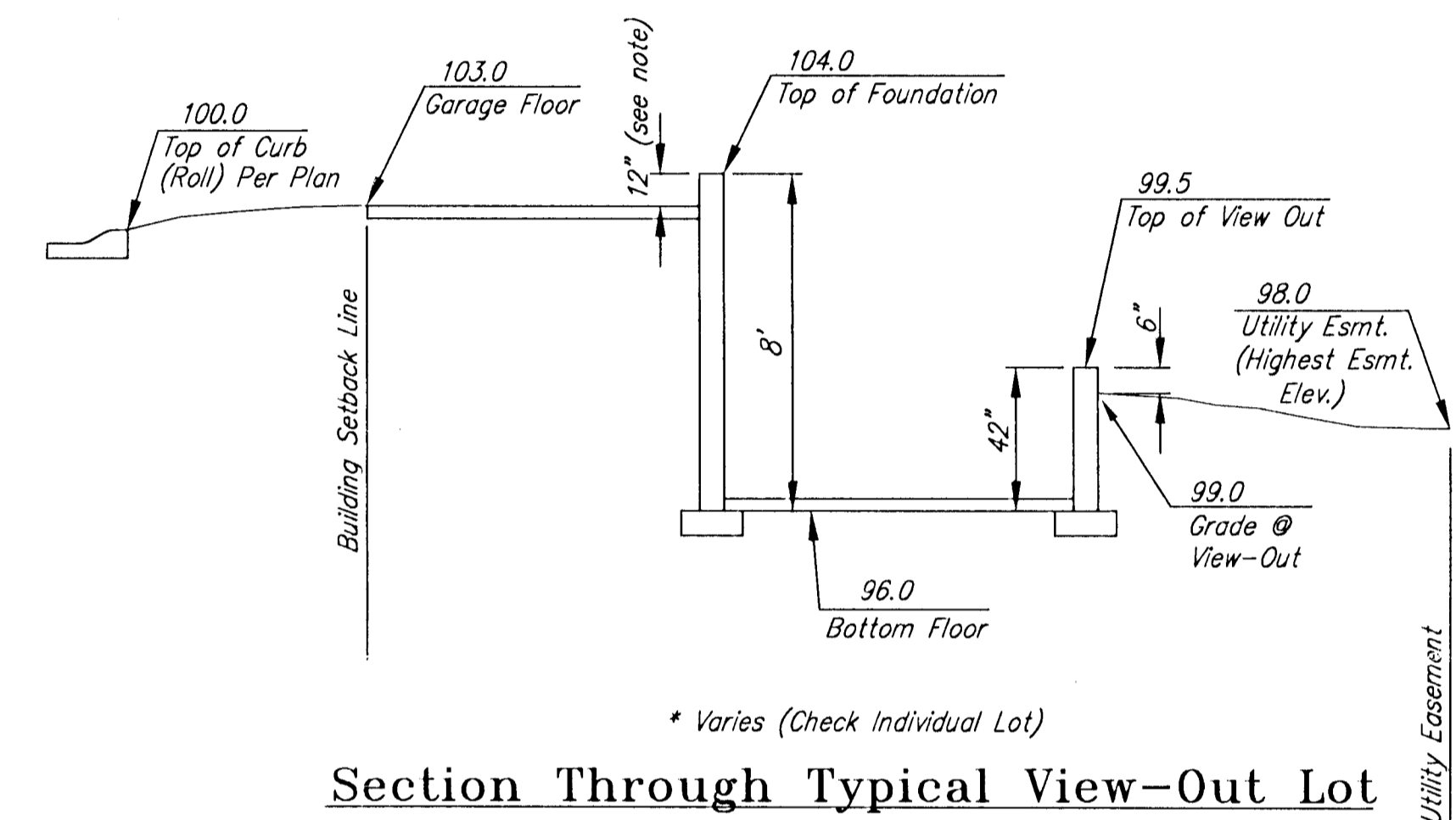
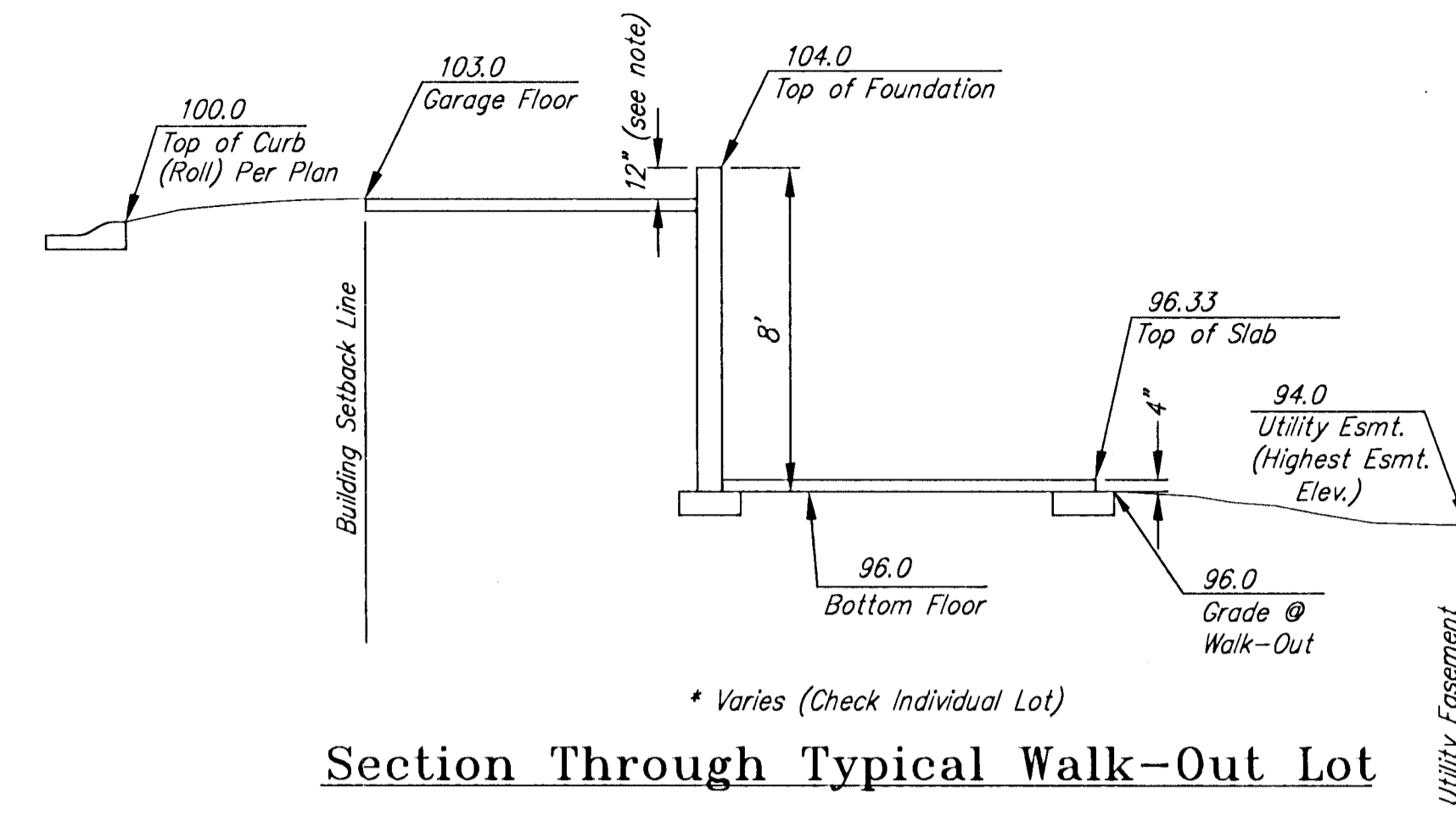


BENCH MARK: CHISELED "+" ON WEST HUBGUARD OF R.C.B.G., 125' S. OF N.E. CORNER SECTION 1-T28S-R2W. ELEV = 1337.94 M.S.L.

ON-SITE BENCH MARK: TOP OF RUGGLES & BOHM BRASS DISK SET IN CONCRETE 1112' W. & 50' S. OF THE NE CORNER, NW1/4, SECTION 1-T28S-R2W. ELEV = 1337.84 M.S.L.



1" = 60'



**Ruggles & Bohm, P.A.**  
Engineering, Surveying, Land Planning

924 North Main  
Wichita, Kansas 67203  
www.rbkansas.com

(316) 264-8008  
(316) 264-4621 fax  
E-mail: info@rbkansas.com