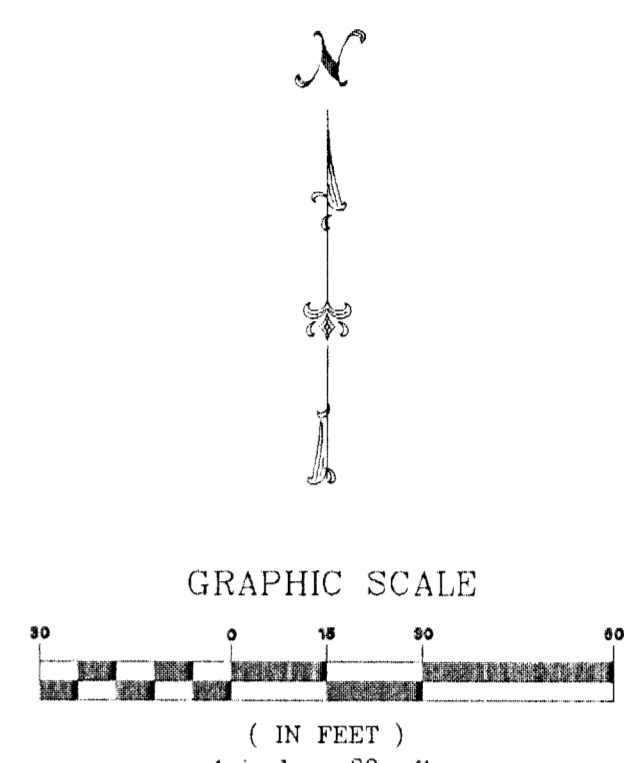


Drainage Plan SPANGLES ADDITION

WICHITA, SEDGWICK COUNTY, KANSAS

Legal Description:
The north 100 feet of the south 275 feet of the west 160 feet of Lot 17, except the west 10 feet there, dedicated for street, Block 4, Lyncrest Heights on Addition to Wichita, Sedgwick County, Kansas.



C.A.C. = Complete Access Control

LEGEND:

P = Platted
M = Measured

- 1/2" IP 1/2" IRON PIPE (FOUND)
 - BRN 1/2" REBAR W/BAUGHMAN CAP (FOUND)
 - SAV 1/2" REBAR W/SAVOY CAP (SET)
 - MAG/SAV WSH MAG NAIL W/SAVOY WASHER (SET)
 - CROSS CHISELED CROSS (FOUND)
 - VN CHISELED V-NOTCH (SET)
-
- LEGEND**
- G = GAS MAIN
 - W = WATER MAIN
 - SS = SANITARY SEWER
 - STW = STORM WATER SEWER
 - USE = UNDER GROUND ELECTRIC
 - UST = UNDER GROUND TELEPHONE
 - TELE PED TELEPHONE PEDESTAL
 - E.M. ELECTRIC METER
 - E.O. ELECTRIC OUTLET
 - CA CUY ANCHOR
 - G.M. GAS METER
 - G.P. GUARD POST
 - HL HIGH LINE POLE
 - M.W. MONITOR WELL
 - TEL TELEPHONE
 - PP POWER POLE
 - S SIGN
 - W.M. WATER METER
 - TR ELECTRIC TRANSFORMER
 - SS M.H. SANITARY SEWER MANHOLE

ONSITE DEVELOPED DRAINAGE DATA:
Area = 0.07 acre
SCS Soil Type D
Urban Land-Irwin Complex,
1% to 3% Slopes
C 5 = 0.87
C 100 = 0.89
Tc = 15 Min
I 5 = 4.62"/hr.
I 100 = 7.40"/hr.
Q 5 = 0.28 cfs
Q 100 = 0.46 cfs

5 year Return Period
Peak Undeveloped Discharge=1.08 cfs
After Parking Lot Detention(Holes in Lid)
Peak Developed Discharge=0.96 cfs
(1.08 cfs - 0.28(North Runoff) - 0.48(West Runoff) + 0.64(Taco Shop) = 0.96 cfs)
Max. Stage=1329.75
Contractor Shall Install Std. 4" Dia. SWS MH.
Proposed Top Elev.=1329.00
FL Elev. Out 15"(E)=1524.00
Contractor Shall Substitute Neenah R-2015 Lid & R-1713 Frame in Place of Standard Lid & Frame for this MH. Contractor Shall Knock out Slots in Lid as Specified in Detail on This Sheet.

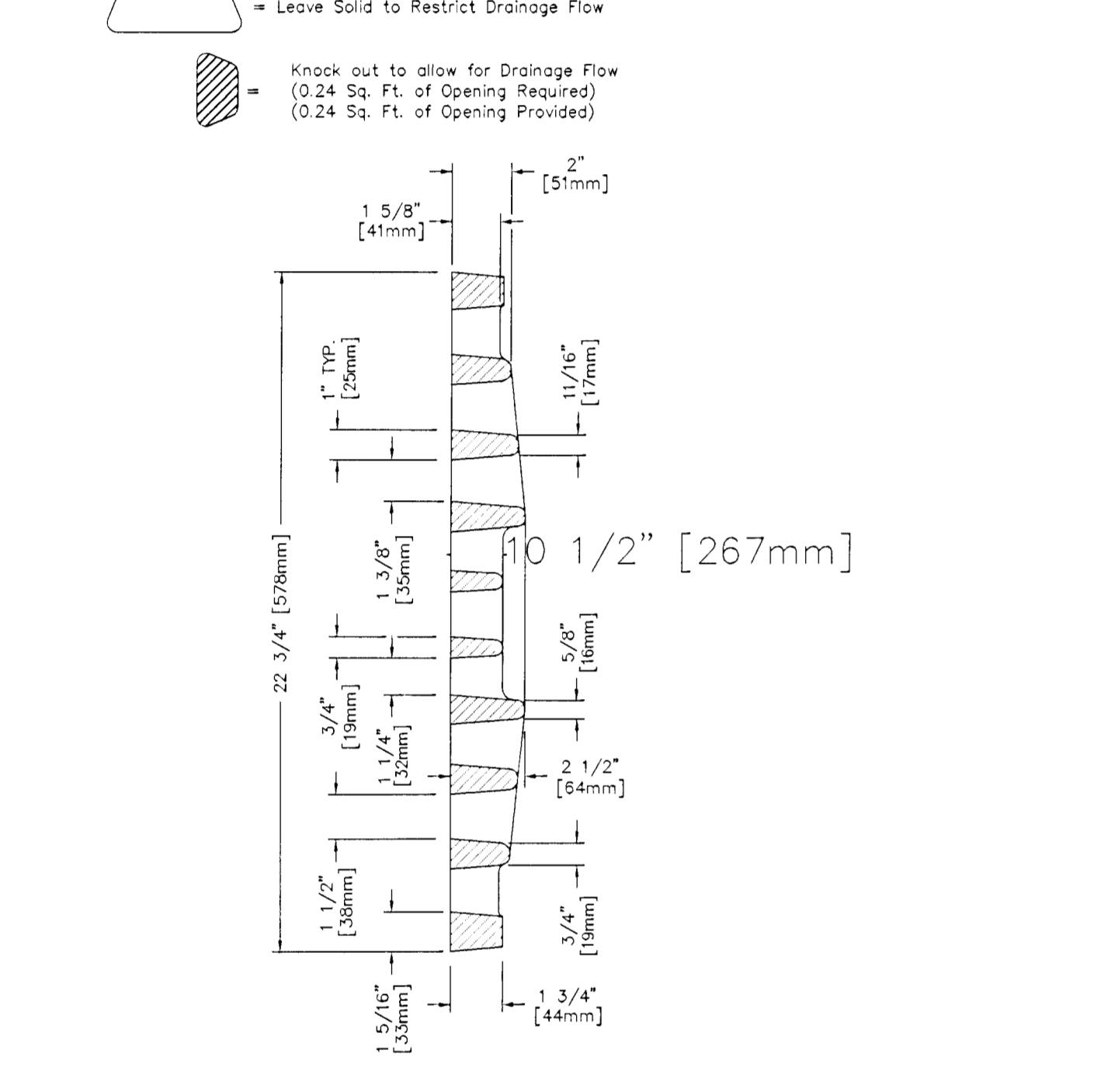
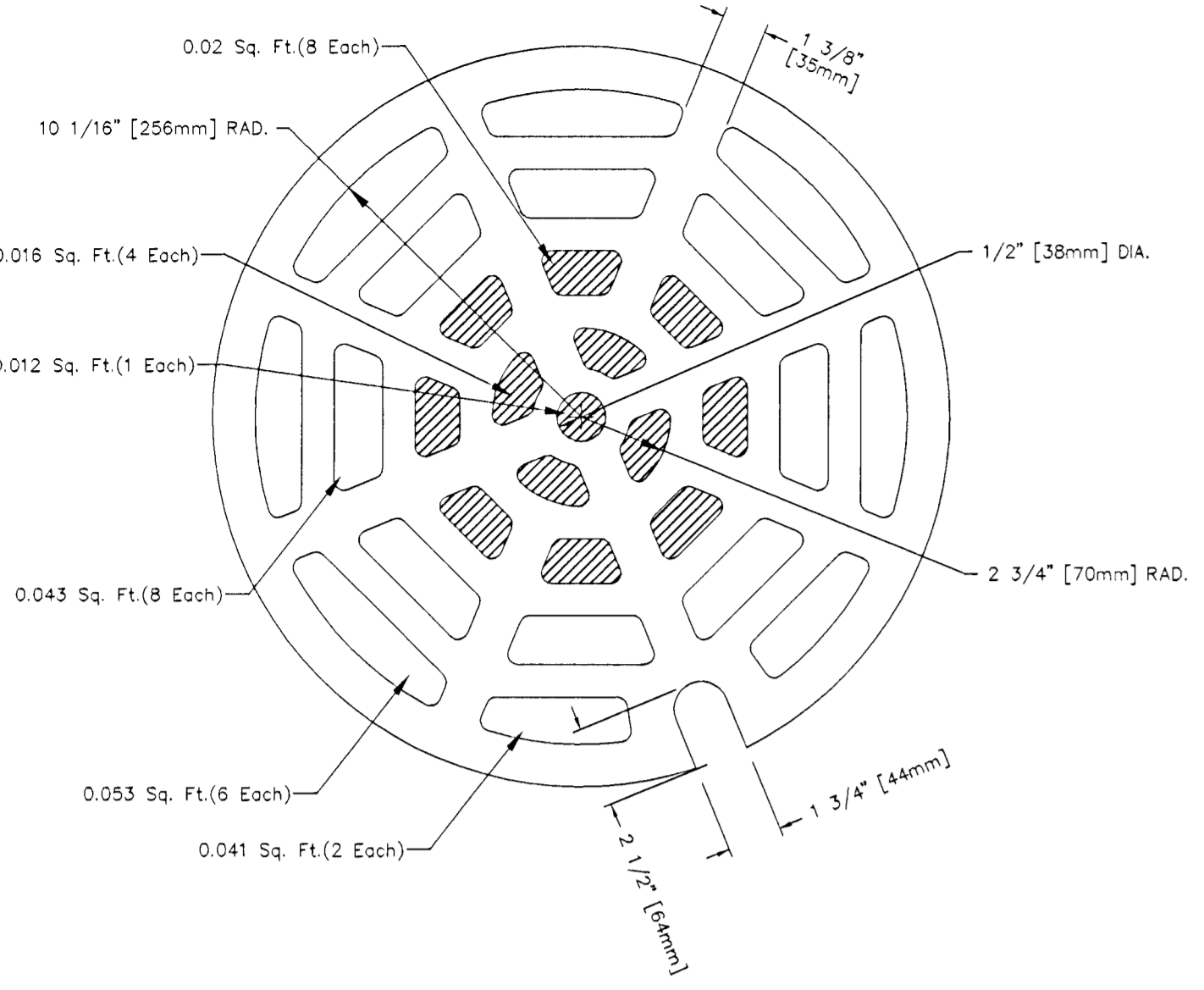
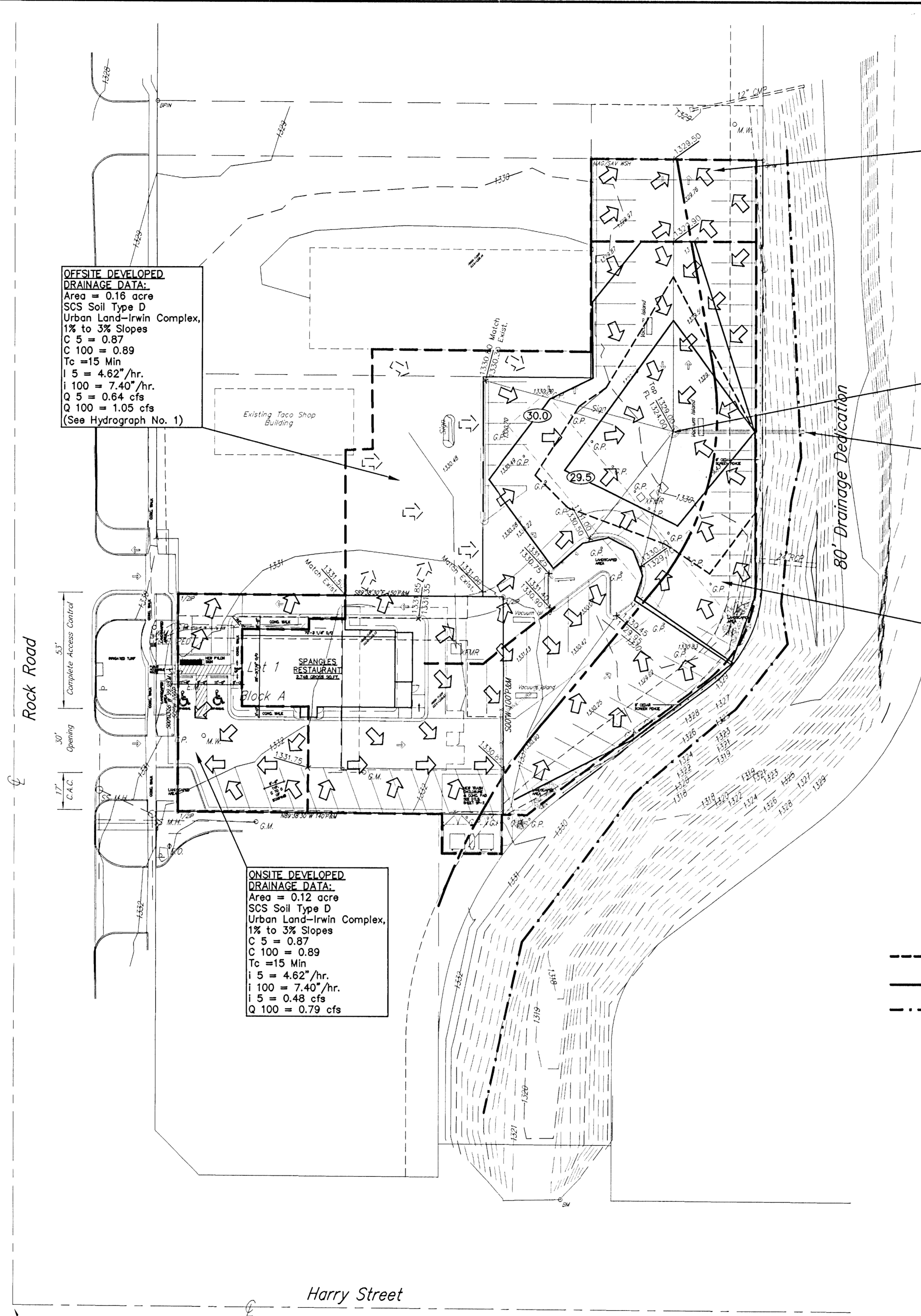
ONSITE DEVELOPED DRAINAGE DATA:
Area = 0.97 acre
SCS Soil Type D
Urban Land-Irwin Complex,
1% to 3% Slopes
C 5 = 0.87
C 100 = 0.89
Tc = 15 Min
I 5 = 4.62"/hr.
I 100 = 7.40"/hr.
Q 5 = 3.90 cfs
Q 100 = 6.39 cfs
(See Hydrograph No. 2)

ONSITE & OFFSITE DEVELOPED DRAINAGE DATA:
Area = 1.13 acre
SCS Soil Type D
Urban Land-Irwin Complex,
1% to 3% Slopes
C 5 = 0.87
C 100 = 0.89
Tc = 15 Min
I 5 = 4.62"/hr.
I 100 = 7.40"/hr.
Q 5 = 4.54 cfs
Q 100 = 7.44 cfs
(See Hydrograph No. 3)

ONSITE UNDEVELOPED DRAINAGE DATA:
Area = 1.0 acre
SCS Soil Type D
Urban Land-Irwin Complex,
1% to 3% Slopes
C 5 = 0.35
C 100 = 0.65
Tc = 34 Min.
I 5 = 3.09"/hr.
I 100 = 5.18"/hr.
Q 5 = 1.08 cfs
Q 100 = 3.37 cfs

ONSITE DEVELOPED DRAINAGE DATA:
Area = 0.12 acre
SCS Soil Type D
Urban Land-Irwin Complex,
1% to 3% Slopes
C 5 = 0.87
C 100 = 0.89
Tc = 15 Min
I 5 = 4.62"/hr.
I 100 = 7.40"/hr.
Q 5 = 0.48 cfs
Q 100 = 0.79 cfs

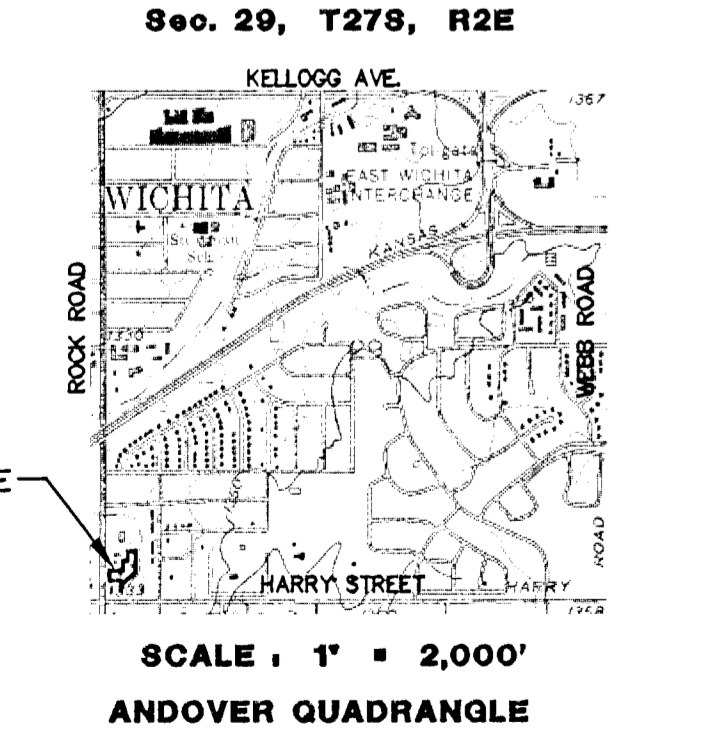
OFFSITE DEVELOPED DRAINAGE DATA:
Area = 0.16 acre
SCS Soil Type D
Urban Land-Irwin Complex,
1% to 3% Slopes
C 5 = 0.87
C 100 = 0.89
Tc = 15 Min
I 5 = 4.62"/hr.
I 100 = 7.40"/hr.
Q 5 = 0.64 cfs
Q 100 = 1.05 cfs
(See Hydrograph No. 1)



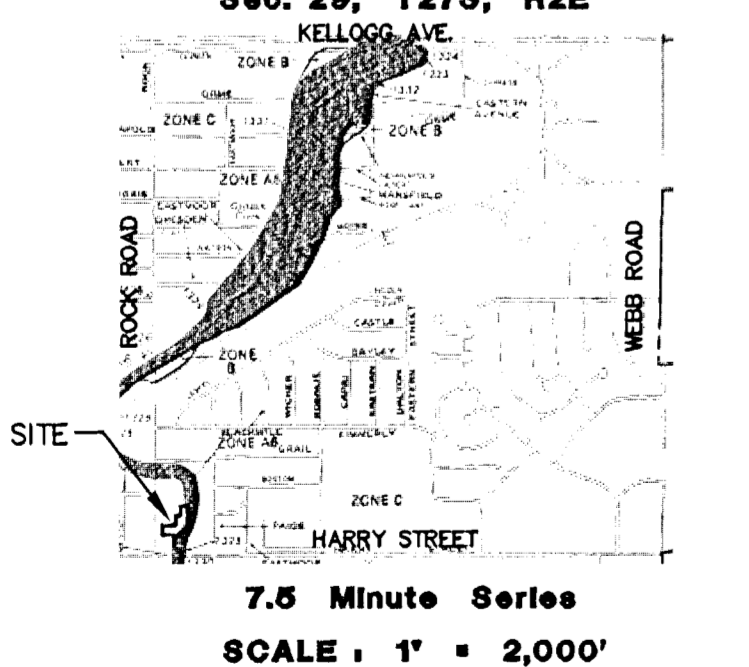
NOTE: ALL DIMENSIONS SHOWN ARE IN ENGLISH AND [METRIC]
MATERIAL: CAST DUCTILE IRON ASTM A536, 55 + KSI YIELD
FINISH: NO PAINT
WEIGHT: 138#

DR. 10891	SCALE 1/4" = 1'	TITLE R-2015 TYPE "D" GRATE
DATE 04-03-2000	NEENAH FOUNDRY COMPANY	NEENAH NF-20150030 B

QUADRANGLE MAP

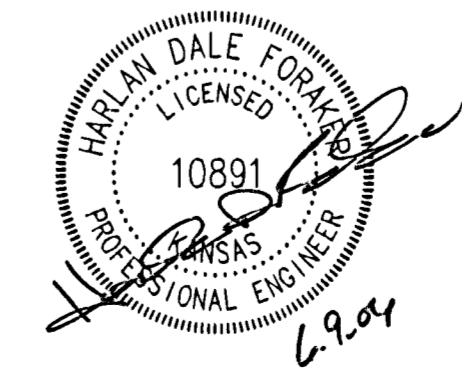


FLOOD ZONE MAP



FLOOD ZONE:
Subject property is in Zones A6 & B, as shown of Federal Emergency Management Agency (FEMA) Flood Insurance Rate Map (FIRM) for Wichita, Sedgwick County, Kansas, Panel Number 200328 0030 A, effective May 15, 1986.

Savoy Company, P.A. 316 (316) 263-0205
Land Surveyors FAX (316) 263-0275
535 S. Emporia, Suite 104, Wichita, KS 67202 www.savoyco.com



DRAINAGE PLAN PREPARED BY:
CERTIFIED ENGINEERING DESIGN, P.A.
810 WEST DOUGLAS, SUITE C WICHITA, KANSAS 67203
PH: (316) 262-8808
FAX: (316) 262-1669

OWNER:
Spangles, Inc.
437 N Hillside
Wichita, Kansas 67214
Ph 685-8817

MINIMUM LOT SIZE
14999.71 Sq. Ft.
0.34 Acres±

ZONING
LC - Limited Commercial

CONTROL NUMBER
177727

GROSS SIZE
14999.71 Sq. Ft.
0.34 Acres±

NET SIZE
14999.71 Sq. Ft.
0.34 Acres±

SHEET 1
TOTAL 1