

# SPANGLES ADDITION

FINAL TRACING REC'D

WICHITA, SEDGWICK COUNTY, KANSAS

8/29/06

State of Kansas) SS  
Sedgwick County)

We, Savoy Company, P.A., Surveyors in aforesaid county and state do hereby certify that, under the supervision of the undersigned, we have surveyed and platted "SPANGLES ADDITION", Wichita, Sedgwick County, Kansas and that the accompanying plat is a true and correct exhibit of the property surveyed, described as:

This plat of "SPANGLES ADDITION", Wichita, Sedgwick County, Kansas, has been submitted to and approved by the Wichita-Sedgwick County Metropolitan Area Planning Commission, Wichita, Kansas.

Dated this \_\_\_\_\_ day of \_\_\_\_\_, 2006.

Wichita-Sedgwick County Metropolitan Area Planning Commission

\_\_\_\_\_  
Chairman  
Harold L. Warner, Jr.

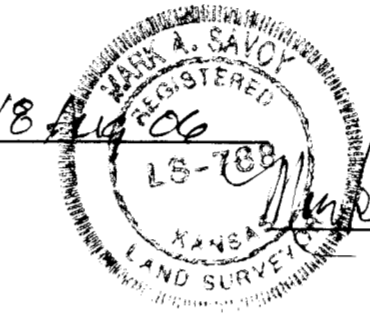
\_\_\_\_\_  
Secretary  
John L. Schiegel

The north 100 feet of the south 275 feet of the west 160 feet of Lot 17, except the west 10 feet there, dedicated for street, Block 4, Lynncrest Heights an Addition to Wichita, Sedgwick County, Kansas.

All Public easements and dedications being vacated by virtue of K.S.A. 12-512(b).

Savoy Company, P.A.

Date 18 Aug 2006



\_\_\_\_\_  
Surveyor  
Mark A. Savoy RLS #788

This plat approved and all dedications shown hereon, accepted by the City Council of the City of Wichita, Kansas, this \_\_\_\_\_ day of \_\_\_\_\_, 2006.

\_\_\_\_\_  
Mayor  
Carlos Mayans

\_\_\_\_\_  
City Clerk  
Karen Sublett

Reviewed in accordance with K.S.A. 58-2005 on this \_\_\_\_\_ day of \_\_\_\_\_, 2006.

\_\_\_\_\_  
Deputy County Surveyor  
Sedgwick County Kansas  
Tricia L. Robello, LS #1246

Spangles, Inc.

\_\_\_\_\_  
President  
Craig A. Steven

Entered on transfer record this \_\_\_\_\_ day of \_\_\_\_\_, 2006.

\_\_\_\_\_  
County Clerk  
Don Brace

State of Kansas) SS  
Sedgwick County)

The foregoing instrument acknowledged before me, this \_\_\_\_\_ day of \_\_\_\_\_, 2006, by Craig A. Steven, President of Spangles, Inc., on behalf of the corporation.

\_\_\_\_\_  
Notary Public

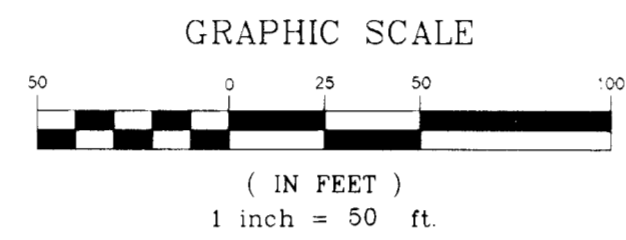
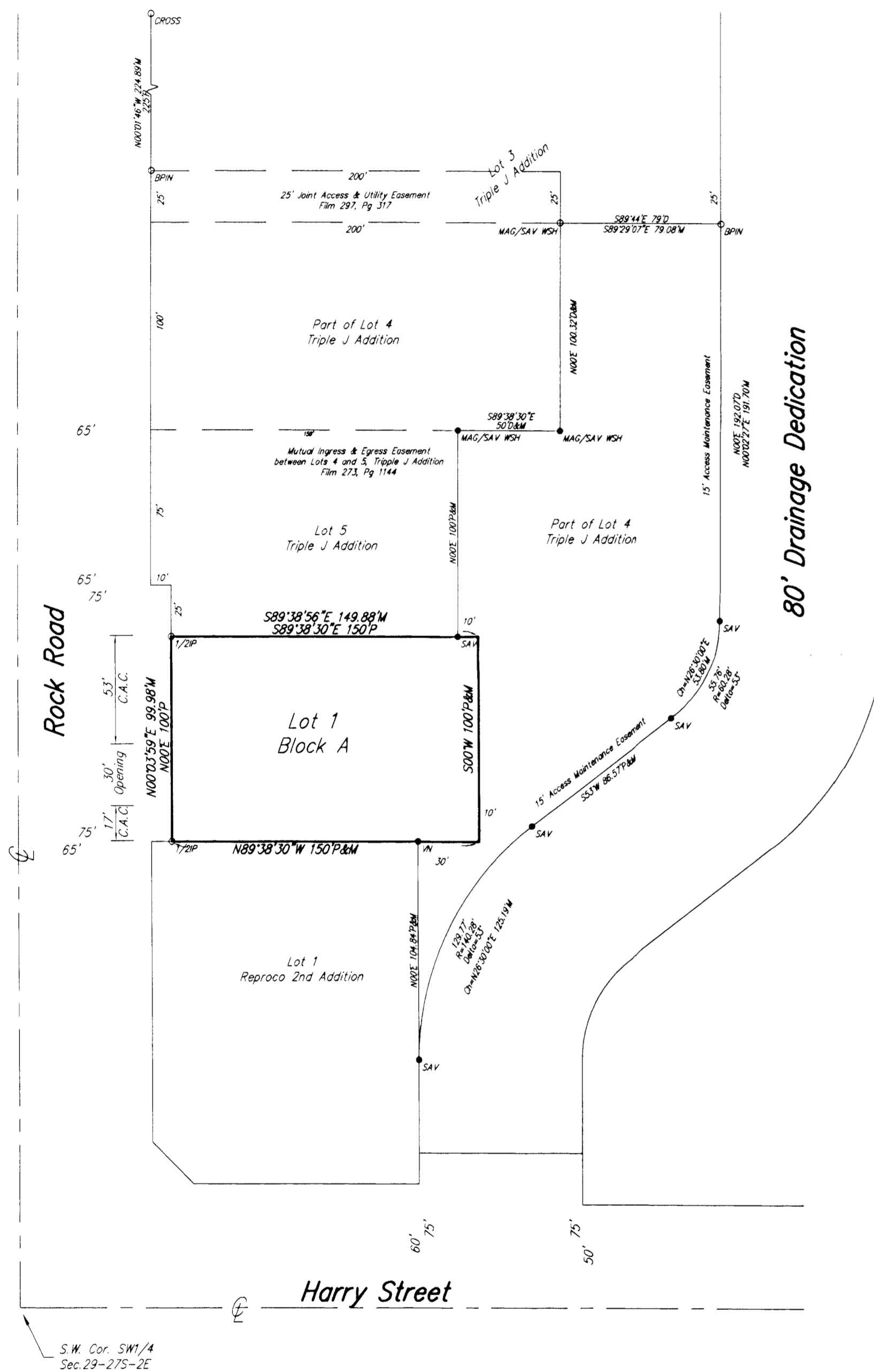
My App't. Exp. \_\_\_\_\_

State of Kansas) SS  
Sedgwick County)

This is to certify that this plat has been filed for record in the office of the Register of Deeds, this \_\_\_\_\_ day of \_\_\_\_\_, 2006, at o'clock \_\_\_\_\_ M. and is duly recorded.

\_\_\_\_\_  
Register of Deeds  
Bill Meek

\_\_\_\_\_  
Deputy  
Tonya Buckingham



C.A.C. = Complete Access Control

LEGEND:

P = Plotted

M = Measured

1/2" P = 1/2" IRON PIPE (FOUND)

3/8" P = 1/2" REBAR W/BAUGHMAN CAP (FOUND)

CHSS P = CHISELED CROSS (FOUND)

MAG/SAY WSP = MAG NAIL W/SAVOY WASHER (FOUND)

MAG/SAY WSP = MAG NAIL W/SAVOY WASHER (SET)

SAV = 1/2" REBAR W/SAVOY CAP (SET)

V = CHISELED V-NOTCH (SET)

Minimum Building Pad Elevation = 143.0 City Datum

