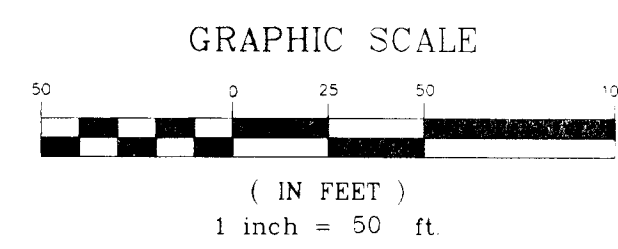
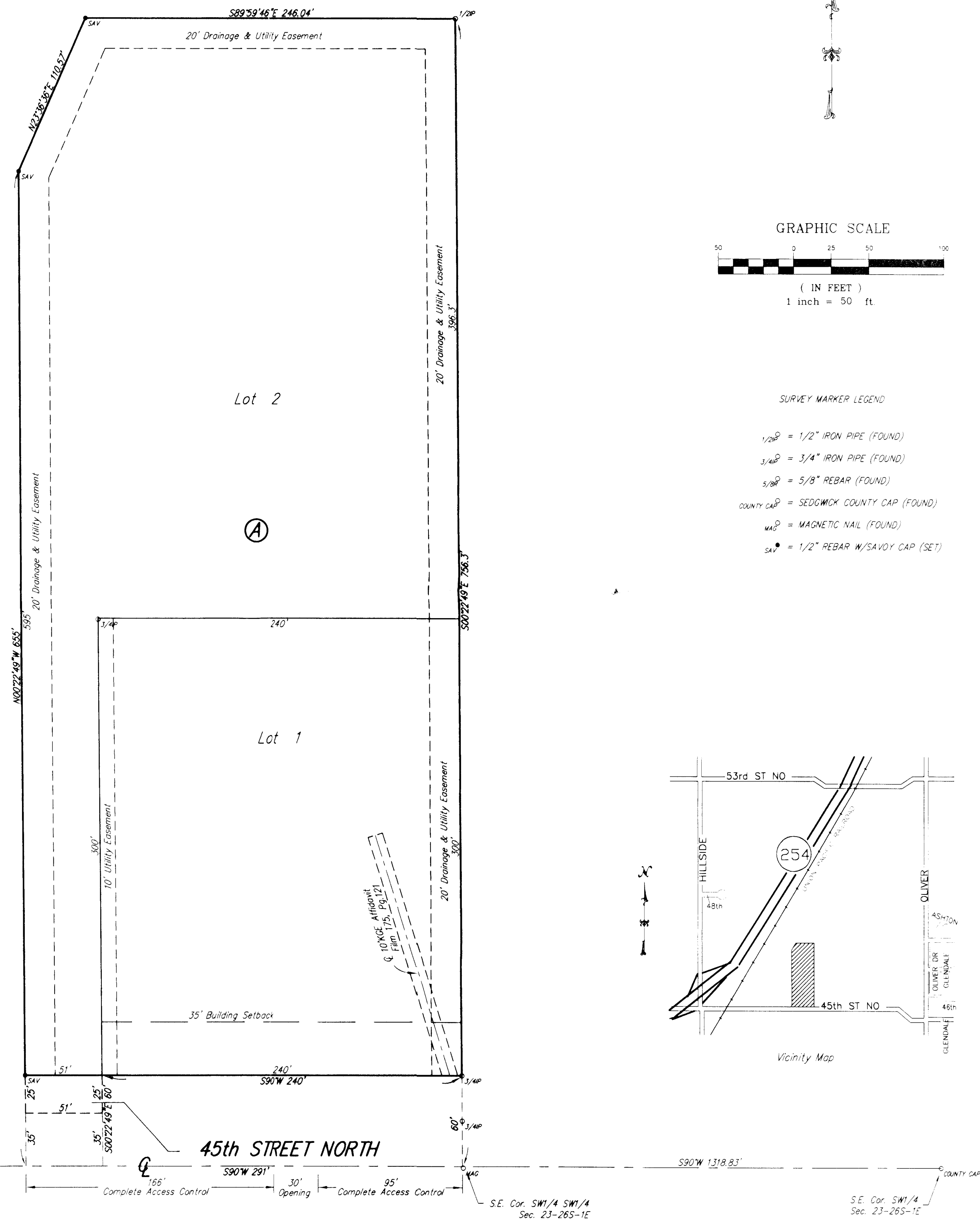
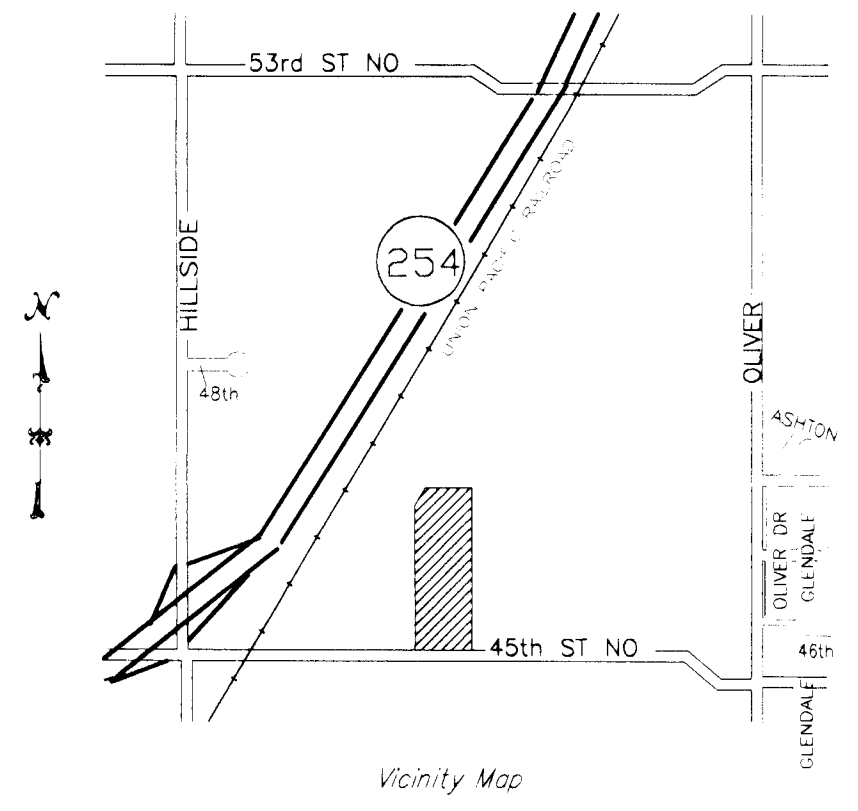


SPEER ADDITION

SEDGWICK COUNTY, KANSAS



- SURVEY MARKER LEGEND**
- 1/2" = 1/2" IRON PIPE (FOUND)
 - 3/4" = 3/4" IRON PIPE (FOUND)
 - 5/8" = 5/8" REBAR (FOUND)
 - COUNTY CAP = SEDGWICK COUNTY CAP (FOUND)
 - M = MAGNETIC NAIL (FOUND)
 - 1/2" = 1/2" REBAR W/SAVOY CAP (SET)



State of Kansas) SS
Sedgwick County)

We, Savoy Company, P.A., Surveyors in aforesaid county and state do hereby certify that, under the supervision of the undersigned, we have surveyed and platted "SPEER ADDITION", Sedgwick County, Kansas and that the accompanying plat is a true and correct exhibit of the property surveyed, described as and being a replat of:

Lot 1, Block 1, Ryding Addition to Sedgwick County, Kansas.
AND
Beginning at the S.E. corner of the SW1/4, of the SW1/4 of Sec. 23, Twp. 26-S, R-1-E of the 6th P.M., Sedgwick County, Kansas; thence west, 291 feet; thence north, 655 feet; thence northeasterly, 110.57 feet to a point 756.3 feet north of the south line of the SW1/4; thence east, 246.03 feet to the east line of the SW1/4, of the SW1/4; thence south, 756.3 feet to beginning, except the south 35 feet for road, and except that part platted as Ryding Addition to Sedgwick County, Kansas.

All Public easements and dedications being vacated by virtue of K.S.A. 12-512(b).

Savoy Company, P.A.

Date 23 Mark A. Savoy PLS #788 Surveyor

Know all men by these presents that I, the undersigned, have caused the land described in the surveyors certificate to be platted into Lots, Block and Street to be known as "SPEER ADDITION", Sedgwick County, Kansas. The Street is hereby dedicated to and for the use of the public. The utility easements are hereby granted for the construction and maintenance of all public utilities. The Drainage and Utility easements are hereby granted for the construction and maintenance of all public utilities and for drainage purposes. A drainage plan has been developed for this plat and all drainage easements, rights-of-way, or reserves shall remain at established grades, or as modified with the approval of the appropriate governing Engineer, and unobstructed to allow for the conveyance of stormwater. Access control is hereby granted to the City of Wichita as indicated on the face of the plat.

Julie Speer
Julie Speer

State of Kansas) SS
Sedgwick County)

The foregoing instrument acknowledged before me, this 23rd day of April, 2008, by Julie Speer.

Linda S. Hamby Notary Public
My App't. Exp. 10/31/2011

This plat of "SPEER ADDITION", Sedgwick County, Kansas, has been submitted to and approved by the Wichita-Sedgwick County Metropolitan Area Planning Commission, Wichita, Kansas.

Dated this _____ day of _____, 2007.

Wichita-Sedgwick County Metropolitan Area Planning Commission

M.S. Mitchell Chairman

John L. Schiegel Secretary

This plat approved and all dedications shown hereon, accepted by the City Council of the City of Wichita, Kansas, this _____ day of _____, 2008.

Carlos Mayans Mayor

Karen Sublett City Clerk

Reviewed in accordance with K.S.A. 58-2005 on this _____ day of _____, 2008.

Tricia L. Robella, LS #1246 Deputy County Surveyor Sedgwick County Kansas

Entered on transfer record this _____ day of _____, 2008.

Don Brace County Clerk

State of Kansas) SS
Sedgwick County)

This is to certify that this plat has been filed for record in the office of the Register of Deeds, this _____ day of _____, 2008, at o'clock _____ M. and is duly recorded.

Bill Meek Register of Deeds

Tonya Buckingham Deputy



Savoy Company, P.A.
Land Surveyors