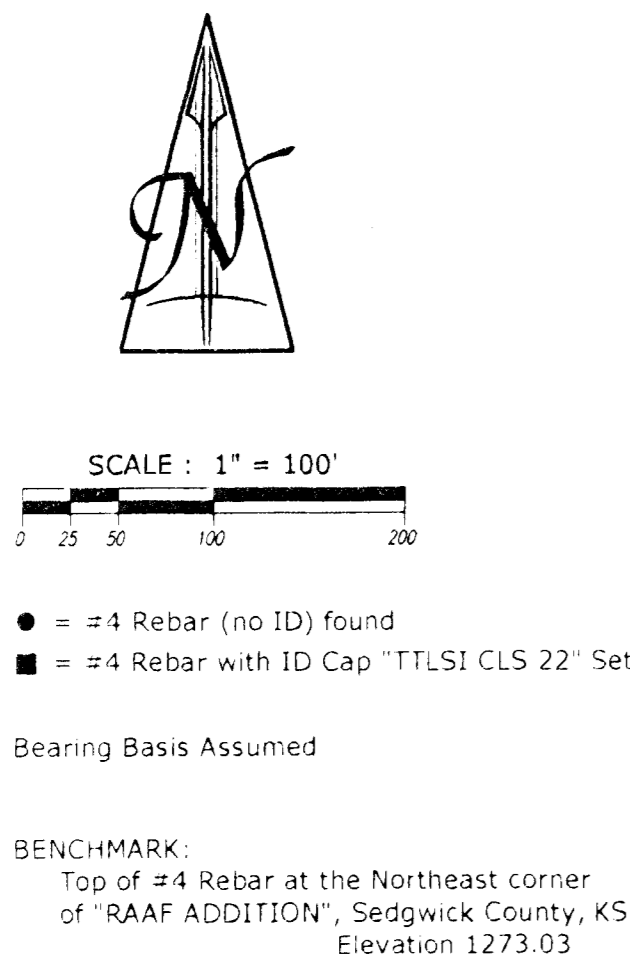
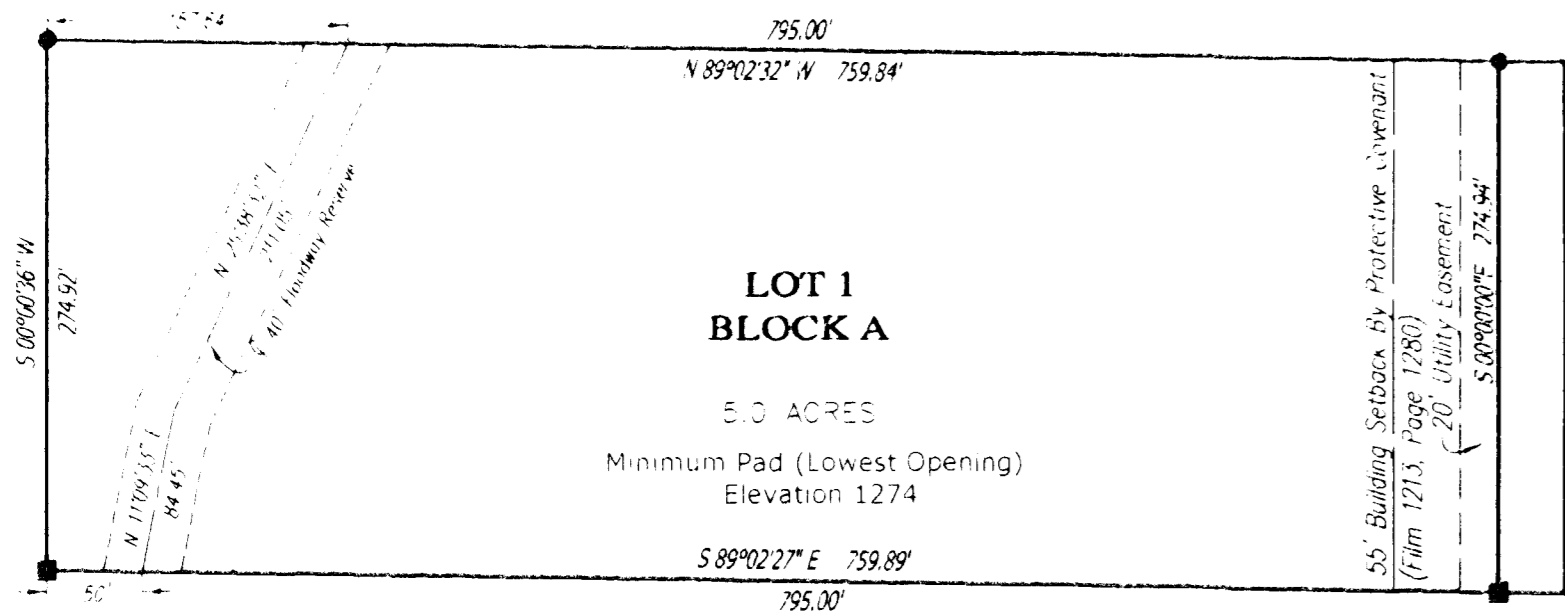


**FINAL PLAT OF**  
**"STEFFENS' ESTATES"**  
**AN ADDITION TO SEDGWICK COUNTY, KANSAS**  
**IN THE NORTHWEST QUARTER OF SECTION 30**  
**TOWNSHIP 29 SOUTH, RANGE 1 EAST OF THE 6TH P.M.**



State of Kansas )  
Sedgwick County ) ss

Terra Tech Land Surveying, Inc., a corporation registered and authorized to practice Land Surveying in the State of Kansas, hereby certifies that it has surveyed and platted "STEFFENS' ESTATES", an Addition to Sedgwick County, Kansas, and the accompanying plat is a true and correct exhibit of such survey described as:

A tract of land in the Northwest Quarter of Section 30, Township 29 South, Range 1 East of the Sixth Principal Meridian, Sedgwick County, Kansas, described as: Being South 89°30'00" West, a distance of 795.00 feet West of the Northeast corner of the Northwest Quarter of said Section 30; thence South 1°27'00" East, parallel with the East line of the Northwest Quarter of said Section 30, a distance of 880.00 feet for a Point of Beginning; thence continuing South 1°27'00" East, a distance of 275.00 feet to a point; thence South 89°30'00" West, a distance of 795.00 feet to a point; thence North 1°27'00" West, a distance of 275.00 feet to a point; thence North 89°30'00" East, a distance of 795.00 feet to the Point of Beginning. Said tract contains 5.0 acres, more or less, and is subject to any easements, agreements, rights of way and restrictions of record.

TERRA TECH LAND SURVEYING, INC.

*Michele Webster* LS #958 Date \_\_\_\_\_

This plat of "STEFFENS' ESTATES", an Addition to Sedgwick County, Kansas, has been submitted to and approved by the Wichita-Sedgwick County Metropolitan Area Planning Commission, Wichita, Kansas.

Dated this \_\_\_\_\_ day of \_\_\_\_\_, 2005.

WICHITA-SEDGWICK COUNTY  
METROPOLITAN AREA PLANNING COMMISSION

\_\_\_\_\_, Chairman

Morris K. Dunlap

\_\_\_\_\_, Secretary

John L. Schlegel

State of Kansas )  
County of Sedgwick ) ss

The dedications shown on the plat, if any, are hereby accepted by the Board of County Commissioners, Sedgwick County, Kansas, on \_\_\_\_\_, 2005.

(Seal)

\_\_\_\_\_, Commission Chairman

David M. Unruh

Attest: \_\_\_\_\_, County Clerk

Don Brace

(Seal)

Entered on transfer record this \_\_\_\_\_ day of \_\_\_\_\_, 2005.

\_\_\_\_\_, County Clerk

Don Brace

State of Kansas )  
Sedgwick County ) ss

This is to certify that this instrument was filed for record in the Register of Deeds Office, at \_\_\_\_\_ o'clock \_\_\_\_\_ M., on the \_\_\_\_\_ day of \_\_\_\_\_, 2005.

\_\_\_\_\_, Register of Deeds

Bill Meek

\_\_\_\_\_, Deputy

Tonya Buckingham

State of Kansas )  
Sedgwick County )

This instrument was acknowledged before me this 17 day of August, 2005, by Kerry W. Steffens and Wanda A. Steffens.

*Shanda Knipp-Barnes*, Notary Public  
Shanda Knipp-Barnes

My Commission Expires: 11-10-05

Reviewed in accordance with K.S.A. 58-1201 day of \_\_\_\_\_, 2005.

Tricia L. Robello, LS#1246  
Deputy County Surveyor  
Sedgwick County, Kansas



TERRA TECH  
LAND SURVEYING INC.

22200 N. 63rd St. S.  
Wichita, Kansas 67149  
(316) 794-2863 / 794-3273  
Fax (316) 794-3274