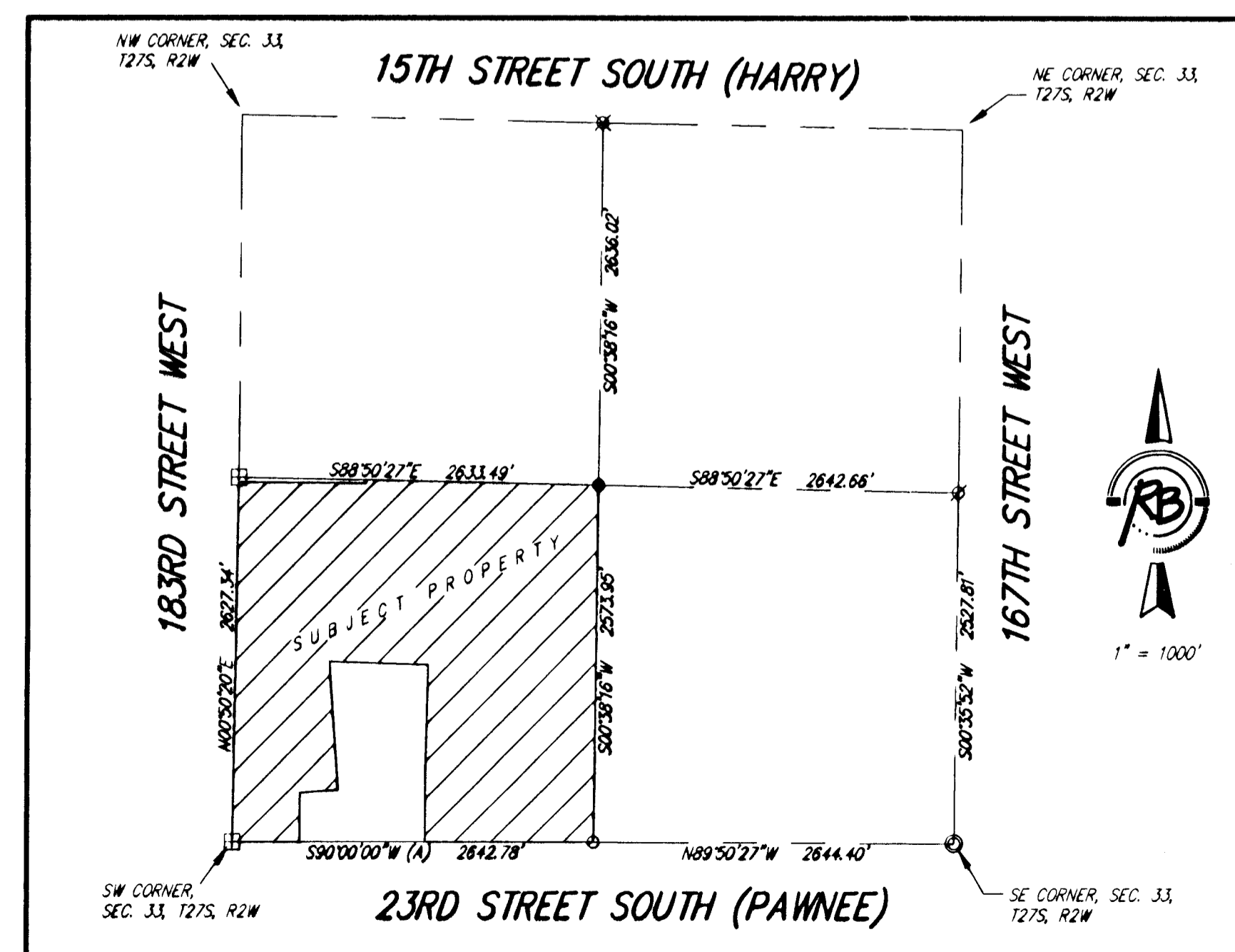
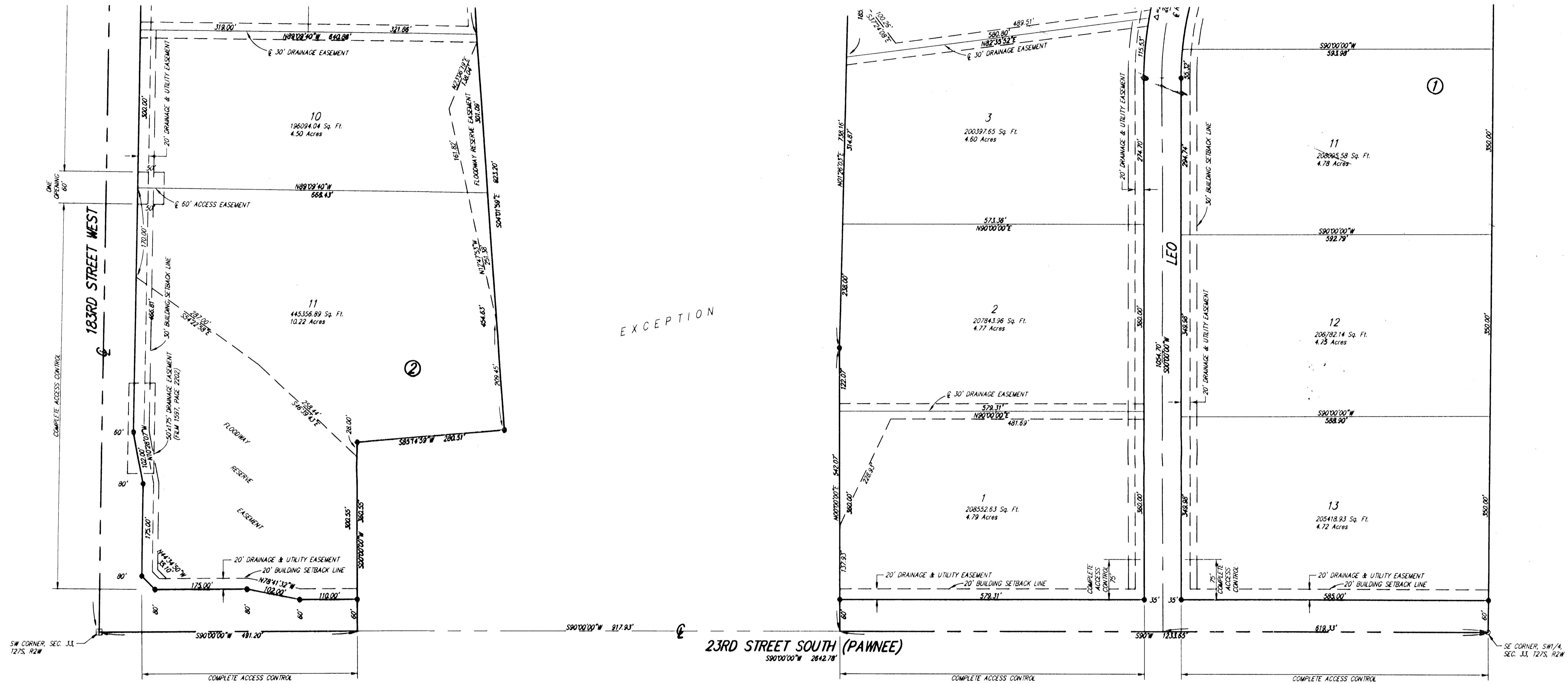


MARIE'S MEADOW NORTH ADDITION

Sedgwick County, Kansas



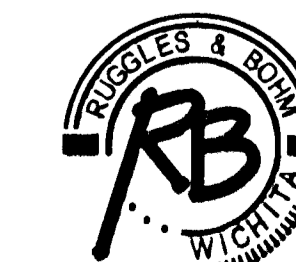
1" = 100'

(A) = Assumed

- SURVEY MARKER LEGEND**
- ⊞ RAILROAD SPIKE W/CHISELED "*" (FOUND)
 - 1/2" IRON PIPE (FOUND)
 - 3/4" IRON PIPE (FOUND)
 - ⊗ 1/2" REBAR (FOUND)
 - ⊗ 5/8" REBAR IN THIMBLE (FOUND)
 - 5/8" REBAR W/REB CAP (SET)

BENCH MARK: RAILROAD SPIKE IN NORTH FACE OF H.P.
30' SOUTH OF THE NORTHEAST CORNER OF THE NORTHWEST
QUARTER OF SECTION 4, T28S, R2W OF THE 6TH P.M.
ELEV.=1439.36 MSL

ON SITE B.M.: "C" ON THE CENTER OF THE NORTH HEADWALL
ON EAST SIDE OF AN R.R.C. 464' NORTHEAST OF THE SOUTHWEST
CORNER OF SECTION 33, 127S, R2W OF THE 6TH P.M.
ELEV.=1436.32 MSL



Ruggles & Bohm, P.A.
Engineering, Surveying, Land Planning

DWG FILE: SURVEY BASE
PROJECT NO. 2683P
OCTOBER 25, 2005

924 North Main
Wichita, Kansas 67203
www.rbkansas.com

(316) 264-8008
(316) 264-4621 fax
E-mail: info@rbkansas.com