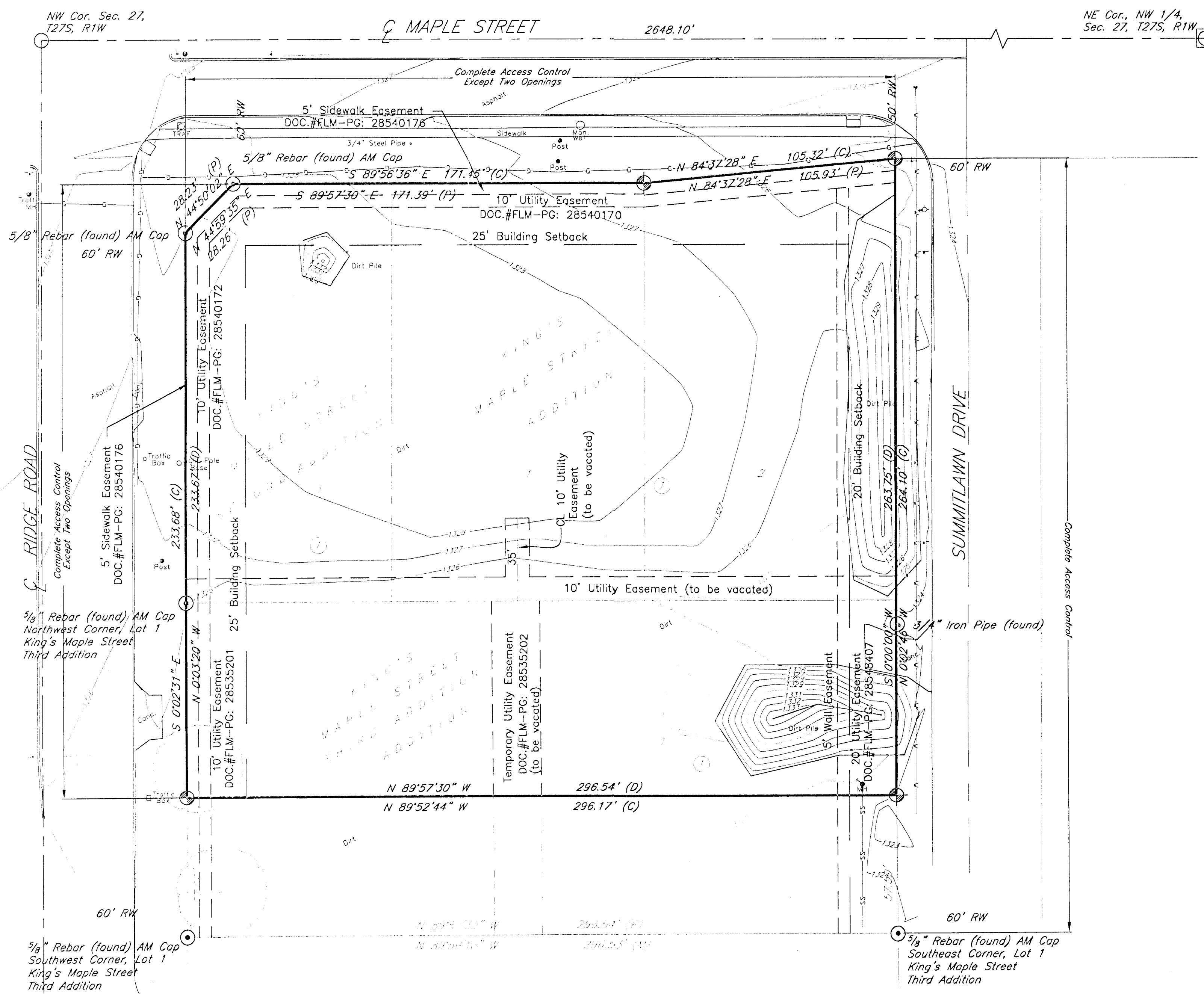


# MAPLERIDGE ADDITION CITY OF WICHITA, SEDGWICK COUNTY, KANSAS

Part of the NW 1/4, Section 27, Township 27 South, Range 1 West of the 6th. P.M.



State of Kansas )  
County of Sedgwick ) ss

I, Bradley C. Ward, a registered land surveyor in aforesaid County and State, do hereby certify that I have surveyed and platted "Mapleridge Addition", Wichita, Sedgwick County, Kansas, and that the accompanying plat is a true and correct exhibit of the property surveyed, described as being:

Lots 1 and 2, Block 1, King's Maple Street Addition, Wichita, Sedgwick County, Kansas.  
and  
Lot 1, Block 1, King's Maple Street Second Addition, Wichita, Sedgwick County, Kansas.  
and  
Lot 1, Block 1, except the south 57.50 feet thereof, King's Maple Street Third Addition, Wichita, Sedgwick County, Kansas.

All being situated in the NW 1/4 of Sec. 27, Twp. 27-S, R-1-W of the 6th P.M., Sedgwick County, Kansas.  
All easements and rights-of-way within Mapleridge Addition are hereby vacated by virtue of KSA 12-512(b) amended.

Bradley C. Ward, L.S. #920 \_\_\_\_\_ date

State of Kansas )  
County of Sedgwick ) ss

Know all men by these presents, that we, the undersigned, have caused the land described in the surveyor's certificate to be platted into Lots, Blocks and a Street to be known as Mapleridge Addition, Sedgwick County, Kansas. Any easements are hereby granted as indicated for constructing, maintaining, operating, and repairing public utilities. A Drainage Plan for this addition has been established, and can be obtained from the City of Wichita. Development of any lot will need to conform to this Drainage Plan. The land contained herein is held and shall be conveyed subject to any restrictions, reservations, and covenants on file or hereafter filed in the office of the Register of Deeds of Sedgwick County, Kansas.

Access Control is hereby granted as follows:

- There shall be a maximum of 2 openings on Ridge Road and 2 openings on Maple.

By: \_\_\_\_\_  
XXXXXXXX, Owner \_\_\_\_\_ date

State of Kansas )  
County of Sedgwick ) ss

This instrument was acknowledged before me on this \_\_\_\_\_ day of \_\_\_\_\_, 2007, by XXXXXXXX

Notary Public

My Commission Expires: \_\_\_\_\_

State of Kansas )  
City of Wichita ) ss

This plat of Mapleridge Addition, Wichita, Sedgwick County, Kansas, has been submitted to and approved by the Wichita-Sedgwick County Metropolitan Area Planning Commission, Wichita, Kansas. Dated this \_\_\_\_\_ day of \_\_\_\_\_, 2007. Wichita-Sedgwick County Metropolitan Area Planning Commission.

Darrell A. Downing, Chairman

John L. Schlegel, Secretary

State of Kansas )  
City of Wichita ) ss

This plat approved and all dedications shown hereon accepted by the City Council of the City of Wichita, Kansas, this \_\_\_\_\_ day of \_\_\_\_\_, 2007.

At the Direction of the City Council

Carlos Mayans, Mayor

Karen Sublette, City Clerk

Entered on transfer record this \_\_\_\_\_ day of \_\_\_\_\_, 2007.

State of Kansas )  
County of Sedgwick ) ss

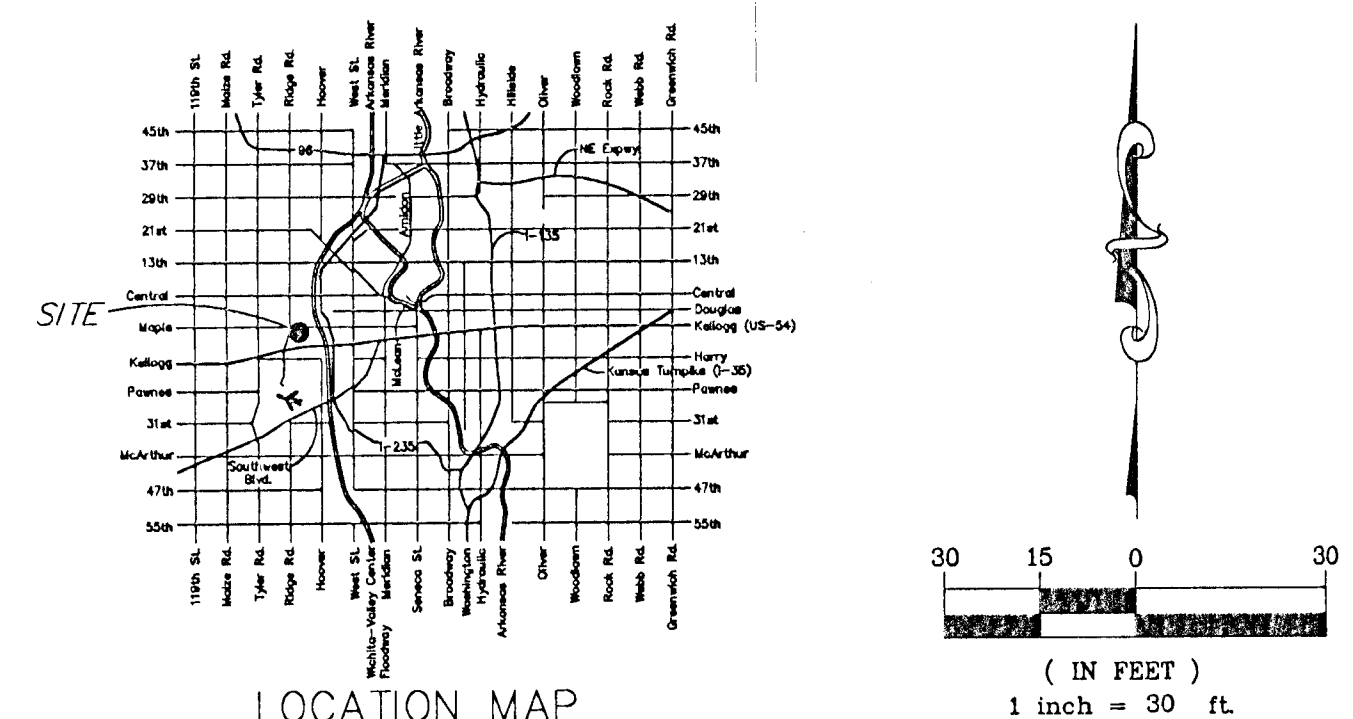
This is to certify that this plat has been filed for record in the Office of the Register of Deeds this \_\_\_\_\_ day of \_\_\_\_\_, 2007, at \_\_\_\_\_ o'clock \_\_\_\_\_ M, and is duly recorded.

Bill Meek, Register of Deeds

Tonya Buckingham, Deputy

Reviewed in accordance with K.S.A. 58-2005 on this \_\_\_\_\_ day of \_\_\_\_\_, 2007.

Tricia L. Robello, L.S. #1246  
Deputy County Surveyor  
Sedgwick County, Kansas



Filename: 07013\dwg\one step final.dwg Prepared: 1-17-07

516 S. Market, Wichita, KS 67202 316/264-0242