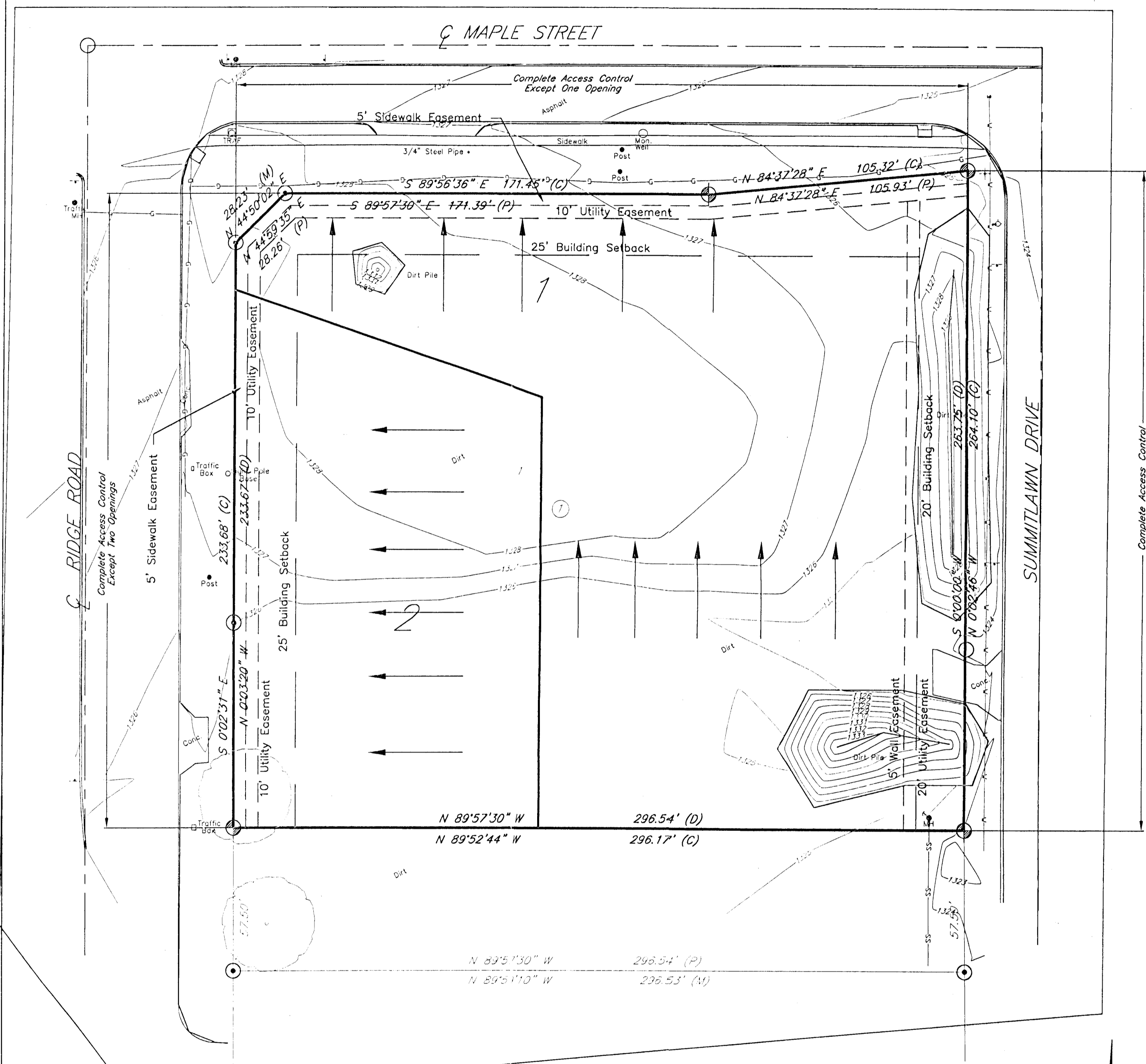
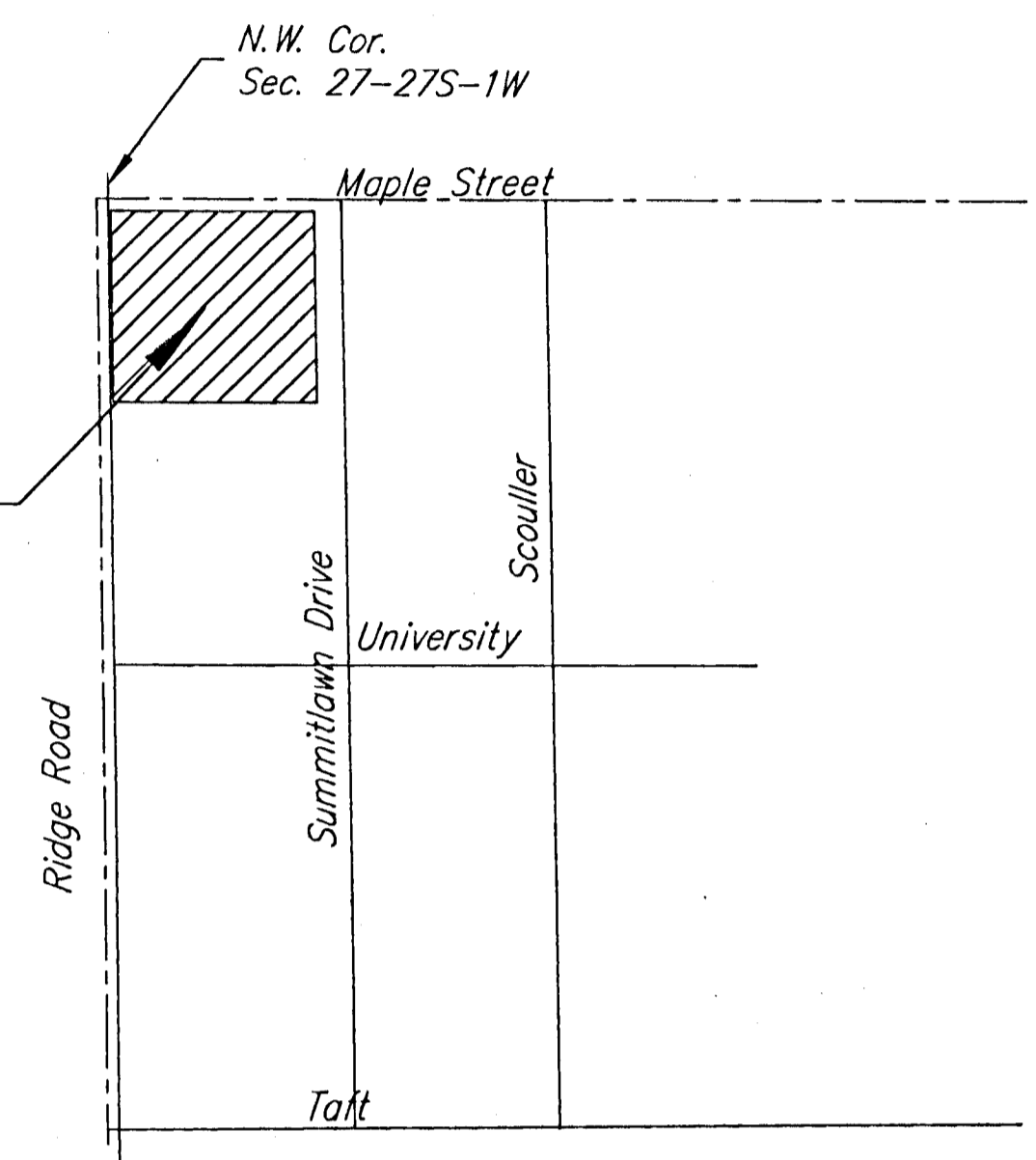


DRAINAGE PLAN MAPLERIDGE ADDITION



Engineer's Note:
 Site drainage calculations developed using the Rational Method for peak runoff. "C" & "I" values established from the City of Wichita Design Criteria and Documentation.

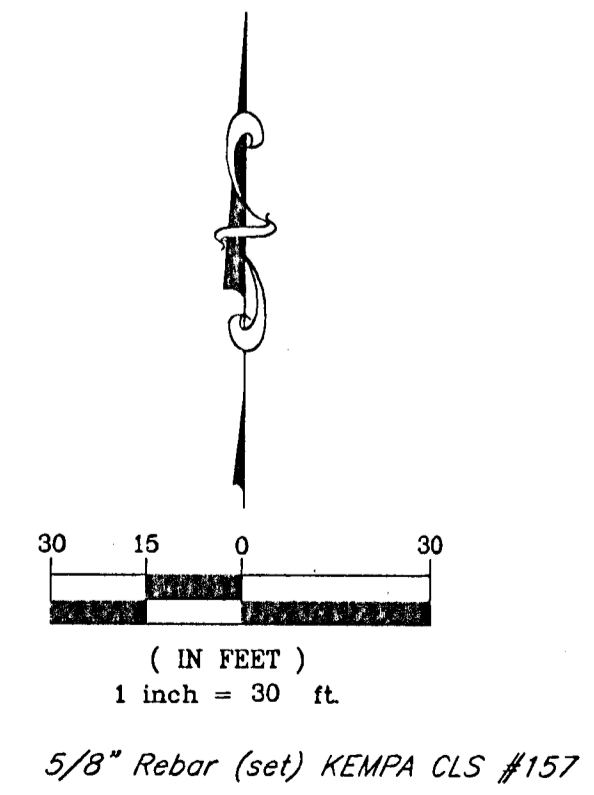
Storm Water Detention shall be designed during the development of site plans. It may be handled through parking lot detention, underground storage, a detention pond, or a combination of these methods. The chart for "Proposed Site Drainage" shows approximate detention volumes, which may vary slightly due to final site layout.



VICINITY MAP

Existing Site Drainage								
Area #	Acres	Tc	C5	I5	C100	I100	Q5	Q100
1	1.19	15 min	0.54	4.56	0.68	7.37	2.93cfs	5.96cfs
2	0.55	15 min	0.54	4.56	0.68	7.37	1.35cfs	2.76cfs
Existing Peak Runoff=							4.28cfs	8.72cfs

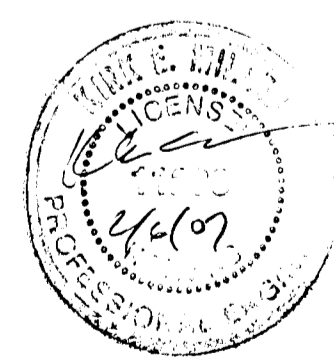
Proposed Site Drainage									
Area #	Acres	Tc	C5	I5	C100	I100	Q5	Q100	Det. Vol.
1	1.19	15 min	0.69	4.56	0.80	7.37	3.74cfs	7.02cfs	1,575 CF
2	0.55	15 min	0.69	4.56	0.80	7.37	1.73cfs	3.24cfs	500 CF
Proposed Peak Flow=							6.90cfs	11.40cfs	



OWNER: Maple & Ridge LLC

AREA: 1.73 acres (On Site)

BENCHMARK:
 City disc on southwest corner of Maple and Ridge, 69' south of centerline, 97' west of centerline and 10.5' north of face of sidewalk. Elevation=1329.47 MSL.



Filename: 070131.dwg (one step final.dwg) Prepared: 1-23-07

kemiller

engineering

516 S. Market, Wichita, KS 67202 316/264-0242