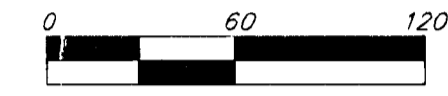
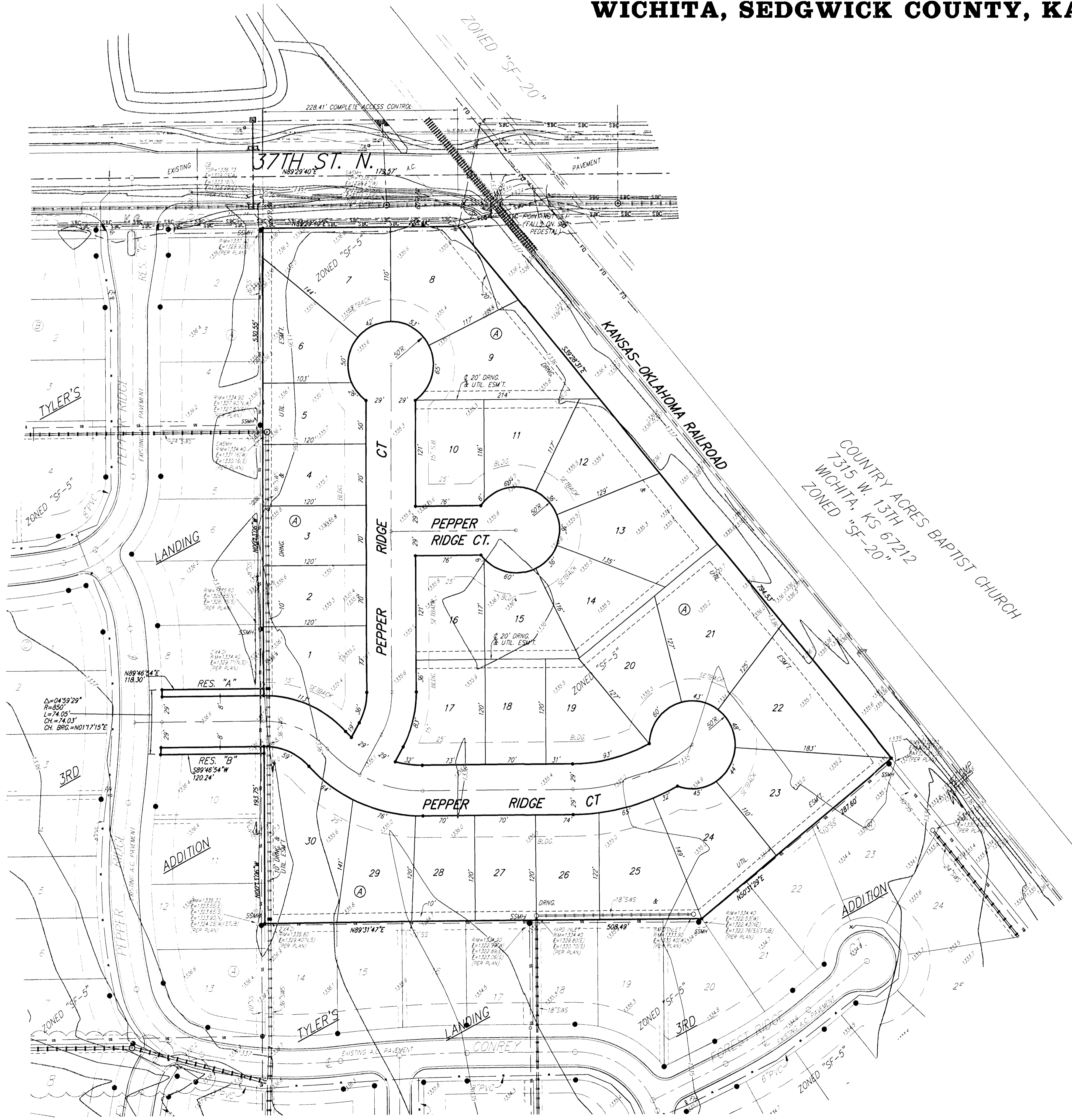


PRELIMINARY PLAT

# TYLERS LANDING 4TH ADDITION

## WICHITA, SEDGWICK COUNTY, KANSAS



DATE OF TOPOGRAPHY: 1 JULY 2002  
 DATE OF PREPARATION: 17 MARCH 2008  
 CONTOUR INTERVAL = 1 FT.

• = #4 REBAR W/ "BAUGHMAN" CAP (SET)

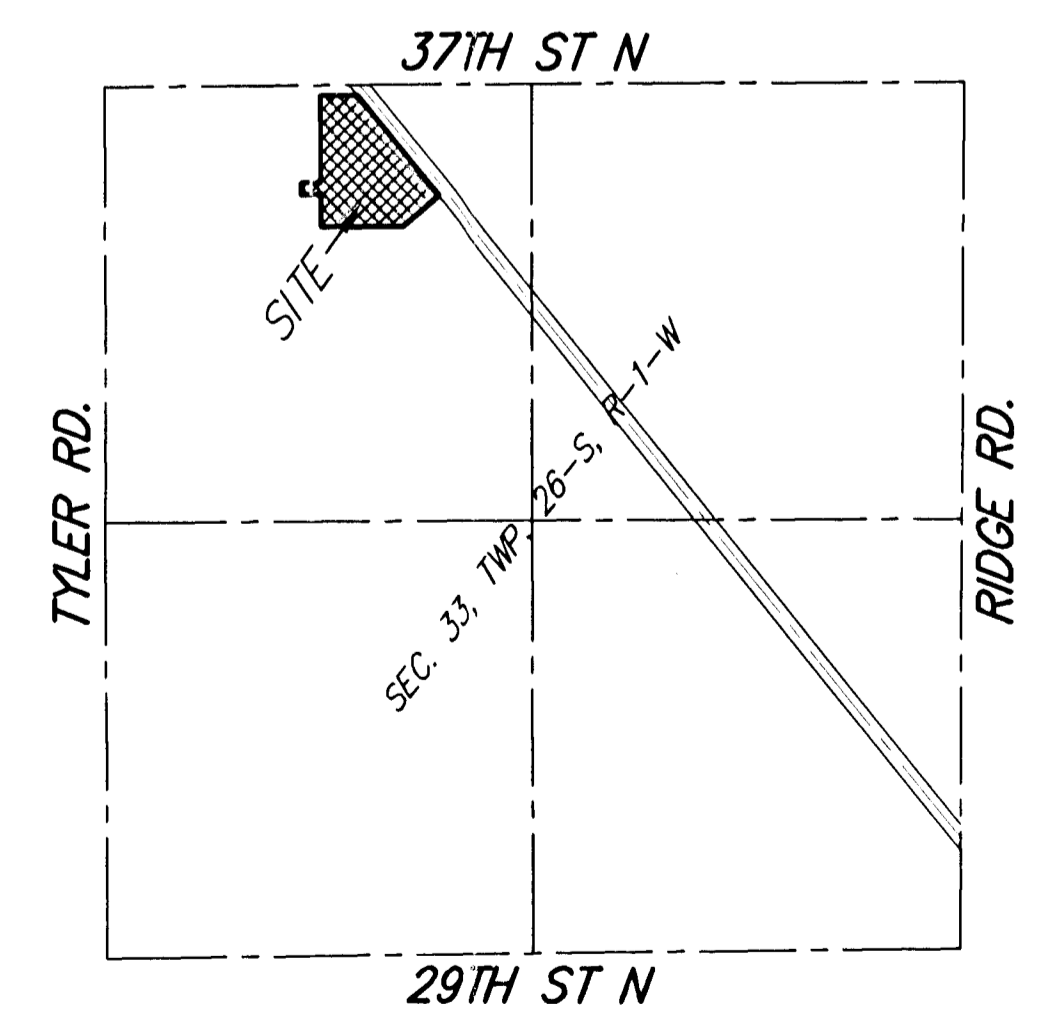
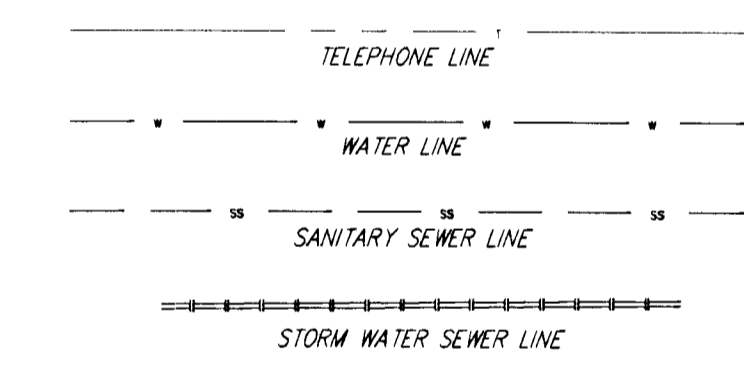
RESERVES "A" AND "B" ARE HEREBY RESERVED FOR ENTRY MONUMENTS, OPEN SPACE, LANDSCAPING, BERMS, UTILITIES, AND DRAINAGE PURPOSES.

OWNER:  
 R & R REALTY, LLC  
 ATTY: JAY W. RUSSELL  
 P.O. BOX 75337  
 WICHITA, KS 67275-5337  
 PH: 316-722-2417

LEGAL DESCRIPTION:  
 A REPLAT OF ALL OF LOTS 1 AND 9, BLOCK A, TYLER'S LANDING 3RD ADDITION, WICHITA, SEDGWICK COUNTY, KANSAS.

BENCHMARK:  
 "B" = 1/4" NAIL IN CENTER OF CUL-DE-SAC OF THE MOST NORTHERLY FOREST RIDGE CT, TYLER'S LANDING 3RD ADDITION.  
 ELEV. = 1340.13 NGVD29  
 "C" = CUT ON C OF CATCH BASIN LID SOUTH OF THE SW CORNER OF LOT 14, BLOCK A, TYLER'S LANDING 3RD ADDITION.  
 ELEV. = 1337.69 NGVD29

PHC = Fire Hydrant  
 SSMH = Sanitary Sewer Manhole



VICINITY MAP  
 (NO SCALE)

### TYLERS LANDING 4TH ADDITION

17 MARCH 2008

**Baughman Company, P.A.**  
 315 Ellis St., Wichita, KS 67211 F 316-262-7271 F 316-262-0149  
 ENGINEERING | SURVEYING | PLANNING | LANDSCAPE ARCHITECTURE

E:\PLAT\TYLERSLANDING4THADDITION\DWG\TYLERSLANDING4THPL.DWG\ORR