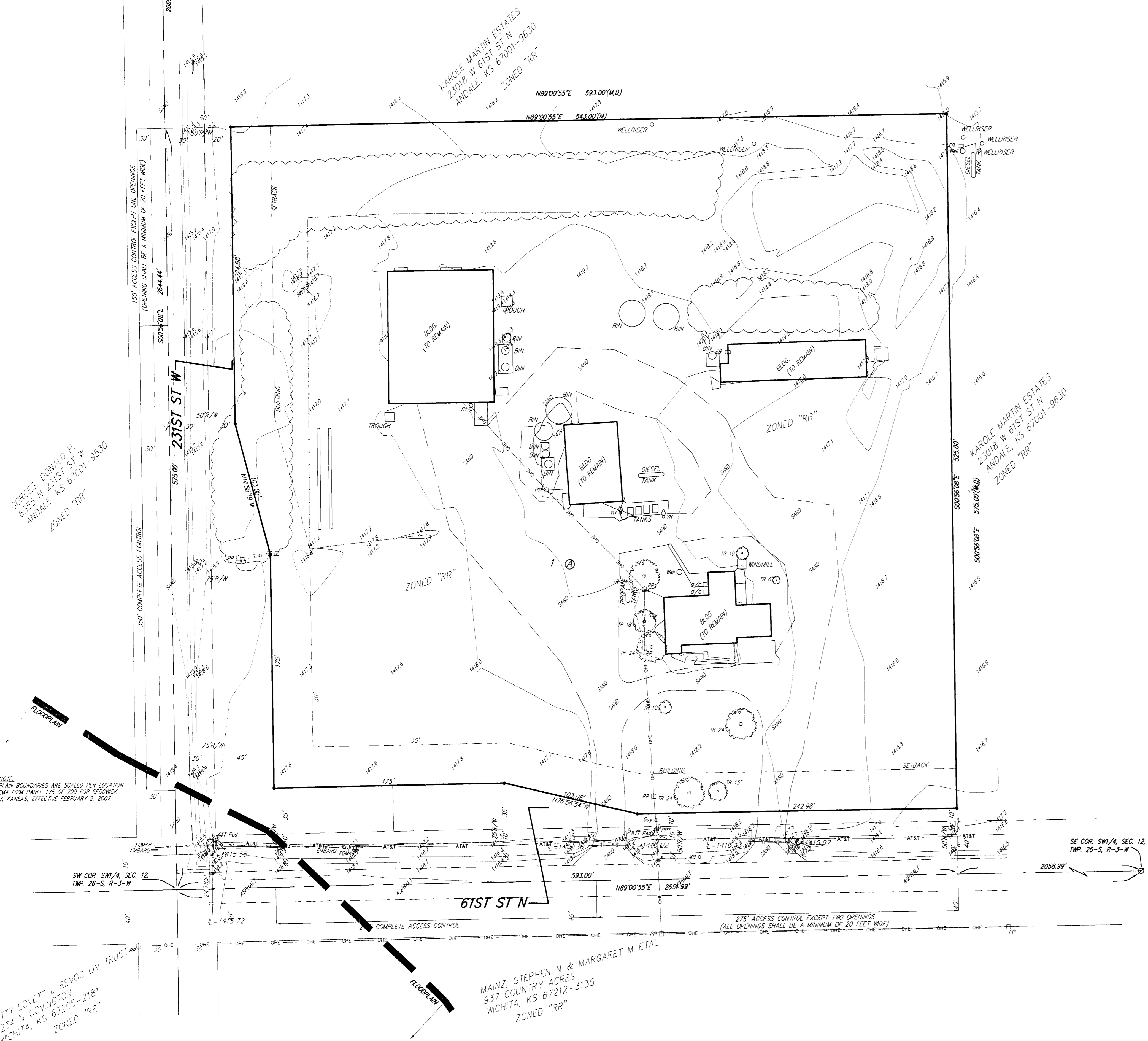


PRELIMINARY PLAT
MARTIN ACRES
 SEDGWICK COUNTY, KANSAS

NW COR. SW1/4, SEC. 12,
 TWP. 26-S, R-3-W



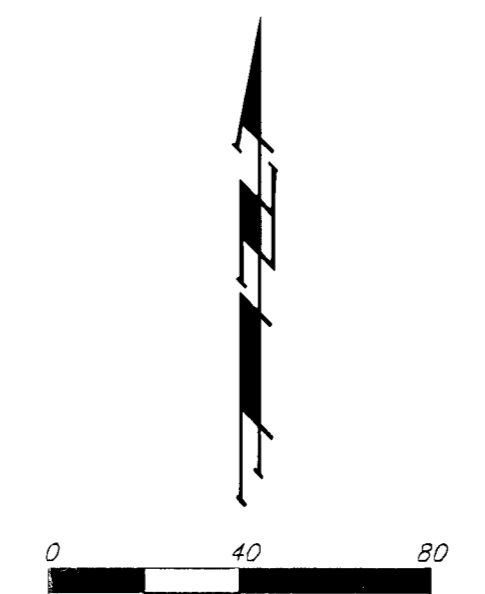
GORGES, DONALD P.
 6355 N 231ST ST W
 ANDALE, KS 67001-9530
 ZONED "RR"

KAROLE MARTIN ESTATES
 23018 W 61ST ST N
 ANDALE, KS 67001-9630
 ZONED "RR"

KAROLE MARTIN ESTATES
 23018 W 61ST ST N
 ANDALE, KS 67001-9630
 ZONED "RR"

MAINZ, STEPHEN N & MARGARET M ETAL
 937 COUNTRY ACRES
 WICHITA, KS 67212-3135
 ZONED "RR"

FEMA NOTE:
 FLOODPLAIN BOUNDARIES ARE SCALED PER LOCATION
 PER FEMA FIRM PANEL 175 OF 700 FOR SEDGWICK
 COUNTY, KANSAS, EFFECTIVE FEBRUARY 2, 2007.



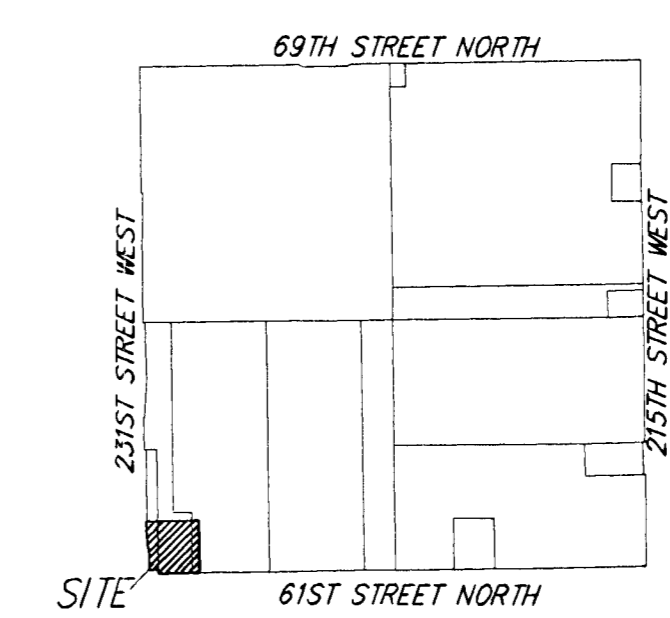
DATE OF PREPARATION: 05 FEBRUARY 2010
 DATE OF TOPOGRAPHY: 9 DECEMBER 2009
 CONTOUR INTERVALS = 1 FOOT

OWNER:
 Joe Martin
 22028 W 61st St N
 Andale, KS 67001
 734-2221

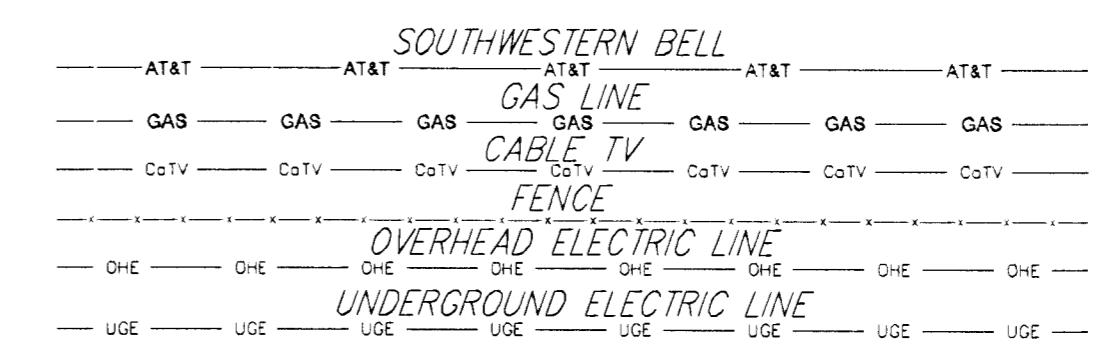
LEGAL DESCRIPTION:
 The south 575.00 feet of the west 593.00 feet of the
 Southwest Quarter of Section 12, Township 26 South,
 Range 3 West of the 6th Principle Meridian, Sedgwick
 County, Kansas, subject to all rights of way of record.

BENCHMARK:
 "X" on North end of 24" RCP 33.4' Northeast of
 Southwest Corner of Section 12, Township 26 South,
 Range 3 West of the 6th Principle Meridian, Sedgwick
 County, Kansas.
 Elevation = 1417.77 NAVD88

FEMA NOTE:
 FLOODPLAIN BOUNDARIES ARE SCALED PER LOCATION
 PER FEMA FIRM PANEL 175 OF 700 FOR SEDGWICK
 COUNTY, KANSAS, EFFECTIVE FEBRUARY 2, 2007.



VICINITY MAP
 SEC. 12, T26S, R3W



BETTY LOVETT L REVOC LIV TRUST
 2234 N COVINGTON
 WICHITA, KS 67205-2181
 ZONED "RR"

MARTIN ACRES

05 FEBRUARY 2010

Baughman Company, P.A.
 315 Bill St. Wichita, KS 67211 P 316-262-1211 F 316-262-0149
 ENGINEERING | SURVEYING | PLANNING | LANDSCAPE ARCHITECTURE

S:\PROJECTS\MARTIN ACRES\PLAT\MARTINACRES_P.DWG\GRA