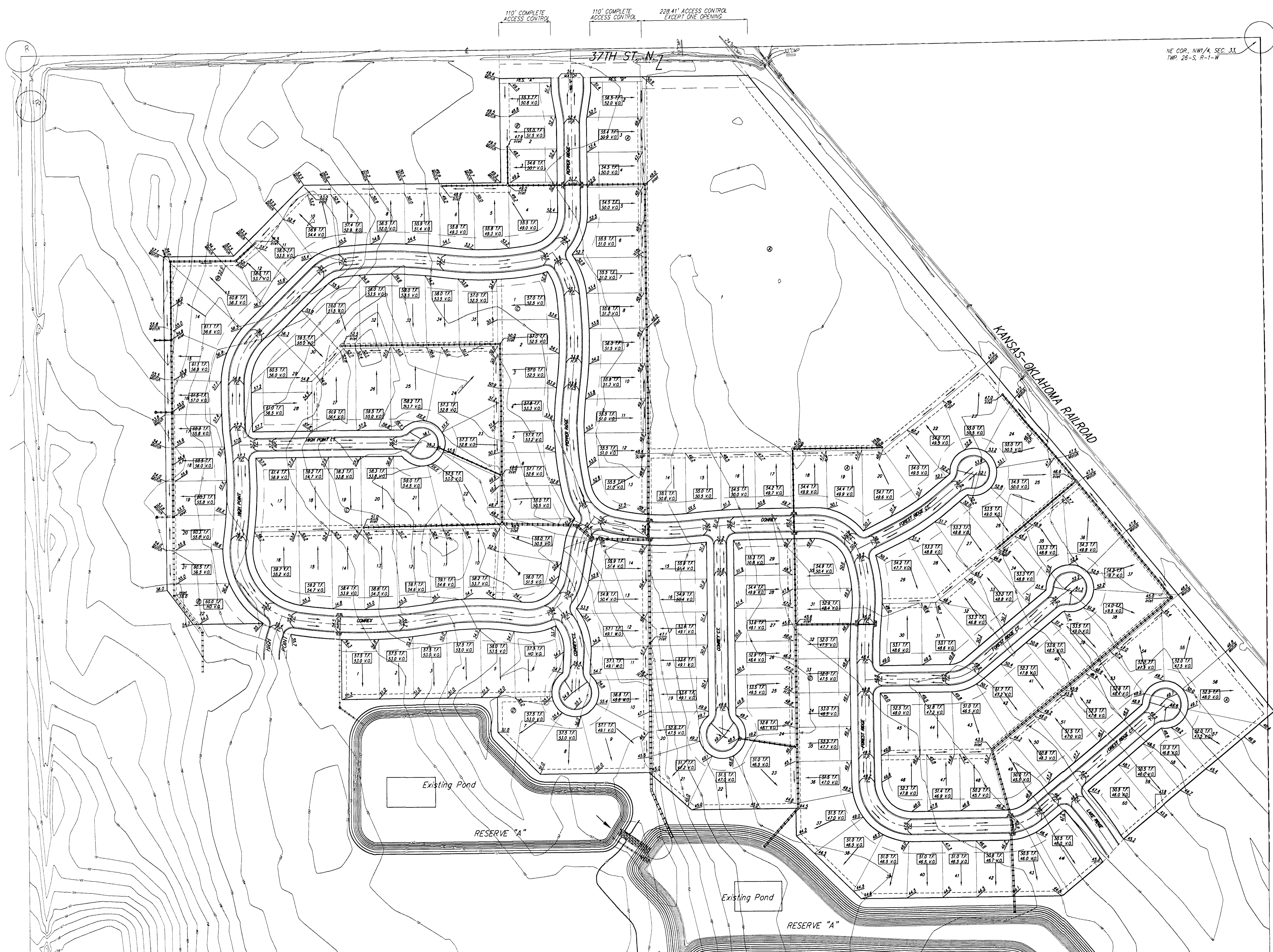

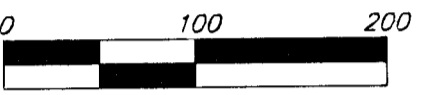


GRADING PLAN

TYLER'S LANDING 3RD ADDITION

WICHITA, SEDGWICK COUNTY, KANSAS





 DATE OF PREPARATION: 14 JUNE 2005
 CONTOUR INTERVALS: 1 FOOT
 = #4 REBAR W/ "BAUGHMAN" CAP (SET)
 (M) = MEASURED
 (P) = PLATTED
 (C) = CALCULATED