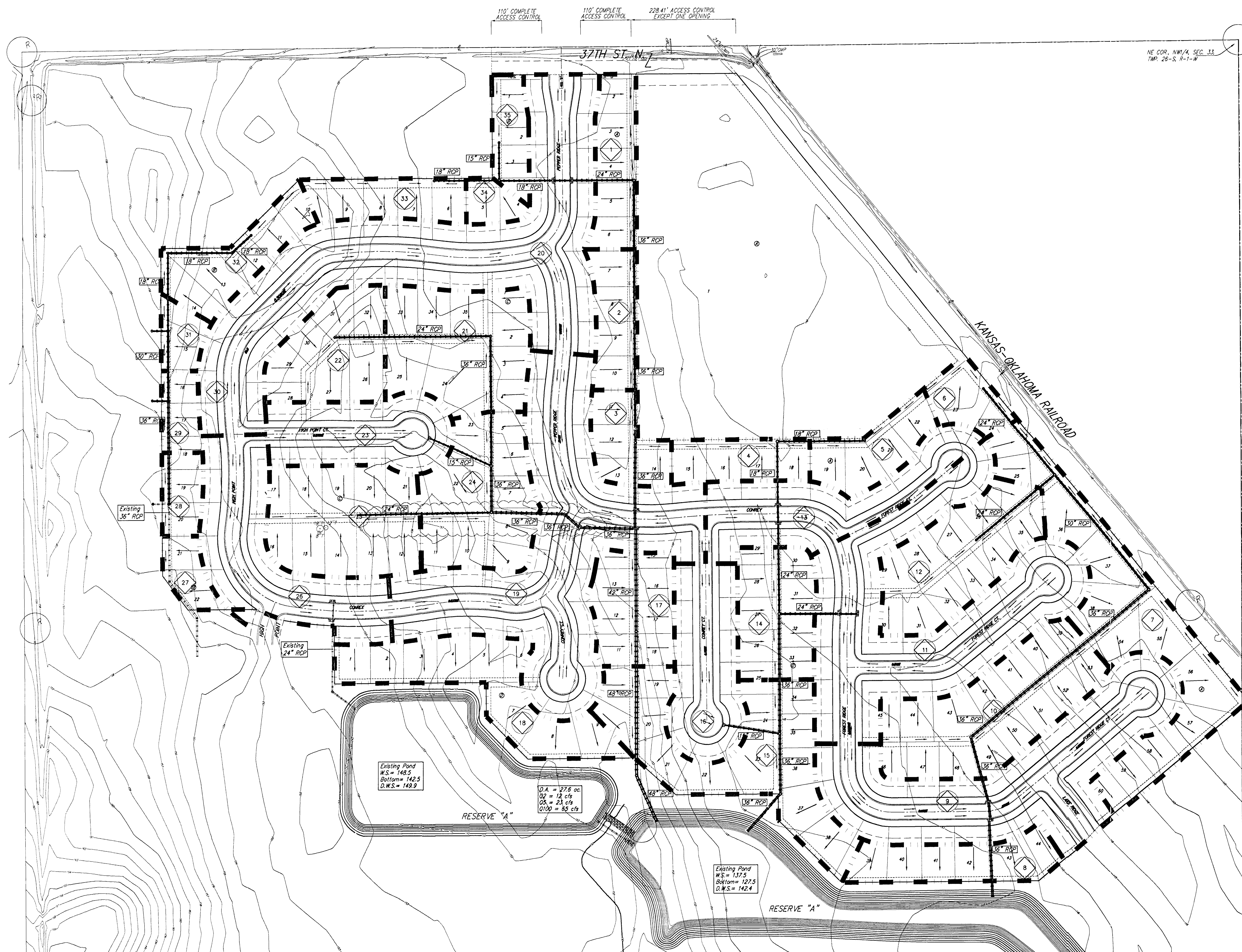

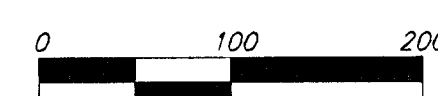


DRAINAGE PLAN TYLER'S LANDING 3RD ADDITION WICHITA, SEDGWICK COUNTY, KANSAS



NE COR., NW/4, SEC. 33,
TWP. 26-S, R-1-W





 DATE OF PREPARATION: 14 JUNE 2005
 CONTOUR INTERVALS: 1 FOOT
 = #4 REBAR W/ "BAUGHMAN" CAP (SET)

(M) = MEASURED
(P) = PLATTED
(C) = CALCULATED

Existing	2yr	5yr	100yr	Developed	2yr	5yr	100yr
Intensity	3.83	4.66	7.37	Intensity	3.83	4.66	7.37
Rational C	0.41	0.45	0.57	Rational C	0.52	0.54	0.74

Basin ID	Area acres	Existing Flowrates			Developed Flowrates		
		2-yr cfs	5-yr cfs	100-yr cfs	2-yr cfs	5-yr cfs	100-yr cfs
1	0.77	1.2	1.6	3.2	1.5	1.9	4.2
2	0.65	1.0	1.3	2.7	1.3	1.6	3.5
3	0.62	0.9	1.3	2.8	1.2	1.5	3.4
4	0.84	1.0	1.3	2.7	1.3	1.6	3.5
5	0.72	1.1	1.5	3.0	1.4	1.8	3.9
6	0.45	0.7	0.9	1.9	0.9	1.1	2.5
7	2.50	4.0	5.3	11	5.2	6.4	14
8	0.90	1.4	1.8	3.8	1.8	2.2	4.9
9	3.40	5.2	7.0	14	6.8	8.4	19
10	2.10	3.2	4.3	8.8	4.2	5.2	11
11	3.70	5.7	7.6	16	7.4	9.1	20
12	1.60	2.5	3.3	6.7	3.2	3.9	8.7
13	1.62	2.5	3.3	6.8	3.2	4.0	8.8
14	1.10	1.7	2.3	4.9	2.2	2.7	6.0
15	2.30	3.5	4.7	9.7	4.6	5.7	13
16	1.40	2.1	2.9	6.9	2.8	3.4	7.6
17	0.98	1.5	2.0	4.1	2.0	2.4	5.3
18	1.50	2.3	3.1	6.3	3.0	3.7	8.2
19	4.40	6.7	9.0	18	8.8	10.8	24
20	5.00	7.7	10	21	10.0	12.3	27
21	1.70	2.6	3.5	7.1	3.4	4.2	9.3
22	1.20	1.8	2.5	5.0	2.4	3.0	6.5
23	1.40	2.1	2.9	5.9	2.8	3.4	7.8
24	1.70	2.6	3.5	7.1	3.4	4.2	9.3
25	1.80	2.8	3.7	7.6	3.6	4.4	9.8
26	2.00	3.1	4.1	8.4	4.0	4.9	11
27	0.31	0.5	0.6	1.3	0.6	0.8	1.7
28	0.40	0.6	0.8	1.7	0.8	1.0	2.2
29	0.38	0.6	0.8	1.6	0.8	0.9	2.1
30	0.00	0.0	0.0	0.0	0.0	0.0	0.0
31	0.29	0.4	0.6	1.2	0.5	0.7	1.6
32	0.50	0.8	1.0	2.2	1.0	1.2	2.7
33	0.71	1.1	1.5	3.0	1.4	1.7	3.9
34	0.24	0.4	0.5	1.0	0.5	0.6	1.3
35	0.45	0.7	0.9	1.9	0.9	1.1	2.5

NOTE: Refer to "Tyler's Landing Drainage Plan" & "Tyler's Landing 2nd Drainage Plan" for existing pond calculations.

Existing Pond
W.S. = 148.0
Bottom = 142.5
D.W.S. = 149.9

D.A. = 27.8 ac
Q2 = 12 cfs
Q5 = 23 cfs
Q100 = 65 cfs

Existing Pond
W.S. = 137.5
Bottom = 127.5
D.W.S. = 142.4