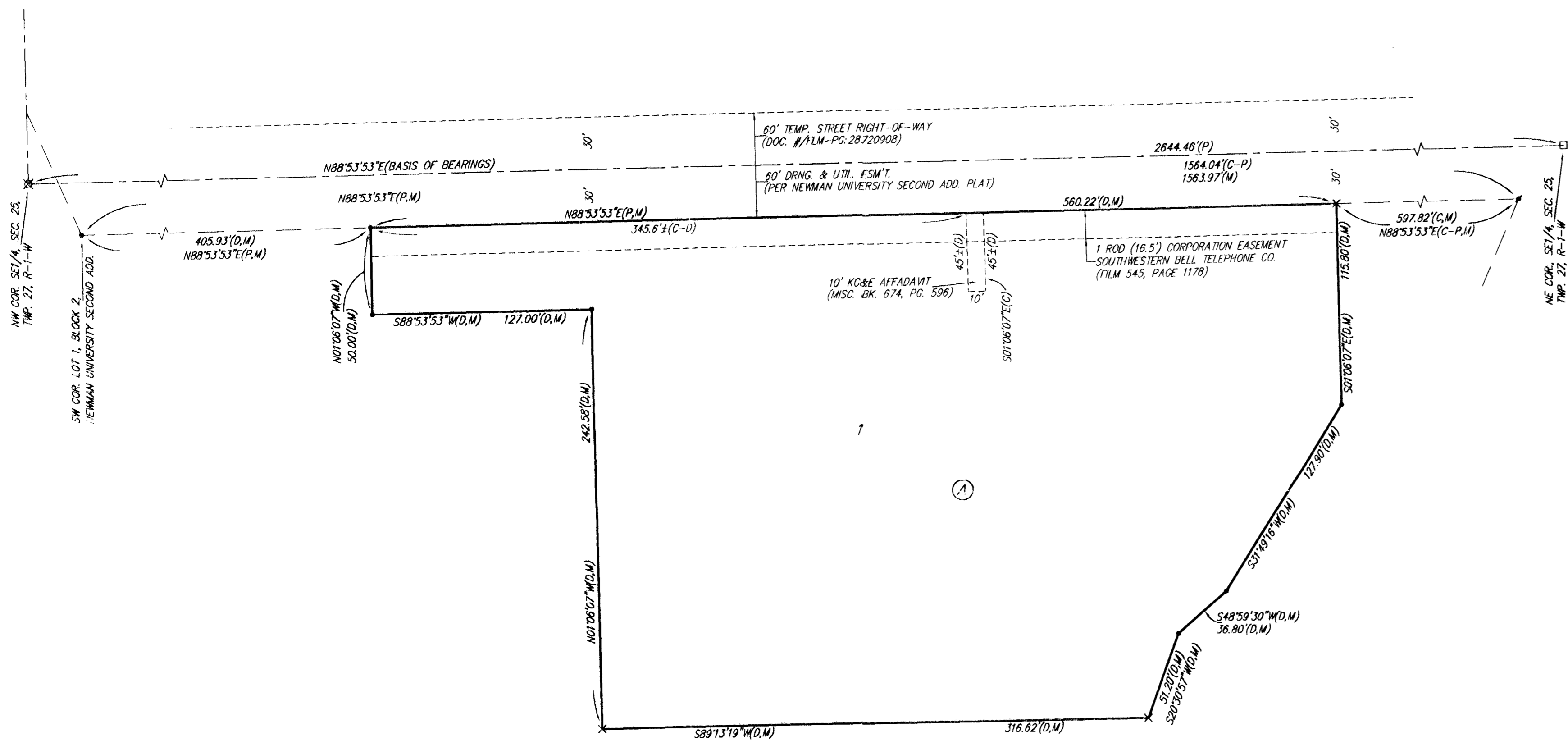


NEWMAN UNIVERSITY 3RD ADDITION

WICHITA, SEDGWICK COUNTY, KANSAS



- = #4 REBAR W/ "BAUGHMAN" CAP (SET)
 - = #4 REBAR W/ "BAUGHMAN" CAP (FOUND)
 - × = CROSS CUT (SET)
 - = CROSS CUT ON THIMBLE CAP IN THIMBLE (FOUND)
 - ⊗ = "V" NOTCH ON MANHOLE LID (SET)
- (P) = PLATTED
(M) = MEASURED
(D) = DESCRIBED
(C) = CALCULATED
(C-D) = CALCULATED PER DESCRIBED INFO.
(C-P) = CALCULATED PER PLATTED INFO.

NOTE:
A DRAINAGE PLAN HAS BEEN DEVELOPED FOR THIS SUBDIVISION AND IS ON FILE WITH THE CITY OF WICHITA, KANSAS. DRAINAGE INTENT SHALL REMAIN AS DEPICTED OR AS ADOPTED WITH THE APPROVAL OF THE CITY ENGINEER OF THE CITY OF WICHITA, KANSAS. NO OBSTRUCTIONS WHICH IMPEDS THE FLOW OF THIS DRAINAGE PLAN SHALL BE ALLOWED.

State of Kansas) SS We, Baughman Company, P.A., Surveyors in Sedgwick County) the aforesaid county and state do hereby certify that we have surveyed and platted "NEWMAN UNIVERSITY 3RD ADDITION", Wichita, Sedgwick County, Kansas and that the accompanying plat is a true and correct exhibit of the property surveyed, described as part of the SE1/4 of Sec. 25, Twp. 27-S, R-1-W of the 6th P.M., Sedgwick County, Kansas, and further described as follows: Commencing at the SW corner of Lot 1, Block 2, Newman University Second Addition, an Addition to Wichita, Sedgwick County, Kansas; thence N88°53'53"E along the south line of said Lot 1, 405.93 feet for a point of beginning; thence continuing N88°53'53"E along the south line of said Lot 1, 560.22 feet; thence S01°06'07"E, 115.80 feet; thence S31°49'16"W, 127.90 feet; thence S48°59'30"W, 36.80 feet; thence S20°30'57"W, 51.20 feet; thence S89°13'19"W, 316.62 feet; thence N01°06'07"W, 242.58 feet; thence S88°53'53"W, 127.00 feet; thence N01°06'07"W, 50.00 feet to the point of beginning.

Existing public easements and dedications being vacated by virtue of K.S.A. 12-512(b).
All being situated in the SE1/4 of Sec. 25, Twp. 27-S, R-1-W of the 6th P.M., Sedgwick County, Kansas

Baughman Company, P.A.

Michael G. Conrey, Surveyor

Know all men by these presents that we, the undersigned, have caused the land in the surveyors certificate to be platted into a Lot and a Block to be known as "NEWMAN UNIVERSITY 3RD ADDITION", Wichita, Sedgwick County, Kansas.

Newman University Inc., a Kansas not-for-profit corporation

Harry Pope, Vice-President of Operations

State of Kansas) SS The foregoing instrument acknowledged before me, this 2nd day of June, 2006, by Harry Pope, Vice-President of Operations for Newman University, Inc., a Kansas not-for-profit corporation, on behalf of the not-for-profit corporation.

Tracy L. McGarvey, Notary Public
My App't. Exp. August 14, 2008

We, the undersigned holders of a mortgage on the above described property, do hereby consent to this plat of "NEWMAN UNIVERSITY 3RD ADDITION", Wichita, Sedgwick County, Kansas.

Commerce Bank, N.A.

James H. Mai, VICE PRES.

State of Kansas) SS The foregoing instrument acknowledged before me, this 2nd day of June, 2006, by JAMES H. MAI, VICE PRESIDENT of Commerce Bank, N.A., on behalf of the bank.

Pamela J. Maurer, Notary Public
My App't. Exp. 09/21/07

This plat of "NEWMAN UNIVERSITY 3RD ADDITION", Wichita, Sedgwick County, Kansas has been submitted to and approved by the Wichita-Sedgwick County Metropolitan Area Planning Commission, Wichita, Kansas.

Dated this _____ day of _____, 2006.
Wichita-Sedgwick County Metropolitan Area Planning Commission

_____, Chair
Harold L. Warner, Jr.

_____, Secretary
John L. Schlegel

This plat approved and all dedications shown hereon accepted by the City Council of the City of Wichita, Kansas, this _____ day of _____, 2006.

_____, Mayor
Carlos Mayans

_____, City Clerk
Karen Sublett

Reviewed in accordance with K.S.A. 58-2005 on this _____ day of _____, 2006.

Tricia L. Robello, L.S. #1246
Deputy County Surveyor
Sedgwick County, Kansas

Entered on transfer record this _____ day of _____, 2006.

_____, County Clerk
Don Grace

State of Kansas) SS This is to certify that this plat has been filed for record in the office of the Register of Deeds, this _____ day of _____, 2006, at _____ o'clock _____ M; and is duly recorded.

_____, Register of Deeds
Bill Meek

_____, Deputy
Tonya Buckingham