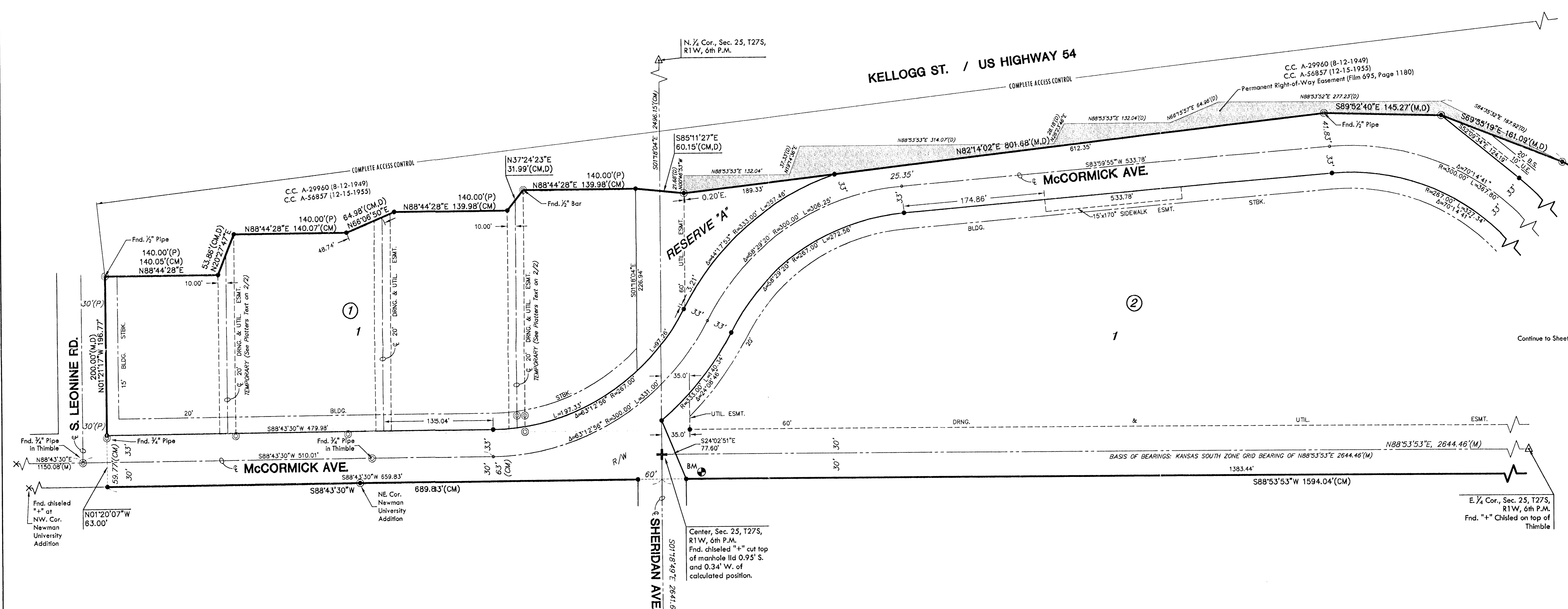


9-13-05

# FINAL PLAT

## NEWMAN UNIVERSITY SECOND ADDITION

AN ADDITION TO WICHITA, SEDGWICK COUNTY, KANSAS



Continue to Sheet 2/2

### LEGEND

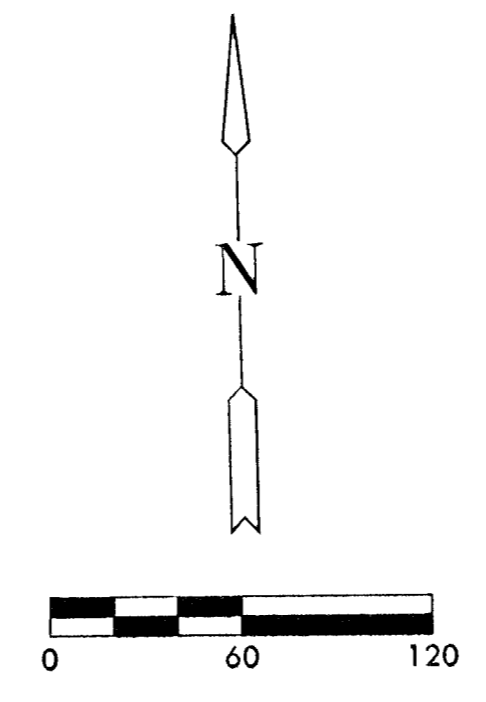
- △ = Section Corner Monument Found
- ⊙ = Found 1/2" Rebar w/ Baughman Id cap
- ⊙ = Found Survey Monument (see annotation for type)
- = Set 3/8" Rebar w/ MKEC CLS 39 Id. cap
- (M) = Measured
- (D) = Described
- (CM) = Calculated from measured
- ▨ = Street Dedication (width varies)

Center, Sec. 25, T27S, R1W, 6th P.M.  
 Fnd. chiseled "A" cut top of manhole lid 0.95' S. and 0.34' W. of calculated position.

S. 1/4 Cor., Sec. 25, T27S, R1W, 6th P.M.  
 Set 3/8" Rebar w/ MKEC CLS 39 Id cap

### BENCH MARK

BM ● COW Bench Mark - SE corner of intersection Sheridan and McCormick lying 24' E. of centerline and 46.3' S. of centerline.  
 Elev. = 1299.76 (NGVD) 112.36 (City)



*Gregory J. Allison*  
 8/15/05  
 GREGORY J. ALLISON  
 LICENSED  
 LS-1257  
 KANSAS  
 LAND SURVEYOR



8/15/2005 3:06:30 PM CDT  
 8/15/2005 3:06:30 PM CDT