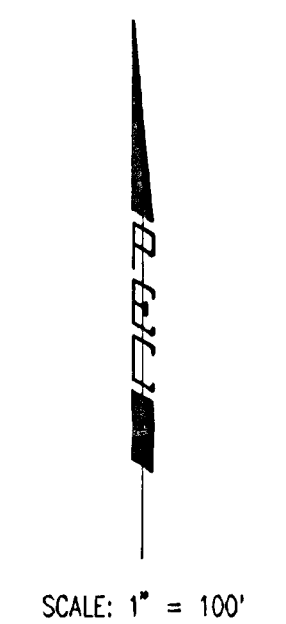
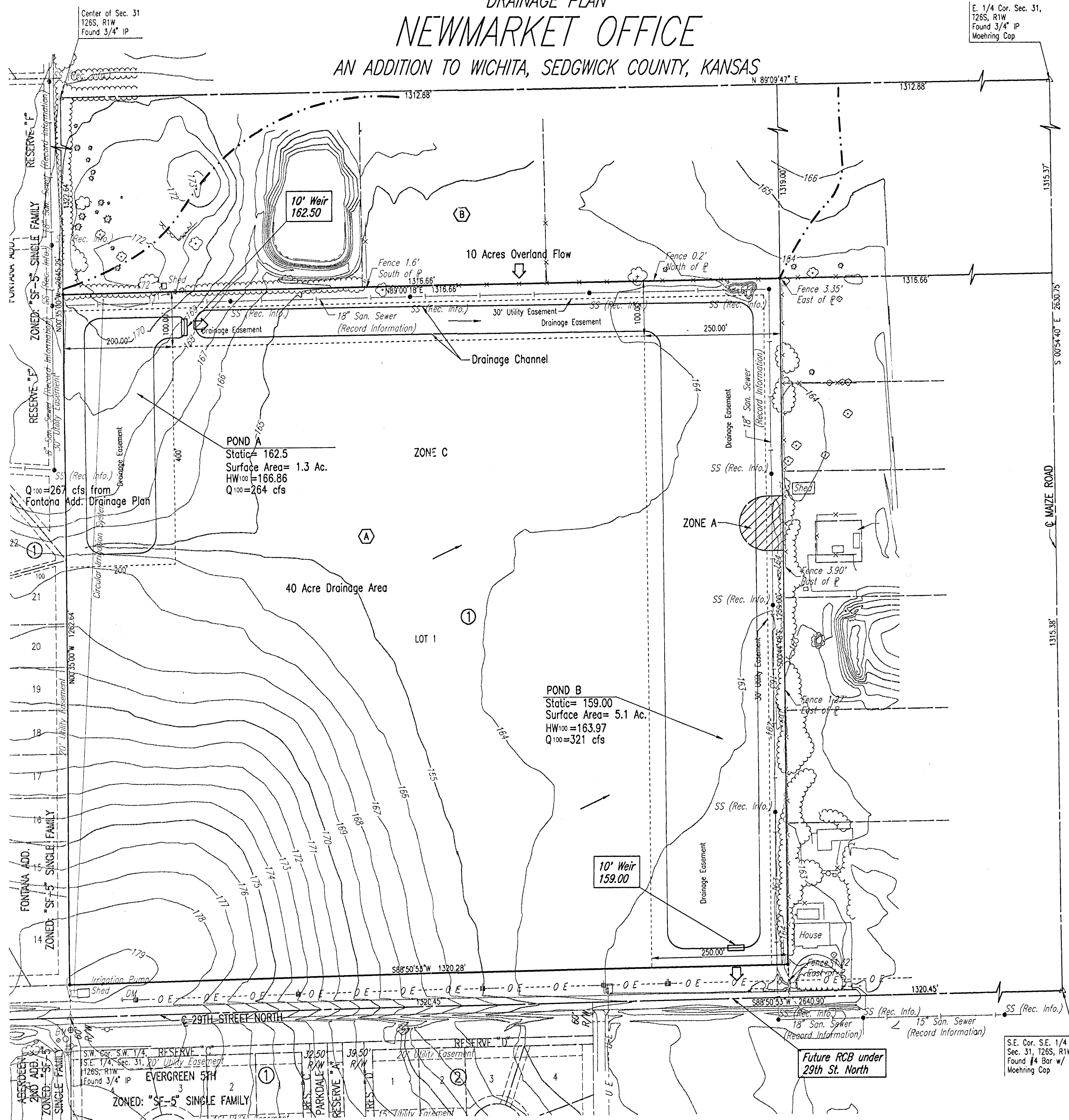


DRAINAGE PLAN
NEWMARKET OFFICE
 AN ADDITION TO WICHITA, SEDGWICK COUNTY, KANSAS

E. 1/4 Cor. Sec. 31,
 T26S, R1W
 Found 3/4" IP
 Moehring Cap



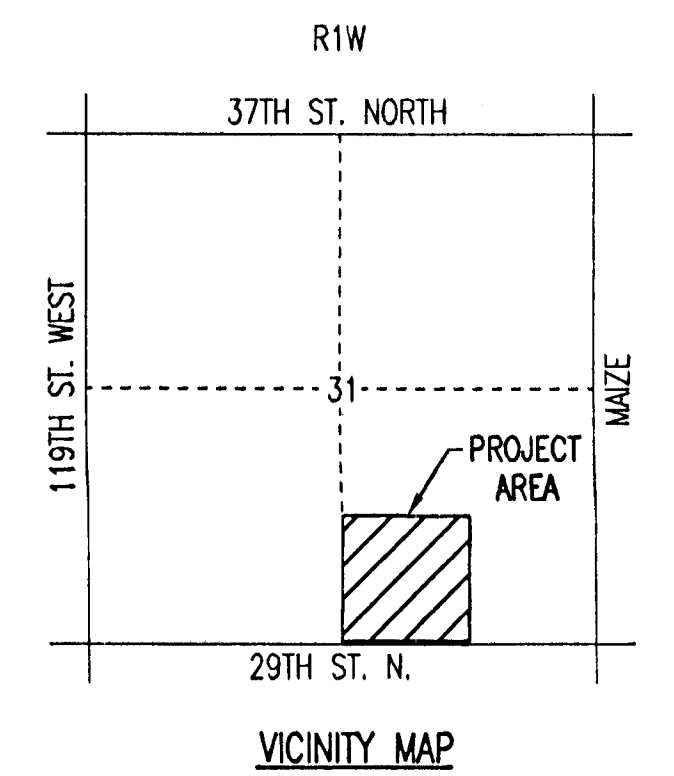
SCALE: 1" = 100'

LEGEND

- 3A BASIN IDENTIFIER
 - MAJOR BASIN BOUNDARY
 - ⇨ EMERGENCY STORM WATER FLOW
 - STORM WATER FLOW
- SEE SUPPORTING CALCULATIONS FOR HYDROLOGY

POND A
 Static= 162.5
 Surface Area= 1.3 Ac.
 HW₁₀₀=166.86
 Q₁₀₀=264 cfs

POND B
 Static= 159.00
 Surface Area= 5.1 Ac.
 HW₁₀₀=163.97
 Q₁₀₀=321 cfs



S.E. Cor. S.E. 1/4
 Sec. 31, T26S, R1W
 Found #4 Bar w/
 Moehring Cap