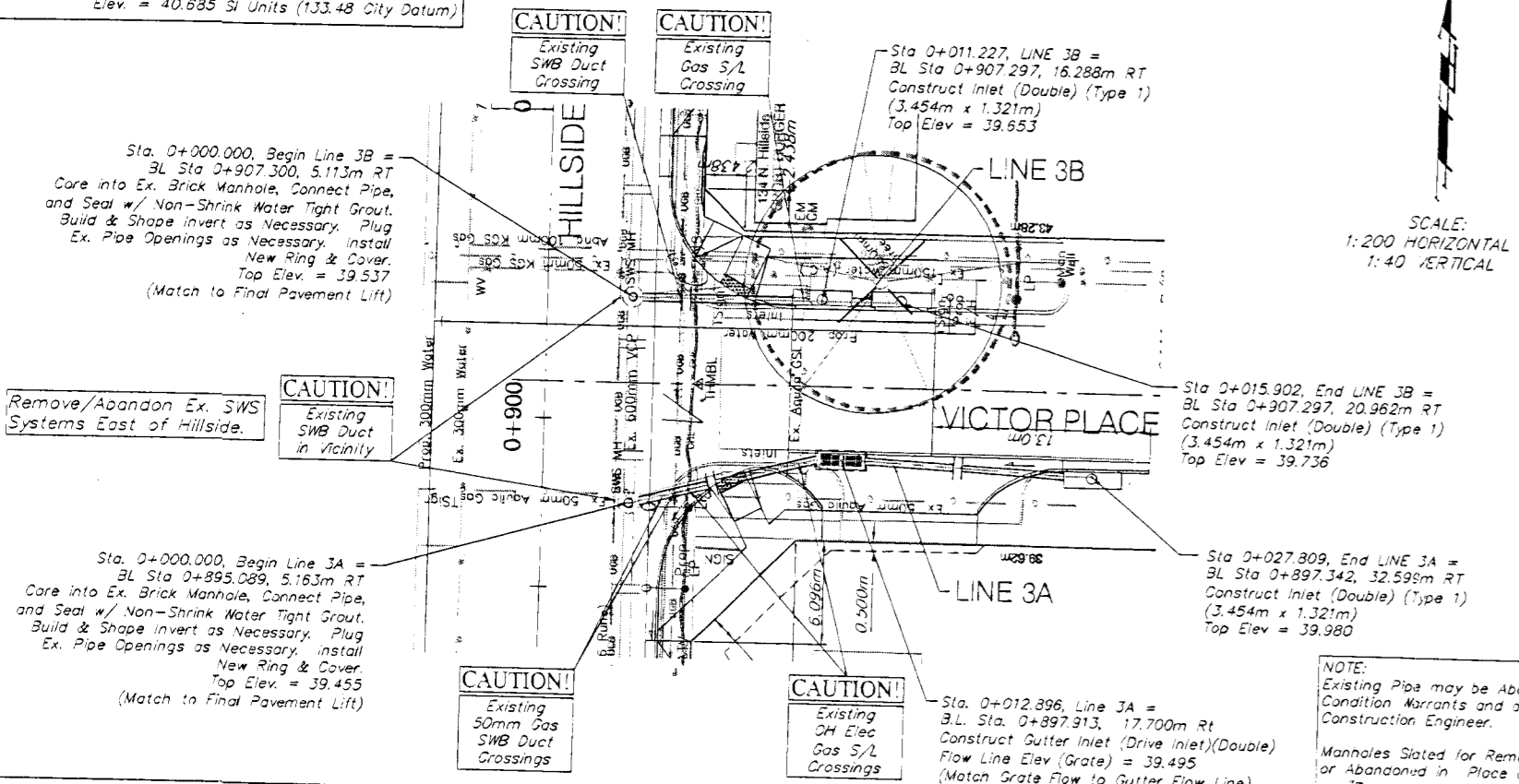
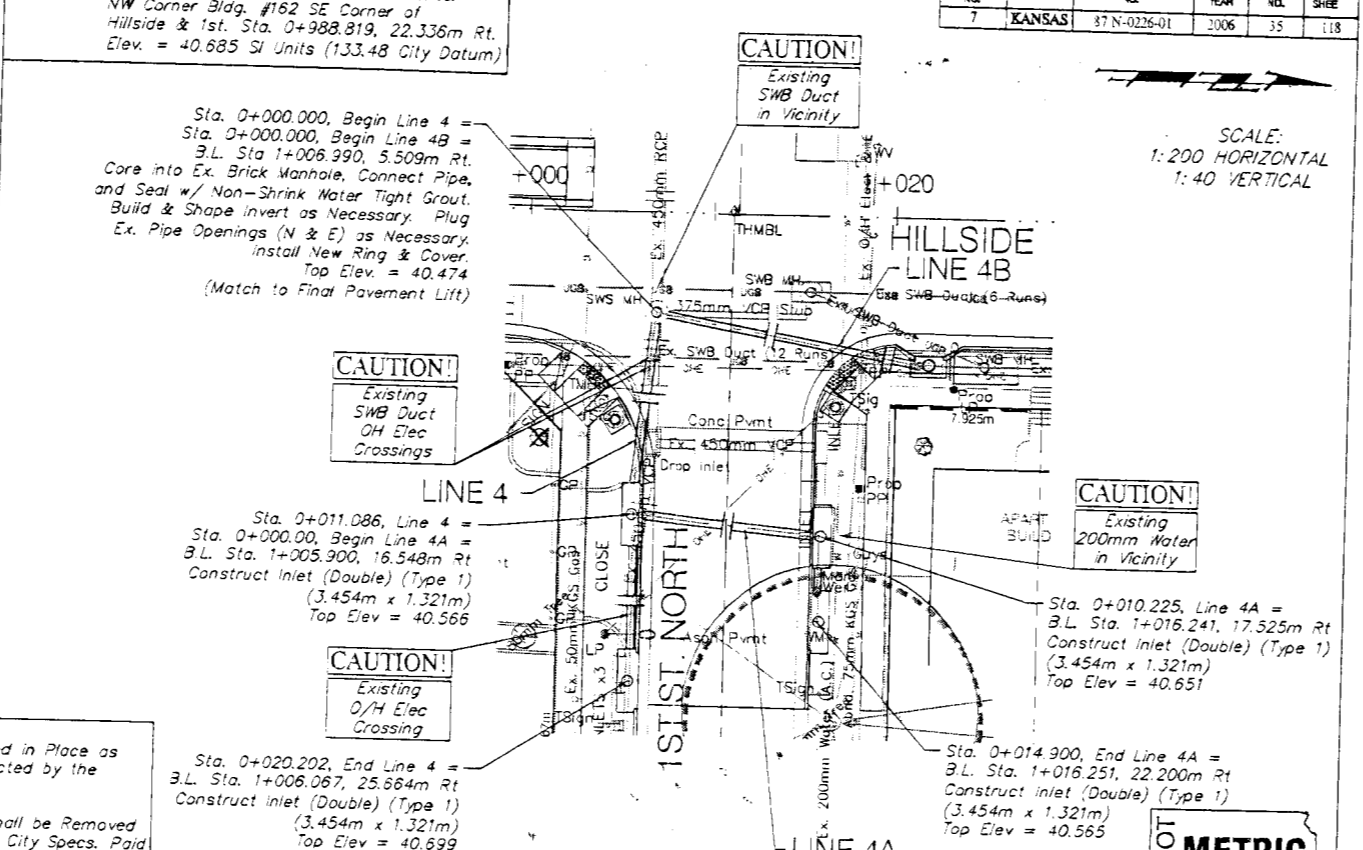


BENCHMARK
 BM #5 - Top of Brick NW Corner of Brick Planter
 NW Corner Blg. #162 SE Corner of
 Hillside & 1st. Sta. 0+988.819, 22.336m Rt.
 Elev. = 40.685 SI Units (133.48 City Datum)



BENCHMARK
 BM #5 - Top of Brick NW Corner of Brick Planter
 NW Corner Blg. #162 SE Corner of
 Hillside & 1st. Sta. 0+988.819, 22.336m Rt.
 Elev. = 40.685 SI Units (133.48 City Datum)

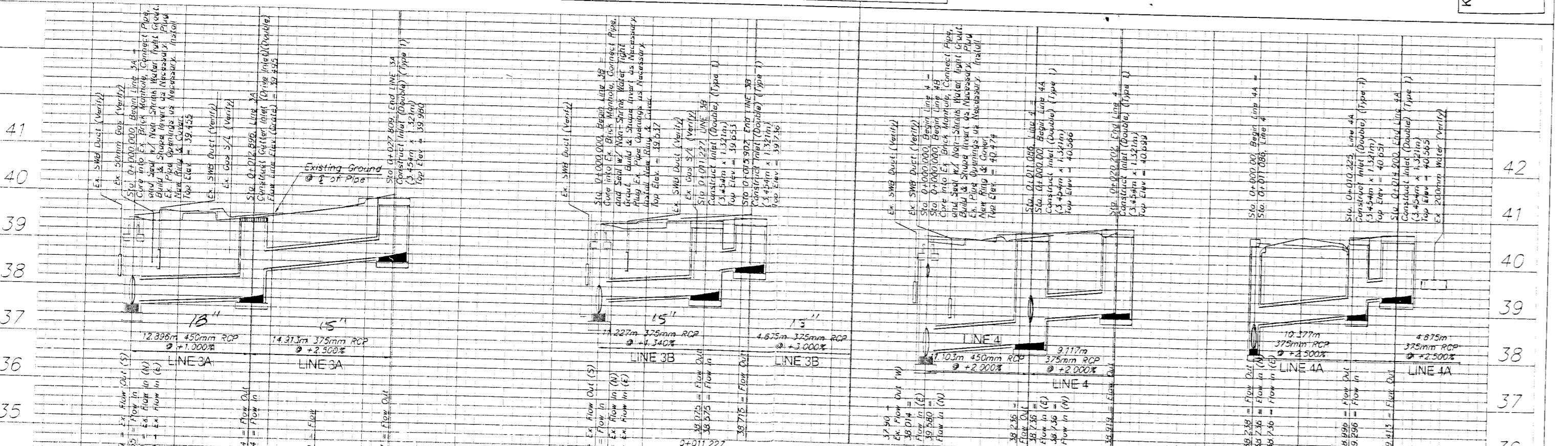


FED. ROAD DIST. NO.	STATE	PROJECT NO.	FISCAL YEAR	SHEET NO.	TOTAL SHEETS
7	KANSAS	87-N-0226-01	2006	35	118

SCALE:
 1:200 HORIZONTAL
 1:40 VERTICAL

KDOT METRIC

NOTE:
 Existing Pipes may be Abandoned in Place as
 Condition Warrants and as Directed by the
 Constructor Engineer.
 Manholes Slated for Removal shall be Removed
 or Abandoned in Place as per City Specs. Paid
 as 'Removal of Existing Structures'



DESIGN	DRAWN	APPROVED	DATE	SCALE	ENGINEERING DIRECTOR	SHEET NAME
STAFF	STAFF	JFB	May 2006	Noted	R. Hillside Land/Inc	472-33882

STORM WATER SEWER PLAN & PROFILE
 LINES 3A, 3B, 4, & 4A
 CAPITAL IMPROVEMENT PROJECT
 HILLSIDE LAND/INC.

BAUGHMAN COMPANY, P.A.
 ENGINEERING, SURVEYING, & PLANNING
 116-282-727 • 315 S.L.S. • 1001 N. WYOMING ST. #201

SHEET 35
 OF 118