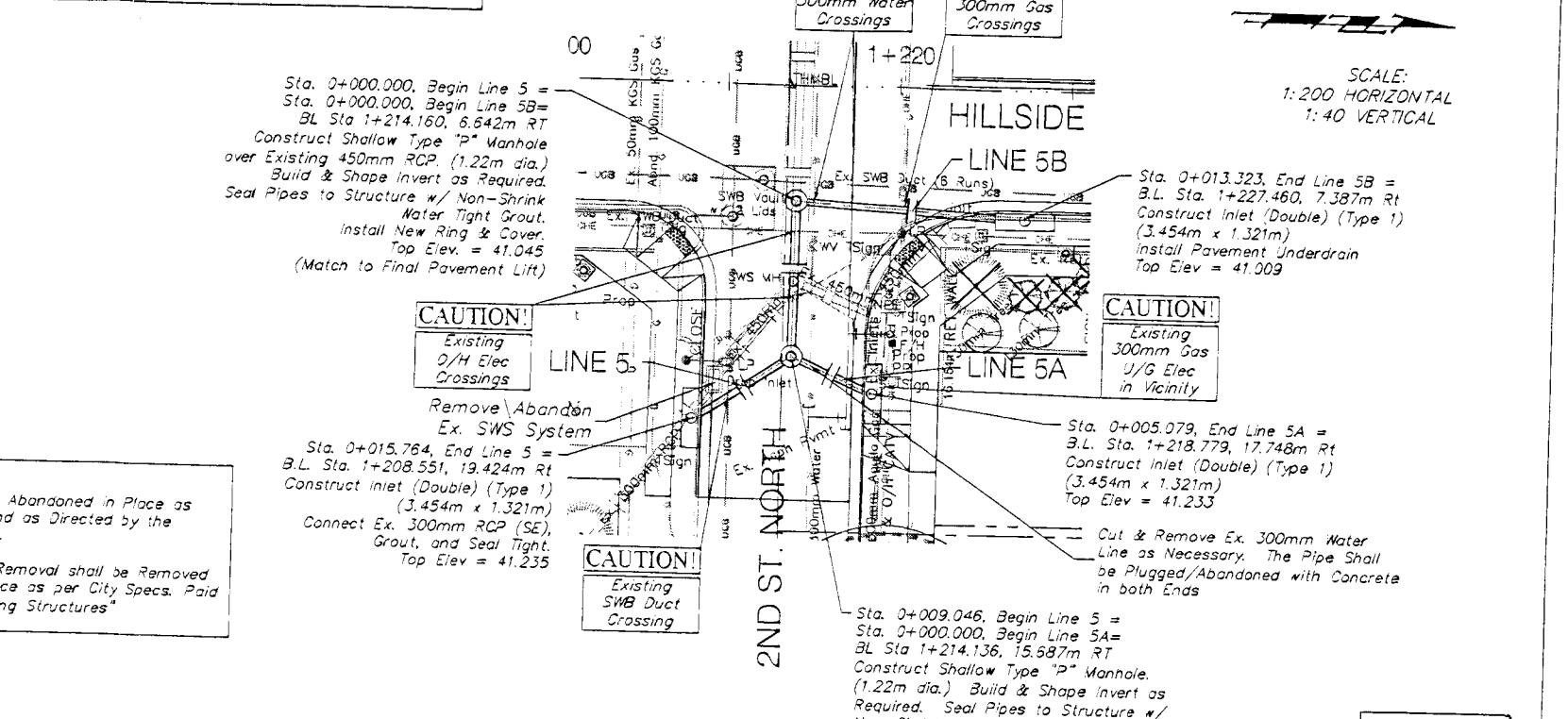
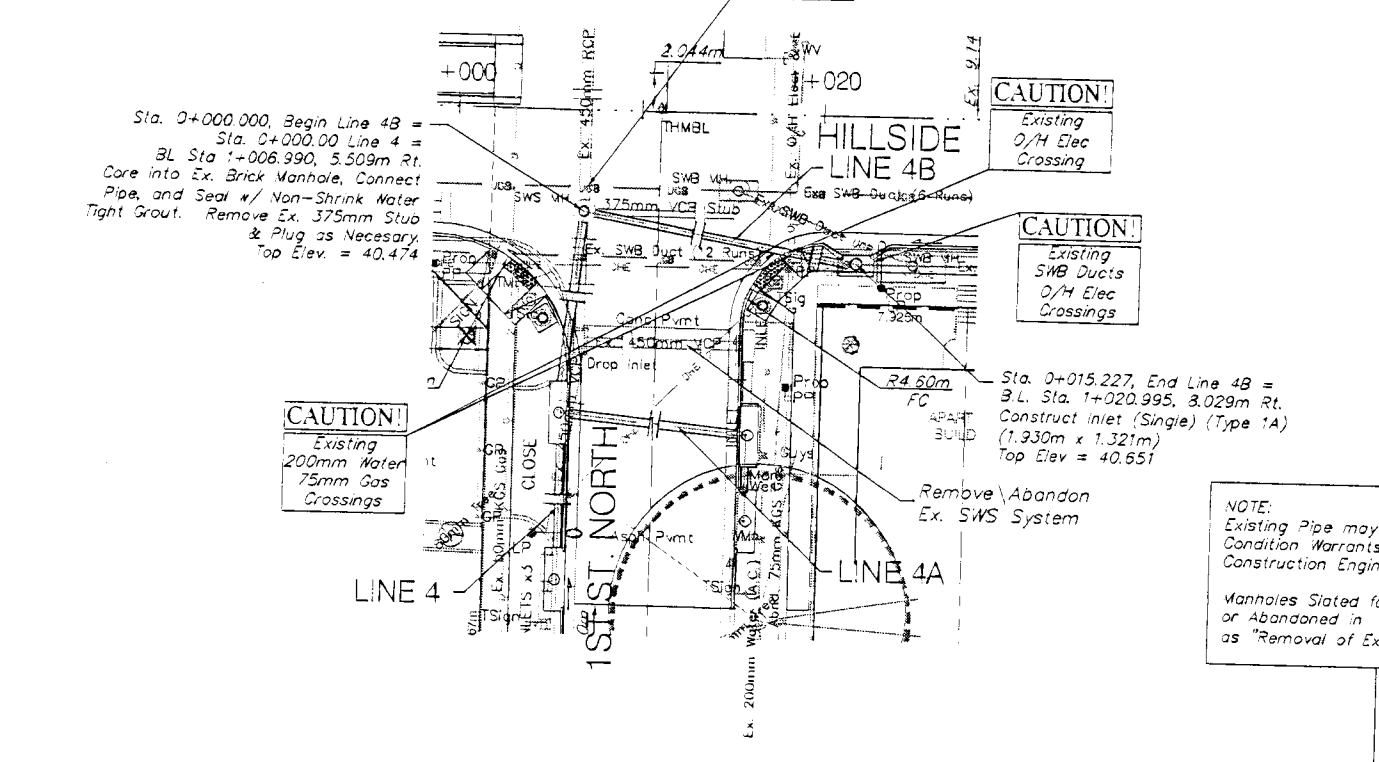


BENCHMARK
 BM #5 - Top of Brick NW Corner of Brick Planter
 NW Corner Bldg. #162 SE Corner of
 Hillside & 1st. Sta. 0+988.919, 22.336m Rt.
 Elev. = 40.685 SI Units (133.48 City Datum)

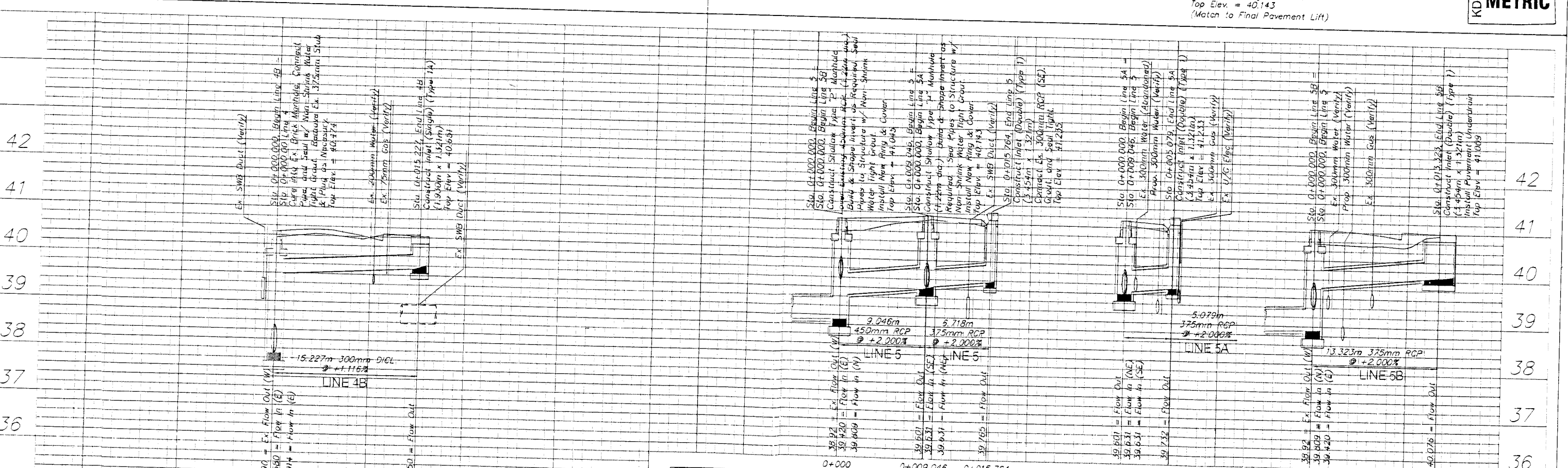
BENCHMARK
 BM #6 - NW Corner of Walk North of Fire Sta. #5
 SW Corner of Hillside & 2nd
 Sta. 1+204.388, 19.744m Lt.
 Elev. = 40.706 SI Units (133.55 City Datum)

FED. ROAD DIST. NO.	STATE	PROJECT NO.	FISCAL YEAR	SHEET NO.	TOTAL SHEETS
7	KANSAS	87-N-0226-01	2006	36	118



SCALE:
 1:200 HORIZONTAL
 1:40 VERTICAL

KDOT METRIC



PROJECT NUMBER	SHEET NAME	ENGINEERING DIRECTOR
472-33862	SWS06	F. Hillside Land Use

DESIGN	DRAWN	APPROVED	DATE	SCALE	SHEET NO.	TOTAL SHEETS
STAFF	STAFF	JFB	May 2006	Noted	36	118

DATE	BY	DESCRIPTION
01-13-09	4	REVISED

PROJECT	DESCRIPTION
CAPITAL IMPROVEMENT PROJECT	STORM WATER SEWER PLAN & PROFILE
	LINES 4B, 5, 5A, & 5B

COMPANY	ADDRESS	PHONE	FAX	WEBSITE
BAUGHMAN COMPANY, P.A.	116-262-7271	315-815-1111	1-800-745-3211	WWW.BAUGHMANCOMPANY.COM