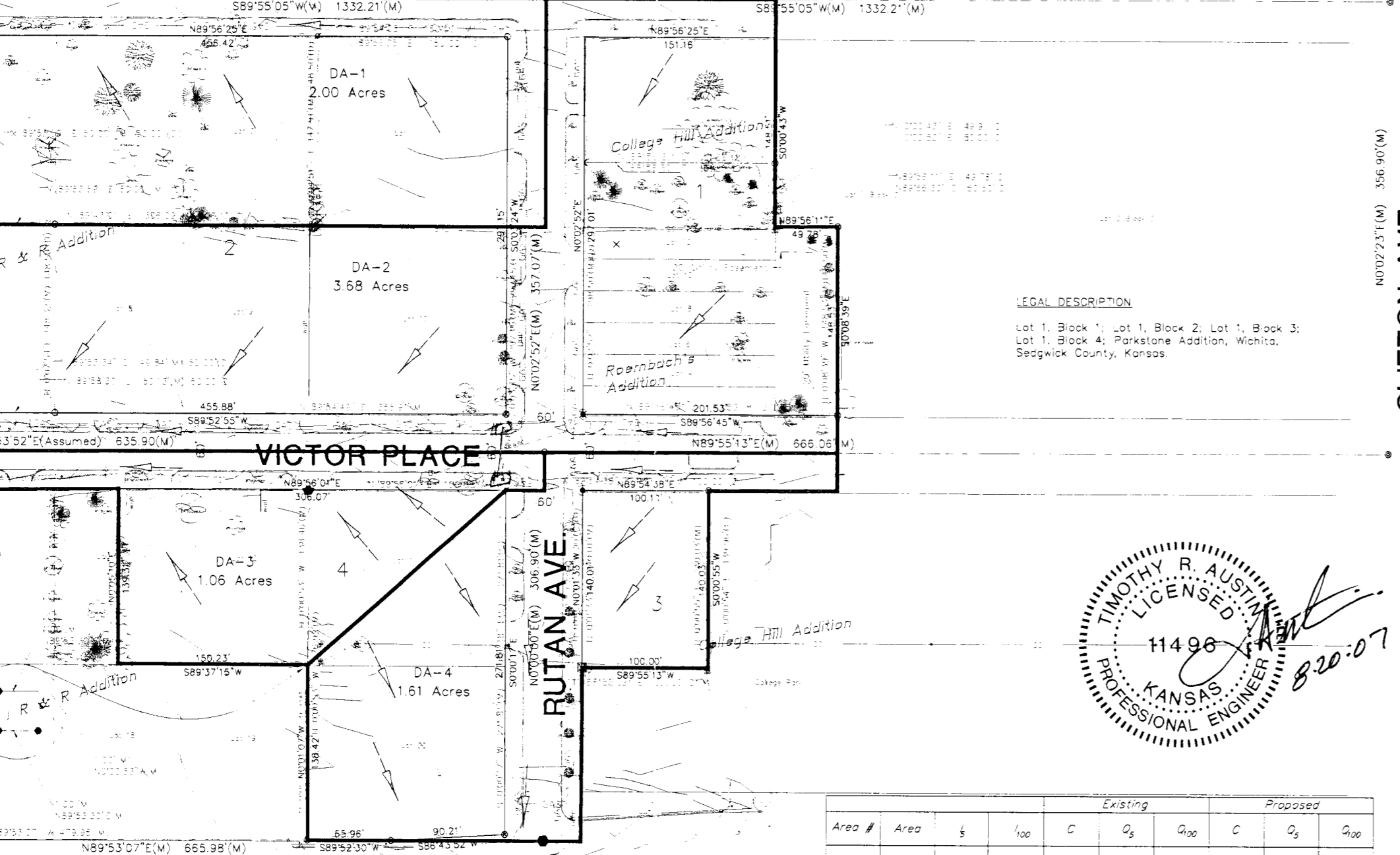


HILLSIDE AVE.

S.W. Cor., N.W. 1/4
Sec. 23-T27S-R1E
3/4" Pipe in Thimble

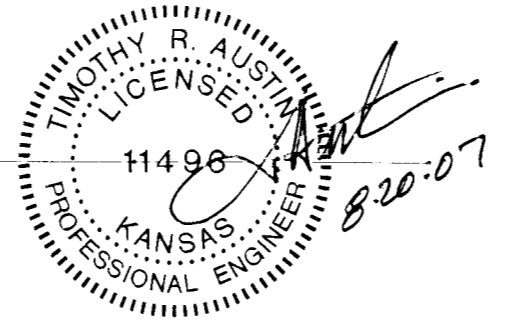


FIRST STREET



LEGAL DESCRIPTION

Lot 1, Block 1; Lot 1, Block 2; Lot 1, Block 3;
Lot 1, Block 4; Parkstone Addition, Wichita,
Sedgwick County, Kansas.



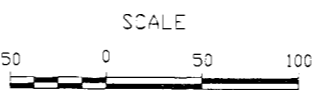
Area #	Area	S	I ₁₀₀	C	Existing			Proposed		
					C	Q _s	Q ₁₀₀	C	Q _s	Q ₁₀₀
1	2.00	4.56	7.37	0.65	5.93	9.58	0.85	7.75	12.53	
2	3.68	4.56	7.37	0.82	13.76	22.24	0.85	14.26	23.05	
3	1.06	4.56	7.37	0.85	4.11	6.64	0.85	4.11	6.64	
4	1.61	4.56	7.37	0.85	6.24	10.09	0.85	6.24	10.09	
Totals	8.35				30.04	48.55		32.36	52.31	

NOTES:
1. Determination of Q's was made using the rational method.

**DRAINAGE PLAN FOR
PARKSTONE ADDITION**
TO WICHITA, SEDGWICK COUNTY, KANSAS
LOCATED IN THE NW 1/4, SECTION 23, T27S, R1E OF THE 6 P.M.

DATE OF PREPARATION 08/20/07

CLIFTON AVE.



- LEGEND**
- ▲ Section corner found
 - Point found
 - 5/8" bar w/POE cap set
 - (M) Measured distance
 - (CM) Calculated from Measured distance
 - (D) Deed distance
 - ⊙ FD PK Nail
 - ⊗ FD X cut w/PK Nail Existing
 - ⊗ FB "X" cut in conc.
 - FD 1/2" IP w/L5885 cap
 - ⊗ FD "V" cut in conc.
 - FD 1/2" Pipe
 - ⊗ FD 3/4" Pipe
 - Set PK nail
 - ⊗ Set 5/8" Rebar w/LS1294 Cap
 - ⊙ C.O.W. MONUMENTS
 - < Set "V" cut in conc.

