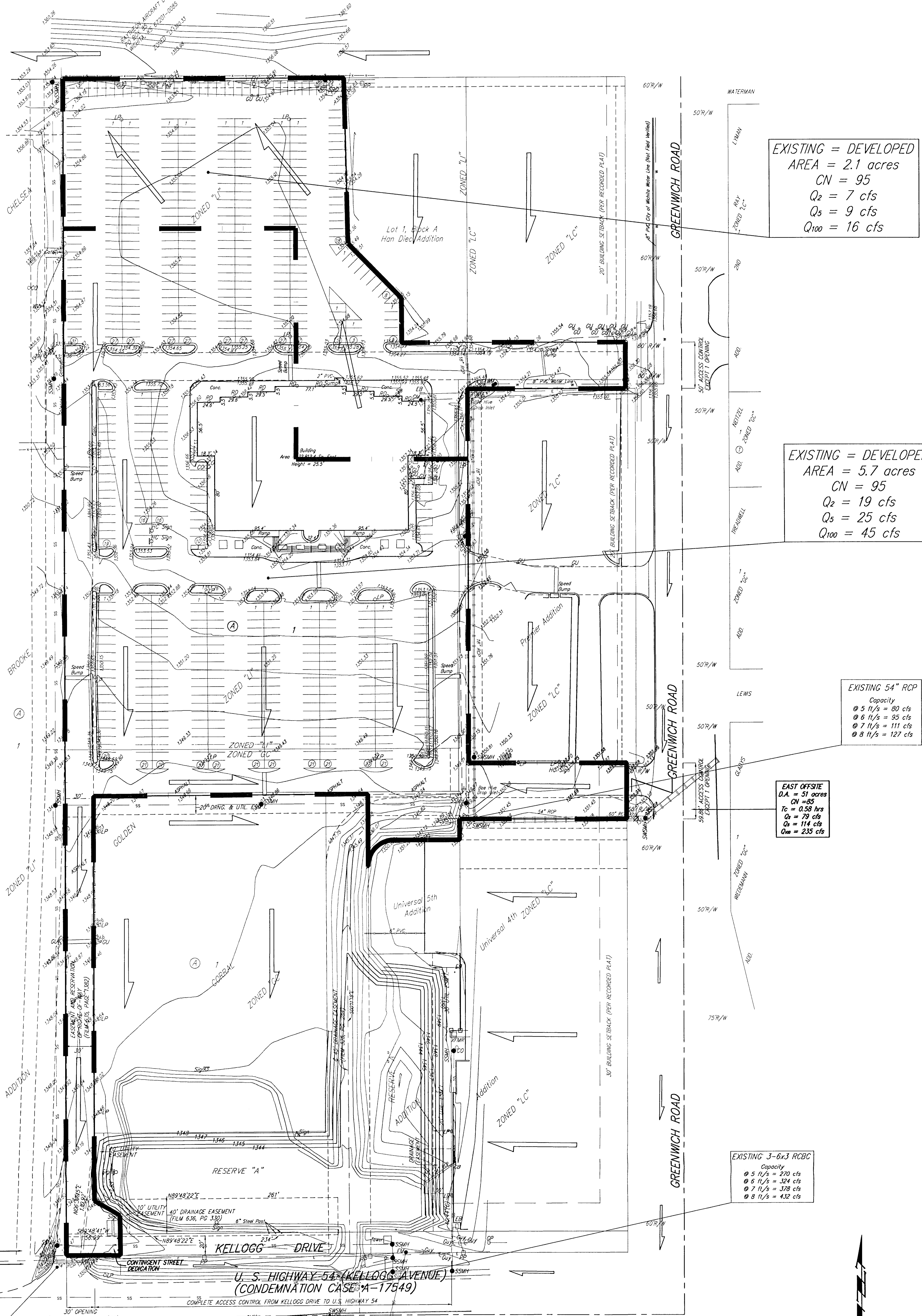


# DRAINAGE PLAN

## PALACE EAST ADDITION

### WICHITA, SEDGWICK COUNTY, KANSAS



EXISTING = DEVELOPED  
 AREA = 2.1 acres  
 CN = 95  
 Q<sub>2</sub> = 7 cfs  
 Q<sub>5</sub> = 9 cfs  
 Q<sub>100</sub> = 16 cfs

EXISTING = DEVELOPED  
 AREA = 5.7 acres  
 CN = 95  
 Q<sub>2</sub> = 19 cfs  
 Q<sub>5</sub> = 25 cfs  
 Q<sub>100</sub> = 45 cfs

EXISTING 54" RCP  
 Capacity  
 @ 5 ft/s = 80 cfs  
 @ 6 ft/s = 95 cfs  
 @ 7 ft/s = 111 cfs  
 @ 8 ft/s = 127 cfs

EAST OFFSITE  
 D.A. = 51 acres  
 CN = 85  
 T<sub>c</sub> = 0.58 hrs  
 Q<sub>2</sub> = 79 cfs  
 Q<sub>5</sub> = 114 cfs  
 Q<sub>100</sub> = 235 cfs

EXISTING 3-6x3 RCBC  
 Capacity  
 @ 5 ft/s = 270 cfs  
 @ 6 ft/s = 324 cfs  
 @ 7 ft/s = 378 cfs  
 @ 8 ft/s = 432 cfs

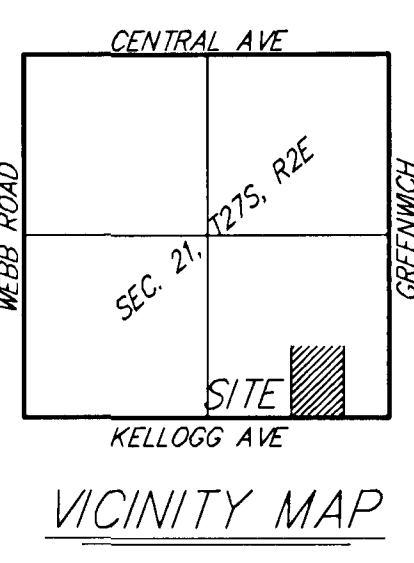
24" CMP 5' HEAD  
 Capacity of CMP with 5' Head  
 T<sub>c</sub> = 0.25 hrs  
 Q<sub>2</sub> = 9 cfs  
 Q<sub>5</sub> = 11 cfs  
 Q<sub>100</sub> = 20 cfs

WEST OFFSITE  
 D.A. = 18 acres  
 CN = 77  
 T<sub>c</sub> = 0.40 hrs  
 Q<sub>2</sub> = 24 cfs  
 Q<sub>5</sub> = 38 cfs  
 Q<sub>100</sub> = 90 cfs

EXISTING 24" RCP  
 Capacity  
 @ 5 ft/s = 16 cfs  
 @ 6 ft/s = 19 cfs  
 @ 7 ft/s = 22 cfs  
 @ 8 ft/s = 25 cfs

OWNER:  
 DNEAS ASSOCIATES  
 PO BOX 102360  
 WICHITA, KS 67278  
 685-3773

BENCHMARK:  
 CITY OF WICHITA BENCHMARK - SE CORNER OF INTERSECTION OF GREENWICH AND KELLOGG, NW CORNER OF LIGHT POLE BASE, 48.00' MARK OF 12" OR 18" MANHOLE, 48.70' S OF C OF TRAFFIC SIGNAL MANHOLE IN KELLOGG MEDIAN IN WELLSVILLE DRIVE, 70.50' E OF BACK OF E CURB ON E. SIDE OF MEDIAN IN GREENWICH ROAD, ELEV. = 164.78 CITY DATUM (1352.18 NGVD)



OFFSITE POND DATA  
 POND RECONFIGURATION PROPOSED IN GOLDEN CORRAL ADDITION

PROPOSED POND (Static = 1343.6)				EXISTING POND (Static = 1343.6)			
STAGE	INFLOW	OUTFLOW	ELEVATION	STAGE	INFLOW	OUTFLOW	ELEVATION
2 ft	127 cfs	106 cfs	1343.6	2 ft	124 cfs	107 cfs	1343.6
3 ft	161 cfs	136 cfs	1345.9	3 ft	160 cfs	136 cfs	1345.0
100 ft	381 cfs	331 cfs	1347.4	100 ft	378 cfs	331 cfs	1347.4

PROPOSED POND		EXISTING POND	
ELEVATION	AREA (acres)	ELEVATION	AREA (acres)
1343	1.12	1343	0.93
1346	1.32	1346	1.07
1347	1.48	1347	1.30
1348	1.81	1348	2.30

NOTE: There is no FEMA Floodplain or Floodway located on this property as of September 17, 2006.