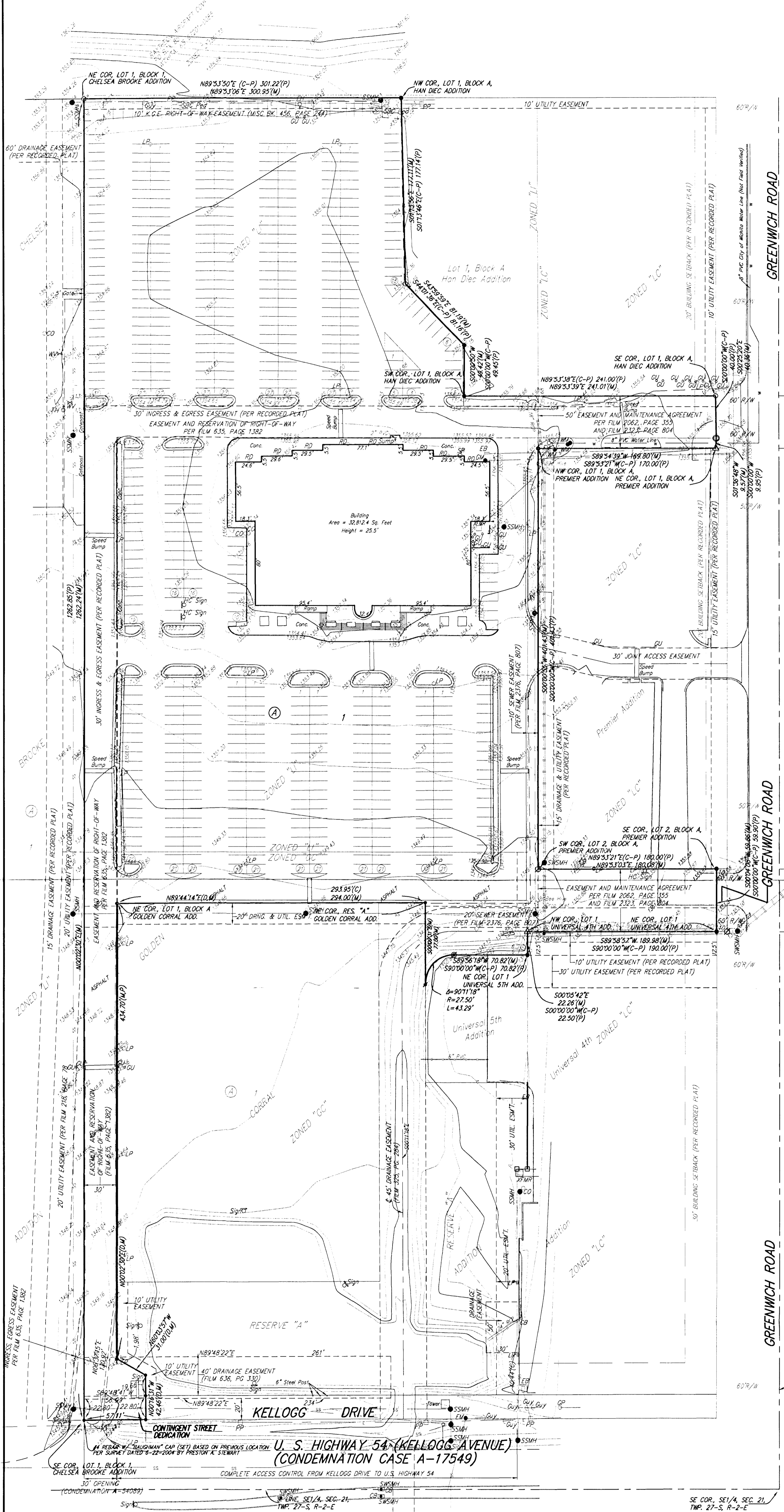


ONE-STEP FINAL PLAT
PALACE EAST ADDITION
 WICHITA, SEDGWICK COUNTY, KANSAS



State of Kansas) SS
 Sedgwick County) We, Baughman Company, P.A., Surveyors in
 aforesaid county and state do hereby certify that we have surveyed and
 platted "PALACE EAST ADDITION, Wichita, Sedgwick County, Kansas and
 that the accompanying plat is a true and correct exhibit of the property
 surveyed, described as a replat of Lot 2, Block 1, David's East 1st
 Addition to Wichita, Sedgwick County, Kansas, EXCEPT that part platted as
 Chelsea Brook Addition, Wichita, Sedgwick County, Kansas, AND EXCEPT
 that part platted as Han Dec Addition, Wichita, Sedgwick County, Kansas,
 TOGETHER with the E1/2, of the SE1/4 of the SE1/4 of Section 21, Twp.
 27-S, R-2-E of the 6th P.M., Sedgwick County, Kansas, EXCEPT that
 part platted as David's East 1st Addition to Wichita, Sedgwick County,
 Kansas, AND EXCEPT that part platted as Premier Addition, Wichita,
 Sedgwick County, Kansas, AND EXCEPT that part platted as Universal 4th
 Addition, Wichita, Sedgwick County, Kansas, AND EXCEPT that part
 platted as Golden Corral Addition, Wichita, Sedgwick County, Kansas,
 AND EXCEPT that part condemned for U.S. Highway 54 right-of-way in
 Case A-17549.

Existing public easements and dedications
 being vacated by virtue of K.S.A. 12-512(b).
 Baughman Company, P.A.

Michael G. Conrey, Surveyor

Know all men by these presents that we,
 the undersigned, have caused the land in the surveyors certificate to be
 platted into a Lot, a Block, and a Street, to be known as "PALACE EAST
 ADDITION", Wichita, Sedgwick County, Kansas. The utility easements are
 hereby granted as indicated for the construction and maintenance of all
 public utilities. The drainage and utility easement is hereby granted as
 indicated for drainage purposes and for the construction and maintenance
 of all public utilities. The drainage easement is hereby granted as
 indicated for drainage purposes. The street is hereby dedicated to and
 for the use of the public. The Kellogg Drive contingent street dedication
 shall become effective in the event that the City of Wichita determines a
 need for the right-of-way for any street related purposes. The Kellogg
 Drive contingent street dedication shall be a covenant running with the
 land and shall be binding on all heirs and subsequent owners of all parts
 of said property covered by said contingent street dedication. Access
 controls shall be as depicted on the face of the plat and are hereby
 granted to the City of Wichita, Kansas. The Minimum Building Pad
 Elevations for the lowest opening to the structures shall be as indicated
 on the face of the plat.

Cinema Associates, a Kansas General Partnership
 William J. Warren, President of
 American Cinemas, Inc.

State of Kansas) SS
 Sedgwick County) The foregoing instrument acknowledged before
 me, this day of _____, 2006, by William J. Warren, President
 of American Cinemas, Inc., as Partner of Cinema Associates, a Kansas
 General Partnership, on behalf of the partnership.

My App't. Exp. _____, Notary Public

We, the undersigned holders of a mortgage on the
 above described property, do hereby consent to this plat of "PALACE
 EAST ADDITION", Wichita, Sedgwick County, Kansas.

INTRUST Bank, N.A., 1/A/a
 The First National Bank in Wichita

State of Kansas) SS
 Sedgwick County) The foregoing instrument acknowledged be-
 fore me, this day of _____, 2006, by
 of INTRUST Bank, N.A., 1/A/a The First National Bank
 in Wichita, on behalf of the bank.

My App't. Exp. _____, Notary Public

This plat of "PALACE EAST ADDITION", Wichita,
 Sedgwick County, Kansas has been submitted to and approved by the
 Wichita-Sedgwick County Metropolitan Area Planning Commission, Wichita,
 Kansas.
 Dated this day of _____, 2006.
 Wichita-Sedgwick County Metropolitan Area Planning Commission

Darrell A. Downing, Chair
 John L. Schlegel, Secretary

This plat approved and all dedications
 shown hereon accepted by the City Council of the City of Wichita,
 Kansas, this day of _____, 2006.

Carlos Mayans, Mayor
 Karen Sublett, City Clerk

Reviewed in accordance with K.S.A. 58-2005
 on this day of _____, 2006.

Tricia L. Robello, L.S. #1246
 Deputy County Surveyor
 Sedgwick County, Kansas

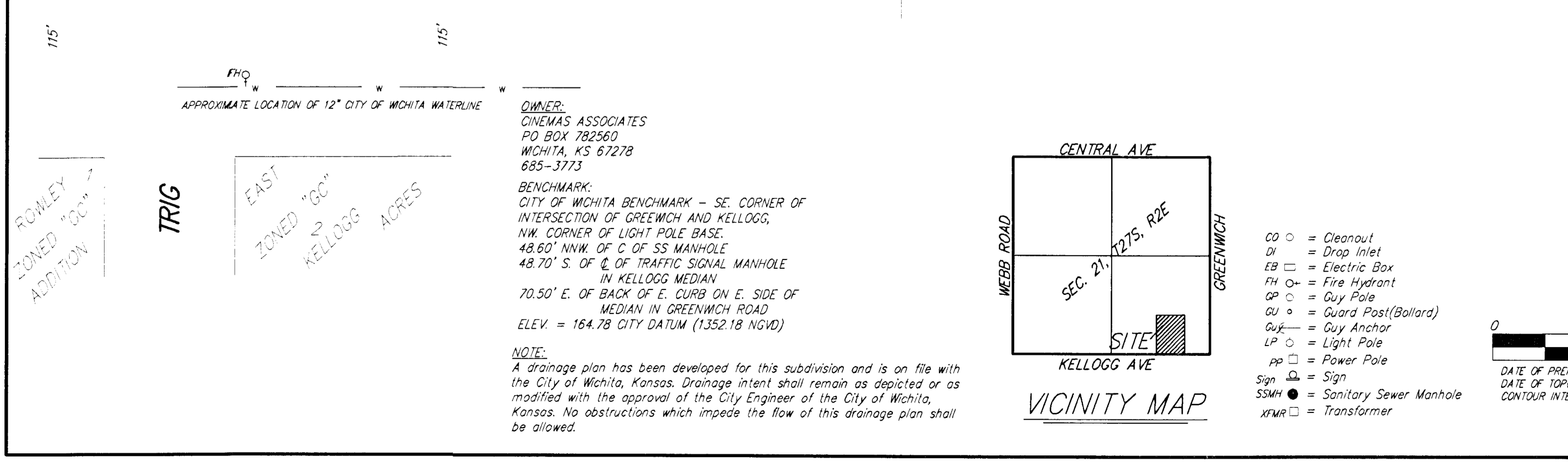
Entered on transfer record this day
 of _____, 2006.

Don Brace, County Clerk

State of Kansas) SS
 Sedgwick County) This is to certify that this plat has been
 filed for record in the office of the Register of Deeds, this day
 of _____, 2006 at _____ o'clock _____ M., and is duly recorded.

Bill Meek, Register of Deeds

Tonya Buckingham, Deputy



13 NOVEMBER 2006
 Baughman Company, P.A.
 315 Ellis St. Wichita, KS 67211 P 3162627211 F 3162620149
 ENGINEERS | SURVEYORS | PLANNERS | LANDSCAPE ARCHITECTS
 F:\PLAT\PALACEEASTADDITION\DWG\PALACEEASTD.WGK