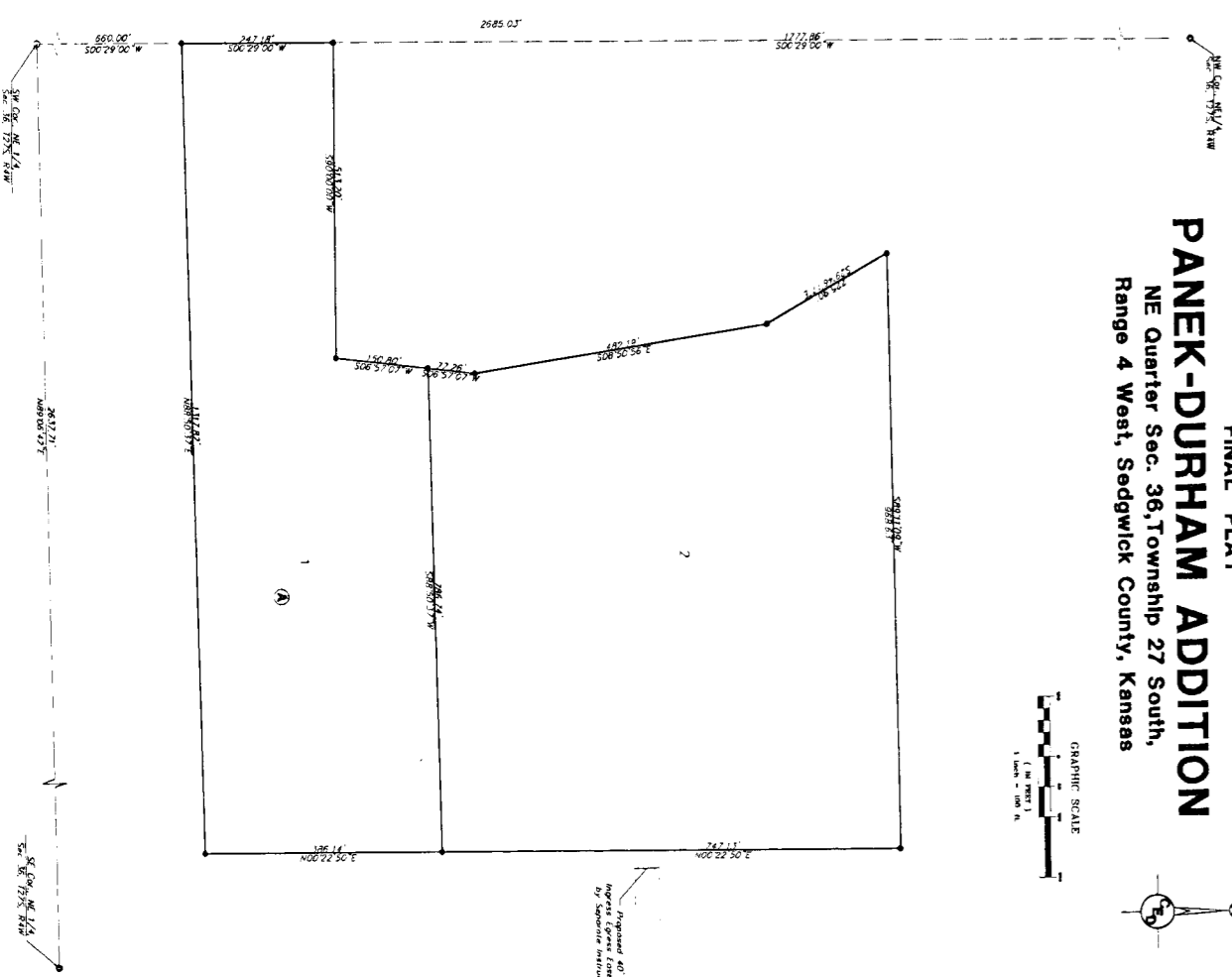


**FINAL PLAT**  
**PANEK-DURHAM ADDITION**  
 NE Quarter Sec. 36, Township 27 South,  
 Range 4 West, Sedgwick County, Kansas



Requester at  
 request of  
 request

State of Kansas )  
 Sedgwick County ) SS  
 I, \_\_\_\_\_, County Clerk, do hereby certify that, under the supervision of the undersigned, an accurate and correct plat of the above described land was surveyed and plotted and that the same is in accordance with the laws of this State and the rules and regulations of the Board of Surveyors of this State. Witness my hand and the seal of this County at \_\_\_\_\_, Kansas, this \_\_\_\_\_ day of \_\_\_\_\_, 2009.

State of Kansas )  
 Sedgwick County ) SS  
 I, \_\_\_\_\_, County Clerk, do hereby certify that, under the supervision of the undersigned, an accurate and correct plat of the above described land was surveyed and plotted and that the same is in accordance with the laws of this State and the rules and regulations of the Board of Surveyors of this State. Witness my hand and the seal of this County at \_\_\_\_\_, Kansas, this \_\_\_\_\_ day of \_\_\_\_\_, 2009.

By \_\_\_\_\_, Attorney at Law  
 My Atty's Exp. \_\_\_\_\_, 2009

By \_\_\_\_\_, Attorney at Law  
 My Atty's Exp. \_\_\_\_\_, 2009

**Legend**  
 1. \_\_\_\_\_  
 2. \_\_\_\_\_  
 3. \_\_\_\_\_  
 4. \_\_\_\_\_  
 5. \_\_\_\_\_  
 6. \_\_\_\_\_  
 7. \_\_\_\_\_  
 8. \_\_\_\_\_  
 9. \_\_\_\_\_  
 10. \_\_\_\_\_

Checked, Computed, and  
 Accuracy: 0.000000