

7-11-06

# PARADISE ACRES


an Addition to Sedgwick County, Kansas

State of Kansas) SS  
Sedgwick County)

We, Savoy Company, P.A., Surveyors in aforesaid county and state do hereby certify that, under the supervision of the undersigned, we have surveyed and platted "PARADISE ACRES", an Addition to Sedgwick County, Kansas and that the accompanying plat is a true and correct exhibit of the property surveyed, described as follows:

That part of the SW1/4 of Sec. 3, Twp. 28-S, R-2-E of the 6th P.M., Sedgwick County, Kansas described as commencing at the S.E. Corner thereof; thence S88°22'59"W, along the south line of said SW1/4, 330.10 feet for a place of beginning; thence S88°22'59"W, 332 feet; thence N00°37'20"W, parallel with the east line of said SW1/4, 670 feet; thence N88°22'59"E, 332 feet; thence S00°37'20"E, 670 feet to the place of beginning.

All Public easements and dedications being vacated by virtue of K.S.A. 12-512(b).  
Savoy Company, P.A.

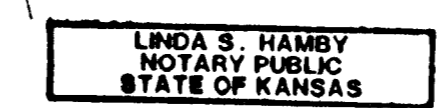
Date: 7-11-06  

 Surveyor  
 Mark A. Savoy RLS #788

Know all men by these presents that we, the undersigned, have caused the land described in the surveyors certificate to be platted into a Lot, a Block and Street to be known as "PARADISE ACRES" an Addition to Sedgwick County, Kansas. The Street is hereby dedicated to and for the use of the public. The Contingent Street Dedication is hereby contingently dedicated as street right-of-way to become effective upon the platting of any adjacent subdivision having a street connecting thereto. The costs of constructing said street, are to be borne by the person(s) or agency that owns said adjacent subdivision. The drainage and utility easement is hereby granted as indicated for the construction and maintenance of all public utilities and for drainage purposes. A drainage plan has been developed for this plat and all drainage easements and rights-of-way shall remain at established grades or modified with the approval of the Engineer of the appropriate governing body, and unobstructed to allow for the conveyance of stormwater. Access control is hereby granted to the appropriate governing body as indicated on the face of the plat.

Bernard J. Govert      Lorene F. Govert  
 Bernard J. Govert      Lorene F. Govert

State of Kansas) SS  
Sedgwick County)

The foregoing instrument acknowledged before me, this 10<sup>th</sup> day of July, 2006, by Bernard J. Govert and Lorene F. Govert, husband and wife.

My App't. Exp 12/30/07 Linda S. Hamby Notary Public  


Reviewed in accordance with K.S.A. 58-2005 on this \_\_\_\_\_ day of \_\_\_\_\_, 2006.

Tricia L. Robello, L.S. #1246  
 Deputy County Surveyor  
 Sedgwick County, Kansas

This plat of "PARADISE ACRES", an Addition to Sedgwick County, Kansas has been submitted to and approved by the Wichita-Sedgwick County Metropolitan Area Planning Commission, Wichita, Kansas.  
 Dated this \_\_\_\_\_ day of \_\_\_\_\_, 2006.

Wichita-Sedgwick County Metropolitan Area Planning Commission

\_\_\_\_\_  
 Chair  
 Harold L. Warner, Jr.

\_\_\_\_\_  
 Secretary  
 John L. Schlegel

This plat approved and all dedications shown hereon, are hereby accepted by the City Council of the City of Wichita, Kansas, dated this day \_\_\_\_\_ of \_\_\_\_\_, 2006.

\_\_\_\_\_  
 Mayor  
 Carlos Myers

\_\_\_\_\_  
 City Clerk  
 Karen Sublett

This plat approved and all dedications shown hereon, are hereby accepted by the Board of County Commissioners, Sedgwick County, Kansas, this \_\_\_\_\_ day of \_\_\_\_\_, 2006.

\_\_\_\_\_  
 Chairman  
 Ben Sciortino

\_\_\_\_\_  
 County Clerk  
 Don Brace

Entered on transfer record this \_\_\_\_\_ day of \_\_\_\_\_, 2006.

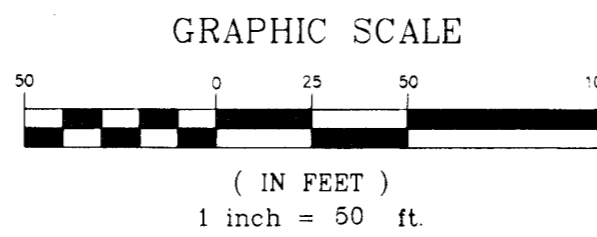
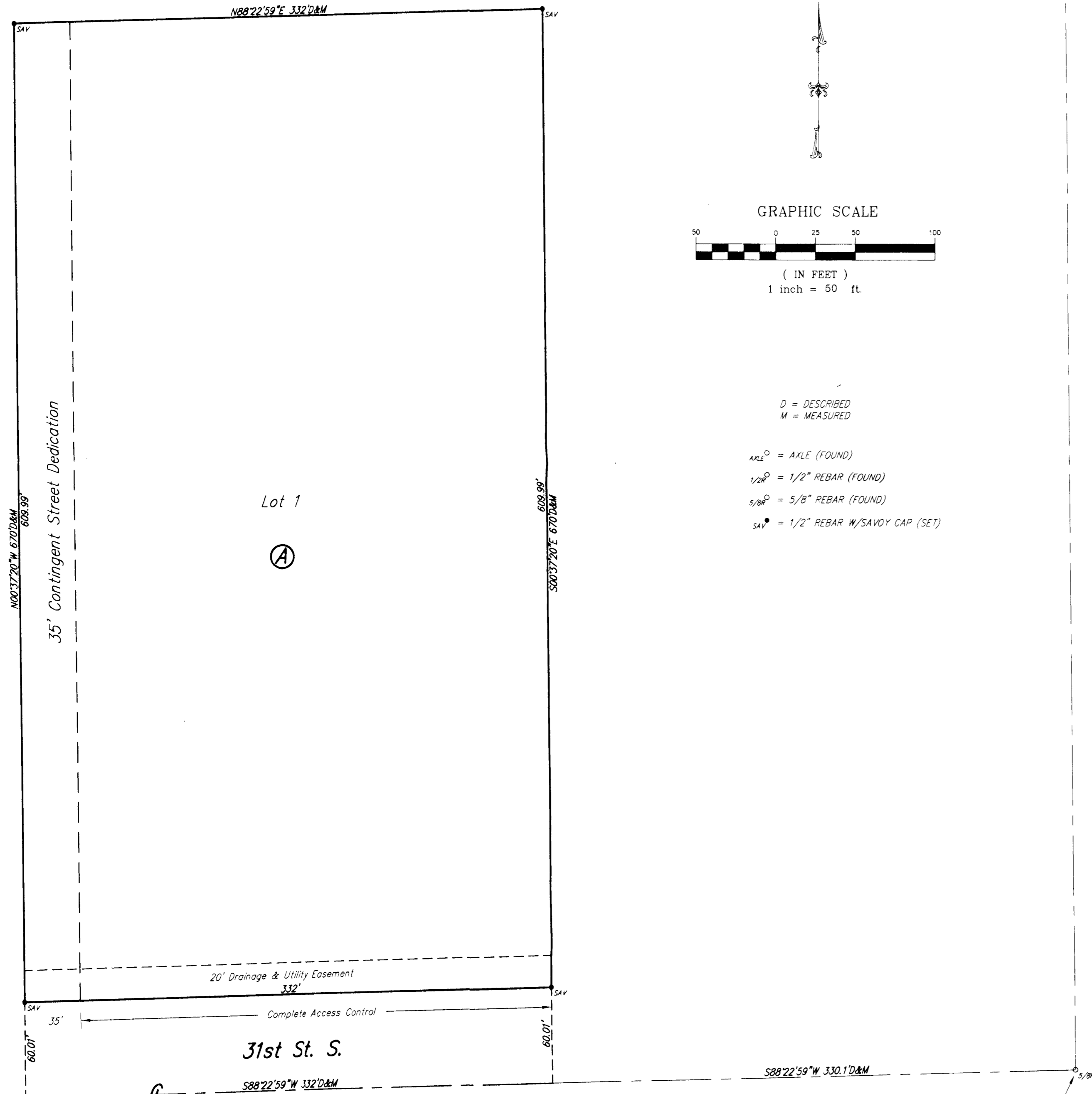
\_\_\_\_\_  
 County Clerk  
 Don Brace

State of Kansas) SS  
Sedgwick County)

This is to certify that this plat has been filed for record in the office of the Register of Deeds, this \_\_\_\_\_ day of \_\_\_\_\_, 2006, at \_\_\_\_\_ o'clock \_\_\_\_\_ M: and is duly recorded.

\_\_\_\_\_  
 Register of Deeds  
 Bill Meek

\_\_\_\_\_  
 Deputy  
 Tonya Buckingham



- D = DESCRIBED
- M = MEASURED
- AKLE<sup>P</sup> = AKLE (FOUND)
- 1/2"<sup>P</sup> = 1/2" REBAR (FOUND)
- 5/8"<sup>P</sup> = 5/8" REBAR (FOUND)
- SA<sup>P</sup> = 1/2" REBAR W/SAVOY CAP (SET)

