

PARADISE ACRES

an Addition to Sedgwick County, Kansas

State of Kansas) SS
Sedgwick County)

We, Savoy Company, P.A., Surveyors in aforesaid county and state do hereby certify that, under the supervision of the undersigned, we have surveyed and platted "PARADISE ACRES", an Addition to Sedgwick County, Kansas and that the accompanying plat is a true and correct exhibit of the property surveyed, described as follows:

That part of the SW1/4 of Sec. 3, Twp. 28-S, R-2-E of the 6th P.M., Sedgwick County, Kansas described as commencing at the S.E. Corner thereof; thence S88°22'59"W, along the south line of said SW1/4, 330.10 feet for a place of beginning; thence S88°22'59"W, 332 feet; thence N00°37'20"W, parallel with the east line of said SW1/4, 670 feet; thence N88°22'59"E, 332 feet; thence S00°37'20"E, 670 feet to the place of beginning.

All Public easements and dedications being vacated by virtue of K.S.A. 12-512(b).

Savoy Company, P.A.

Date: _____

Mark A. Savoy RLS #788 Surveyor

This plat of "PARADISE ACRES", an Addition to Sedgwick County, Kansas has been submitted to and approved by the Wichita-Sedgwick County Metropolitan Area Planning Commission, Wichita, Kansas.
Dated this _____ day of _____, 2006.

Wichita-Sedgwick County Metropolitan Area Planning Commission

Harold L. Warner, Jr. Chair

John L. Schlegel Secretary

This plat approved and all dedications shown hereon, are hereby accepted by the City Council of the City of Wichita, Kansas, dated this day _____ of _____, 2006.

Carlos Myers Mayor

Pat Graves City Clerk

This plat approved and all dedications shown hereon, are hereby accepted by the Board of County Commissioners, Sedgwick County, Kansas, this _____ day of _____, 2006.

Ben Sciortino Chairman

Don Brace County Clerk

Entered on transfer record this _____ day of _____, 2006.

Don Brace County Clerk

State of Kansas) SS
Sedgwick County)

The foregoing instrument acknowledged before me, this _____ day of _____, 2006, by Bernard J. Govert and Lorene F. Govert, husband and wife.

My App't. Exp _____ Notary Public

State of Kansas) SS
Sedgwick County)

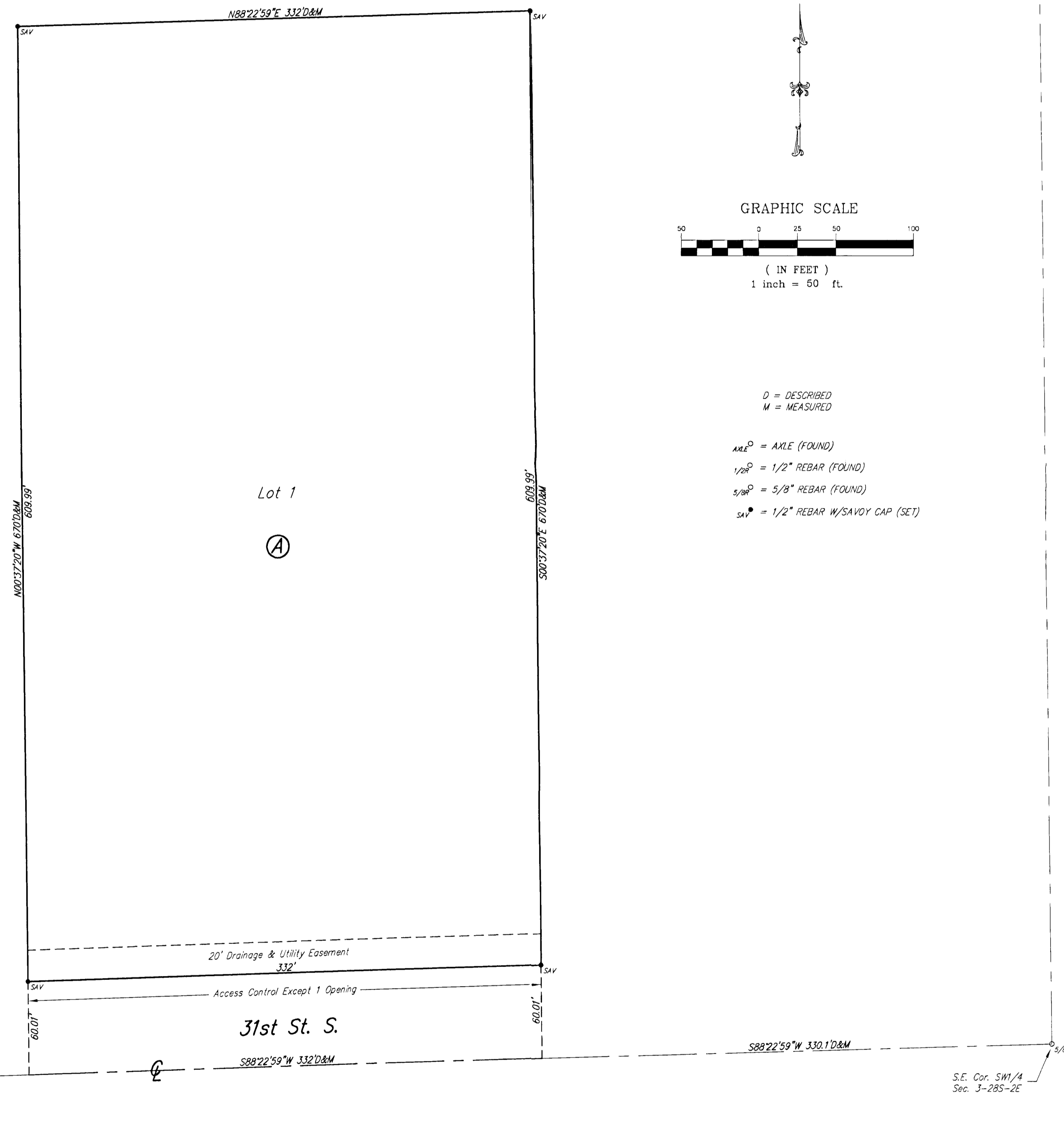
This is to certify that this plat has been filed for record in the office of the Register of Deeds, this _____ day of _____, 2006, at _____ o'clock _____ M: and is duly recorded.

Bill Meek Register of Deeds

Tonya Buckingham Deputy

Reviewed in accordance with K.S.A. 58-2005 on this _____ day of _____, 2006.

Tricia L. Robello, L.S. #1246 Deputy County Surveyor
Sedgwick County, Kansas



Savoy Company, P.A.
Land Surveyors

PH (316) 265-0005
FAX (316) 265-0275

PROJECT NO. 06A05905 P

535 S. Emporia, Suite 104, Wichita, KS 67202

www.savoyco.com