

PAULY-RAUSCH-RICHARDSON ACRES

FINAL TRACING REC'D Sedgwick County, Kansas

10-26-05

State of Kansas) SS
Sedgwick County)

We, Savoy Company, P.A., Surveyors in aforesaid county and state do hereby certify that, under the supervision of the undersigned, we have surveyed and platted "PAULY-RAUSCH-RICHARDSON ACRES", Sedgwick County, Kansas and that the accompanying plat is a true and correct exhibit of the property surveyed, described as follows:

That part of the SW1/4, of Sec. 21, Twp. 28-S, R-3-W of the 6th P.M., Sedgwick County, Kansas, described as commencing at the S.E. corner of said SW1/4; thence N01°00'14"W, along the east line of said SW1/4, 635 feet for a place of beginning; thence S88°40'08"W, parallel with the south line of said SW1/4, 295 feet; thence N01°00'14"W, parallel with the east line of said SW1/4, 295 feet; thence N88°40'08"E, 295 feet, to a point on the east line of said SW1/4; thence S01°00'14"E, along the east line of said SW1/4, 295 feet to the place of beginning

All Public easements and dedications being vacated by virtue of K.S.A. 12-512(b).

Savoy Company, P.A.

Date _____

Mark A. Savoy RLS #788 Surveyor

This plat of "PAULY-RAUSCH-RICHARDSON ACRES", Sedgwick County, Kansas, has been submitted to and approved by the Wichita-Sedgwick County Metropolitan Area Planning Commission, Wichita, Kansas. Dated this _____ day of _____, 2005.

Wichita-Sedgwick County Metropolitan Area Planning Commission

Morris K. Dunlap Chair

John L. Schlegel Secretary

State of Kansas) SS
Sedgwick County)

This plat approved and all dedications shown hereon, are hereby accepted by the Board of County Commissioners, Sedgwick County, Kansas, on this _____ day of _____, 2005.

Dave Unruh Chairman

Don Brace County Clerk

Know all men by these presents that we, the undersigned, have caused the land described in the surveyors certificate to be platted into a Lot and Block to be known as "PAULY-RAUSCH-RICHARDSON ACRES", Sedgwick County, Kansas. A drainage plan has been developed for this plat and all drainage easements, and rights-of-way shall remain at established grades or as modified with the approval of the County Engineer, and unobstructed to allow for the conveyance of stormwater.

Reviewed in accordance with K.S.A. 58-2005 on this _____ day of _____, 2005.

Tricia L. Robello, L.S. #1246 Deputy County Surveyor
Sedgwick County, Kansas

Jeff Richardson

Mary Richardson

Entered on transfer record this _____ day of _____, 2005.

Don Brace County Clerk

State of Kansas) SS
Sedgwick County)

This is to certify that this plat has been filed for record in the office of the Register of Deeds, this _____ day of _____, 2005, at _____ o'clock _____ M. and is duly recorded.

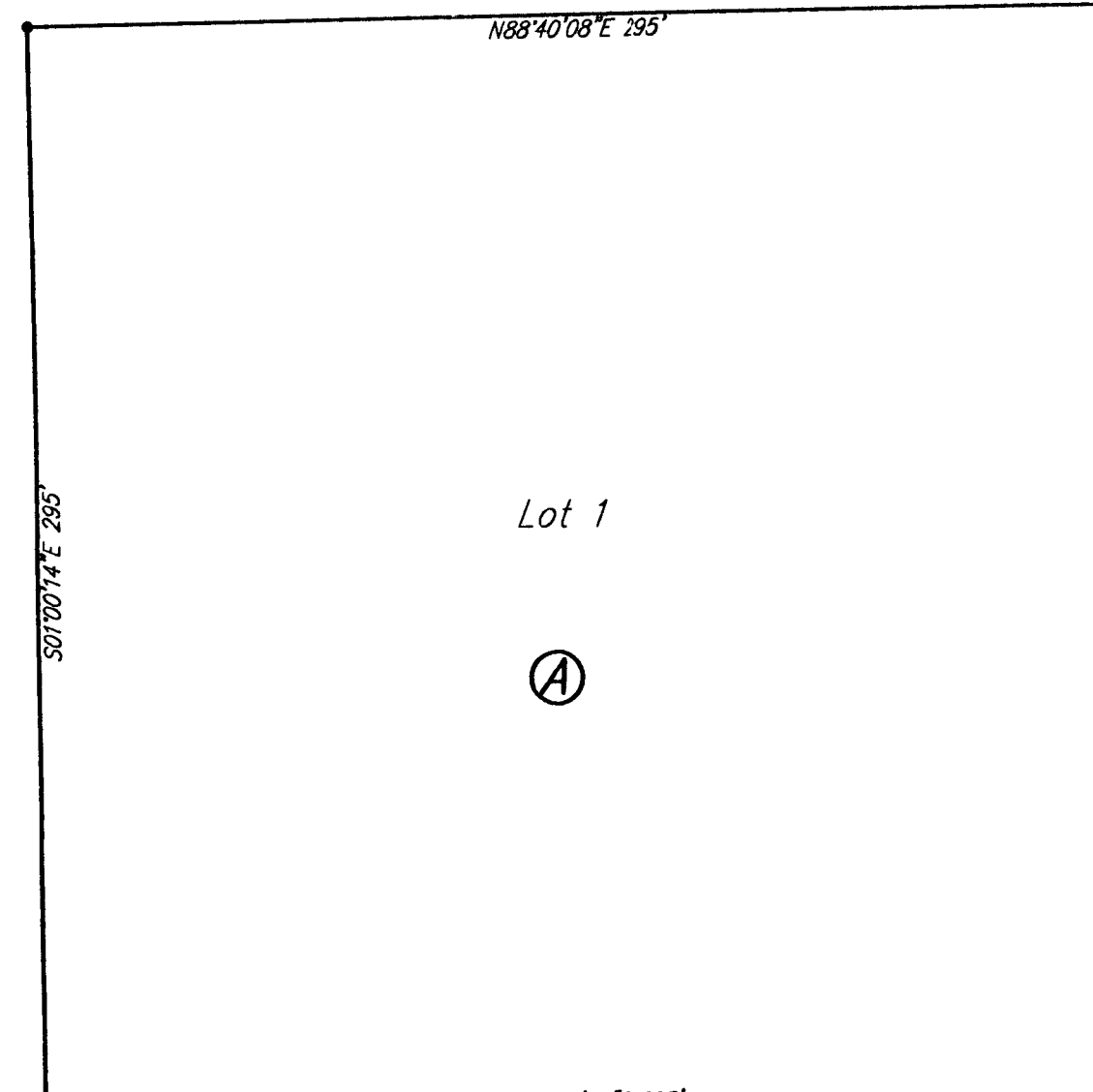
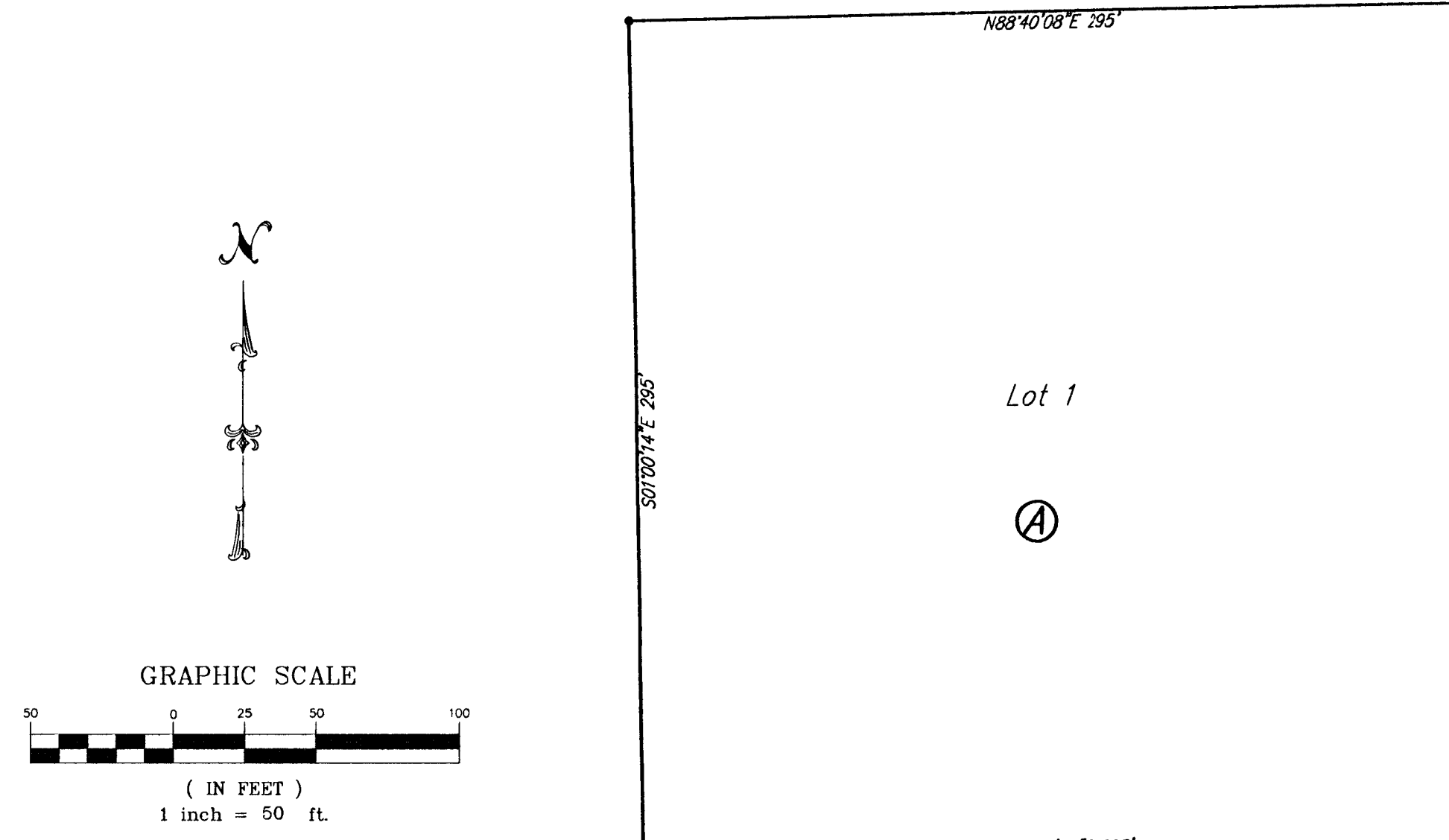
Bill Meek Register of Deeds

Tonya Buckingham Deputy

The foregoing instrument acknowledged before me, this _____ day of _____, 2005, by Jeff Richardson and Mary Richardson, husband and wife.

Notary Public

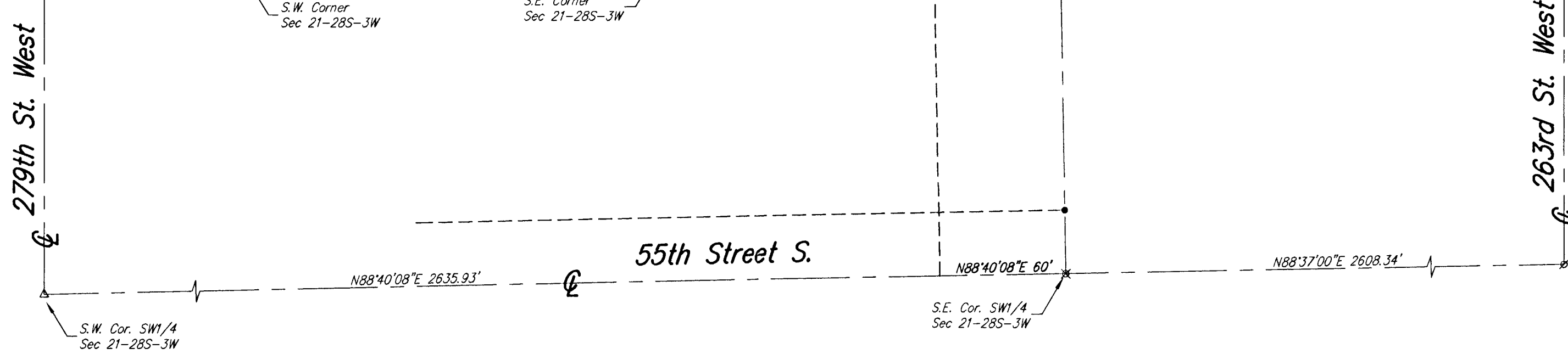
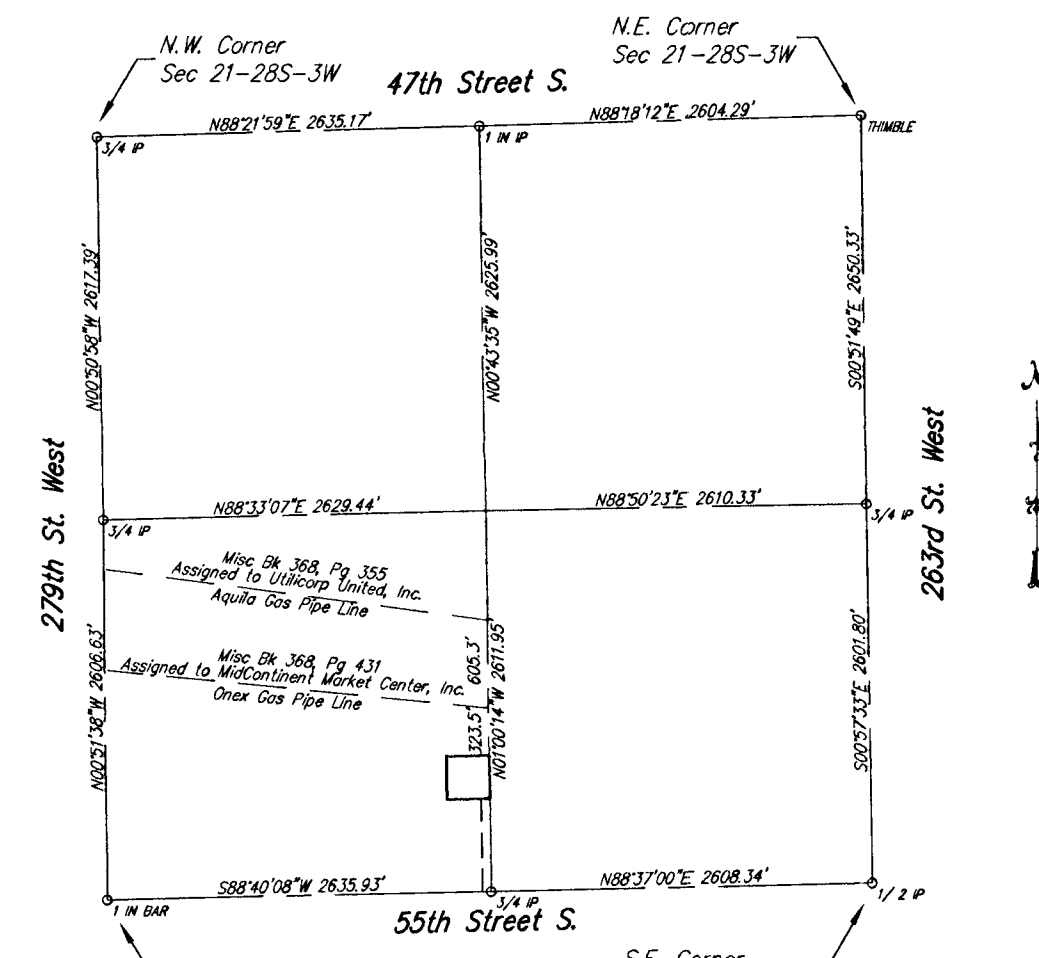
My App't. Exp. _____



- Δ = 1" STEEL BAR (FOUND)
- ✕ = 3/4" IRON PIPE (FOUND)
- ⊗ = 1/2" IRON PIPE (FOUND)
- = 1/2" REBAR W/SAVOY CAP (SET)

Note:
Easement for pipeline, Misc Bk 368, Pg 355 SW1/4 of Sec. 21-28S-3W of the 6th P.M. Assigned to Utilicorp United, Inc.
Easement for pipeline, Misc Bk 354, Pg 431 SW1/4 of Sec. 21-28S-3W of the 6th P.M. Assigned to MidContinent Market Center, Inc.

There are no pipelines or pipeline equipment crossing or situate on any portion of Lot 1, Block A, Pauly-Rausch-Richardson Acres, Sedgwick County, Kansas or the 60 foot wide Ingress & Egress Easement recorded on Doc#FLMOPC: 28841818



Savoy Company, P.A.
Land Surveyors
PH (316) 265-0005
FAX (316) 265-0275
www.savoyco.com

PROJECT NO. 05A04275 P

535 S. Emporia, Suite 104, Wichita, KS 67202