

PAULY-RAUSCH-RICHARDSON ACRES

Sedgwick County, Kansas

State of Kansas) SS
Sedgwick County)

We, Savoy Company, P.A., Surveyors in aforesaid county and state do hereby certify that, under the supervision of the undersigned, we have surveyed and platted "PAULY-RAUSCH-RICHARDSON ACRES", Sedgwick County, Kansas and that the accompanying plat is a true and correct exhibit of the property surveyed, described as follows:

That part of the SW1/4, of Sec. 21, Twp. 28-S, R-3-W of the 6th P.M., Sedgwick County, Kansas, described as commencing at the S.E. corner of said SW1/4; thence N01°00'14"W, along the east line of said SW1/4, 635 feet for a place of beginning; thence S88°40'08"W, parallel with the south line of said SW1/4, 295 feet; thence N01°00'14"W, parallel with the east line of said SW1/4, 295 feet; thence N88°40'08"E, 295 feet, to a point on the east line of said SW1/4; thence S01°00'14"E, along the east line of said SW1/4, 295 feet to the place of beginning, together with an Easement for Ingress and Egress, described as beginning at the SE corner of said SW1/4; thence N01°00'14"W along the east line of said SW1/4, 635 feet; thence S88°40'08"W, parallel with the south line of said SW1/4, 60 feet; thence S01°00'14"E, 635 feet to a point on the south line of said SW1/4; thence N88°40'08"E, along the south line of said SW1/4, 60 feet to the place of beginning.

All Public easements and dedications being vacated by virtue of K.S.A. 12-512(b).

Savoy Company, P.A.

Date _____

Mark A. Savoy RLS #788 Surveyor

This plat of "PAULY-RAUSCH-RICHARDSON ACRES", Sedgwick County, Kansas, has been submitted to and approved by the Wichita-Sedgwick County Metropolitan Area Planning Commission, Wichita, Kansas. Dated this _____ day of _____, 2005.

Wichita-Sedgwick County Metropolitan Area Planning Commission

Morris K. Dunlap Acting Chairman

John L. Schlegel Secretary

State of Kansas) SS
Sedgwick County)

This plat approved and all dedications shown hereon, are hereby accepted by the Board of County Commissioners, Sedgwick County, Kansas, on this _____ day of _____, 2005.

Dave Unruh Chairman

Don Brace County Clerk

Reviewed in accordance with K.S.A. 58-2005 on this _____ day of _____, 2005.

Tricia L. Robello, L.S. #1246 Deputy County Surveyor
Sedgwick County, Kansas

Entered on transfer record this _____ day of _____, 2005.

Don Brace County Clerk

State of Kansas) SS
Sedgwick County)

This is to certify that this plat has been filed for record in the office of the Register of Deeds, this _____ day of _____, 2005, at _____ o'clock _____ M. and is duly recorded.

Bill Meek Register of Deeds

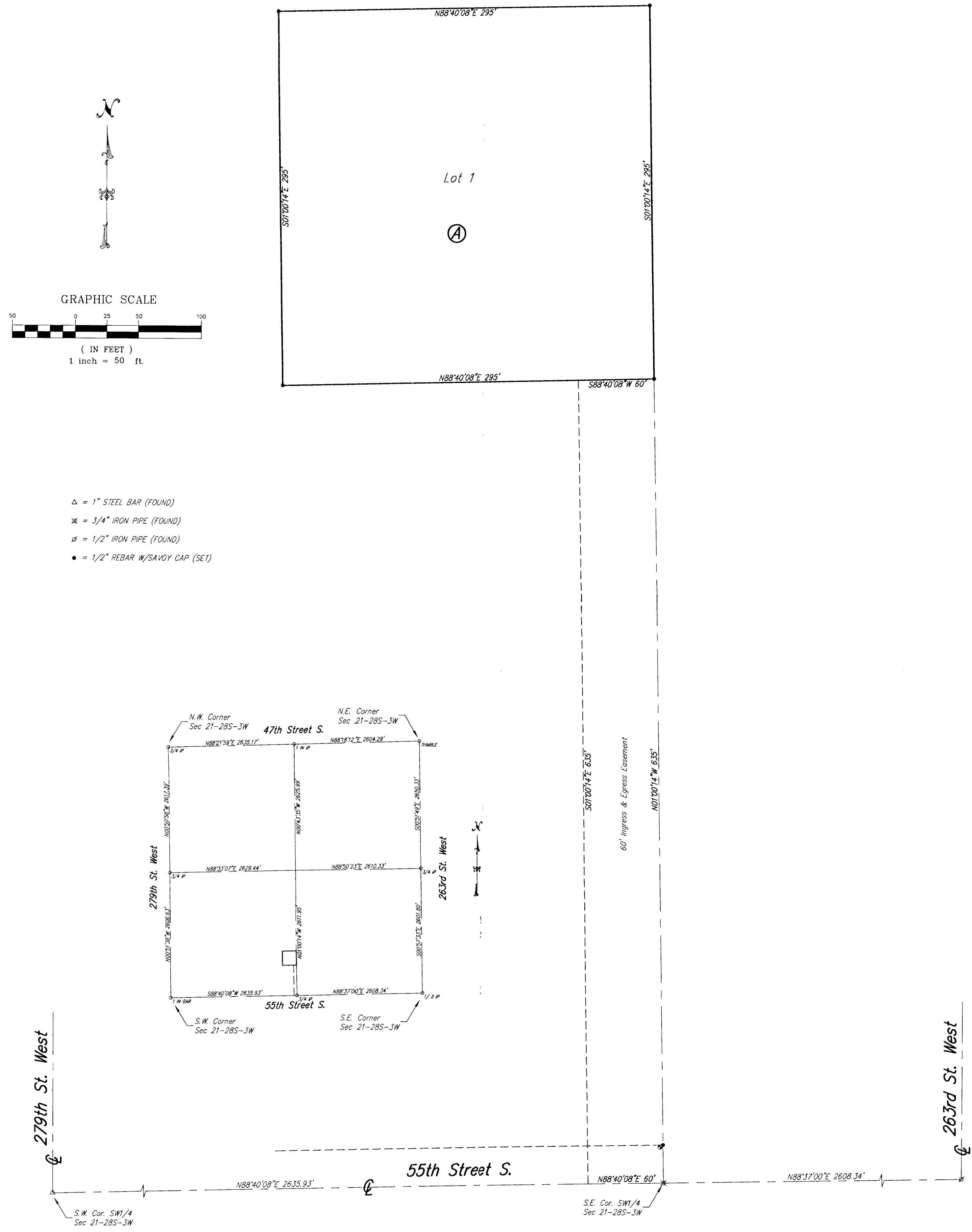
Linda Kizzire Deputy

State of Kansas) SS
Sedgwick County)

The foregoing instrument acknowledged before me, this _____ day of _____, 2005, by Jeff Richardson and Mary Richardson, husband and wife.

Notary Public

My App't. Exp. _____



Savoy Company, P.A.
Land Surveyors

PH (316) 265-0005
FAX (316) 265-0275

535 S. Emporia, Suite 104, Wichita, KS 67202
www.savoyco.com