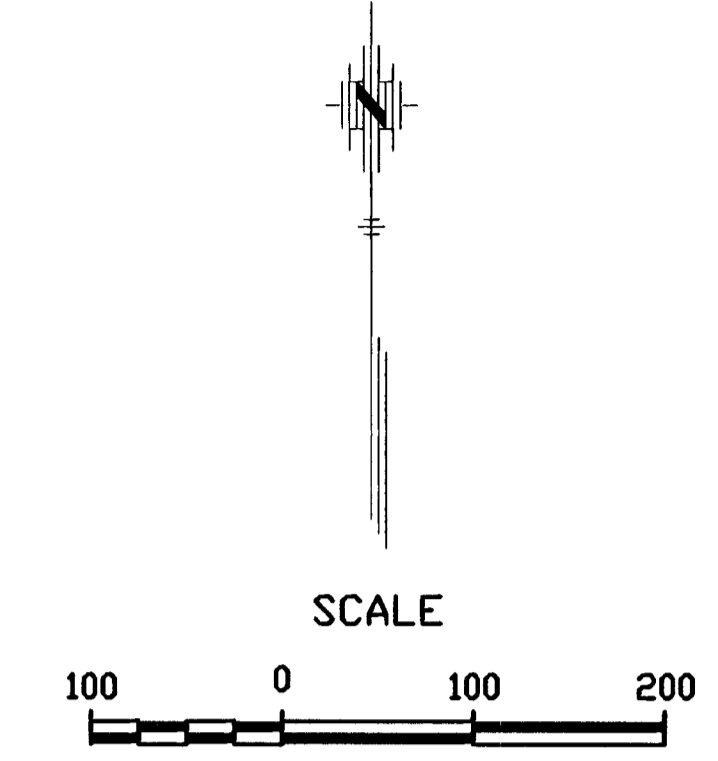
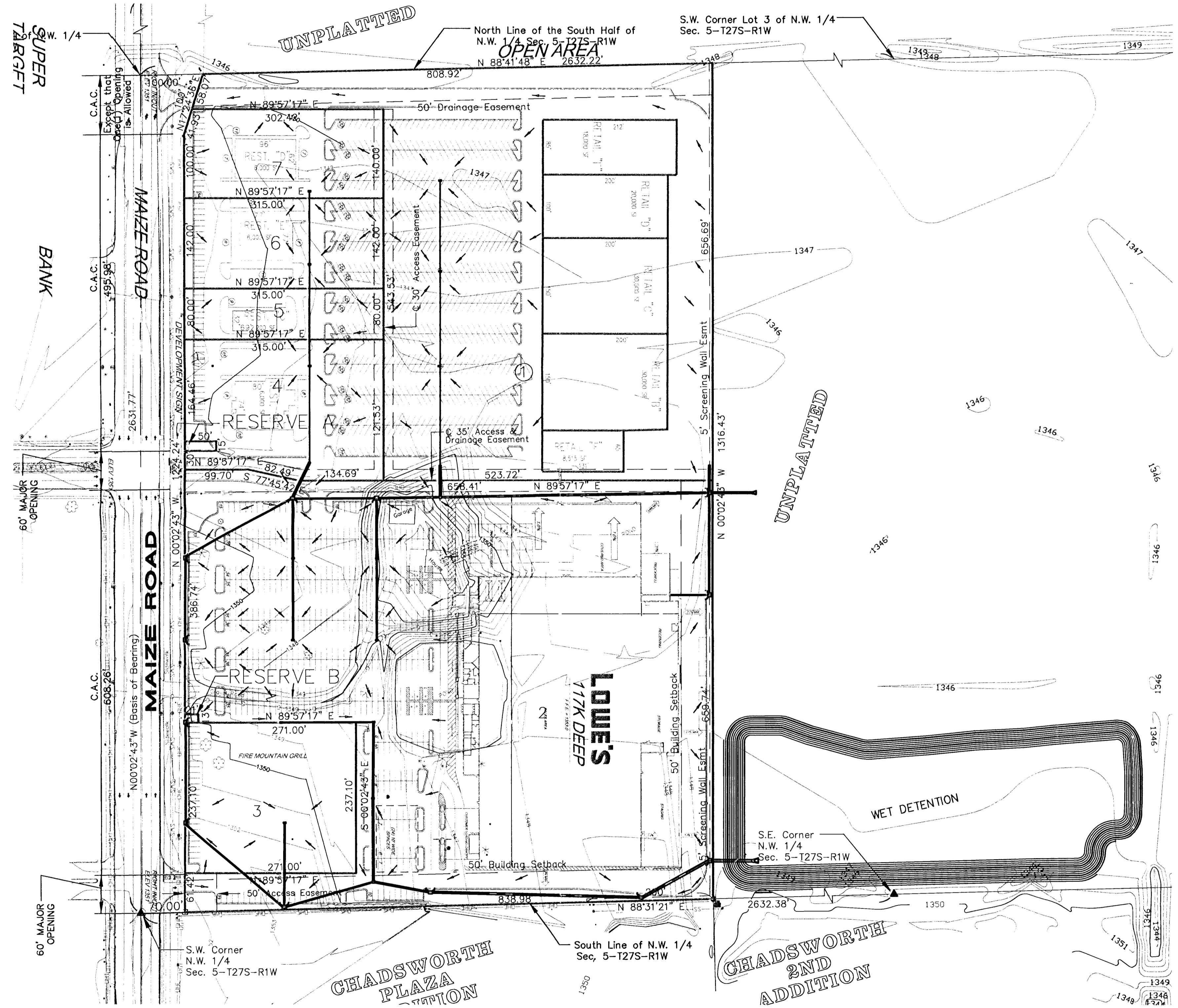


DRAINAGE PLAN OF PEARSON COMMERCIAL ADDITION WICHITA, SEDGWICK COUNTY, KANSAS

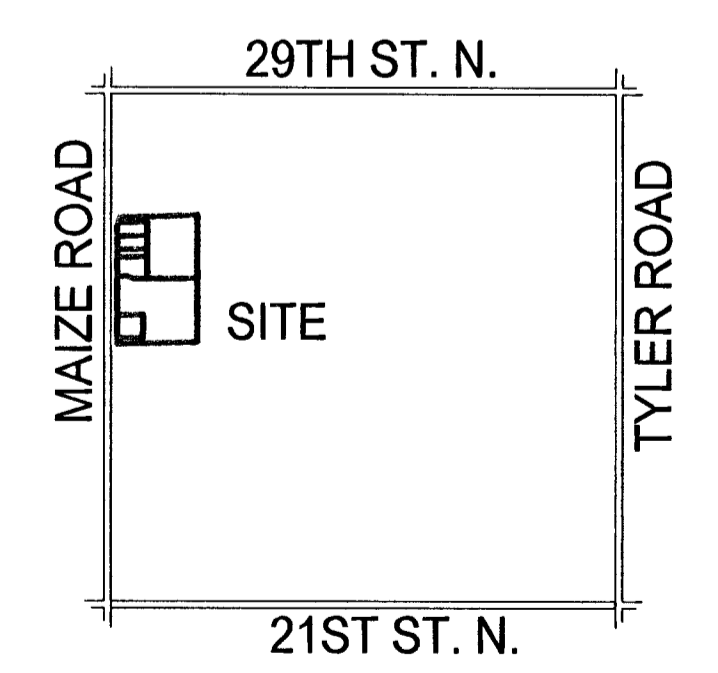
NOTES:

1. Detention for this property shall be provided by the property owner on the adjacent unplatted tract to the east as illustrated.
2. For base flood elevations and detention storage volumes, refer to Cadillac Basin Drainage Report prepared by Professional Engineering Consultants dated _____.

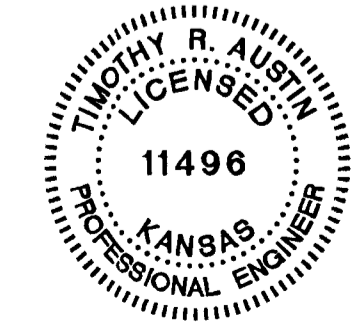


LEGEND

- = 1/2" Iron Pipe (found)
- = 1/2" Rebar (found)
- = PK Nail (found)
- + = "+ Cut (found)
- ▲ = Section Corner
- (M) = Measured
- (P) = Platted
- R.O.W. = Right-of-Way
- = Electric Riser



LOCATION MAP
No Scale



POE & ASSOCIATES, INC.
CONSULTING ENGINEERS
5940 E. Central, Suite 200 ■ Wichita, KS 67208-4242
Phone 316/685-4114 ■ FAX 316/685-4444