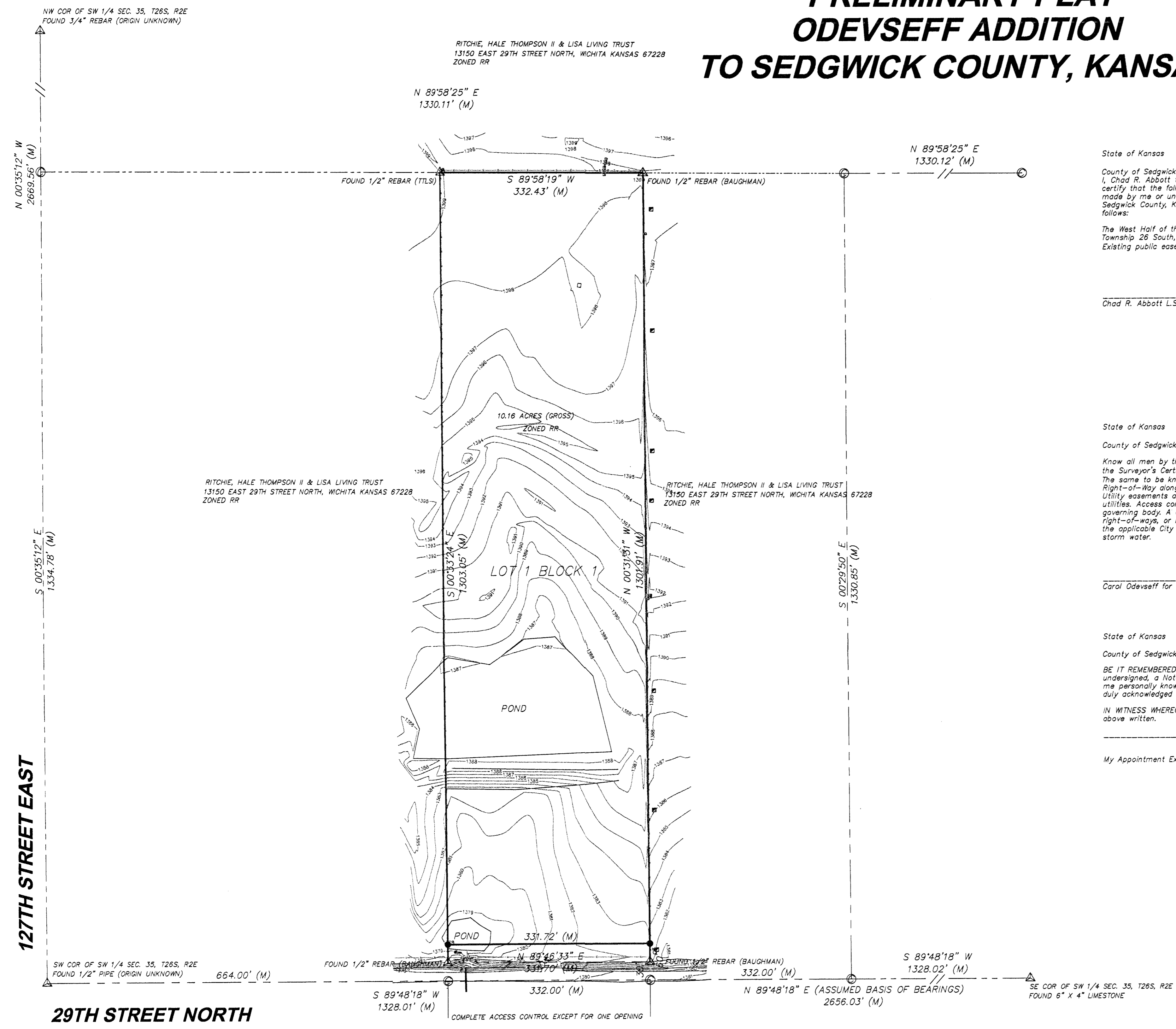


PRELIMINARY PLAT ODEVSEFF ADDITION TO SEDGWICK COUNTY, KANSAS



CERTIFICATE OF SURVEY

State of Kansas }
County of Sedgwick } SS

I, Chad R. Abbott the undersigned registered land surveyor of the State of Kansas, do hereby certify that the following described tract of land was surveyed on May 18, 2010. The survey was made by me or under my direct supervision and the accompanying plat Odevseff Addition to Sedgwick County, Kansas, is a true and correct exhibit of the property surveyed, described as follows:

The West Half of the East Half of the Southwest Quarter of the Southwest Quarter of Section 35, Township 26 South, Range 2 East of the 6th P.M., Sedgwick County, Kansas.
Existing public easements and dedications being vacated by virtue of K.S.A. 12-512(b).

Chad R. Abbott L.S. #1340

OWNER'S CERTIFICATE

State of Kansas }
County of Sedgwick } SS

Know all men by these presents that we the undersigned owner of the land as above set forth in the Surveyor's Certificate, have caused the same to be surveyed and platted into a lot and a block. The same to be known as Odevseff Addition to Sedgwick County, Kansas. The 60' Street Right-of-Way along 29th Street North is hereby dedicated to and for the use of the public. Utility easements are hereby granted as indicated for the construction and maintenance of all public utilities. Access control as shown on the face of the plat is hereby granted to the appropriate governing body. A drainage plan has been developed for the plat and all drainage easements, right-of-ways, or reserves shall remain at established grades or as modified with the approval of the applicable City or County Engineer, and will remain unobstructed to allow for the conveyance of storm water.

Carol Odevseff for Carol Odevseff Trust

NOTARY CERTIFICATE

State of Kansas }
County of Sedgwick } SS

BE IT REMEMBERED, that on this _____ Day of _____, 2010, before me the undersigned, a Notary Public, in and for the County and State aforesaid, came Carol Odevseff, to me personally known to be the same person who executed the foregoing instrument of writing and duly acknowledged the execution of the same.

IN WITNESS WHEREOF, I have hereunto set my hand and affixed my official seal, the day and year above written.

_____, Notary Public

My Appointment Expires: _____

PLANNING AGENCY CERTIFICATE

State of Kansas }
County of Sedgwick } SS

This plat of Odevseff Addition to Sedgwick County, Kansas, has been submitted to and approved by the Wichita-Sedgwick County Metropolitan Area Planning Commission, Wichita, Kansas.

Dated this _____ Day of _____, 2010.

WICHITA-SEDGWICK COUNTY METROPOLITAN PLANNING COMMISSION

G. Nelson Van Fleet, Chairman
John L. Schlegel, Secretary

COUNTY SURVEYOR CERTIFICATE

Reviewed in accordance with K.S.A. 58-2005 on this _____ Day of _____, 2010.

Tricia L. Robello #1246
Deputy County Surveyor
Sedgwick County, Kansas

State of Kansas }
County of Sedgwick } SS

This plat of Odevseff Addition to Sedgwick County, Kansas, has been submitted to and approved by the Board of County Commissioners of Sedgwick County, Kansas, on this _____ day of _____, 2010.

Karl Peterjohn, Chairman, ATTEST: Kelly B. Arnold, County Clerk

Entered on transfer record this _____ Day of _____, 2010.

Kelly B. Arnold, County Clerk

REGISTER OF DEEDS CERTIFICATE

State of Kansas }
County of Sedgwick } SS

This is to certify that this plat has been filed for record in the office of the Register of Deeds, this day of _____ at _____ o'clock _____ M; and is duly recorded.

Bill Meek, Register of Deeds
Tonya Buckingham, Deputy

This plat approved and all dedications shown hereon accepted by the City Council of the City of Wichita, Kansas, this _____ day of _____, 2010.

Carl Brewer, Mayor Karen Sublett, City Clerk

Entered on transfer record this _____ day of _____, 2010

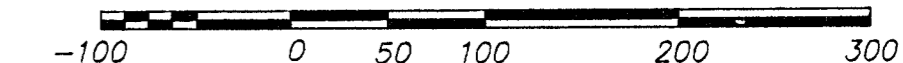
Kelly B. Arnold, County Clerk

DATE OF TOPOGRAPHICAL SURVEY: May 18, 2010

LEGEND:

- (M) = MEASURED OR CALCULATED FROM MEASUREMENT
- (P) = PLATTED
- = SET 1/2" REBAR WITH CLS #168 CAP
- ▲ = FOUND MONUMENT (AS NOTED)
- = CALCULATED POINT
- ⊕ = POWER POLE

SCALE: 1" = 100'



Notes:
1. Elevation Datum = NAVD 88

JOB DESCRIPTION: PLAT	
PREPARED FOR: Carol Odevseff 612 South Erie Wichita Kansas	
JOB LOCATION: 29th N. & 127th St. E.	DATE OF PREPARATION: 08-2010
JOB NUMBER: A12037	SHEET 1 OF 1

Benchmark
LAND SURVEY, P.A.

416 South Market WICHITA, KS 67202
PH: 316.262.2240 FAX: 316.262.2268
surveyors@benchmarkks.net

DRAWN BY: C.A. CHECKED BY: C.A.