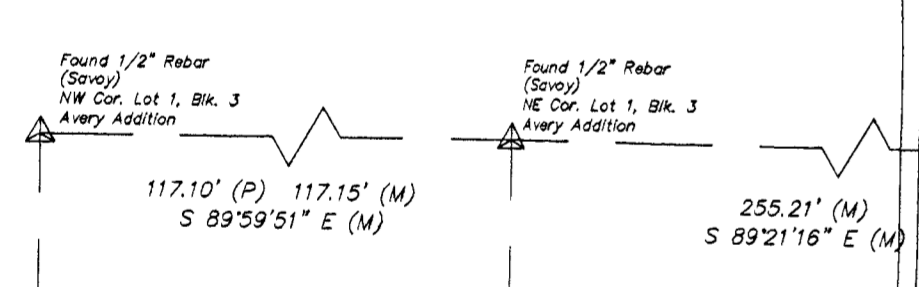
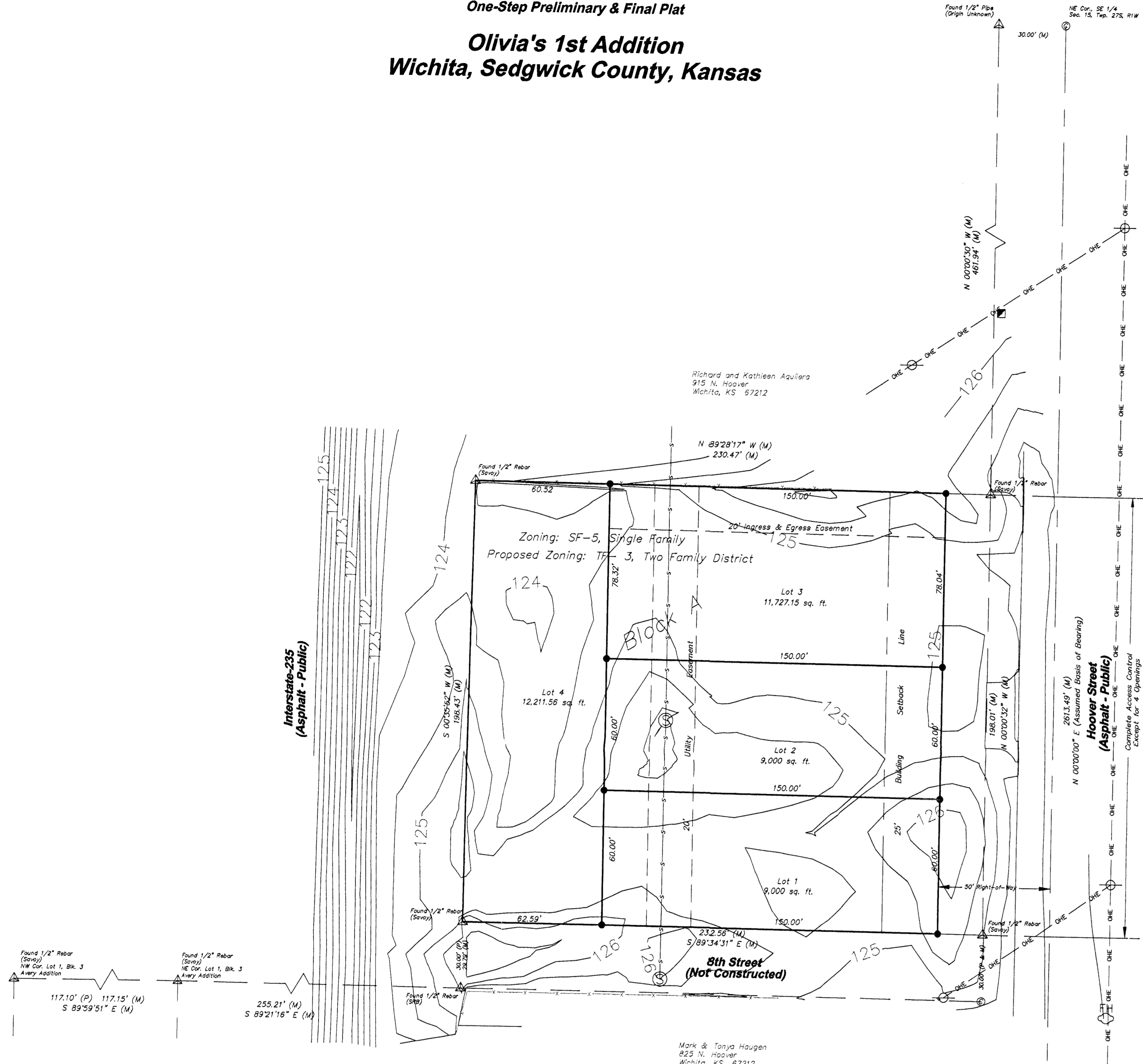


**One-Step Preliminary & Final Plat**  
**Olivia's 1st Addition**  
**Wichita, Sedgwick County, Kansas**



**SURVEYOR'S CERTIFICATE**

State of Kansas )  
 County of Sedgwick ) SS

We, Benchmark Land Survey, P.A., in aforesaid State and County, do hereby certify that we have surveyed and platted "Olivia's 1st Addition", Wichita, Sedgwick County, Kansas and that the accompanying plat is a true and correct exhibit of the property surveyed described as:

All that part of the following described tract lying East of Interstate I-235, as condemned in Case #A-77197; Beginning 28 rods South of the Northeast corner of the Southeast Quarter of Section 15, Township 27 South, Range 1 West of the 6th P.M., Sedgwick County, Kansas; thence South 12 rods; thence West parallel with the North line of said Section 53 1/3 rods; thence North 12 rods; thence East to the place of beginning.

Existing public easements and dedications being vacated by virtue of K.S.A. 12-512(b).

Chad R. Abbot L.S. #1340  
 Benchmark Land Survey, P.A.

**OWNER'S CERTIFICATE**

State of Kansas )  
 County of Sedgwick ) SS

Know all men by these presents that we the undersigned owners of the land as above set forth in the Surveyor's Certificate, have caused the same to be surveyed and platted into lots and a block. The same to be known as "Olivia's 1st Addition", Wichita, Sedgwick County, Kansas. The 50' Street Right-of-Way along Hoover Street is hereby dedicated to and for the use of the public. Access drainage control as shown on the face of the plat is hereby granted to the appropriate governing body. A drainage plan has been developed for the plat and all drainage easements, rights-of-ways, or reserves shall remain at established grades or as modified with the approval of the applicable City or County Engineer, and unobstructed to allow for the conveyance of stormwater.

Jeffrey S. Niedens Penny S. Niedens

**NOTARY PUBLIC**

State of Kansas )  
 County of Sedgwick ) SS

BE IT REMEMBERED, that on this \_\_\_\_\_ day of \_\_\_\_\_, 2006, before me the undersigned, a Notary Public in and for the County and State aforesaid, came Jeffrey S. Niedens and Penny S. Niedens, to me personally known to be the same persons who executed the foregoing instrument of writing and duly acknowledged the execution of the same.

IN WITNESS WHEREOF, I have hereunto set my hand and affixed my official seal, the day and year above written.

Angie Best Notary Public  
 My Appointment Expires: October 29, 2008

**PLANNING COMMISSION CERTIFICATE**

State of Kansas )  
 City of Wichita ) SS

This plat of "Olivia's 1st Addition", Wichita, Sedgwick County, Kansas has been submitted to and approved by the Wichita-Sedgwick County Metropolitan Area Planning Commission, Wichita, Kansas.

Dated this \_\_\_\_\_ day of \_\_\_\_\_, 2006.  
 Wichita-Sedgwick County Metropolitan Area Planning Commission, Wichita, Kansas.

Harold L. Warner, Jr. Chairman  
 John L. Schlegel Secretary

**GOVERNING BODY CERTIFICATE**

This plat approved and all dedications shown hereon, if any, accepted by the City Council of the City of Wichita, Kansas, this \_\_\_\_\_ day of \_\_\_\_\_, 2006.

Carlos Mayans Mayor  
 Karen Scholfield City Clerk

**DEPUTY COUNTY SURVEYOR CERTIFICATE**

Reviewed in accordance with K.S.A. 58-2005 on this \_\_\_\_\_ day of \_\_\_\_\_, 2006.

Tricia L. Robello, L.S. #1246  
 Deputy County Surveyor  
 Sedgwick County, Kansas

**TRANSFER RECORD**

Entered on transfer record this \_\_\_\_\_ day of \_\_\_\_\_, 2006.

Don Brace County Clerk

**REGISTER OF DEEDS CERTIFICATE**

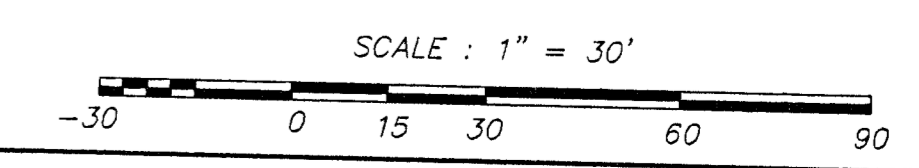
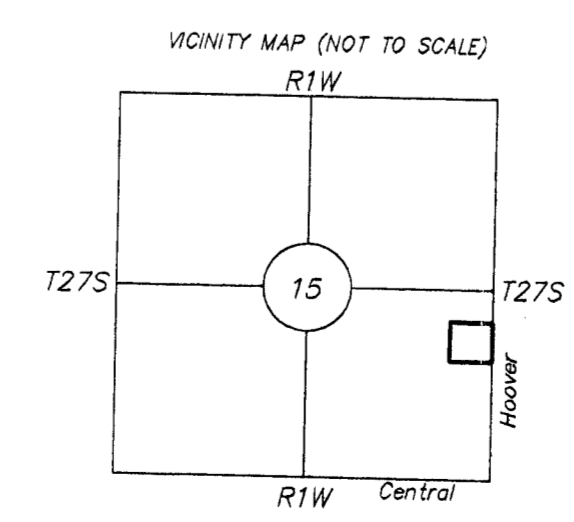
State of Kansas )  
 County of Sedgwick ) SS

This is to certify that this instrument has been filed for record in the office of the Register of Deeds, this \_\_\_\_\_ day of \_\_\_\_\_, 2006 at \_\_\_\_\_ o'clock \_\_\_\_\_ M; and is duly recorded.

Bill Meek Register of Deeds  
 Tonya Buckingham Deputy

**LEGEND:**

- (M) = MEASURED OR CALCULATED FROM MEASUREMENT
- (C) = CALCULATED POINT
- ▲ = FOUND 1/2" REBAR (UNLESS OTHERWISE NOTED)
- = SET 1/2" REBAR WITH CLS #168 CAP
- = POWER POLE
- = OVERHEAD ELECTRIC LINE
- = TELEPHONE RISER
- S— = FENCE
- X— = FIRE HYDRANT
- S— = SEWER LINE
- ⊗ = SANITARY SEWER MANHOLE



<b>JOB DESCRIPTION:</b> One-Step Preliminary & Final Plat	
<b>PREPARED FOR:</b> Jeff Niedens 5211 W. 81st North Valley Center, KS 67147	
<b>JOB LOCATION:</b> NW Cor. Hoover & 8th St. No.	<b>DATE OF PREPARATION:</b> March 24, 2006
<b>JOB NUMBER:</b> 6731	<b>SHEET 1 OF 1</b>



Benchmark:  
 Hoover and Central - COW Benchmark, NE corner of intersection, 34' east and 42' north of centerline both. 54.4' northeast of Section Corner Iron. 10.2' northeast of center power pole. Elev = 123.289

Found Monument  
 4" Rebar or stamped "M"  
 SE Cor. SE 1/4  
 Sec. 15, Twp. 27S, R1W