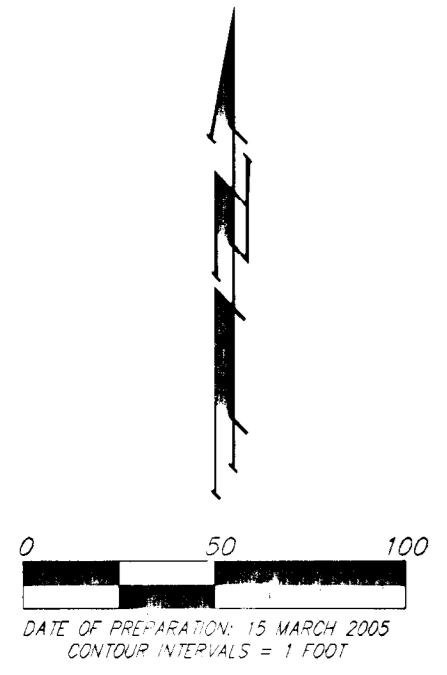


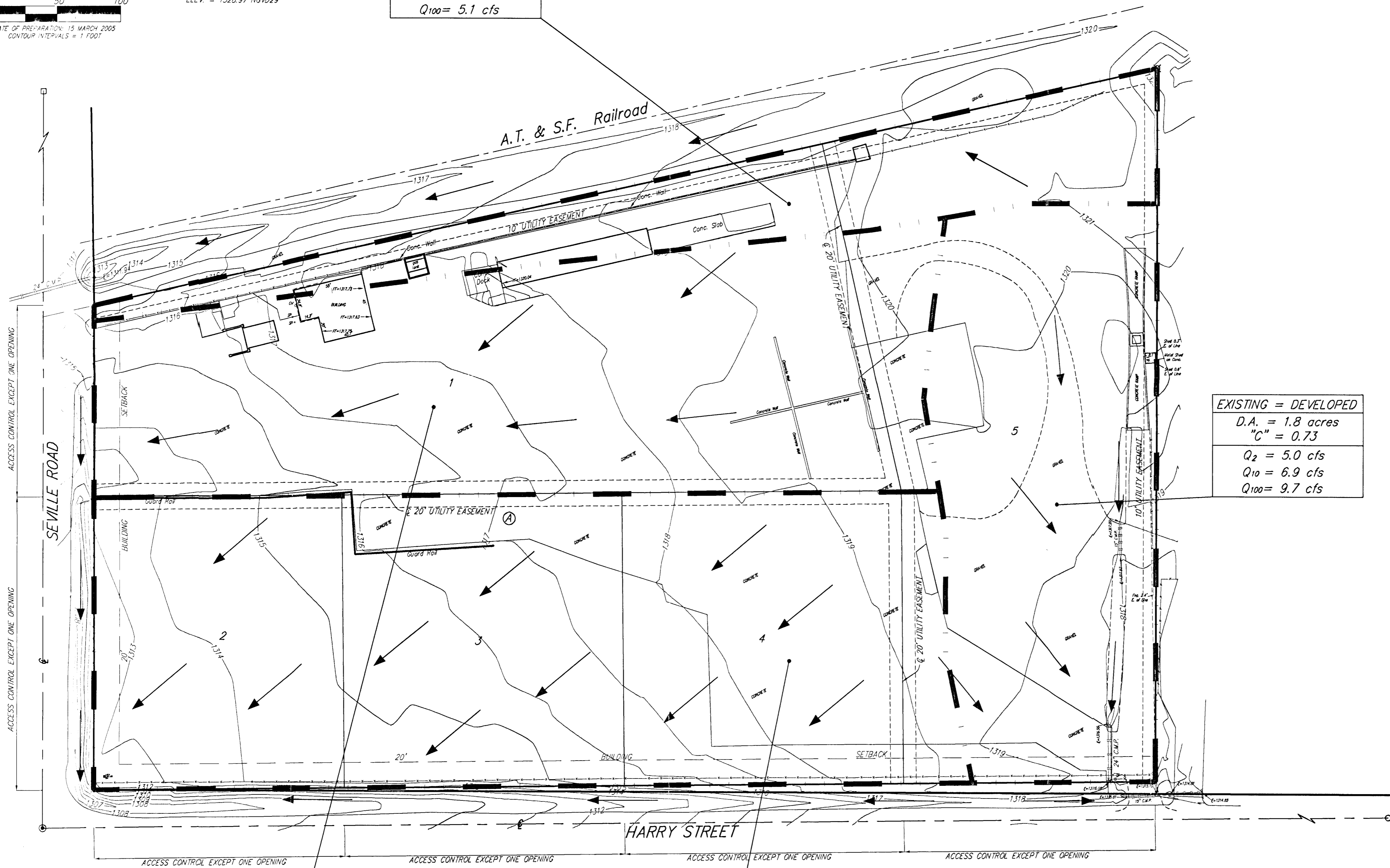
DRAINAGE PLAN
OSBECK ADDITION
WICHITA, SEDGWICK COUNTY, KANSAS



OWNER:
 OSBECK, LLC
 1501 E. FIRST STREET
 WICHITA, KS 67214

BENCHMARK:
 CITY OF WICHITA BENCHMARK
 44' WEST AND 39' SOUTH OF THE
 INTERSECTION OF TYLER & HARRY,
 ELEV. = 1328.97 NGVD29

EXISTING = DEVELOPED	
D.A.	= 1.0 acres
"C"	= 0.70
Q ₂	= 2.7 cfs
Q ₁₀	= 3.7 cfs
Q ₁₀₀	= 5.1 cfs



EXISTING = DEVELOPED	
D.A.	= 1.8 acres
"C"	= 0.73
Q ₂	= 5.0 cfs
Q ₁₀	= 6.9 cfs
Q ₁₀₀	= 9.7 cfs

EXISTING = DEVELOPED	
D.A.	= 2.7 acres
"C"	= 0.80
Q ₂	= 8.3 cfs
Q ₁₀	= 11 cfs
Q ₁₀₀	= 16 cfs

EXISTING CONDITIONS	DEVELOPED CONDITIONS
D.A. = 3.5 acres	D.A. = 3.5 acres
"C" = 0.65	"C" = 0.84
Q ₂ = 8.7 cfs	Q ₂ = 11 cfs
Q ₁₀ = 12 cfs	Q ₁₀ = 15 cfs
Q ₁₀₀ = 17 cfs	Q ₁₀₀ = 22 cfs

15 MARCH 2005